

MARKETS and FINANCE

Stocks WALL STREET

Table with columns for Stock Name, Price, and Change. Includes sections for NEW YORK STOCKS, WALL STREET, and LOCAL SECURITIES.

Table with columns for Stock Name, Price, and Change. Includes sections for Stocks and MUTUAL FUNDS.

Table with columns for Grain Name, Price, and Change. Includes sections for Grains and TODAY'S POTATO MARKET.

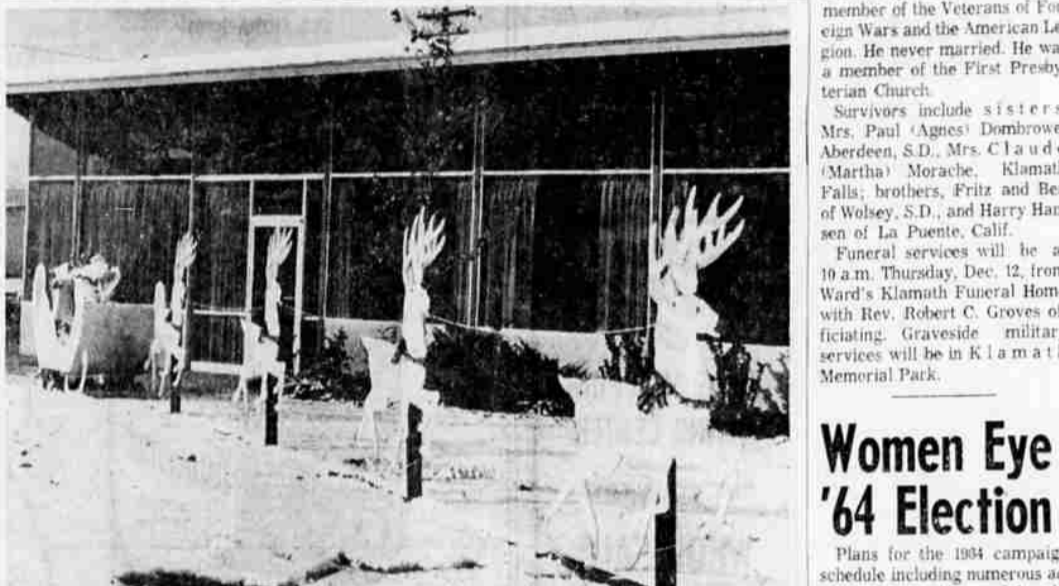
Table with columns for Demand, Market, and Prices per cwt. Includes sections for TODAY'S POTATO MARKET and KLAMATH BASIN CARLOT SHIPMENTS.

GIFTS OF THE MAGI



Chamber To Hear Speaker On Industrial Development

The economic and industrial development manager for Pacific Northwest Bell Telephone Company, Don Lewis, will be the featured speaker at the luncheon meeting of the Klamath County Chamber of Commerce...



SANTA AND REINDEERS — The recent snowfall provided the finishing touch for this animated display of Santa and his reindeers at Kingfall's Restaurant, 2765 Pershing Way.

Funerals

Funeral services for Barry Deane Picken took place at the graveside in Klamath Memorial Park on Tuesday, Dec. 9, at 2 p.m.

Obituaries

Carlos Leyva, 35, died here Dec. 10, 1963. Survivors: Wife, Nora; this city son, Carlos Jr.; Alfred, Lawrence, and Juanita, all of this city; brother, Leonard of Salem; daughters, Yvonne, Walter, Vera, Carolina and Roberta; and sister, Francisca.

Community Calendar

- TUESDAY: WOTM, Friendship members, 7:30 p.m.; Christmas party, gift exchange, Moose Home. CITY FACULTY WIVES, 8 p.m., meeting, Elks party room.

Crash Causes Minor Damage

A rear-end collision near Crater Lake Junction on Highway 97 resulted in no injuries to the motorists and minor damage to their automobiles, about 1:15 p.m., Monday.

BY O. HENRY Court Feels Cash Consideration To Be Small At End Of 3 Years

It is when these figures have been equalized that the metropolitan district will owe the county district \$31,907. It was the goal of the county court to bring the difference between the liabilities as low as possible.



J. Hansen Succumbs

Julius Odin Hansen, 54, died Dec. 9 in Hillsdale Hospital. Death apparently followed a heart attack. He was a native of Minden, Neb., born July 30, 1909.

Death Takes Ida Grimes

Mrs. Ida Grigsby Grimes, 78, a resident of Klamath County during most of her lifetime, and member of a pioneer family, died at her home, 1937 Portland Street, Dec. 9. She had been ill since June.

Women Eye '64 Election

Plans for the 1964 campaign schedule including numerous activities, were discussed by the executive board of Klamath County Republican Women at a recent meeting.

County Agent Hurt In Crash

LAKEVIEW—Barbara Glott, extension agent for Lake County, was injured Friday evening in a two-car collision about 11 miles south of Salem.

Father Dies In Kansas

James A. Allen, member of the advertising staff of the Herald and News, was called to Burlington, Kan., Dec. 10, by the death of his father Lafayette Hoffman Allen, 66. The elder, a retired farmer, had also served four terms as sheriff of Coffey County, Kan.

Petty Larceny

Melbourne Kail, 42, of Midland was arrested for petty larceny Monday evening outside the Corner Store in Klamath Falls for stealing a set of wrenches from the store.

Thieves Enter Local Market

City police are investigating the burglary of Pitcher's Market, 1050 California Avenue, Sunday night.

Insure Your Happy Holidays! DRIVE CAREFULLY!

Insure Your Happy Holidays! DRIVE CAREFULLY! Southern Oregon Insurance Agency. So. 6th & Shasta Way 2-4671

23 Years Ago

Monday, December 9, 1940 — Mr. and Mrs. Lorry Bergmann are receiving congratulations over the birth of a daughter, their first child, early Friday morning. Both mother and baby are doing nicely according to Bergmann who is a member of the city police force and was busy passing out cigars to fellow officers during the day.

Edmund E. Hass Vice-President PACIFIC NORTHWEST CO. Investment Securities Since 1921 Will be at the Winema Motor Hotel Thursday and Friday

PACIFIC NORTHWEST COMPANY Investment Securities Members: Midwest Stock Exchange Correspondents of Midder, Peabody and Company Members: New York Stock Exchange

THE Laundry Co. Insure With— LIABILITY FIRE Paul O. Landry V. T. Johnson 419 Main Street Ph. TU 2-2526 AUTO PROPERTY