

MARKETS and FINANCE

Stocks		Livestock	
NEW YORK STOCKS		KLAMATH FALLS LIVESTOCK AUCTION MARKET	
By United Press International		Receipts: All Cattle, 725 (incl. 300 calves); Hogs 54.	
Alcoa	54 1/2	Last week: Cattle 1225 (incl. 350 calves); Hogs 37.	
Alum Co Am	61	Compared two weeks ago: light feeder steers, 1.00 higher; other feeder cattle steady; steer calves steady to strong; heifer calves steady to weak; culler cows 50 higher; utility cows steady; slaughter culls 1.00 higher; hogs steady.	
American Air Lines	34 1/2	Slaughter Cattle: Steers, Good, 105-120; 100-120; 20-40-21-25; 50-60; 18-19-20.	
American Can	41 1/2	Heifers: Good-Choice, 55-70; 50-60; 24-35-24-10; Med., 30-35-30 lbs., 21-22-23.	
American Motors	19 1/2	Cows: Utility, 18-40-14-60; Cullers, 11-00-12-00; Canners, 8-60-10-00.	
AT&T	140 1/2	Bulls: Utility & Cml., 18-00-19-70.	
American Tobacco	26 1/2	Stockers & Feeders: Steers, Good-Choice, 50-65 lbs., 22-50-23-50; Med., 20-70-70 lbs., 17-80-20-60.	
Anacostia Copper	43 1/2	Heifers: Good-Choice, 55-70; 50-60; 24-35-24-10; Med., 30-35-30 lbs., 21-22-23.	
Armco	63 1/2	Sheep Calves: Good-Choice, 35-45; 30-40; 25-30-24-70; Good-Choice, 48-50; 40-50; 24-35-24-10; Med., 30-35-30 lbs., 21-22-23.	
American Standard	16 1/2	Heifer Calves: Good-Choice, 34-40; 30-40; 22-23-20; Good-Choice, 45-50; 30-40-21-23; Medium, 30-40-30 lbs., 18-20-23.	
Avco Corp	23 1/2	Cows: Good-Choice pregnancy tested heifers, 12-15 per head; medium bred cows, 12-15 per head.	
Bendix Corp	40 1/2	Bulls: Feeders, 14-60-16-40.	
Behlehem Steel	30 1/2	Ruby Calves: Med., 23-25 per head.	
Boeing Air	30 1/2	200-220 lbs., 15-00-13-20; Sows, 14-2, 30-40; 8-60-9-30; Weaner Pigs, 2-71-4-30 per head; Feeders, 100-160 lbs., 14-30-14-70.	
Brunswick	10 1/2	Reported by Ray O. Petersen, county extension agent.	
Caterpillar Corp	47 1/2		
Chrysler Corp	53 1/2		
Coca Cola	106 1/2		
C.B.S.	79 1/2		
Columbia Gas	29 1/2		
Continental Can	42 1/2		
Crown Zellerbach	42 1/2		
Crucible Steel	22 1/2		
Curtiss Wright	18 1/2		
Down Chemical	64 1/2		
Du Pont	212		
Eastman Kodak	114 1/2		
Firestone	37 1/2		
Ford	51 1/2		
Gen Dynamics	23 1/2		
General Electric	82 1/2		
General Foods	78 1/2		
General Motors	78 1/2		
General Portland Cem	22 1/2		
Gt Nor Ry	53 1/2		
Greyhound	46 1/2		
Gulf Oil	47		
Homestake	43 1/2		
Idaho Power	33 1/2		
I.B.M.	469 1/2		
Int Paper	31 1/2		
Johns Manville	48 1/2		
Kennecott Copper	71 1/2		
Lockheed Aircraft	30 1/2		
Martin	20 1/2		
Merck	105 1/2		
Montana Power	37 1/2		
Montgomery Ward	34 1/2		
Natl Biscuit	57		
New York Central	23		
Northern Natural Gas	49 1/2		
Northern Pacific	47 1/2		
Pac Gas Elec	31 1/2		
Pennex J.C.	43 1/2		
Penn RR	24		
Permanente Cement	16		
Phillips	49 1/2		
Procter Gamble	79 1/2		
Radio Corp	102		
Richfield Oil	44 1/2		
Safeway	59 1/2		
Scars	97		
Shell Oil	42 1/2		
Socory Mobl Oil	64 1/2		
Southern Co	52		
Southern Pacific	33 1/2		
Sperry Rand	19 1/2		
Standard California	59 1/2		
Standard Indiana	60 1/2		
Standard N.J.	71 1/2		
Stokely Van Camp	21 1/2		
Sun Mines	10 1/2		
Tex. Gulf Sulfur	19 1/2		
Tex Pacific Land Trust	23 1/2		
Thokol	20		
Trans America	50 1/2		
Trans World Air	29 1/2		
Tri-Continental	45 1/2		
Union Carbide	112 1/2		
Union Pacific	41 1/2		
United Aircraft	44 1/2		
United Air Lines	49 1/2		
U.S. Plywood	63 1/2		
U.S. Rubber	46		
U.S. Steel	33 1/2		
United Utilities	39 1/2		
West Bank Corp	39 1/2		
Westinghouse	35 1/2		
Youngstown	125 1/2		

City Council Approves 'X' Program

(Continued from Page 1)

negative of the state liquor commission.

Councilman Fleet, leading the campaign to deny the application, said the problem of drunkenness is unique in Klamath Falls in that it's a "concentration in the central business district."

Kellstrom said he would favor the renewal of off-sale beer and wine licenses to all downtown taverns which now don't have them.

Councilman Hamaker said he felt the drunkenness problem could best be solved by increasing the penalties from the present \$25 fine or five or 10 days in jail to a straight 30 days in jail.

A public hearing was held on the application by the First Baptist Church for a conditional use permit for construction of a new church at the end of Eldorado Avenue. Realtor Don Sloan appeared for the church and presented plans for rearrangement of property in the area and construction of a new street. The council took the matter under advisement.

Jan. 6, 1964, was set as the date for a public hearing on John Glubrecht's application for rezoning portions of the Loma Linda area to allow construction of multiple-family dwellings.

A. J. Steinbock, owner of Klamath Aircraft Service, was granted a 10-year lease on city-owned facilities at the municipal airport at a rate of \$187.50 per month. He indicated plans to build several new buildings on the site.

A public hearing on Modoc Lumber Company's request for vacation of a portion of Oak Street was continued until Feb. 17, 1964.

Councilmen heard the third and final reading of an ordinance adopting the city code as the law of the city, and the city recorder was authorized to give notice of assessments for the Shasta Way sewer project and the Avalon Street improvement project.

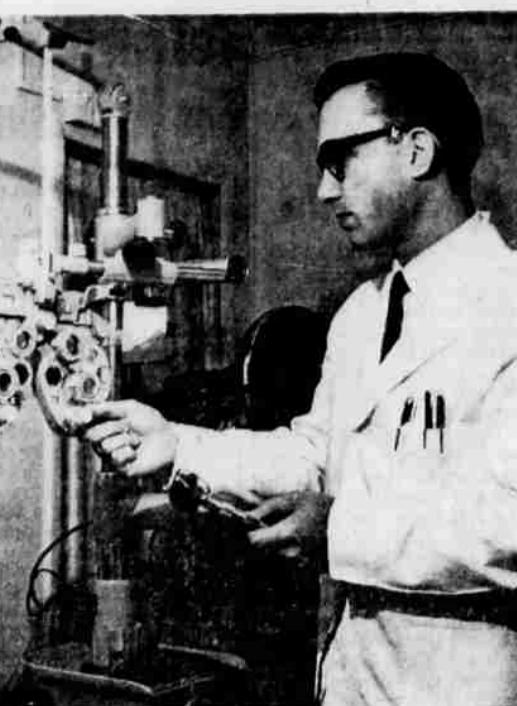
The annual audit for the 1962-63 fiscal year was accepted and Paul Matthews' contract for the 1963-64 audit was renewed at the same price of \$1,850.

Jack Adkins and Glenn Fleet, two Klamath Union High School seniors and representatives of the high school Key Club, appeared before the council to report on the success of the club's clean-up campaign and asked permission for two projects in an auto safety campaign.

Councilmen gave the club permission to paint a blue "X" at the site of each permanent injury accident in the city and a red "X" at the site of each fatal accident.



VERSATILE — Music provides enjoyment and relaxation after a busy work day for young Dr. J. L. Lawson, owner of Standard Optical Company. He is one of the 35 musicians appearing tonight with the Klamath Symphony in concert at Mills School Auditorium at 8 o'clock. Dr. Lawson, originally from Weiser, Idaho, is a graduate of University of California at Berkeley where he played trombone with many musical groups. Before coming to Klamath Falls, Dr. Lawson served four years with the Army and presently holds the rank of captain in the Army Reserves. Dr. Lawson and Mrs. Lawson have two children, Kay and Ken.



Hurlburt Succumbs — Ward Hurlburt, 68, Rte. 2, Box 538, Klamath Falls, died Tuesday, Dec. 3, while on a vacation with Mrs. Hurlburt in Fresno. Death apparently followed a heart attack. At one time he owned and operated a cattle ranch on the Green Springs. He served with the Army in France during World War I, was a member of the American Legion and of the Klamath County Sheriff's posse. Funeral services are to be held Thursday, Dec. 5, in Fresno. Survivors include the widow, Ethel Hurlburt, this city; one daughter, Mrs. Robert Hopkins, Klamath Falls; also two grandchildren.

Portland (UPI) — (USDA)

Livestock:
Cattle 250. Standard steers 1260 lb 18; utility-low standard 15; cutter-utility cows 11-10-13; utility beef breeds 13-14; canner 10-11-50; mixed good-low choice feeders 814 lb heifers 17.
Calves 50. Few high good-choice slaughter under 300 lb 29-29; single choice 220 lb at 30; few utility-standard 29-25.
Hogs 300. 1 and 2 barrows and gilts steady at 15.50.
Sheep 300. Steady. Slaughter lambs 35 head mostly choice near 85 lb woolled 17.75; choice-prime shorn 37.50.

Stocks

MUTUAL FUNDS	
Prices until 10 a.m. P.D.T. today	
Affiliated Fund	6.00 8.74
Atlantic Fund	4.79 5.28
Blue Ridge	11.93 13.04
Bullock	13.43 14.12
Chemical Fund	12.55 13.72
Colonial Fund	11.20 12.35
Conv. Inv.	10.12 11.06
Diver Growth	9.07 9.94
Dreyfus	18.58 20.00
E & H Stock	14.31 15.46
Fidelity Capital	9.97 10.84
Fidelity Trend	16.79 18.25
Fundamental	10.25 11.23
F.I.F.	4.56 4.77
Founders Fund	6.55 7.12
Hamilton H.D.A.	3.06 3.53
Incorp Inv.	7.21 7.88
Investors' Group	
Intercontinental	6.21 6.70
Mutual	11.96 12.39
Stock	18.72 20.24
Selective	10.35 11.08
Keystone S-1	22.25 24.27
Keystone S-3	15.30 16.70
Keystone S-4	4.35 4.76
M.I.T.	15.23 16.67
M.I.T. Growth	5.30 6.07
Natl Inv. XD	15.66 16.93
Natl Sec Div	4.26 4.66
Natl Sec Growth	8.35 9.13
Natl Sec Stock	8.00 8.74
Shareholders	11.11 12.14
Sup Inv Ser	7.64 8.33
United Accum	15.12 16.32
United Canada	18.28
United Income	12.65 13.83
United Science	7.03 7.70
Value Lines	5.26 5.75
Wellington	14.22 15.30
Windsor	14.22 15.48
Whitehall XD	13.56 14.60

Series Of Motions Failed To Derail Boardman Bill

(Continued from Page 1)

a dress rehearsal for higher office" are "leaning on a very weak reed."

"Time will be the better judge," Musa summed up. "Let us work for the people...and give them (Boeing) an opportunity. Let us uphold the honor and the dignity of the state," he added, referring to the fact that the lease already has been signed.

Voting against the bill were Sens. Chapman, Vern Cook, Alfred Corbett, Alice Corbett, Padeley, Fliegel, Hallock, Monaghan, Naterlin and Willner.

A motion by Sen. Vern Cook, D-Gresham, to send it to the tax committee for a number of amendments was defeated 18-12.

The House sent the bill to the Senate after a morning debate that lasted more than three hours and after two motions to sidetrack it failed. Six Democrats joined 27 Republicans in approving it. On the other side

Jury Panel Selected For Trial

A jury of eight men and four women was selected Monday afternoon to try Marie Barkley for shooting at Colleen Crume with a rifle last July 6.

It is the first case to be tried in the new term of court that began Monday. A new jury panel to serve for six months has been selected.

Miss Barkley, 22, was indicted by the grand jury on a charge of assault with a dangerous weapon for the alleged attack upon Miss Crume in front of a Gary Street residence.

Police said at the time of the incident that it was the result of a long-standing feud between the two women.

The trial was delayed this morning because one juror had to attend a funeral and the jury this afternoon was scheduled to visit the scene of the attack. Testimony was expected to begin in the trial later this afternoon in the circuit court of Judge Donald A. W. Piper.

Proposed Treaty Claim Settlement To Be Presented At Saturday Meet

All withdrawing members of the Klamath and Modoc tribes and the Yahooskin band of Snake Indians will meet in the old high school at Chiloquin, starting at 1 p.m., Saturday, Dec. 7.

Purpose of the meeting will be the presentation by claims attorneys, Glen A. Wilkinson and Donald C. Gormley, of a proposed settlement of the 1864 Treaty Claim, Docket No. 100, Indian Claims Commission, for the amount of \$2.3 million.

A judgment in this claim would be for the benefit of the tribe as constituted prior to termination, including all remaining and withdrawing members on the final roll.

This claim involves only the original session under the Treaty of 1864, and has no connection with the "boundary claim." That claim is still pending in the Indian Claims Commission.

A separate meeting has been scheduled for Friday, Dec. 20, in the Chiloquin Masonic Hall to present the proposed settlement to the remaining members.

State Police Arrest Man Wanted For Jumping Bail

A 21-year-old Chiloquin man who jumped \$500 bail on two traffic violations last Nov. 22 was arrested by Oregon State Police officers in Chiloquin Monday night, after they received a tip establishing his whereabouts.

Apprehended was Allen Lee Eggman who had been sought by police on charges of reckless driving and attempting to elude a police officer.

It was not until after Eggman had posted bail on the traffic violations that police learned he was sought for violating the terms of his parole. Eggman had been on probation after having served part of a six-year term for manslaughter. He was scheduled for arraignment on the traffic charges but failed to appear.

Eggman's arrest on the traffic counts came after he attempted to elude city and state police on a wild chase through Klamath Falls and along Highway 97 at speeds up to 100 miles per hour. He was finally captured when his automobile ran out of gas.

Eggman led police on another chase before his capture Monday night—but this time the final pursuit was on foot. Police records indicate that patrol car officers observed Eggman driving his car in Chiloquin and pursued him.

Eggman then left his car and fled on foot. Police captured the fugitive after a brief chase which ended when he tripped and fell.

Power Outage Hits Area

Some residents in the south-east suburban area were without power for as long as two hours this morning.

Sam Ritchey, district manager, reported that power first went out in the Altamont area south of South Sixth Street.

Trouble crews isolated the trouble as a burned conductor at a hot tap on Laverne between Bisbee and Altamont.

Switching was done to de-energize part of the trouble area, then the circuits were tied to the Enterprise and Pine Grove circuits. Because of the cold of the early morning, Ritchey reported, this threw too much of a load on these circuits, and another conductor burned out.

A switch was made to another substation and the power picture stabilized by tying the area to the Texum and St. Francis substations.

The outage was first reported at 7:20 a.m., and by 9:15 a.m. all but about 10 customers had service restored. The others were restored shortly after 9:15.

Funerals

CRAWFORD
Requiem Mass for Merle Malcolm Crawford will be held from Our Lady of Mt. Carmel Catholic Church in Chiloquin Thursday, Dec. 5, at 12:45 p.m. Reception of Holy Sacrament, Ward's Klamath Funeral Home, Wednesday, Dec. 4, at 8 p.m. Concluding services and vault interment in Wilson Cemetery.

ALLEN
Gravestone services for Isabelle Allen will be held from the Chapel at Ward's Klamath Funeral Home Thursday, Dec. 5, at 10 a.m. Concluding services Klamath Memorial Park.

HALL
Funeral services for Katie Robena Hall will be held from the Chapel at Ward's Klamath Funeral Home Thursday, Dec. 5, at 3 p.m. Concluding services Klamath Memorial Park.

Ex-Resident Succumbs

Funeral services will be held Thursday, Dec. 5, at 3 p.m. in Ward's Klamath Funeral Home for Mrs. Robert J. (Katie R.) Hall a former resident of Klamath Falls. Mrs. Hall died Dec. 1 in Ashland following a long illness. She was 83.

She was a native of Ontario, Canada, born Jan. 4, 1880 as Katie R. McAllister, and was married Dec. 13, 1911, to Robert John Hall. The family moved from Seaside to Klamath Falls in 1925 living here 30 years before moving to Ashland.

Mrs. Hall was a charter member of Peace Memorial Presbyterian Church, this city and of Maple Chapter No. 95, Order of Eastern Star.

Survivors include the widower, Robert J. Hall and one son Robert Hall Jr., both of Medford; daughters, Alice Brink, Klamath Falls, and Gladys Uterback of Sanford, Fla.; also three grandchildren.

Grains

CHICAGO (UPI)—Grain range	
High	Low
Wheat	
Dec	2.14% 2.13% 2.13%
Mar	2.17% 2.15% 2.16%
May	2.13 2.11% 2.11% 1/2
Jul	1.71% 1.70% 1.70% 1/2
Sep	1.72% 1.71% 1.71% 1/2
Options	
Dec	.69% .68% .68% 1/2
Mar	.71% .71 71%
May	.71% .71% .71%
Jul	.67% .67% .67%
Rye	
Dec	1.42% 1.41 1.41
Mar	1.47% 1.45% 1.45%
May	1.50% 1.47% 1.47%
Jul	1.45 1.43% 1.43%

TODAY'S POTATO MARKET

DEMAND	KLAMATH BASIN		CENTRAL OREGON		IDAHO	
	Fair	Moderate	Moderate	Moderate	Moderate	Moderate
MARKET	About Steady	Steady	Steady	Steady	Steady	Steady
F.O.B. PRICES PER CWT.	Unwashed:					
US1A 2 in or 4 or min	2.10-2.25	2.20-2.25	2.00-2.15			
6-14 oz	2.60-2.70	2.40-2.50	2.65-2.85			
baled 16 lb sks	2.50-2.60	2.40	2.90-3.25			
US2	1.90-1.70	1.40-1.50	1.90-1.15			
PRICE TO GRWR BULK CWT.						
US1	1.90-1.85	Too few Sales	1.40-1.50			
US2	.80-.80	Too few Sales	.35-.30			

KLAMATH BASIN CARLOT SHIPMENTS

	RAIL	TRUCK	TTL TO DATE	TTL A YEAR AGO
OREGON	2	9	1211	875
CALIFORNIA	5	9	1480	733

O'HAIR'S MEMORIAL CHAPEL

All Agree

The central, semi-residential location of O'Hair's Memorial Chapel has many very definite advantages, but perhaps the most important is convenience, families from throughout this area find the easy accessibility of our memorial chapel a true convenience

"Serving the Entire Klamath Basin"

PRIVATE PARKING

539 FINE • KLAMATH FALLS, OREGON

55 Years

The Landry Co. offers 55 years of experience in serving the insurance needs of the Klamath Basin as background to provide insurance service for YOU.

Insure With—
THE Landry Co.

LIABILITY * FIRE

Paul O. Landry
V. T. Johnson
419 Main Street Ph. TU 2-2526
AUTO * PROPERTY

Boards Eye Calendar, Discuss Budget Meets

Directors of the Klamath Falls elementary schools and Klamath Union High School met in a brief joint session Monday night and discussed the tentative 1964-65 school calendar and a schedule of meetings for the budget committee of the 1964-65 year.

It was indicated that the first budget committee meeting would be held early in 1964.

Directors heard a breakdown of bus operation costs for October and approved a change in the custodial working agreement providing for the notification of employees of job openings.

In a separate meeting prior to the joint meeting, the elementary school directors indicated no opposition to the proposed issuance of a conditional use permit for the construction of a new Baptist church at the end of Eldorado Avenue. A public hearing on that matter was held at the city council meeting Monday night and the elementary school board is one of the property owners affected by the proposal.

Chiloquin Man Dies

CHILOQUIN—Merle Malcolm Crawford, 50, a lifetime resident of Chiloquin, and member of a well-known Klamath County family died Dec. 1 in Hillside Hospital. He had been ill for about a year.

He was born July 17, 1913, and at the time of his death was a member of the Klamath Agency Corporation which owns the former Klamath Agency site.

Recitation of the Rosary will be at Ward's Klamath Funeral Home, 8 p.m. Wednesday, Dec. 4. A requiem mass will be said in Our Lady of Mt. Carmel Catholic Church, Chiloquin, starting at 12:45 p.m., Thursday, Dec. 5. Father Fumo will officiate. Final rites and vault entombment will be in the family plot in the Wilson Cemetery.

Survivors include a sister, Mrs. Betty Karr, Klamath Falls; brothers, Irving of Rogue River, and Wade of Williamson River, also several nieces and nephews.

Obituaries

RONFELDT
John Henry Ronfeldt, 87, died here Dec. 2, 1963. Survived by wife, Marie, of this city. Funeral services, Zion Lutheran Church Thursday, Dec. 5, at 1:30 p.m. Concluding services and vault interment in Klamath Memorial Park. Ward's Klamath Funeral Home in charge.

NWBACK'S
You are cordially invited to come to our Holiday House Dec. 1 thru Dec. 8, 3:00 p.m. 'til