

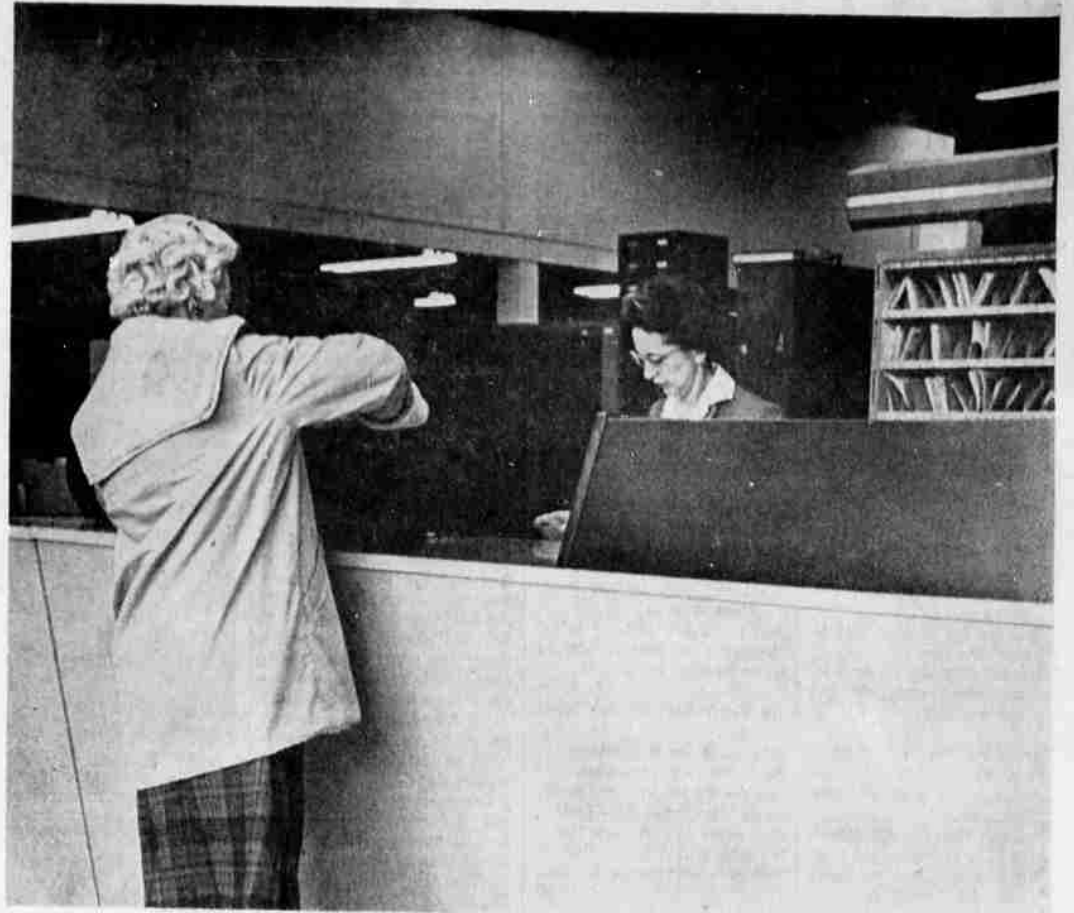
Postal Officials Ready For Rush In Temporary Home



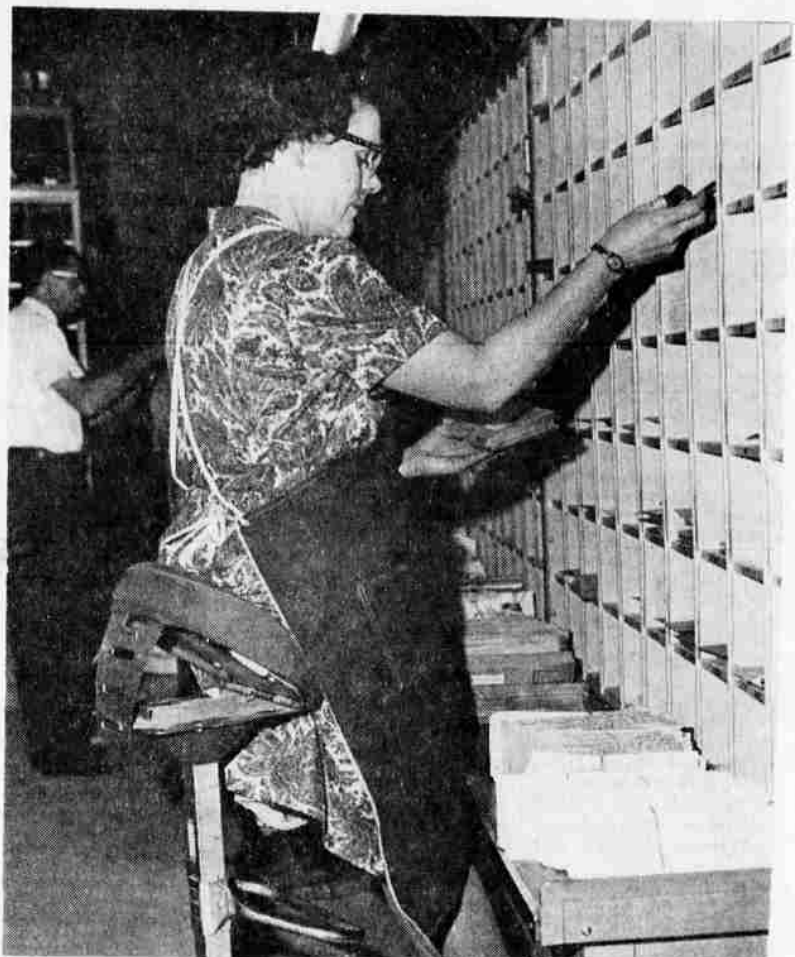
ACROSS THE SEA — The Klamath Falls Post Office is a busy place these days as the first deluge of Christmas mail begins to come in. Packages, letters and cards bound for every state in the union and many foreign countries come into the post office, housed in temporary quarters in a remodeled garage. Here, parcel post clerk Melvin Clayton attaches a postage sticker to a Christmas package bound for England.



TIMESAVER — One of the most useful machines in the Klamath Falls Post Office is this automatic canceller, which shoots a stack of letters through in a split second. Here, dispatch clerk Ed Gardner operates the machine in the post office.



STAMPS, PLEASE — The public meets the postal employees in the temporary Klamath Falls Post Office across a modern counter, replacing the old fashioned windows. Here, stamp clerk Pearl Libby (right) waits on a woman customer.



ONLY HUMAN HANDS — Letters come in virtually every size and are covered with every manner of writing and no machine has yet been devised to effectively replace the human mind and hands to sort them. Thousands of letters each day pass through the Klamath Falls Post Office. Here, substitute clerk Jane Gorsch sorts out a batch into holes bound for various Klamath Falls locations.

Record Flow Of Mail Expected This Season

The Klamath Falls Post Office faces Christmas 1963 in a remodeled garage—and all indications point to a record holiday flow of mail.

But local postal authorities are not dismayed about the prospect of a record Christmas. The garage at 734 Klamath Avenue contains slightly less room than the regular post office building on Seventh Street, but is arranged more conveniently.

Gone in the temporary quarters are the pillars of the old building. One problem is parking and persons having business at the temporary post office have had some difficulty finding parking space. But this problem is being studied by city and postal authorities.

The temporary post office will be in use for about a year while the regular building is enlarged and extensively remod-

eled at a cost of \$883,280 by the Work Saver Body Company of Seattle.

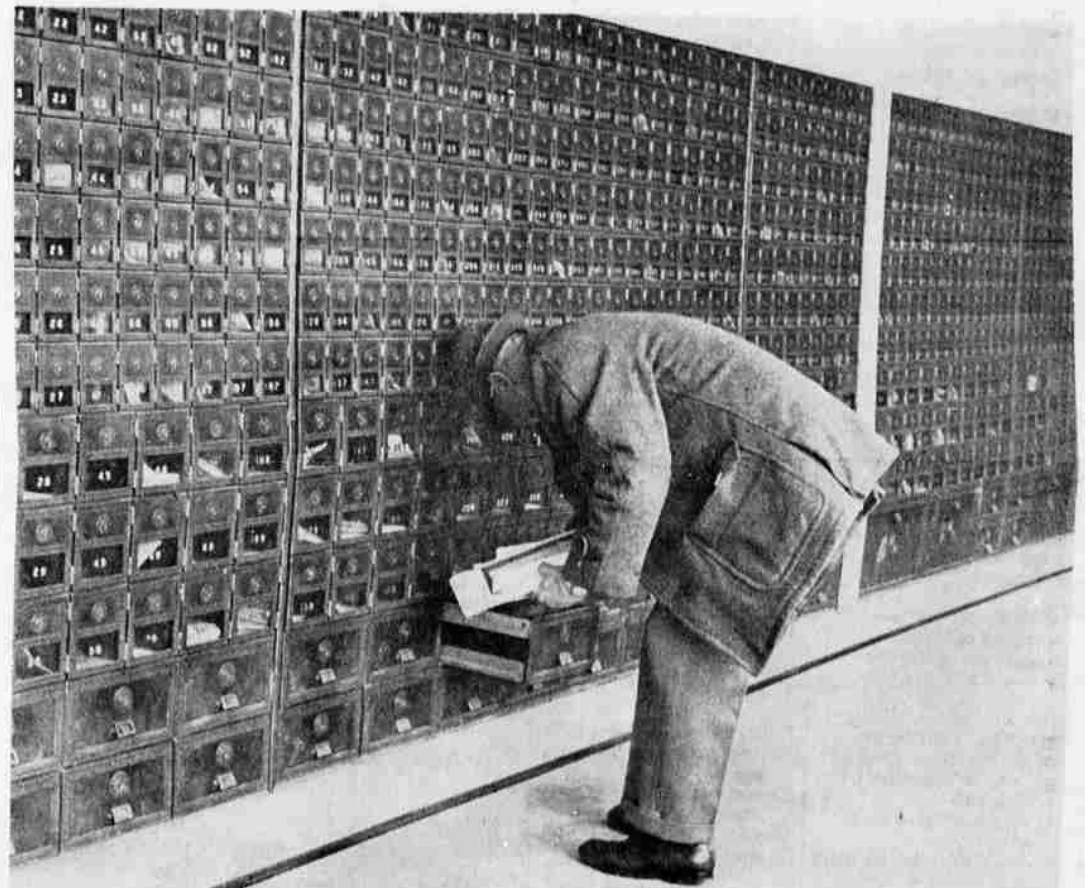
Housed in the quarters are 67 regular employees, including carriers and other personnel normally working outside. But during this Christmas season, the post office will increase its staff by nearly 50 per cent, adding about 20 employees for the season to receive, handle and dispatch thousands of Christmas letters, cards and packages in addition to the regular mail load.

One feature of the temporary post office is the modern counter, which replaces the old-fashioned windows. The lobby of the post office contains postal boxes and is separated from the rest of the building by a set of doors, to keep cold winter air from invading the main section.

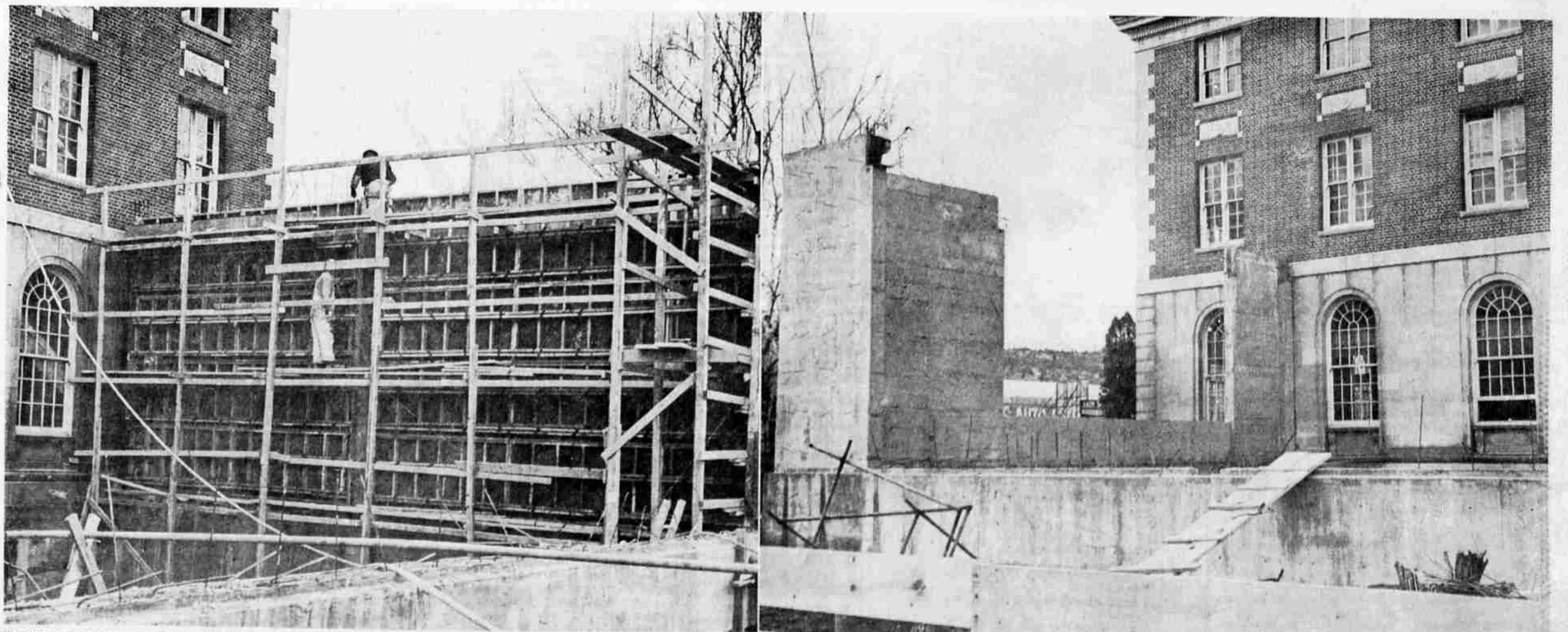
Herald and News

KLAMATH FALLS, OREGON, SUNDAY, DECEMBER 1, 1963

Features



BOX AFTER BOX — Post office box service continues at the temporary Klamath Falls Post Office on Klamath Avenue. Here, a boxholder collects his mail from a lower box in the lobby of the post office. The lobby of the temporary quarters is separated by a door from the rest of the building, so that cold winter air won't constantly be pouring into the main section.



MEANWHILE, BACK AT HOME — While the Klamath Falls Post Office resides in a remodeled garage and prepares for a record stream of Christmas mail, work continues on the regular post office building. The temporary quarters will be occupied for about a year while the present three-story structure on Seventh Street is enlarged

and remodeled. The work is being done by the Work Saver Body Company of Seattle for a contract price of \$883,280. At left, carpenters finish up a wooden frame into which concrete will be poured to form a wall of the north addition to the build-

ing. Concrete pouring on this wall began last Tuesday. At right is a wall on the south addition that has already been poured. While work is being done on the outside of the building, the inside is being extensively remodeled and modernized.