

MARKETS and FINANCE

Stocks NEW YORK STOCKS By United Press International Allied Chemical 53 1/4 Alum Co Am 69 1/4 American Air Lines 29 1/4 American Can 44 1/4 American Motors 29 1/2 AT & T 129 1/4 American Tobacco 29 1/2 Anaconda Copper 49 1/4 Armco 64 American Standard 17 1/4 Bendix Corp 49 1/4 Bethlehem Steel 32 Boeing Air 34 1/2 Brunswick 11 1/4 Caterpillar Corp 43 1/4 Chrysler Corp 90 Coca Cola 103 3/4 C.B.S. 79 1/2 Columbia Gas 29 1/2 Continental Can 45 Crown Zellerbach 32 1/4 Crucible Steel 23 1/4 Dow Chemical 59 1/4 Du Pont 248 1/2 Eastman Kodak 113 1/4 Firestone 37 1/4 Ford 50 1/4 General Dynamics 25 General Electric 80 1/4 General Foods 86 1/4 General Motors 79 1/4 General Portland Cement 22 1/4 Georgia Pacific 53 1/4 North Ry 53 1/4 Greyhound 45 1/4 Gulf Oil 47 1/4 Homestake 46 1/2 Idaho Power 34 1/4 I.B.M. 483 Int Paper 33 1/4 Johns Manville 48 Kennecott Copper 76 1/4 Lockheed Aircraft 36 1/4 Martin 18 1/4 Merck 105 1/2 Montana Power 37 1/2 Montgomery Ward 37 Nat'l Biscuit 56 1/2 New York Central 20 1/2 Pac Gas Elec 31 1/4 Penney J.C. 45 1/4 Penn RR 29 Permanente Cement 17 1/4 Phillips 51 Procter Gamble 80 1/4 Radio Corporation 91 1/4 Richfield Oil 45 1/4 Safeway 60 1/4 Sears 98 1/2 Shell Oil 46 1/4 Socony Mobil Oil 66 1/4 Southern Co 35 1/4 Southern Pacific 34 Sperry Rand 18 1/2 Standard California 63 Standard Indiana 64 Standard N.J. 69 1/4 Stokely Van Camp 21 1/4 Sun Mines 10 1/4 Texas Co. 67 1/4 Texas Gulf Sulfur 18 Texas Pacific Land Trust 27 1/4 Thiokol 20 1/4 Trans America 51 1/4 Trans World Air 25 1/4 Tri-Continental 47 1/4 Union Pacific 40 United Aircraft 44 1/4 United Air Lines 34 1/4 U.S. Plywood 61 1/4 U.S. Rubber 49 U.S. Steel 53 1/4 United Utilities 40

WALL STREET

By United Press International Stocks mixed in moderately active trading. Bonds mixed. U.S. government bonds firm in quiet trading. American stocks irregularly lower. Cotton futures steady. Wheat closed off 1/2 to up 3/4; corn up 1/4 to off 1/4; oats up 1/4 to 1/2 cent; rye off 1/4 to 1/2 cent; soybeans off 1/4 to 1/2 cents a bushel.

Wall Street Chatter

NEW YORK (UPI)—Kenneth Ward of Hayden, Stone & Co. points out that "no average can possibly clearly reflect the action of the many present day cross currents, or considerably switching operations that have been taking place in the market recently." "In fact," he adds, "such an irregular and selective technical price performance, based on sudden changes in corporate and other news, has been primarily responsible for the difficulty of trying to pin-point the direction of the averages. It is quite interesting to note that many of the same individuals and services who have been pessimistic toward the market for the past six months to a year, are now stressing the necessity of buying carefully selected stocks. This has been and still is the right policy to adopt."

Standard & Poor's says that "prospects are that the rise will be extended under the stimulus of encouraging business trends."

Livestock

KLAMATH FALLS Livestock Auction Market Oct. 22 Receipts: All Cattle 250; Calves 43; Hogs 100; Sheep 127. Last week: Cattle 1785; Calves 50; Hogs 22; Sheep 16. Compared last Tuesday, a 11 classes cattle about steady, considering quality and weighing conditions. Cows: Utility, 12.70-15.50; Cutters-Canners, 9.10-13.50. Bulls: Util. & Cmel., 17-19. Stockers & Feeders: Steers: Good-Choice, 5.75-6.45 lbs., 20.80-22.80; Good - Choice, 6.00 - 7.55 lbs., 19.10-21; Com.-Med., 17-20; Holstein, 17.10-18.70. Heifers: Good - Choice, 4.50-6.40 lbs., 18.80-21.10; Good - Choice, 6.40 - 7.25 lbs., 17-18.25; Com.-Med., 15.00-18.10. Steer Calves: Good - Choice, 4.00-4.70 lbs., 24.70-25.90. Heifer Calves: Good - Choice, 3.50-4.15 lbs., 21.70-23.20. Cows: Good bred heifers, 166; Med.-Good pairs, 197.50; Com.-Med. Cows, 101-122.50. Baby Calves: beef, 37.50 per head. Hogs: U.S. 1 & 2 Barrows & Gilts, 16-16.10; Weaner Pigs, 4.50-11 per head. Sheep: Feeder Lambs, Good-Choice, 13-15.00; Slaughter ewes, 3.25-4.10. Reported by F. A. Skinner, county extension agent.

PORTLAND (UPI) — (USDA) —Livestock:

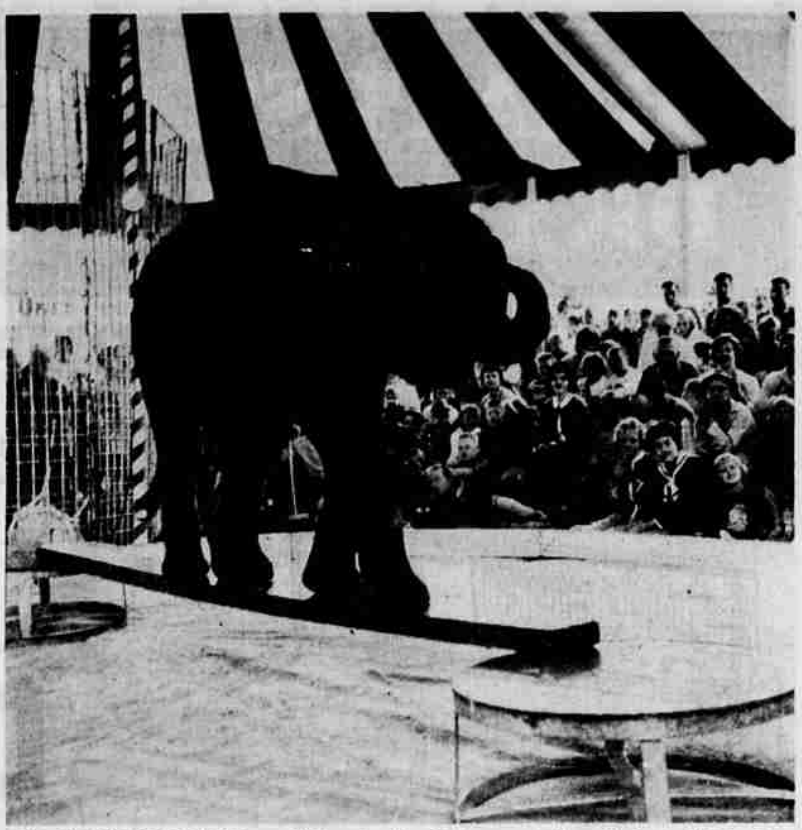
Cattle 200. Slaughter heifers mixed high standard-good 800-1000 lb 21; standard 17.25-18; cows canner-cutter 10-14, cutter 12 up; bulls single 675 lb utility 16. Calves 50. High good-choice slaughter 250-305 lb 27.29. Hogs 50. No early test. Sheep 200. One lot mostly choice wooled slaughter lambs 18; few lots choice, end of prime short 1 pelts 17-17.25; good-mostly choice 16.50-17. GRAINS CHICAGO (UPI) — Grain range: High Low Close WHEAT Dec 2.13 1/4 2.11 1/4 2.12 1/4 Mar 2.13 1/4 2.12 1/4 2.12 1/4 May 2.09 1/4 2.08 1/4 2.08 1/4 Jul 1.74 1.72 1/4 1.72 1/4 Sep 1.73 1/4 1.73 1/4 1.73 1/4 OATS Dec .71 .70 1/4 .70 1/4 1.70 1/4 Mar .73 1/4 .73 1/4 .73 1/4 May .73 1/4 .72 1/4 .73 1/4 Jul .67 1/4 .67 1/4 .67 1/4 RYE Dec 1.37 1.34 1/4 1.34 1/4 Mar 1.38 1/4 1.37 1/4 1.37 1/4 May 1.38 1.35 1/4 1.35 1/4 Jul 1.49 1.46 1/4 1.47

Potatoes

PORTLAND (UPI) — Potato market steady; 100 lb. sks washed Russets U.S. No. 1 unless otherwise stated: Size A Wash, 2.40-2.75; 6-14 oz, 2.50 - 2.75; Oregon 2.60-3.00; few higher; bakers 2.90-3.00, sized 2 oz. spread 3.50-3.75; U.S. No 2 bakers 2.25-2.35.

Obituaries

Frank Harry Marks 67, died here Oct. 23, 1963. Survivors: wife, Blanche E., of this city; daughters, Mrs. S. A. Jackson, Arcata, Calif., and Mrs. Joe Cronner, Layfayette, Calif.; stepdaughters, Mrs. William Wilson and Mrs. Lynden Bigger, both of Fullerton, Calif.; six 12 grandchildren; brother, Joseph R., Klamath Falls. Funeral services will be announced by Ward's Klamath Funeral Home.



THE CIRCUS IS COMING — Visitors to the 27th annual Klamath Basin Potato Festival at Merrill Friday and Saturday, Oct. 25-26, will find a free circus, "Yes, Sir!" free, the Stan Kramien Circus with trained animals, lions, ponies, dogs, chimpanzees and ToTo, the smallest known trained elephant. ToTo can do just about everything trained elephants can do. There will be three free shows daily. ToTo charmed old and young visitors to the Oregon State Fair this fall in Salem.

Cap, Boots Of Airman Recovered

The Coast Guard has found a cap, boots and other gear which were in a boat that was believed to have capsized with S.Sgt. James Morelock, 30, of Kingsley Field, last Saturday at the mouth of the Chetco River. The Coast Guard said the gear was found on the beach. The airman is missing and presumed drowned.

Morelock, assigned to the automotive maintenance shop at the airfield, had foreign service at Guam, England and Germany before he was assigned here recently from Geiger Field, Spokane.

He lived at 701 Division Street with his wife, Jean, and their three daughters.

Accident Hurts Pair

Two Klamath Falls men were injured Tuesday night when their autos collided head-on at North Eleventh and Washington streets during a heavy rainstorm.

Both drivers were taken to Klamath Valley Hospital for treatment of non-serious cuts and abrasions. Police said the accident occurred at 9:15 p.m. when a 1957 sedan westbound on North Eleventh was preparing to turn onto Washington and was near the center line. Officers said an eastbound 1955 sedan was also crowding the center line and the two cars collided head-on. The first auto was driven by Norbert Antonio Schleeper, 47, 914 Grant, and the other vehicle was driven by Frederick B o b Clark, 20, 2710 Angle Street.

Both cars were severely damaged. Police issued no citations.

House Fire Kills Three

NORWAY, Ore. (UPI)—Three persons, including two children, died Tuesday when fire swept through a two-story house at this community between Myrtle Point and Coquille in southwest Oregon.

The dead were tentatively identified as Mrs. Tinnie Morton, 54, Stayton; Linda Weekly, 4, and her brother, Darrell, 2, both of Norway.

Mrs. Jennie Weekly, 38, was taken to Mast Hospital in Myrtle Point with burns on the arms, face and head. Reports indicated the fire broke out between 6 and 6:30 a.m. Also escaping the blaze were Jack Morton, 19; Lester Lee Morton, 14, and Dennis Murphy, in his early 20's.

Authorities said Mrs. Weekly and Jack Morton jumped from the second story to escape. The bodies were taken to a Myrtle Point mortuary. Cause of the fire was unknown.

Weekend Visit

Mrs. William L. Garriott and young grandson, Billy Garriott, of Dunsuir spent the weekend with Mrs. Garriott's parents, Mr. and Mrs. Marion Barnes of Olene. Barnes is an ex-Klamath County deputy sheriff. Mrs. Garriott was raised in Klamath County.

Busy Schedule Readied For Festival At Merrill

MERRILL — Committees for the 27th annual Klamath Basin Potato Festival at Merrill are whipping last minute preparations into shape for the two-day festival Friday and Saturday, Oct. 25-27.

The festival, sponsored by the Merrill Lions Club, brings fun, galore, thrills and football chills, starting with the crowning of a pretty girl as festival queen on Friday night.

Agricultural, potato foods and flower show exhibits in the high school gymnasium, community booths and outside exhibits of farm implements will be open both days.

Queen Nondice McFall of Bonanza will be crowned and her court of princesses, Susan Russell, Tulelake; Dee Harris, Malin; Carol Lee Haskins, Merrill; Micki Wolf, Chiloquin, and Cheryl Thurman, Henley, and junior princesses Mary Ann Stevenson and Virginia Keady, Bonanza, will be introduced during the Friday night banquet at 7:30 in the grade school gymnasium.

Rummerup in the queen contest will be named at that time. Banquet speaker will be S. W. Paity, Portland, formerly of Klamath Falls, now assistant vice president and manager of the marketing department, First National Bank of Oregon. Lefty Wild Eagle Wilder of Fort Klamath will present his dancers in Indian costumes.

Saturday a parade of floats, musical groups, clowns, organizations, riders and other units, will travel down Front Street starting at 11 a.m. The parade will be followed by a free barbecue for an expected 2,000 to 2,500 visitors at the community hall. Kingsley Field jets will make a fly-over. Richard Davison and Associates of Klamath Falls will make parachute jumps at 1 p.m.

The Merrill Huskies and the Bonanza Antlers will meet on the high school football field at 2:30 p.m. A second league game is scheduled between the Malin Mustangs and the Chiloquin Panthers at 7:30. The Marine Board, at its meeting last week, authorized the disbursement of more than a quarter of a million dollars to 36 counties. Klamath's share was based on the county boat registration of 1,459.

From the proceeds paid by boaters, the board pays the cost of administration and the "title" to the general fund. The balance is then returned to the respective counties based on the number of boats registered in each county. The total amount disbursed to counties last week was \$255,588.75. The counties received \$5.75 for each boat registered.

Most Of Timber Downed Year Ago Reported Sold

Approximately 80 per cent of the two billion board feet of national forest timber blown down on Columbus Day 1962 was sold during the year following the storm, reports J. Herbert Stone, regional forester, U.S. Forest Service.

In the first 12 months after the destructive storm, 1,225 sales of windthrown timber were made on the national forests of Oregon and Washington. The sales involved more than 1 1/2 billion board feet of timber. An estimated 450 million board feet remain to be sold.

Nearly 3/4 billion board feet of the accessible blowdown has been logged, and it is estimated that 75 per cent of the total salvage blowdown will be harvested by May 30, 1964, if winter weather is not too severe. The timber salvage program is proceeding at a very satisfactory pace, Stone said, despite difficulties encountered by timber purchasers and the forest service. A great volume of the blowdown timber on national forest land was in rough terrain. This situation, coupled with the uprooted and broken condition of the trees, made sales preparation and logging both difficult and hazardous in many areas.

Found Dead

Barbara E. Moen, 60, was found dead in her residence at 202 East Main Tuesday afternoon, the apparent victim of an overdose of barbiturates. Authorities termed the death a suicide.

Pair Presents Japan Program

S.Sgt. John H. Hinely and Mrs. Miyako Hartnoll gave a one-hour speech and picture presentation on Japan for 22 members of the Beta Sigma Phi sorority Oct. 15. Sergeant Hinely, air operations technician, recently returned from an assignment at Misawa AB, Japan. Mrs. Hartnoll is a native of Hokkaido. She is the wife of Chief Warrant Officer John F. Hartnoll Jr., base communications officer.

Harvest Worker Arrested In Bend After Slaying In Merrill Last Night

A Mexican potato harvest worker was arrested in Bend by Oregon State Police moments before noon today in connection with the death of Rudy Rodriguez, a 35-year-old farm laborer of Phoenix, Ariz., who was shot with a bullet discharged from a .32 caliber pistol in Merrill about 3 a.m. this morning.

The subject of an intensive search by Southern Oregon and Northern California law enforcement officers early today was Isabel Pina Rodriguez, who was arrested while driving through Bend.

State police indicated that the weapon used in the slaying was found in the 1956 station wagon Isabel had been driving. Isabel is alleged to have shot and killed the victim as the two men were riding in a car with five other Mexicans.

Unconfirmed reports state that Isabel and Rudy had been quarreling about a food bill before the shooting. The two men are not related. The slaying first became known about 4 a.m. when a witness of the shooting reported the incident to a night officer, Pete Peterson of Tulelake. Peterson then related the report to Modoc County Deputy Sheriff William Miller and he located the body about an hour and a half later.

Reliable sources state that the victim was shot through the head as the Mexicans were drinking beer and driving through Merrill. They continued through that community toward the Malin Labor Camp and stopped near the Norman Jacobs' ranch where they disposed of the body in a dry ditch.

The group continued to the labor camp where Isabel fled in an automobile belonging to his brother, Thomas Rodriguez, a witness of the shooting.

County Gets Boat Money

Klamath County has received \$8,389.25 from the Oregon State Marine Board as its share of disbursements of fees paid by boatowners.

The Marine Board, at its meeting last week, authorized the disbursement of more than a quarter of a million dollars to 36 counties. Klamath's share was based on the county boat registration of 1,459.

Woodring Goes To Conference

Klamath Falls Parks and Recreation Department Director Gary Woodring was scheduled to leave the city this evening for Portland to attend the 1963 Oregon Parks and Recreation Society Conference.

Woodring will participate in a panel on "Our Professional Road Ahead—Freeway or Dead End" at the conference, to be held Thursday and Friday at the Multnomah Hotel. Theme of the conference will be "Your Professional Image." Thomas W. Lantz, retired director of Tacoma, Wash., parks and recreation, will be featured as the main speaker at a banquet Thursday evening.

Gunshot Kills Local Resident

Frank Harry Marks, 67, died late Tuesday night of what authorities termed a self-inflicted gunshot wound in the head. Marks was found in the basement of his home at 2105 Auburn at 12:10 this morning. Police said he had been in ill health.

Steering Failure Causes Crash, No One Injured

The steering column of a car broke while a woman was driving the vehicle on South Sixth Street Tuesday evening and the auto careened into a parked car. Police said the driver, Mabel Marie Bryson, 33, 2618 Boardman, was not injured.

Mrs. Bryson told police she was driving west on South Sixth and was making a lane change from the right to left lane when the steering wheel became free-turning in her hands. The car made a sweeping U-turn across the eastbound lanes of traffic and ploughed into a car parked on the south side of the street. The parked car is owned by Larry Allen Gibbs, 4304 Anderson. Both it and Mrs. Bryson's 1954 sedan received moderate damages.

Pair Presents Japan Program

S.Sgt. John H. Hinely and Mrs. Miyako Hartnoll gave a one-hour speech and picture presentation on Japan for 22 members of the Beta Sigma Phi sorority Oct. 15. Sergeant Hinely, air operations technician, recently returned from an assignment at Misawa AB, Japan. Mrs. Hartnoll is a native of Hokkaido. She is the wife of Chief Warrant Officer John F. Hartnoll Jr., base communications officer.

Bob Jones' Southern Oregon Insurance Agency So. 6th and Shasta Way TU 2-4671

Weather Roundup

Five Day Weather Western Oregon: Total rain heavy occurring mostly on Thursday and Saturday or Sunday; highs 54-64; lows 34-48; total rain one to three inches. Eastern Oregon: Rain more than normal, occurring mainly on Thursday and Saturday or Sunday; highs in 50's; low 40-42.

The Dalles and Hood River: Occasional showers through Thursday; highs 57-63; low 45-48. Bend: Increasing clouds, occasional rain Thursday with high 55-60; low tonight 43-48. Baker and La Grande: Mostly cloudy, showers late Thursday; high about 60; low tonight 33-37.

Western Oregon: Intermittent rain with gusty winds tonight and Thursday; highs 54-60; lows 44-50. Eastern Oregon: Increasing clouds tonight, rain likely Thursday; highs 54-60; low tonight 24-46.

Tatoosh to Blanco: Small crest warnings up for southwest to west winds 12-24 increasing to south 30-40 with gusts to 50 tonight; decreasing slowly Thursday; showery.

Temperatures during the 24 hours ending at 4 a.m. PDT to day.

High Low Pep Astoria 58 47 .94 Baker 70 43 .07 Brookings 61 — — Medford 58 45 .62 Newport 60 49 2.07 North Bend 63 47 1.63 Pendleton 71 45 .34 Portland 61 45 .38 Redmond 63 32 .15 Salem 57 48 1.61 The Dalles 56 47 — Chicago 84 65 — Los Angeles 80 61 — New York 60 50 — Phoenix 85 63 — San Francisco 71 58 .07 Washington 62 54 —

Fire Report

(10 a.m. Tuesday to 10 a.m. Wednesday) Klamath Falls Fire Department 1:58 p.m. Tuesday — Martin and Shasta Way, sawdust fire, no damage. Suburban Fire Department 5:07 p.m. Tuesday — Big Y Market, fire in light transformer, slight damage to ceiling.

Council Fathers Approve Prayer Language Change

VATICAN CITY (UPI)—Ecclesiastical Council fathers convened in the fall of 1962. After the vote, the fathers continued debate on another document concerning the role of the laity in the Catholic Church.

Sewing Class To Be Started

CHILOQUIN — A general meeting to organize an adult sewing class will be held Thursday, Oct. 24, in the home economics room of the Chiloquin High School from 7 to 9 p.m. Barbara Jacobson, high school home economics teacher, will instruct the course. The cost for the series of 10 lessons will be \$10.

The class meeting on Thursday, Oct. 31, has been cancelled, with the next regular meeting scheduled Nov. 7.

LOST WEIGHT? GAINED SOME?

Get back into those good clothes by having economical alterations done quickly and expertly in our shop.

WE "REBUILD" WARDROBES (All Work Guaranteed) in a Hurry! We'll Rush Your Order! IDA'S TAILOR SHOP 125 N. 8th TU 4-6122

THE RED CARPET IS OUT FOR YOUR Shopping Pleasure DOWNTOWN KLAMATH FALLS

MUTUAL FUNDS

Prices until 10 a.m. PDT today Bid Asked Affiliated Fund 8.38 9.06 Atomic Fund 4.78 5.22 Blue Ridge 11.98 13.09 Billock 13.95 15.28 Chemical Fund 12.31 13.46 Colonial Fund 11.66 12.74 Comw. Inv. 10.00 11.02 Diver Growth 8.88 9.73 Dreyfus 18.19 19.77 E & H Stock 14.28 15.43 Fidelity Capital 9.79 10.64 Fidelity Trend 16.71 18.16 Fundamental 10.14 11.11 F.I.P. 4.38 4.80 Founders Fund 6.59 7.16 Group Sec Com 13.72 15.02 Gr Sec Avia El 7.13 7.82 Hamilton H.D.A. 5.07 5.54 ICA 10.95 11.97 Investors' Group Intercidental 6.27 6.78 Mutual 11.43 12.39 Stock 19.23 20.38 Selective 10.47 11.19 Variable 7.12 7.69 Keystone S-1 22.35 24.40 Keystone S-3 15.01 16.38 Keystone S-4 4.33 4.73 M.I.T. 15.29 16.71 M.I.T. Growth 8.45 9.23 Nat'l Inv 15.95 17.24 Nat'l Sec Div 4.26 4.66 Nat'l Sec Growth 8.33 9.10 Putnam Fund 15.27 16.69 Putnam Growth 8.93 9.76 Selected Amer Shareholders 11.12 12.15 Sup Inv Ser 7.61 8.51 United Acum 15.05 16.46 United Canada 18.27 — United Income 12.64 13.81 United Science 7.14 7.80 Value Lines 5.39 5.89 Wellington 14.15 16.08 Windsor 14.40 15.63 Whitehall 13.91 15.04

LOCAL SECURITIES

Bank America 65 1/4 Bank Pacific 31 1/4 Cal Pac Util 24 1/4 Con Freight 10 1/4 Cyprus Mines 22 1/4 Equitable S & L 30 1/4 1st Nat'l Bank 72 1/4 Jantzen 24 1/4 Morrison Knudsen 29 1/4 Multi Kennels 4 1/4 N.W. Natural Gas 34 1/4 Oregon Tel 1 1/4 PP & L 26 1/4 PGE 26 1/4 U.S. Nat'l Bank 89 1/4 Teknon 21 1/4 West Coast Tel 23 1/4 Weyerhaeuser 30 1/4