

# Home Fire Drills Pay Off For Five In Illinois Family As Panic Averted

ELMHURST, Ill. (UPI)—Two thousand children die in home fires in the United States every year and the five Hendrich kids might have been among them if it hadn't been for father.

The fire drill rule laid down by his father. He yelled "fire!" The entire family cleared the home within two minutes of the alarm. Three minutes later, when Hendrich rushed to the burning room with a fire extinguisher, he could not get near it because of the heat.

Hans Grigo, technical consultant for the home department of the safety council, said children under 15 are slow to think of escape methods in emergencies.

They can't wait, Hendrich told the youngsters to break the windows with a chair, a shoe or any other object, and wait until rescuers put a ladder up to the window.



DRILL TIME — Robert Hendrich, who holds regular fire drills for members of his family in Elmhurst, Ill., gives family demonstration on use of fire extinguisher. They are, left to right, sons, Bill, 6, John, 10, Robert Jr., 3, daughters, Mary Lee, 8, Kristin, 2, held by Mrs. Hendrich.

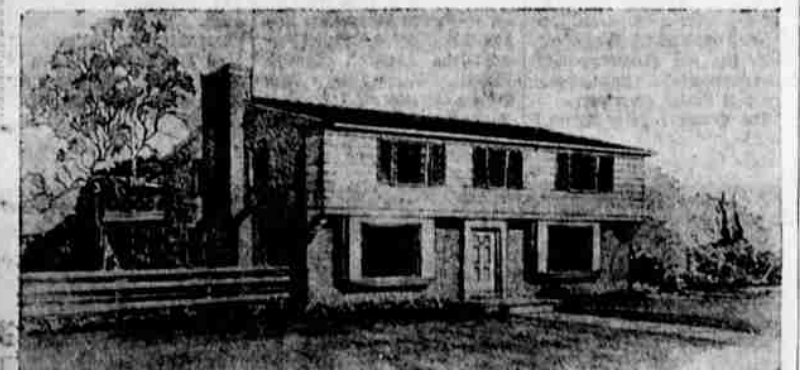
## Classic Colonial Boasts Two-Level Roominess

The attraction of this design is in its classic colonial elegance. It will stand as a sentinel of progress on any street in your town.

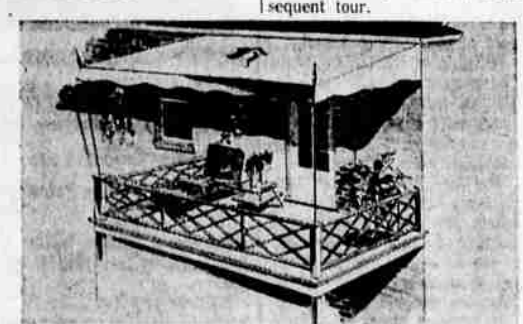
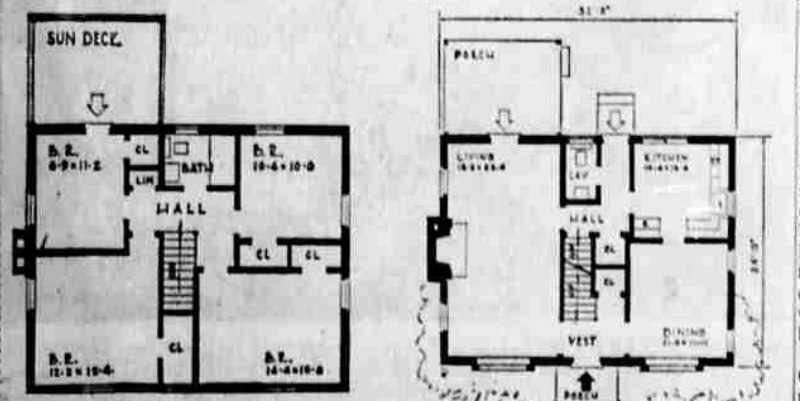
Remaining portion of the downstairs contains kitchen, dining area and lavatory. Even for a spacious home, the dining area is conspicuously roomy.

door. This area has three good-sized bedrooms and a fourth that is perfectly suited for conversion to a den or library.

## Family Homes



DESIGN 266 808 Sq. Ft. 21,363 Cu. Ft.



BUILDING PLANS • PLAN BOOKS • ORDER FORM Herald and News Plan Dept. FAMILY HOMES 2900 Alpha St., Lansing, Mich.

STILES Plumbing & Heating 2011 Oregon Ave. TU 4-3798

# Border Incidents Widen Split Between Soviets And Red China

By HENRY SHAPIRO United Press International MOSCOW (UPI) — The eruption of incidents reported along the almost 5,000-mile Soviet-Chinese border has given a new dimension to the massive Sino-Soviet conflict which has already shattered the monolithic structure of the Communist camp and virtually divided it into two rival blocs.

Irrevocability of the split between the two Communist giants was provided Oct. 4 with the publication of a voluminous Soviet statement which, in effect, outlawed Peking from the Communist movement.

The editorial was preceded on Sept. 21 by a Kremlin declaration which listed a host of serious Sino-Soviet interstate conflicts (as distinguished from ideological divergences) highlighted by the charge that China was engaged in an old-fashioned imperialist practice — territorial grabs.

000 border incursions across the Soviet frontier in the Siberian Amur and Ussuri valleys, the Kremlin sternly warned against Chinese efforts "artificially to create territorial problems . . . by reference to old testament data and the tombs of ancestors."

as the Russians claim, to negotiate the dispute. The Russian-Chinese border, the longest in the world, is divided into two parts. The eastern half of the frontier separates the Soviet Siberian far east from Manchuria and the west segment divides Sinkiang from Soviet Central Asia.

## New Ideas Proposed To Ease Traffic Ties

NEW YORK (UPI) — Dramatic proposals to break the national traffic bottleneck are expected to emerge when Congress enacts the mass transit bill to help free the country's cities from creeping paralysis.

resembles a bus, skims along the surface and carries a score or more of passengers. The magazine said these proposals have been stimulated by studies which show that 120 million automobiles would be on the nation's highways by 1980, compared with 66 million today.

The traditional 300-year-old great power conflict between czarist Russia and imperial China appeared to be flaring up again — and in this open ideology.

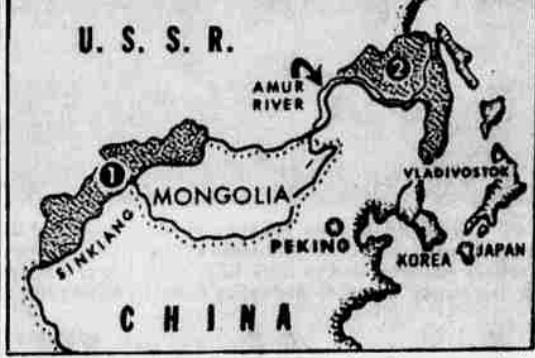
Earlier in September, Peking had accused Soviet authorities in Sinkiang (another historically disputed area in Chinese Central Asia) of coercing tens of thousands of Chinese citizens into fleeing to the Soviet Union.

Following a pause of nine years Peking this year, in an official declaration, said that it would not recognize the "unequal treaties" of the last three centuries under which the imperialist powers carved up the crumbling and helpless Chinese empire.

## Mom Visits Jailed Son

HONG KONG (UPI) — Mrs. Ruth Redmond of Yonkers, N.Y., entered Communist China today to visit her imprisoned son "with a burning heart and high hopes" for his good health and eventual release.

Steelways said the specialists employed to untie traffic knots and get people in and out of town with comfort, safety and speed regard rapid transit as a major part of the answer. Such a solution indicates expansion of steel's markets, especially for the stainless and high-strength, low alloy steels widely used in commuter trains, the magazine said.



DISPUTED AREA — The eruption of incidents reported along the almost 5,000 mile Soviet-Chinese border has given a new dimension to the massive Sino-Soviet conflict. This newsmap shows areas (1) and (2) which have long been of historic importance to the two countries and have figured prominently in treaties of major political significance.

With a new look: erector sets. Now with panels and girders for building such space age machines as planetary probes.

Of course, how many little things there are to take care of depends a great deal on your locale. However, the following should take care of your needs regardless of where you live.

## Winterizing Of House Important Too

By MR. FIX Newspaper Enterprise Assn. After you've put anti-freeze in your car, you're ready for winter in that respect.

Stay clear of larger trees that are badly broken, that have limbs hanging precariously. And avoid by all means broken wires. Patience is important. Let the professional remove the hazard.

ISRAELI DRAMA NEW YORK (UPI) — Israel's national Habimah Theater, the country's oldest repertory group, will play 18 weeks in the United States beginning in February, 1964.

Don't wait for ice to form before putting in a supply of rock salt. Keep a supply in both house and garage.

## HOME WORKSHOP

"QUICKIE" PLYWOOD CHAIR CUT PIECES OUT OF 3/4" PLYWOOD - ASSEMBLE WITH GLUE AND F.H. WOOD SCREWS, COUNTERSINK SCREWS. Includes diagrams and instructions for building a chair.

## This Is Story Of Disaster That Didn't Happen

By ROBERT J. SERLING WASHINGTON (UPI) — This is the story of a plane, a pilot, and a disaster that didn't happen.

Go back to July 12, 1963. Shortly before 11 p.m., CDT, a United Air Lines Boeing 720 jet commanded by Capt. Lynden E. Duescher was cruising over Nebraska at 35,000 feet.

on tortured metal and human bodies alike. The time was 10:55 p.m. CDT. Instinct Vs. Training At this precise moment, the fate of the 33 passengers hinged on Duescher's instinctive reaction versus the training that is drummed into the mind and soul of every jet pilot.

And when you add the finishing touches of vibrant color, do it with a bold, unafraid eye and hand. A set of canary yellow lacquer bowls, a collection of shining coral and blue ceramics, or a multi-colored abstract painting last a long time without getting tiresome.

Be modern with MOEN FOR EVERY KITCHEN! One handle saves time and water. STILES Plumbing & Heating 2011 Oregon Ave. TU 4-3798