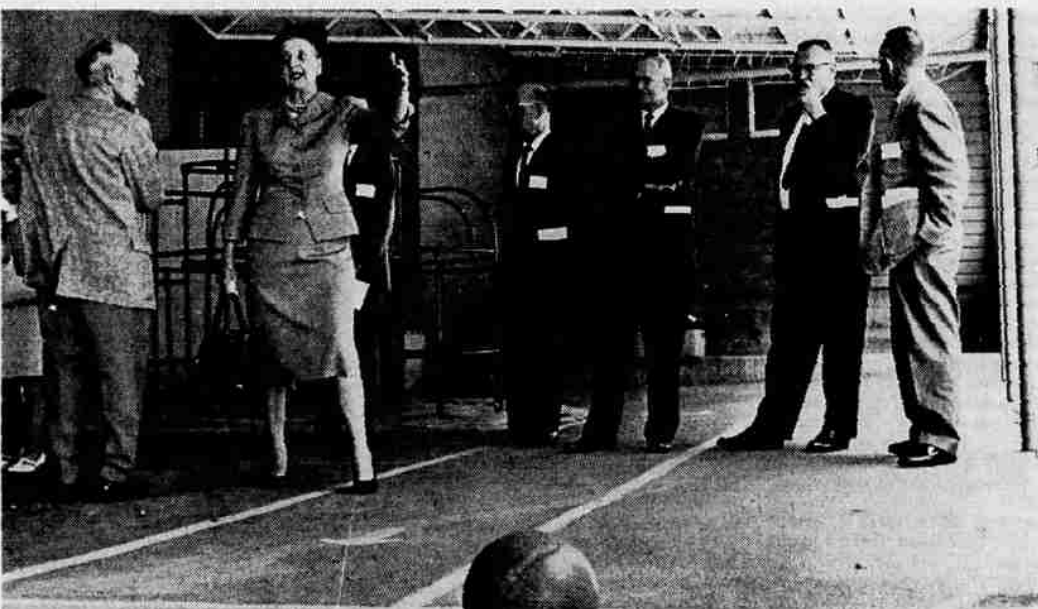


United Fund Puts Charity Dollar To Efficient Use



WHAT ARE THEIR DREAMS? — These tots napping at the Waverly Baby Home may be where they are because their parents proved inadequate to the task of raising children to the point where a local court had to intervene to see that the children received proper care. The children might be returned to their natural parents after

the grown-ups have been counseled or they might be ready for adoptive homes. Care of four Klamath children during 1961-62 cost the home slightly under \$2,000 while they received less than \$600 as a result of Klamath donations.



AGENCY OPERATION EXPLAINED—Col. Ida N. Spiess, executive director of The Volunteers of America of Oregon, Inc., points out some of the outside recreation facilities at the agency's mothers and children's home in Portland to Gaylord Upington (right), and other volunteer members of the Klamath United Fund organization (left to right), Don Bingham; Paul Meier, dean of instruction, OTI; Sam Ritchie, manager of PP&L; and Herb Shults, rough lumber supervisor at Weyerhaeuser. This is

the only agency in the state that takes care of a mother and her children under the same roof in an attempt to keep the family together. A great many of the mothers who apply for help or who are referred, receive counseling in their own homes. Four Klamath children were cared for during 1961-62 by the "Volunteers" at a cost of \$752. The agency in turn received \$286 from Klamath County's contributions to the Oregon United Appeal through United Fund.



WHO'LL TAKE ME? — This is one of the many babies at the Waverly Baby Home in Portland, one of the agencies supported by funds from the Klamath County United Fund. The babies have been abandoned or have been neglected to a point where they have been placed in the home by the court. Many of the tots are placed in foster homes.



HAPPY ORPHANS — The children at the Waverly Baby Home can enjoy life like other youngsters, but they sense that they're not quite like others and the fate of living without mother and father does leave its mark. Their eyes have a certain longing a person can never forget. Many go into adoptive and foster homes, but the rate is never fast enough to stem the overcrowded conditions.

From the Camp Fire Girls to the agencies for unwed mothers—

Twenty-four agencies serving the physical and spiritual needs of Klamath County citizens receive their support from the United Fund.

The fund is conceived as a device to efficiently raise money for these organizations without wasteful duplication of effort.

This year, the goal is \$148,311 and it will be assaulted in a 30-day concentrated effort by hundreds of volunteers.

Already, about \$30,000 of this has been raised in a pilot campaign among 12 of the largest firms in the county and their employees.

The regular campaign begins Monday with a kickoff breakfast and will end, it is hoped, with another meeting announcing the successful attainment of the goal.

Monday's breakfast meeting will be held at the Winema Hotel, starting at 7 o'clock. The public is invited and the cost of breakfast is \$1, served by the Camp Fire Girls and Girl Scouts. Early arrivals will receive free shoeshines from the Boy Scouts.

The keynote address will be delivered by the Rev. Laing Sibbett, pastor of the Peace Memorial Presbyterian Church and a member of the United Fund Board of Directors.

The board of directors is composed of 30 local men and women—most of them heads of business firms or government or agencies or outstanding professional people.

The board sets the annual United Fund budget after receiving the requests of the agencies served by the campaign.

In addition to the board, the United Fund has a full-time secretary-manager, Phillip Parsons, and a one-girl office staff.

Most of the money collected is used by local agencies, but of the \$148,311 goal, \$20,971 is sent to the Oregon United Appeal for use in other agencies which aid local persons.

In July, representatives of most of the firms in the pilot campaign visited these out-of-town agencies—the greatest number of which are in Portland. (Photos on this page are of that trip.)

The agencies include the Albertina Kerr Homes, American Social Health Association, Boys and Girls' Aid Society, Catholic Services for Children, Children's Farm Home, Christie School, Oregon Council on Crime and Delinquency, Our Lady of Providence Nursery, St. Mary's Home for Boys, United Service Organizations, Villa St. Rose, Volunteers of America Mothers and Children's Home, Waverly Baby Home, YMCA of Oregon State University, YMCA-YWCA of the University of Oregon, and Youth and Government.

Local funds go to these agencies only for the care and services to local persons—about 73 in all. An example is a Klamath Falls boy in one of the Portland youth homes.

Locally, the agency receiving the most support from the United Fund is the American Red Cross, which is budgeted for \$32,010. The Boy Scouts receive \$18,396 and the Salvation Army, \$17,507. Other local agencies and the amount they receive are YMCA, \$15,000; Camp Fire Girls, \$14,000; Girl Scouts, \$9,828; and White Shield Home, \$1,500.

In addition to the \$148,311 goal, \$4,500 is set aside for "reserve for pledge loss." Campaign administration is budgeted for \$7,415 and the year-around United Fund administration receives \$7,175.

Contributors to the campaign may designate the agency which their money will aid.

The pilot campaign began Sept. 1 among the 12 large firms and was designed to get these companies cleared in advance, and also to gain experience in campaign techniques.

The pilot goal was \$35,405, leaving \$112,906 for the regular campaign beginning Monday.

The campaign is being conducted through 11 division chairmen and the divisions are broken down into units, each of these having a chairman. In addition, each chairman has a staff of volunteers who will actually be soliciting among the firms and organizations involved. A special gifts division will solicit large individual donations.

"Your fair share" asked of employees is one hour's pay per month for a year. The donations may be deducted from the employee's check each month by their firm.

For salaried employees, the United Fund is asking one per cent of the monthly salary for a year. United Fund meetings will be held in each of the city's businesses for employees.

After Monday morning's kickoff breakfast, there will be noon luncheon meetings each Monday during October for progress reports.

But throughout all of the "Giving everybody an opportunity to give and to know what they are giving for."

Herald and News Features

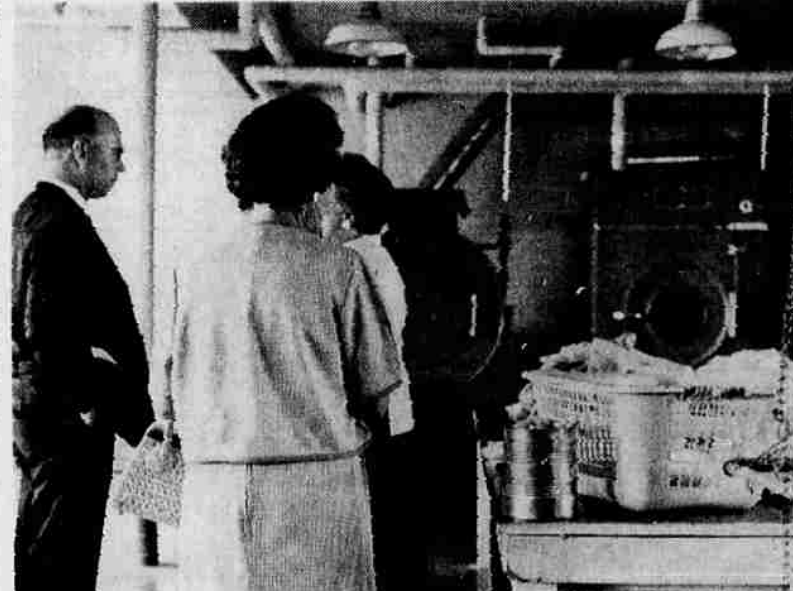
KLAMATH FALLS, OREGON, SUNDAY, SEPTEMBER 24, 1962



FACES OF THE HOMELESS — These children at the Waverly Baby Home in Portland have a dream. They dream about having a mother and father... some day. The home is one of the units supported in part, by the Oregon United Appeal which in turn is aided by the United Fund. Recently a group of local UF volunteers toured some of the agencies and homes in Portland that received local aid through UF. They learned that 73 Klamath Falls children and older boys and girls were taken care of in 10 of these agencies during 1961-62 at a cost of \$66,314. For the children of our own country the agencies received \$21,407 in support from local contributions. Pictured along the fence are Mrs. Ross Ragland and Harold Howard (partially obscured).



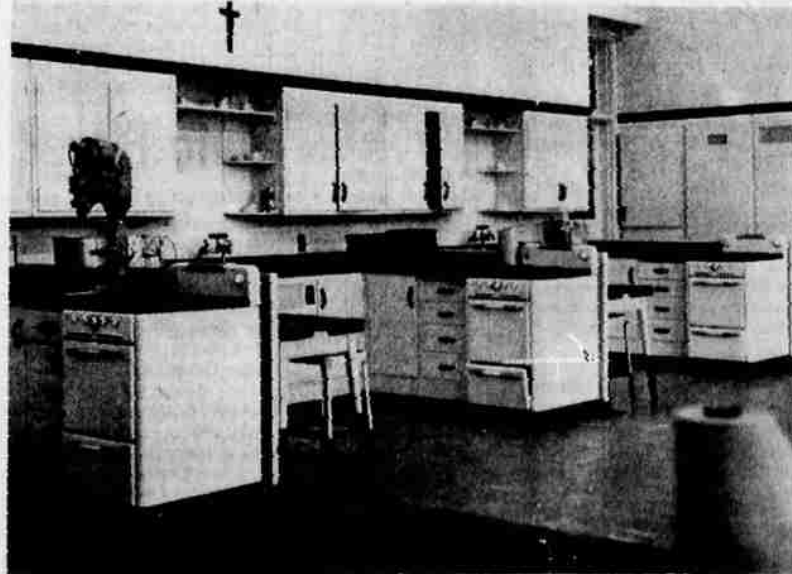
LOCAL MEN TAKE TOUR BREAK — Part of the group of UF volunteers from Klamath that recently toured agencies that care for the state's needy children pause outside a house connected with Villa St. Rose, a home and school for court committed girls between the ages of 12 and 21. St. Ursula's residence is a transition house where a limited number of girls live after leaving the school and while continuing their education or work in the community after leaving Villa St. Rose. Pictured are (from left), Charles Johnson, Klamath Lumber and Box; Paul Meier, OTI; Gaylord Upington, UF board member; Phil Parsons, executive secretary UF; Ed Isensee, Cascade Laundry; Herb Shults, Weyerhaeuser, and Don Bingham, Klamath Plywood.



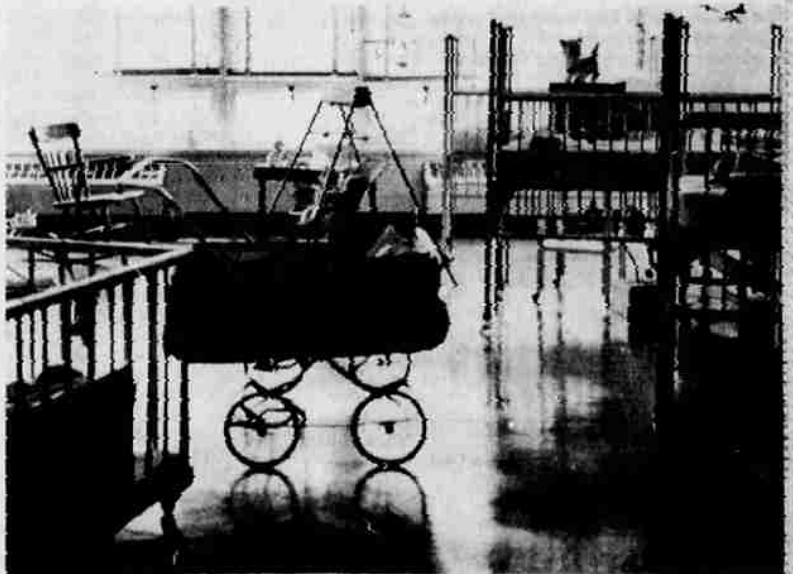
FACILITIES AT LOUISE HOME — Mrs. Ross Ragland and Herb Shults view the laundry facilities at the Louise Home for court referred wayward girls and unwed mothers in Portland. The home, one of the Albertina Kerr homes, gives temporary care for about 200 girls each year between the ages of 12 to 21. Most of the girls are court committed, but there are some voluntary referrals and some by parents and recognized agencies.



DORM AT CHRISTIE SCHOOL — Two court-committed and two welfare children from Klamath County were received at the Christie School in 1962. The Christie project is mainly an attempt at social adjustment through group therapy, but there is a professional staff available to handle more serious individual problems. Emotionally disturbed children will be taken care of by outside professional people if the problem is too big to handle at the school. All the agencies make full use of outside professional service and usually on a "gratis" basis.



GIRLS LEARN BY DOING — The girls at the Villa St. Rose home and school have an opportunity to master the art of kitchenery for future family life or for outside employment after they leave the home. The girls have an opportunity to continue their education in either academic or trade subjects during their stay at Villa St. Rose. Each year a few of the girls from the home enter colleges and universities of their choice after obtaining scholarships in stiff competition with public high school students.



CHEERFUL NURSERY WARD — The cheerful atmosphere at the Providence Nursery in Portland hides the cheerless fact that the children at the nursery are either abandoned, neglected or retarded. Most of the children at Providence, who are able, are sent to adoptive homes when they are still very young. The new parents are screened thoroughly and there is seldom trouble after placement. According to a published financial statement the nursery had a \$3,000 deficit at the end of 1962. Care of four Klamath youngsters cost the nursery \$2,707, but they received only \$920 from local donations.