

**NEW VENTURE WILL AID BASIN** — Opening of the Ore-Cal Feed Lots at Malin was announced this week by Ivan Kandra, company president. Kandra, member of a pioneer Basin family, is also president of Winema Elevators of Tulelake, grain buying and selling firm. The new feeding operation covers approximately 140 acres, 22 now under feed lot fences. Some 2,500 cattle are on fattening rations now. Top view shows Herefords lined up at feed bunks. They're being broken in on bulk feed before going on ground rations of hay, grain, concentrates and molasses. Lower view shows the former Malin Grain and Feed Mill purchased by the Ore-Cal Company to process cattle feed.



**KNOWS CATTLE** — Jack MacAffrey, former manager for the Carnation-Albers cattle feeding plant at Redmond, will manage the Ore-Cal Commercial Feeding Plant at Malin. He has had long experience in handling cattle.



**BIG JOB** — President of Ore-Cal Feed Lots at Malin is Ivan Kandra, who has been in business in Klamath Basin for several years. Kandra is also president of Winema Elevators of Tulelake. He visualizes a promising future in the use of a large percent of Basin produced feed grains and hay in consumption by cattle in commercial feed lots he will operate.

## Department Sees Record High Output This Year

WASHINGTON (UPI)—The output of American agriculture this year is likely to be record high. The Agriculture Department's September crop report Tuesday showed that field crop production this year already has equaled the record output of 1960 and 1962. Given favorable weather for the remainder of this growing season and normal harvest conditions, the field crop output easily could reach a new peak.

But without a late season increase in field crop output, the total, all-crop production likely will set a new record. Livestock production this year already is above that of any other year. The 1963 livestock output combined with field crop production is expected to be the largest outpouring of food, feed, and fiber in history.

The crop production index now stands at 103 per cent of the 1957-59 average. The same percentage was reached in 1960 and 1962. Aiding the large volume now in sight was an increase during August in the composite yield per acre index covering 28 major crops. The composite yield now is 112 per cent of the 1957-59 average, and equal to the record set a year ago.

The big record setter in this year's crop was corn. The department estimated production of this key livestock feed at a record 3.94 billion bushels, which surpassed the previous high of 3.91 billion bushels in 1960. The corn estimate was 2 per cent higher than a month ago, 8 per cent above a year ago, and 11 per cent more than the 1957-61 average.

**Ford Trucks Last Longer**  
on the **FARM**  
See your Farm Truck Headquarters  
**BALSIGER MOTOR CO.**  
Main of Esp. Ph. TU 4-3121

## New Commercial Feeding Operation Inaugurated By Ore-Cal Feed Lots

By RUTH KING  
MALIN — A new commercial cattle feeding operation that will bring thousands of head of cattle to Malin from Oregon and California, has been established with Ivan Kandra, as company president.

The firm, Ore-Cal Feed Lots, will function on the former site of the Warner Valley Land and Cattle Company feed lots south of Malin.

Jack MacAffrey, former manager of the Carnation-Albers Cattle feeding properties at Redmond, will manage the new business. Twenty five hundred head of cattle are now on hand, consigned by large operators from summer pastures.

Kandra, also president of Winema Elevators at Tulelake, in announcing opening of the feed yards, said members of the company feel confident the business will benefit the entire Klamath Basin.

"This plant is ideally situated," he said, "to handle cattle consigned from California, Nevada and Eastern Oregon. Direct rail-road transportation to retail outlets in Seattle, Portland and San Francisco is available near the yards."

"We will depend heavily on locally grown grain and hay and much of this year's barley and alfalfa hay crops will be turned here into beef," Kandra said.

Enlarging upon the economic benefit to the Basin, Kandra said it is not too early to envision possibility of a meat processing plant here. An annual production of 15,000 head of marketable animals would be necessary to maintain such a plant. Present capacity of the Ore-Cal operation is 5,000 head in the yards. Twenty two acres are under fence. Another 2,000 head can be accommodated later.

The feeding plant will operate on a rotated basis as feeder cattle reach prime condition and are ready to be moved to market. Cattle, on arrival at the yards, will go on bulk feed (hay) for two days to condition them for heavier, more concentrated feed and to prevent bloat. A starter ration will be continued for 10 days, followed by rations No. 2 and No. 3 and the finishing ration as grain, concentrates and molasses consumption is stepped up for 30 days to complete the 120-day feeding cycle.

The company will act as liaison agent between cattle owners and cattle buyers and will use four or five men full time for the bunk feeding operations.

The company will produce its own rations in the adjacent former Malin Grain and Feed Com-

pany which the Ore-Cal Company has also purchased. The ration will contain rolled barley, ground alfalfa hay, concentrates and molasses which will be shipped in via tank cars. Mill capacity is 10 tons of feed per hour.

All corrals have been replaced, heavy iron gates installed, feed bunks are new and a drainage system in the yards will reduce mud during the wet seasons.

The company has contracted with the Lovness Lumber Mill at Malin for shavings to provide bedding and reduce moisture. A continuing corral cleaning program will keep manure localized. The sale of manure after operations are well advanced, will add considerably to profits expected by the company.

An innovation will be the use of beam scales on feed trucks. Each customer's feed will be weighed at feeding time, complete monthly records will be kept and reports made to cattle owners. All arriving cattle will be dipped and vaccinated for various diseases. A hospital section for sick animals will be provided.

Dr. W. V. Ramsmeier, Los Angeles, consultant nutritionist for the Carnation-Albers Company,

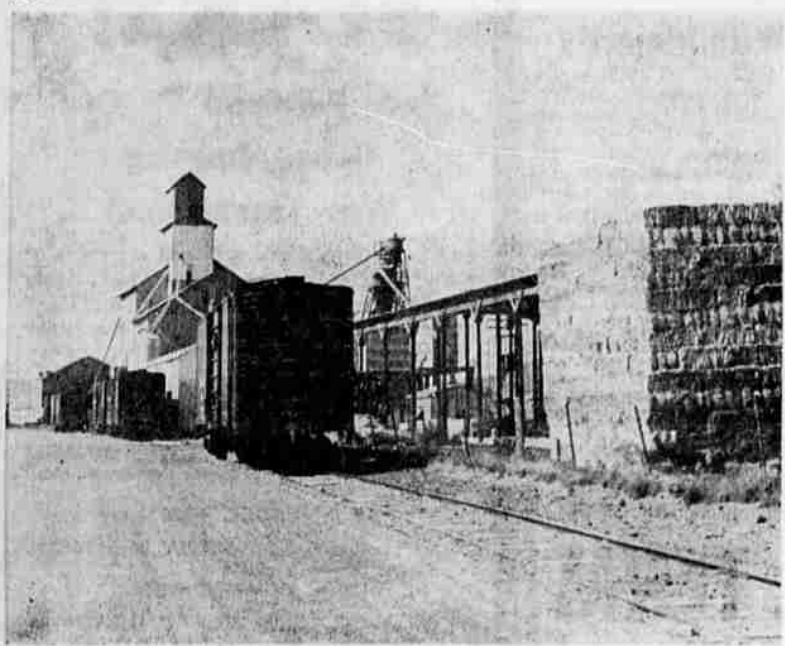
will be available. Branding will be at the discretion of the consignees.

Manager Jack MacAffrey comes highly recommended from his previous experience as assistant superintendent with the Carnation-Albers feed operations at Redmond and one and a half years with the Hudspeth Land and Livestock Company, in charge of show and breeding cattle.

Individuals connected with the new enterprise, largest commercial feeding firm now in Southern Oregon and Northern California, visited many other such operations on the West Coast before start of the business in Malin. The company has 116 additional acres not yet under fence for expansion.

The yards were visited Sunday following a picnic in the Malin Park by members of the Klamath County Cattlemen's Association and guests.

A study by University of Southern California scientists found that tattooed men showed a higher rate of divorces plus a greater number of courts martial than did the non-tattooed men.



**WEATHER BULLETIN!**  
**COMING-A WINTER HEAT WAVE IN YOUR HOME!**

**the exciting new SIEGLER GAS HOME HEATER**

**PUSH BUTTON CONTROLS!**  
Just push a button and this Siegler obeys your command—automatically!

**now gives you amazing SWEEPING SUPER HEAT FLOOR HEAT**

The golden louvers in the floor heat outlet are motor driven to rotate back and forth—sweeping the heat over the floor. All new in performance, styling and exciting colors, this new SIEGLER gives you a new dimension in heating comfort. See it soon!

**KLAMATH GAS**  
205 Riverside IN. TULELAKE — BORGAL GAS — Phone 667-2697 Ph. TU 2-2541

**There's nothing as good as DU PONT TRYSBEN® 200 WEED KILLER TO CONTROL MORNING GLORY Russian Knapweed CANADA THISTLE LEAFY SPURGE**

See one of these dealers for your supply

ALBERS FEED and FARM SUPPLY South 6th, Klamath Falls	R. E. BANNING FARM SUPPLY Fort Jones, Calif.
J. W. KERNS South 6th, Klamath Falls	YREKA SEED and GRAIN Yreka, Calif.
ALBERS FEED and FARM SUPPLY Lakeview, Ore.	SISKIYOU RANCH SUPPLY Mentogue, Calif.
MODOC COUNTY CO-OP Alturas, Calif.	THE SPRAY CENTER Tulelake, Calif.
ARMOR'S SEED & GRAIN Alturas, Calif.	

**OREGON AG CHEMICALS**  
TULELAKE 667-2229

**SERVICE**

**HARVEST FESTIVAL SELL-A-BRATION**

**FALL SUPER VALUES** Supplying National Brand Merchandise to You — Direct from Factories. YOU SAVE 20% to 60%.

**POLYETHYLENE HAYSTACK COVERS**

NO.—Width—Length	Reg.	Fleet
4-16-1—16'—100'	30.60	15.00
4-20-1—20'—100'	38.96	18.75
4-20-5—20'—50'	19.12	9.37

**BLACK — .004 MIL**

NO.—Width—Length	Reg.	Fleet
6-16-1—16'—100'	45.96	21.68
6-20-1—20'—100'	57.44	28.16
6-20-5—20'—50'	28.72	14.08

**Caldwell Haybale Elevators**

	Reg.	FLEET
16' Complete With Chain	99.10	\$ 69.95
24' Complete With Chain	124.38	88.75
32' Complete With Chain	149.50	107.55

**RIFLE SHELLS**

	Reg.	FLEET
270	4.75	3.80
30-30	3.75	2.98
30-06	4.75	3.80
308	4.75	3.80
300 Savage	4.60	3.70
243	4.30	3.40

**NATIONAL ADVERTISED BRANDS SPARK PLUGS**

Special Sale Price Good Till Sept. 30 **59c ea**

**FREE COFFEE ALL THE TIME**

**JUST ARRIVED**  
Large shipment, all sizes for cars and trucks, COUNTRY-SIDE MUD & SNOW TIRES. LOWEST PRICES IN SOUTHERN OREGON.

**RANCH WHOLESALE SUPPLY**  
RANCH, FARM & FARM SUPPLIES  
Buy At The "Y" — MERRILL-LAKEVIEW JUNCTION