



Nations Of World: Tiny Nation Of Israel In Readiness To Face Irate Middle East Neighbors

JERUSALEM (UPI)—Israel is so small that usually only the largest scale maps print its name within its own borders. It has an area of only 8,000 square miles, about the size of the state of New Jersey.

There are 2,250 million people in Israel of whom some 2 million are Jews, representing about one-sixth of all the Jews in the world. The rest of the population consists of 150,000 Moslem Arabs, 50,000 Christian Arabs and a separate Arabic-speaking religious sect, the Druses, whose 20,000 adherents are concentrated in a few villages in the north.

The state of Israel was created officially by a United Nations assembly resolution in 1947 which assigned it about one-fifth of the former mandated territory of Palestine. The remainder belongs to the Hashemite kingdom of Jordan.

Soon after its creation Israel found itself in conflict with its Arab neighbors. This state of war technically exists even today. Thus Israel has the Mediterranean at its back and facing it along its entire 591 miles of land border are its Arab opponents—Lebanon and Syria on the north, Jordan on the east and Egypt on the south.

As a result Israel is always in a state of readiness. It can mo-

bilize the nation within 48 hours and it has one of the few armies in the world in which women actually train for duties in the combat zone. This necessity to be on guard has its repercussions in agriculture where some of the collective farms or "kibbutzim" have their own defense forces.

Workers in the fields may have their weapons within easy reach. Israel is a tiny country but it does not lack variety. It is only four hours by automobile from the green, fertile Sharon coastal plain between the two largest cities, Tel Aviv and Haifa, to the desolate and barren wilderness of the Dead Sea, the lowest point on the surface of the earth (1,290 feet below sea-level).

There are only two seasons a year in Israel—winter and summer. All the rain falls in the winter, between October and April. The north is wetter than the south (40 inches of rain in upper Galilee, down to one inch

in a year at Eilat on the Red Sea). Most of Israel's Jews are immigrants. They have come from more than 50 different countries but they are divided roughly into two ethnic categories, Ashkenazim and Sephardim.

The Sephardim are descendants of those Jews who settled in Spain and Portugal after the destruction of the second temple in 70 A.D. The Spanish Inquisition in 1492 dispersed most of them to North Africa, Southeast Europe and Asia Minor.

The Ashkenazim are descended from the exiles who settled in Northern and Eastern Europe. The term includes Jews living in north and South America, South Africa and Western Europe.

Many of the immigrants have been transformed into farmers. But the great majority of them have been absorbed into the country's growing industrial economy. In 1961, 77 per cent of the popula-

tion lived in cities and towns and the trend is growing. Israel is second only to Great Britain as the most urbanized nation in the world.

Israel has a high standard of living as these things are rated in the Middle East. Three out of five homes have gas ranges, nine out of ten a radio and every other family owns a refrigerator.

Exports cover only one-third of Israel's national consumption and expenditures. The balance is made up of gifts and loans from Jews abroad, German reparations and foreign capital investments.

Her main exports are citrus fruits, cement, diamonds, eggs, plywood, phosphates, tires, wine, medicinal preparations, household utensils and cotton goods. An important hidden export is her growing tourist trade. Israel's chief customers are Britain, which is the leading purchaser of her citrus fruit, western Europe, the Scandinavian countries and the United States.

Israel is a parliamentary republic with a one-house, 120-man legislature. Just about any adult can vote, even convicts and inmates of mental hospitals. Because of proportional representation no party has ever enjoyed an absolute majority. Premier Ben Gurion's Mapai Labor party, the largest single party, has ruled a succession of coalition governments since 1948.



NATION OF ISRAEL — Aerial photo, top, shows the crowded, but well-planned modern city of Tel Aviv, in the nation of Israel, and lower photo shows the Kibbutz at Gan Shmuel. — UPI Telephoto

Bath Takes Status Spot

LANSING, Mich. (UPI) — The swimming pool is giving way to the bedecked bathroom as the nation's latest status symbol.

For those who have the money and the inclination, designers have come up with spacious showers with sliding glass doors, delicately tinted tiles and an endless vista of glass and brass.

Some of the refurbished bathrooms have expanded the usual narrow, neck-high window to a broad sweep of glass looking out into a yard or terrace—a feature greatly in keeping with the trend toward more outdoor living.

Gone are the white porcelain washbowl and tubs. In their stead are ones of misty lilac, dusty rose and sea spray green.

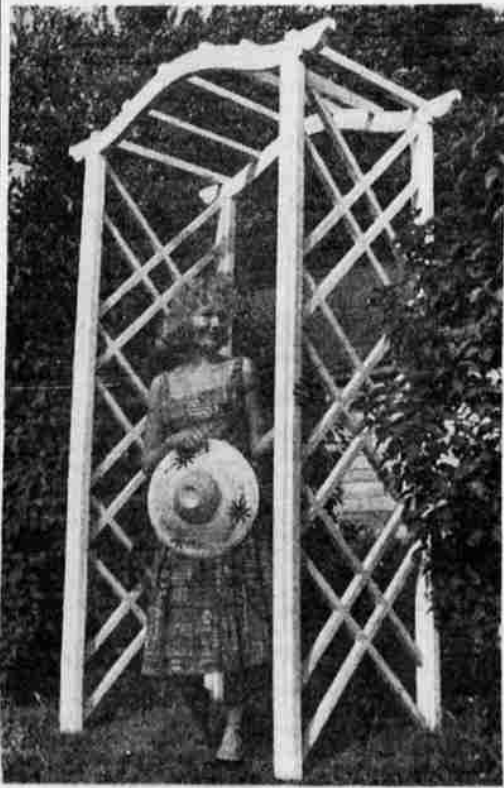
The shape of the washbowl has not escaped change either. Manufacturers are turning them out in circles, ovals, rectangles and squares.

In the more elegant bathrooms, the inside of the washbowl is stenciled with a gold design.

Other features include built-in soap ledges tucked underneath the inner rim of the washbowl. The ledges are just above the water line. The soap remains in this "dry dock" even when the bowl is filled.

Not so long ago, most of the elaborate fixtures seen in new homes had to be custom made. But manufacturers of bathroom equipment now are offering them as part of their regular stock.

At least one company is turning out a sunken bathtub which fits between joints beneath the floor line without protruding through the ceiling of the room below. The exposed sides are about six inches above the floor surface.



Easy-To-Build Trellis Proves Very Popular

Since there's usually one or more gardeners in every family, this handsome, easy-to-build trellis is exceptionally popular. It can be used to frame an outside door, as an entry to a fenced area, or as a free standing arbor. Wherever placed, it provides a perfect base for climbing roses, wisteria, honeysuckle or whatever type of plant you prefer. Directions contained in the pattern offered below suggest building a trellis of sufficient height to accommodate roses and other climbers. It is a simple matter to cut height down should you prefer to use the trellis as a free standing arbor.

Building this project isn't difficult nor does one need any special skill, tools, or materials other than those specified on the pattern. These are readily available in lumber yards everywhere.

The pattern simplifies construction by showing exactly where and when each part is fastened together, size of hole to drill, bolt to use.

Economists of the oil industry predicts that more than 11 million barrels of crude oil will be processed in the oil refineries of the United States by 1965, double the 1950 rate.

Send 50 cents in coin, check or money order for Garden Trellis Pattern No. 304 to P.O. Box 215, Briarcliff Manor, New York. Send 50 cents additional for new catalog illustrating 300 other built-it-yourself pattern projects and home improvement books. Add 25 cents per pattern if you want special handling.

Capitol Shrines Guidebook Out

WASHINGTON (UPI) — "The average visitor to Washington may think of this city only in terms of its public buildings. But, if so, he will miss much that is here, for the nation's capital is also a great religious center."

Those are the introductory words of a newly published "Guide to Religious Shrines in the Nation's Capital" (Capital Church Publishers, 75 cents).

The handsomely illustrated paperback was written by Glen D. Everett, veteran Washington correspondent of Religious News Service. Complete with maps and suggested routes, it takes the reader on a tour of some of the greatest religious edifices of the modern world, such as Washington Cathedral and the National Shrine of the Immaculate Conception, as well as many lesser-known points of religious interest, such as a functioning Franciscan monastery, a beautiful Moslem mosque which faces Mecca, the prayer room of the U.S. Capitol, and the churches in which George Washington and Abraham Lincoln worshipped.

Proper Painting Needs Preparation

By MR. FIX
Newspaper Enterprise Assn.

It's a truism that any paint job is only as good as the preparation for it. But while most people accept the theory, they follow the practice of simply setting up ladders and painting away the first pleasant day that comes along.

Since ideal painting weather may not always occur when the homeowner has the time to do the job, it's understandable that many preliminary steps are skipped.

Try to get the preparation done well ahead of time. Unlike painting, preparation can be done an hour or so at a time over a long period.

Loose, peeling or blistered paint should be removed. Scrape or sand off the old finish. A putty knife or scraper will remove loose paint. Watch for accumulated dirt and remove this as well. A wire brush will also come in handy.

Feather Edges
Defective paint that is not loose enough for a scraper can be removed with rough sandpaper. Feather edges wherever you remove paint. The surface at the edge

should be smooth or a ridge which doesn't dry out as putty show through the new finish.

In extremely difficult cases, especially where large areas are involved, the paint is burned off. This is done with a blow torch or with a special device that combines the features of an electric iron and a scraper.

Since the danger of fire is great for the inexperienced person, better leave burning to the experts.

Let Harden
Look for cracks and nail holes. Fill them with wood putty and sand smooth. They should have plenty of time to harden before painting.

Check windows for loose or missing putty. Scrape out thoroughly, then brush on a coat of linseed oil over the exposed wood. Apply fresh putty or glazing compound.

Check around window sash, doors and other joints to see if new caulking is needed. Again, scrape out broken caulking before applying fresh caulking.



Wildlife Experts Take Actual Birdlife Census

(Continued from Page 1)

150,000 snow geese (Chen hyperborea hyperborea) 5,000 Canada geese (Branta canadensis canadensis), and as many as 400,000 ducks of other species.

Aside from being the harbinger for more than the 3½ million birds which pass through the Basin annually, the wildlife service maintains a "hospital" and convalescent pens for an average of 8,000 to 10,000 birds stricken with botulism in the Basin each year.

Before the advent of antibiotics the dreaded disease, which attacks the nervous system of birds, took an annual toll of up to 25,000 victims.

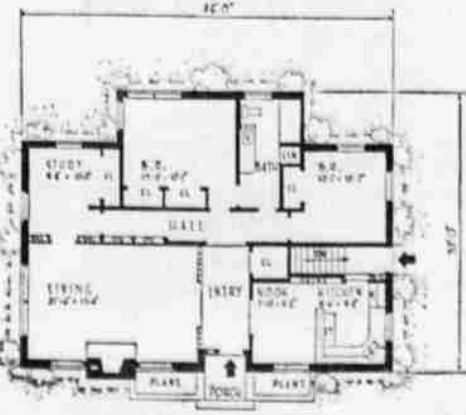
Botulism has been traced to a bacteria unique to highly alkaline soils which thrives in waters of low oxygen and high temperatures. It kills waterfowl by destroying their nervous system. In the early days, the disease was commonly known as "limber neck" because in advanced cases ducks, unable to control their neck muscles, would drop their heads into the water upon which they were floating and eventually drown.

Since the inception of antibiotics there has been an amazing 92 per cent recovery rate of waterfowl stricken by botulism, but the project of injecting 5 cc's of penicillin into nearly 10,000 birds keeps four employees at the local bureau working almost incessantly throughout the summer. During the past five years an average of 7,000 birds have been collected annually from Lower Klamath Lake and transferred to an open shed, near the bureau's local offices, where they are placed in "cradles" to await injections of antibiotics. Following the injections, the ducks are placed in an open pen and remain there until they are able to fly away.

Family Homes



DESIGN 334
House 1,337 Sq. Ft.
25,888 Cu. Ft.



Entry Hall Catches Eye In Well Planned Home

From the moment you enter the slate-floored entry hall with its deep closet, this home catches your interest!

Trellis and wood arch separate entry hall from extra size living room featuring ledge rock fireplace with a full six foot mirror above the mantel. Large windows at each side of the fireplace plus picture window at the side will make this a very bright room.

Shutter type double door opens into study. Here, a book built-in at each side of the shutter doors plus double closet with sliding doors make conversion into third bedroom an easy matter.

Master bedroom has a Mr. & Mrs. closet each with sliding doors and access to full bath. Second bedroom has excellent wardrobe closet with sliding doors and cross ventilation for comfort.

Kitchen and dining nook are planned to accommodate family requirements. An especially attractive and useful idea is the position of the range — it is placed against a half wall dividing kitchen from nook. Above

the range are storage cabinets with pass-through below.

These cabinets can also be opened from dining nook, while below the pass-through, the wall facing dining nook is paneled in wood. Corner sink, a double size open shelf china cabinet and door to grade entrance and basement stairs complete the layout of this prize winning kitchen.

Sliding door between center hall and entry plus well designed storage cabinet built-in hall utilizes this area to good advantage.

Basement has fruit room under stairs, also a lavatory which will be especially convenient as recreation room facilities are provided by proper placement of heating and laundry equipment.

Brick veneer and ledge rock in exterior construction materials have been used in this model. This plan conforms to general FHA, VA and Building Code requirements. You can obtain building plans with material list and specifications. See order coupon.

HOME WORKSHOP

CLIMBING "TREE" FOR THE PLAY YARD

CEMENT RUBBER STOOD CAPS TO ENDS
ANCHOR POLES WITH 2 1/2" SCREWS
7' LENGTH OF 4x4, TREAT END WITH PRESERVATIVE, SET 2' IN GROUND IN CONCRETE
30" LENGTHS OF 1 1/2" HARDWOOD CLOTHES POLE SPACED 12" APART
MARK DRILL LOCATIONS CAREFULLY, DRILL HALF WAY THROUGH, THEN DRILL FROM OTHER SIDE

CLIP AND SAVE

WALLPAPER ALL NEW PATTERNS

OPEN A CHARGE ACCOUNT

Up to 5 Months to Pay. No Carrying Charges!

SHERWIN-WILLIAMS

1229 E. Main TU 4-7704

there's nothing like a Leica the incomparable LEICA M-3 the ultimate in 35mm

Leica's at Leo's start at \$188

see them!

LEO'S CAMERA SHOP

836 Main Ph. 2-3331

Be modern with MOEN

FOR EVERY KITCHEN! One handle saves time and water

Friesen-Welman Co. 1715 Main St. Phone TU 4-7043

CARPETING MOST-CLEANED

Do it yourself OR we do it for you

RENT THE MOST Electric Brush

Ph. 4-3111 or 2-2531 for Complete Information

CASCADE LAUNDRY & CLEANERS

Now in progress! Our 61st ANNIVERSARY SALE!

SAVINGS IN EVERY DEPARTMENT

Use Your Charge Account

Miller's

512 Main Use Our Big Parking Lot at 5th & Klamath