


Helping Hands Meet In Malin

MALIN—Mrs. George Smalley entertained members of the Helping Hand Society Wednesday, Feb. 20, with a dinner for 20 members and one guest, Mrs. Albert Laqueu.

Mrs. Harold Kniskern, president, was in charge of the business meeting. Mrs. Halbert Wilson reported the Malin Park will be installed and pay the upkeep of a telephone in the Community Hall. A baked food sale was discussed. Date will be decided by the Ways and Means Committee. Meeting was adjourned to meet with Mrs. Frances Street in the month of March.



ONCE-A-YEAR SAVINGS EVENT

Belle-Sharmer

LEGSIZE STOCKINGS

Ends Saturday March 9th

Introduce yourself to the beauty, fashion and LEGSIZE fit of Belle-Sharmer stockings, during this once-a-year savings event. Your favorite Seamless and Full Fashion styles are available at substantial savings.



BREV (purple stripe) for short slender legs, sizes 8 to 10½

MODITE (green stripe) for average legs, sizes 8½ to 11½

DUCHESS (red stripe) for long ample legs, sizes 9½ to 12

FAMOUS SYMBOL OF FIT

Regular \$1.35 styles Now **\$1.17** pair

Regular \$1.50 styles Now **\$1.28** pair

Regular \$1.65 styles Now **\$1.41** pair

Regular \$1.95 styles Now **\$1.66** pair

Support Hose, Reg. 4.95, now **3.95**

Use Your Charge Account or Lay Away



512 Main — Free Parking 5th & Klamath



NEW ARTIST — Mrs. W. P. Myers of 879 Lakeshore Drive, decided she wanted to learn to paint not too many months ago. She tried oils, first, of King Ludwig's castle in the Bavarian Alps, the print she is holding, and others of Oregon scenes. Then she decided to try her hand at water colors, took a course in painting at Klamath Union High School, and will have a number of her pictures put on display. She is 87.

Stella Myers Exhibits Art

A one-woman exhibit of oil and water color paintings completed by Mrs. W. P. Myers, was shown at her home Feb. 23 when she invited a number of friends to view her work and colored slides of a trip she took last year to Europe.

Mrs. Myers, now 87, began to paint in oils following her return from a trip to Europe, arranged for her by her son Theodore Myers, now a resident engineer, living in Ansbach, Germany. He is in charge of construction of a large U.S. Army depot at Katterbach for the armed forces.

Her first work of European scenes was in oil, copies of castles and landscapes she had seen on her trip abroad. Recently she decided she would paint in water colors, signed up for a class at Klamath Union High School under Caroline Hanson, art instructor, and completed her studies in nine weeks.

Celebrating her accomplishment, Mrs. Myers invited in several friends and received highly

complimentary comments on her work, some of it to be placed on exhibit by her instructor. While abroad she visited Rome and The Vatican, St. Peters, Paris, Nurnberg, Bavaria, Germany, the Bavarian Alps, Tyrol and many other interesting points.

The hostess narrated for the slides of Europe, shown by Mrs. Isabell Brixner.

Others present for the party and refreshments included Mrs. Olive B. Cornett, Caroline Hanson, Theresa Myers, Dr. and Mrs. Frank Johnson, Mr. and Mrs. Cleo Dunlap, Mr. and Mrs. Cecil Gonts, and Mr. and Mrs. Norman Wilson.

The Hazbins

The Hazbins Club met Feb. 25 at the home of Sadie Wallace, Pinochle was in play with high score held by Fannie May Thompson, second by Stella Persell and low, Sarah Kirby. Pinochle prize was won by Stella Persell and a special prize went to Agnes Vasick.

Refreshments were served later by the hostess, Sarah Kirby will be hostess to the club in March.

You can make a most delicious gravy simply by adding heavy cream to the pan drippings from roast chicken or turkey.

College News

Fred Olson is one of the singers making up the Lewis and Clark College Choir which will appear in Klamath Falls on March 21 at the First Presbyterian Church.

Sharon Wise will receive her nurse's cap at the Good Samaritan Hospital School of Nursing Capping Ceremony on Friday, March 15. The cap is given at the end of the first six months of the student's schooling, signifying successful completion of the pre-clinical period.

Tommye Laney was among a group of Linfield College home economics students who recently attended a meeting of the Portland Home Economists in Business at Jantzen Mills in Portland.

Bruce Lattin, member of the Forensics Club of Southern Oregon College, was one of the SOC representatives at Tournament of Champions held at Linfield College, at which 700 speakers represented 11 western states.

Cora Enman, senior at Whitman College, recently presented a vocal concert at Pendleton.

Mavis Kliever, Lakeview, was one of 196 freshmen women at the University of Oregon invited to attend the annual Valentine's Day Smarty Party sponsored by Mortar Board, senior women's scholastic honorary. Freshmen coeds who earn grade point averages of 3 or higher are invited to the affair. Mavis is an English major and a member of Delta Gamma sorority.



TODAY, SUNDAY, at the HOME SHOW, The Vacuum Cleaner and Necchi - Elna Sewing Machine Center will play host to Mrs. Alta Lou Taylor, nationally known NECCHI-ELNA Home Economist who has been connected with NECCHI-ELNA for the past eleven years, and will demonstrate NECCHI and ELNA sewing machines and answer questions about sewing in general. Mrs. Taylor majored in apparel at UCLA, was a fashion-designer and customer and has traveled extensively throughout the country. She has been instrumental in setting up sewing schools in a great number of NECCHI-ELNA sewing circles.

VACUUM CLEANER & NECCHI - ELNA SEWING MACHINE CENTER
121 South 6th • See You At The Home Show

GOOD, OLD SUDS well as safe, to give furniture case pieces a good washing twice up is not necessarily the best or a year. Use soap or detergent most attractive thing to happen suds, wring out cloth or sponge to good wood. Authorities on an-so you will not soak the wood. tiques point out that it is best, as Wipe dry.


Smartaire.

FASHION IS A LOOK..

NOT A PRICE... **10⁹⁹**

Smartaire spells luxury with no hint of the tiny price!

Choose from a large collection of high or mid heel pumps with the up-to-date styling that is so unmistakably Smartaire!



Picture: ROMA Mid illusion heel White calf Bone calf

Bags to Match, of Course!

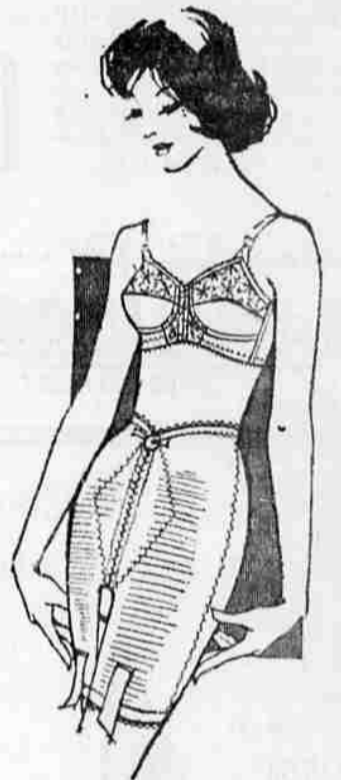
Bogatay's SHOES
617 Main

Announcing...

Miller's Slimwear Department is proud to Announce the Arrival of a brand new line ...

Smoothie

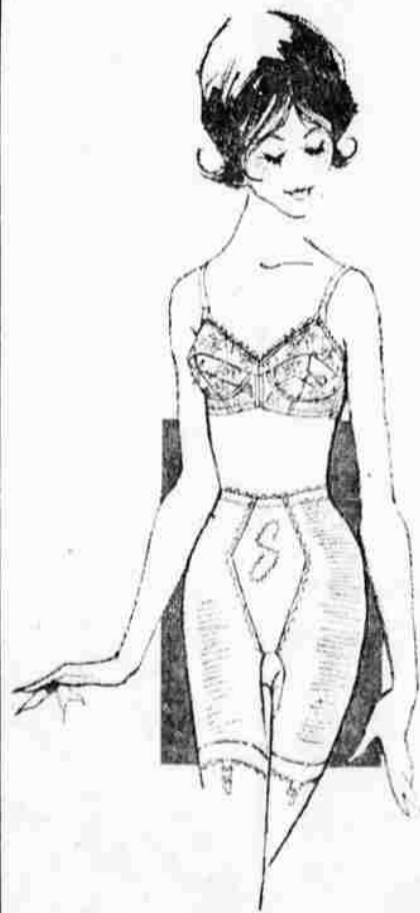
Smoothie shapes your figure so beautifully... gives such flattering lines... offers luxurious all day comfort. See this line soon!



Smoothie

Smooth, pretty lines are yours in this comfortable, long-leg panty. Control is provided by power net of Lycra Spandex and satin elastic panels front and back.

White, S, M, L. **6.95**



"Lycra" is DuPont's trademark for its Spandex fibre.

Smoothie "FINESSE"

This light and lovely long-leg panty creates the all-important long, smooth hip and leg line. So sheer, yet so effectively controlling in power net made with DuPont's new and wondrous elastic fiber, Lycra. Self-reinforced in front, back and sides. Removable inner shield.

White, S, M, L and XL **12.50**

Smoothie "CONTROLEUR"

The famous Controleur design of this Smoothie foundation creates flattering lines and all-day comfort for the full figure. Made with delicately patterned Jacquard batiste panels and leno elastic, it has front zipper, side reinforcements, built-up top.

White, 40 to 44, 15" and 16", C, D Cup **17.50**

Cups: Nylon Panels: cotton, rayon elastic: rayon, rubber.



USE YOUR CHARGE ACCOUNT OR LAY AWAY

Slimwear — Second Floor

512 MAIN — FREE CUSTOMER PARKING 5th and KLAMATH

Ship'n Shore'

Spring and Easter blouses

so sparkling to wear... so easy to care!



Batiste blouse of embroidered elegance. Utter luxury to own! Buttoned in back, exquisitely detailed, beautiful on you! Fresh white all cotton, so easy-care. 30 to 38. **3.98**

Flower print shirt with an on-off bow! When the bow slips off, it's a neckbander! Carefree 65% Dacron polyester, 35% cotton. In lovely watercolor tints. 28 to 38. **4.98**

Embroidered blouse in full flower! Colorful tulips, box tucking. Button-back. What suit could ask for more? 65% Dacron polyester and 35% cotton. easy-care. White, pastels. 30 to 40. **3.98**

Use Your Charge Account or Lay Away



512 Main — Free Customer Parking, 5th & Klamath