



**TO BE WELL GROOMED** — With the swing to the smooth-textured unshiny face, more care in selection and application of make-up is needed. The matte look, left, is achieved through use of a combined medicated foundation and powder. The model, center, works for a more flattering lipline to highlight the total matte ef-

fect. She used a petite lipstick that goes with an attractive, refillable compact. To thicken and lengthen her lashes, this girl, right, works with a swirl brush to apply tiny nonallergenic fibers to her lashes between two applications of mascara.

By ALICIA HART  
Newspaper Enterprise Assn.

How often we admire the woman who is impeccably dressed and wonder what her secret is. If you were to ask, she probably would say she follows the simple rule of underdressing, especially when it comes to jewelry and her accessories. The key to escape being "overjeweled" is to take one piece off before going out.

However, the reverse is true when it comes to makeup. Add a finishing touch before you leave the house.

This rule is double important with the swing to the flawless, porcelain make-up that represents the matte look. The matte is just that. Without lipstick or eye make-up, your facial appearance is extremely subdued, pale and almost flat-looking. But, to attain the look of models which we all admire so much, the matte is the perfect answer. It is easy to create your own matte effect, since there is a foundation-and-powder combination that serves as the base.

To highlight the soft, subdued look, you will want to take more care with your lipstick and eye make-up. This is where the "addition" rule applies.

Once you feel you have completed your make-up, take another look. The shade of your eye shadow may now be lost in the total effect. If it is, heighten the color with light strokes of additional eye shadow—or use another color.

If your lipstick also appears too pale to highlight the matte effect, darken it a bit.

As a final touch, check your eyelashes for traces of powder which will give them a dulled look. If they are powdery, a quick application of extra mascara will do the trick.

For fun and for special evenings, there is a new non-all-

genic eyelash cosmetic from Switzerland that makes your lashes appear thicker, and luxuriously natural. A swirl brush rolls on tiny fibers between two applications of mascara. The fibers are applied while the first touch of mascara is wet. The second coat acts as a sealer.

Now, take that final look before stepping out for the day or evening. You will be more confident when you see that you have created an aura of perfection.

**Printed Pattern**



9043  
SIZES  
12-20  
by Marian Martin  
DAY-DINNER OUTFIT

Exceptionally attractive for day, dinner or travel—this two-piece dress with a newsworthy ring collar. Choose cotton, linen, shantung.

Printed Pattern 9043: Misses' Sizes 12, 14, 16, 18, 20. Size 16 requires 4 1/2 yards 35-inch fabric.

Fifty cents in coins for this pattern—add 10 cents for each pattern for first-class mail. Send to Marian Martin, care of Herald and News, Pattern Dept., 232 West 18th St., New York 11, N.Y. Print plainly name, address with zone, size and style number.

Free offer! Coupon in Spring Pattern Catalog for one pattern free—any one you choose from 300 design ideas. Send 50 cents now for catalog.

**THE NATURAL LOOK**

A noted team of interior decorators points out that plants look more natural and add more true decorating sophistication to a room when displayed to a room when displayed in their uncovered pots. It is "not correct" these decorators say, "to hide the clay pot in cute holders."

Bobwhite quail prefer fairly open, cultivated or pasture land with patches of brush for shelter.

**SCIENTIFICALLY SPEAKING ABOUT... DIAMONDS**

Any diamond must be GRADED in order to determine the COLOR, PERFECTION, PURITY, CUTTING and PROPORTIONING and CARAT WEIGHT. In order to determine its value in DOLLARS, the JEWELER MUST HAVE THE PROPER SCIENTIFIC INSTRUMENTS. We have a fully equipped DIAMOND LABORATORY to EXPLAIN and SHOW you these differences in quality. Our policy is simple: BE SURE THAT OUR CUSTOMERS ARE WELL INFORMED ABOUT DIAMONDS, AND THAT HE WILL NEVER HAVE SOMEONE ON THE OUTSIDE TELL HIM SOMETHING ABOUT HIS DIAMOND THAT HE SHOULD HAVE KNOWN FROM US... BEFORE HE PURCHASED THE DIAMOND.

**J. C. RENIE JEWELERS**  
A Trusted Jeweler Is Your Best Adviser  
1021 Main TU 4-4606



**POLLY'S POINTERS**

Serviceable Hose Rack

POLLY CRAMER  
Newspaper Enterprise Assn.

**DEAR POLLY**—To store garden hose, use two pairs of rubber or metal horseshoes. Fasten one pair on a wall with open ends up, the other pair lower on the wall, with open ends down. This makes a fine hose storage rack.

Have an old spatula handy just for turning hamburgers on outdoor grill. Mark where rods on the grill top hit the spatula. Note the spatula with a rattail file 1/2 inches deep at these marks. Hamburgers can be turned or picked up without leaving meat between the rods on the grill.

**MRS. G. M.**  
**DEAR POLLY**—For little girls' birthday parties, I buy a child's handbag for about \$1. With the second dollar to be spent, my 6-year-old daughter and I roam the 5 and 10 cent store to find things to go in the purse. For example, we might get a 10 cent comb, a 5 cent pack of facial tissues,

you have to do is to pull the stitches out of the tuck and the original hem is already in place.

**MRS. R.L.W.**  
**GIRLS**—If the hem is not deep enough to allow for a tuck, it often can be left as is and just doubled under so it is easily let down.

**POLLY**  
**DEAR POLLY**—I bought a portable ironing board so I could take it into the living room and watch television while I iron. In place of the built-in ironing board in the kitchen, I put up shelves and use the space for a spice cabinet. If the door to an ironing board niche is removed, this will make a good spot for displaying all sorts of attractive things that would mainly be hidden away on cupboard shelves.



a 10 cent hanky, a pack of chewing gum and a little mirror. This is fun for the little girl who gives the gift as well as for the recipient.

An inexpensive gift for toddlers learning how to button their clothes can be made from scraps of felt and odd buttons. Using the same idea as that used to make jointed paper dolls, cut the body, legs, head and so on of the animal from felt. Sew buttons to one piece and have a buttonhole, to fit, on the part to be attached. I found these good for Brownies and Girl Scouts to make.

**GERALDINE**  
**DEAR POLLY**—My hat veils always looked wrinkled until I discovered this way to store my hats. I use a quart preserve jar and wrap tissue paper or a plastic dry cleaning bag round and round the top, shaping it to the size of the veil. Then I set the hat on top of the jar and pull the veil neatly down over the paper wrapping. The next time I wear the hat the veil is neat and un wrinkled.

**MRS. JACK J.B.**  
**DEAR POLLY**—When you buy a child's dress that needs to be shortened a bit, take a tuck in the under side of the hem. Then when the child grows taller all

**SPANISH ACCENT**  
The turban, the sailor and the cloche appear again for spring. And taking its place with them is a smart interpretation of the Spanish cordovan hat, handsome in black licence straw.

**ENGAGED** — Mr. and Mrs. G. G. Riggs announce the engagement of their daughter, Donna, to Stephen Stancliff, son of Mr. and Mrs. R. O. Stancliff. Both families reside in New Pine Creek. The future bride will be graduated this June from Lakeview High School. Her fiancé, a graduate of the same school, is stationed at Fort Bliss, Texas. No date has been set for the wedding.

**BRIDAL PAIR** — Mr. and Mrs. Nate Feasel were married Feb. 9 in Kingdom Hall of Jehovah's Witnesses with reception following. Mrs. Feasel is the former Judy Lewis. — Photo by Fred N. Pearce

**Church Rites Unite Couple**

At Kingdom Hall of Jehovah's Witnesses on Feb. 9, Judy Lewis and Nate Feasel were united in marriage in a ceremony officiated by Chester Truax, pastor. The bride is the daughter of Mr. and Mrs. Fred E. Lewis, this city. She wore for her wedding a light blue suit with corsage of miniature roses and carnations. She was given in marriage by her father. Attending her sister as maid of honor was Joann Lewis. Joan Riskus was the pianist. The bridegroom's parents, Mr. and Mrs. Virgil V. Feasel of Phoenix, Ariz., were present for the ceremony. Melvin Feasel, brother of the bridegroom, was best man. Ush-

**SENIOR CITIZENS MEET**  
MOUNT SHASTA — Wonderland Seniors enjoyed a social gathering Feb. 20 in the armory. Several members from Weed were also present. Winners of games were P. A. Williams, Ruth Light and Estelle Douglas. Margaret Belanger and Laura Phillips presented a skit for further entertainment.

**SPECIAL! SPEED READING CLASSES**  
Improve your reading ability and speed with these special speed reading lessons. The importance of reading is obvious to everyone. Plan to enroll now. Starts Mon. - March 4th 7:30 p.m., Spruce Room Willard Hotel

**Women's Activities** By Helen Bechen



**RECEIVES HONOR** — Larry Wisner, school custodian, was awarded a life membership by Mount Shasta Elementary School PTA at February meeting. He receives his pin and certificate from Mrs. Ralph Brooks, who was honored last year. The life membership is given each year in celebration of Founders Day.—Photo by J. O. McKinney



**OUR SINCERE THANKS**  
To the many people who visited us during our first week of business!

**SANDERS DRIVE IN RESTAURANT**  
E. Main and 6th

**BRING THE FAMILY ENJOY THE FINEST FOODS**  
Open 7 AM till 11 PM. On Fridays and Saturdays, open from 7 AM till 1:30 AM. Featuring courteous service and excellent food. Enjoy your food inside, or if you prefer, we've fast curb service available. Here's another plus—orders to go, from sandwiches to dinners, in insulated boxes so they reach home piping hot. Just call or drop in. There's plenty of parking. Sander's Drive In Restaurant E. Main & 6th Ph. TU 2-6142

**SHOP TONIGHT TILL 9 PM**



**SEARS GIGANTIC \$100,000 STOCK REMOVAL SALE CONTINUES**

- Kenmore AUTOMATIC WASHERS Prices Smashed You Save 31.95
- Harmony House DINETTE SETS Prices Smashed You Save 30.95
- Coldspot 15 cu. ft. CHEST FREEZER Prices Smashed You Save 61.95
- Kenmore Zig Zag SEWING MACHINE Prices Smashed You Save 76.95
- Harmony House BEDROOM SUITES Prices Smashed You Save 25.95
- Kenmore 30" ELECTRIC RANGE Prices Smashed You Save 51.95
- Harmony House LIVING ROOM SUITE Prices Smashed You Save 50.95
- Harmony House ROOM SIZE RUGS Prices Smashed You Save Up To 74.40
- Silvertone Portable TELEVISION Prices Smashed You Save 31.95

You Haul and Save Another \$5.00 to \$10.00

**ATTENTION PREFERRED CUSTOMERS!**  
BUY MORE! PAY LESS!  
New CREDIT TERMS make possible reduction of your monthly payment when major purchases are added to your easy payment account. NO MONEY DOWN! NO PAYMENTS TILL MAY! NO NEED TO WAIT — BUY NOW!

Shop at Sears and Save SEARS Satisfaction Guaranteed or Your Money Back

HERALD AND NEWS, Klamath Falls, Ore.



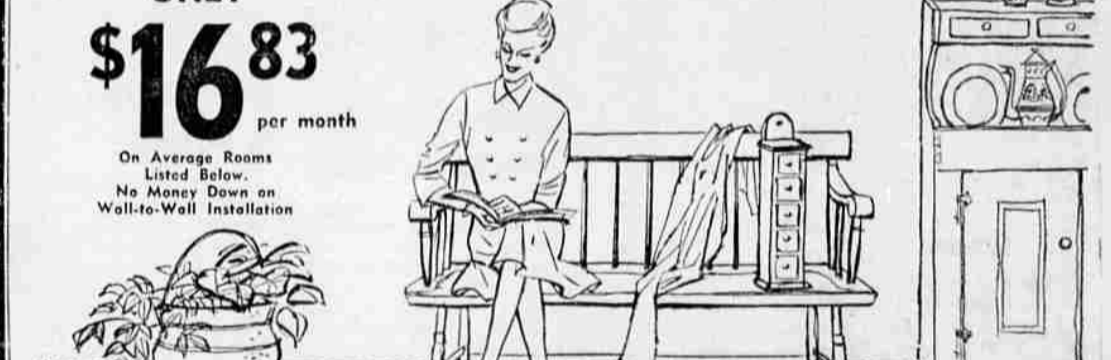
**RECEIVES HONOR** — Larry Wisner, school custodian, was awarded a life membership by Mount Shasta Elementary School PTA at February meeting. He receives his pin and certificate from Mrs. Ralph Brooks, who was honored last year. The life membership is given each year in celebration of Founders Day.—Photo by J. O. McKinney

**Our Sincere Thanks**  
To the many people who visited us during our first week of business!

**SANDERS DRIVE IN RESTAURANT**  
E. Main and 6th

**BRING THE FAMILY ENJOY THE FINEST FOODS**  
Open 7 AM till 11 PM. On Fridays and Saturdays, open from 7 AM till 1:30 AM. Featuring courteous service and excellent food. Enjoy your food inside, or if you prefer, we've fast curb service available. Here's another plus—orders to go, from sandwiches to dinners, in insulated boxes so they reach home piping hot. Just call or drop in. There's plenty of parking. Sander's Drive In Restaurant E. Main & 6th Ph. TU 2-6142

**LUCAS FURNITURE**  
Long Lasting Beauty for Your Home!  
see "SPICEWOOD" carpet by Lees. 10 Multi-Colors



**ONLY \$16.83 per month**  
On Average Rooms Listed Below. No Money Down on Wall-to-Wall Installation

"Spicewood" is a wonderful new carpet by Lees that not only looks good, but retains its beauty for years and years. "Spicewood" is made with 100% Cumuloft\* Continuous Filament Nylon face yarns, resists shedding and fuzzing. Soil and stain resistant. Easy to clean. Resists crushing and matting. Permanently mothproof. The loop pile with a rippled texture is ideal for today's decorating themes and furnishings. And you'll love the many unusual multi-color combinations from which you can choose: Millstone Beige, Hearthlight, Shepherd Grey, Heathcliff, Fenwood Green, Highland Lake, Moorland Gold, and Stonybrae Beige. Don't delay! Stop today and see "Spicewood." \*Reg. T.M. of Chemstrand

**LUCAS FURNITURE**  
195 E. Main Ph. 4-3134

Choose from one of the largest selections in Southern Oregon and Northern California.

Average Three Room Installation

Room	Carpet	Installation	Cost
living room- 12 x 16	Spicewood		only \$449.95
dining room- 9 x 10	Padding		No money down - up to 36 months to pay!
hallway- 3 x 13	Installation		



**CHAIRMAN** — Gertrude Glodski, childcare chairman, recently presented her chapter night program to members of Women of the Moose Chapter 467.

**WOM Attend Chapter Night**

Women of the Moose Chapter 467 met recently at the Moose Home for a chapter night program presented by Gertrude Glodski, childcare chairman.

Mrs. Glodski was assisted by her committee composed of Ila Douglas and Sharon Lane. The chairman introduced her daughter, Mrs. Roberta Harlan, who gave two humorous readings.

Initiated and enrolled in the chapter were Alice Stuts, sponsored by Winona Cramblet and Marilyn Hansen, sponsored by Pauline Risley.

Refreshments were served at the conclusion of the meeting by the childcare committee.

Ask about daily "Business Card" ● SPOT ADS TU 4-8111