

# MARKETS and FINANCE

## Stocks

By United Press International

Allied Chemical	44 1/2
Alum Co Am	46 1/2
American Air Lines	19 1/2
American Can	47
American Motors	22 1/2
American Standard	—
A.T. & T.	122 1/2
American Tobacco	29 1/2
Anacosta Copper	46 1/2
Armco	54 1/2
Santa Fe	26 1/2
Bendix Corp	57
Bethlehem Steel	31 1/2
Boeing Air	38 1/2
Brunswick	18 1/2
Caterpillar Corp	36 1/2
Chrysler Corp	91 1/2
Coca Cola	9 1/2
C.B.S.	49 1/2
Columbia Gas	27 1/2
Continental Can	45
Crown Zellerbach	47 1/2
Cryogenic Steel	19 1/2
Curtis Wright	20 1/2
Dow Chemical	58 1/2
Du Pont	242 1/2
Eastman Kodak	116 1/2
Firestone	25 1/2
Ford	44 1/2
General Electric	78 1/2
General Foods	84
General Motors	63 1/2
General Portland Cement	18 1/2
Georgia Pacific	49 1/2
Greyhound	36 1/2
Gulf Oil	42 1/2
Homestake	50
Idaho Power	34 1/2
I.B.M.	417 1/2
Int Paper	29 1/2
Johns Manville	46 1/2
Kennecott Copper	73 1/2
Lockheed Aircraft	53
Martin	21 1/2
Merck	85 1/2
Montana Power	38 1/2
Montgomery Ward	34 1/2
Nat'l Biscuit	47 1/2
New York Central	18 1/2
Northern Natural Gas	48 1/2
Northern Pacific	43 1/2
Pac Gas Elec	34 1/2
Penney J. C.	47
Penn RR	16 1/2
Perma Cement	15 1/2
Phillips	48
Proctor Gamble	74 1/2
Radio Corporation	66 1/2
Richfield Oil	47 1/2
Safeway	43
Seac	71 1/2
Shell Oil	38 1/2
Shonny Mobil Oil	61 1/2
Southern Co.	35 1/2
Southern Pacific	30
Sperry Rand	14 1/2
Standard California	64 1/2
Standard Indiana	32 1/2
Standard N. J.	39 1/2
Stokely Van Camp	21 1/2
Sun Mimes	9 1/2
Texas Co.	61 1/2
Texas Gulf Sulfur	14 1/2
Texas Pac Land Trust	24 1/2
Thiokol	26 1/2
Trans America	46 1/2
Trans World Air	13 1/2
Tri-Continental	44 1/2
Union Carbide	108
Union Pacific	36
United Aircraft	50
United Air Lines	34 1/2
U.S. Plywood	50 1/2
U.S. Rubber	46 1/2
U.S. Steel	40 1/2
West Bank Corp	—
Westinghouse	34 1/2
Youngstown	90

## WALL STREET

NEW YORK (UPI) — Stocks were irregularly higher today. Strength in industrials stemmed primarily from two chemical issues, Du Pont and Kodak, both of which climbed between 1 and 2 points. Chrysler, which has led the market in the past two sessions, dropped back 1 1/2 but other autos were firm with American and Studebaker active.

Steels continued to move ahead, paced by Jones & Laughlin and Youngstown with gains of around a point. International oils showed little change. Electronics were firm with Texas Instruments and IBM up around a pair each, and Cleveite and Sunbeam ahead over a point.

Other issues up at least a point were Cenco, Richardson-Merrell, Polaroid, Royal Crown Cola and Xerox.

## Grains

CHICAGO (UPI)—Grain range:

Wheat			
	High	Low	Close
Mar	2.07 1/2	2.06 1/2	2.07 1/2
May	2.07 1/2	2.06 1/2	2.07 1/2
Jul	1.93 1/4	1.91 1/4	1.92 1/4
Sep	1.95 1/4	1.94 1/4	1.94 1/4
Oats			
Mar	.72 1/2	.72 1/2	.72 1/2
May	.71	.69 1/2	.70 1/2
Jul	.69	.68 1/4	.68 3/4
Sep	.68 1/4	.68 1/4	.68 1/4
Rye			
Mar	1.33 1/2	1.31 1/2	1.32 1/2
May	1.33 1/2	1.31	1.32
Jul	1.29	1.27 1/2	1.28 1/2
Sep	1.28 1/2	1.28	1.28 1/2

## Potatoes

PORTLAND (UPI) — Potato market: Steady; Ore. Russets U.S. No 2 3.40-3.50, some low as 3.25, some best 4.00; sized 2 oz spread 4.50-4.75; bakers 3.75 - 4.25; 6-14 oz 3.65-3.90; bakers U.S. No 2 2.75-3.00, 50 lb sbs No 2 2.25-2.65.

## Stocks

MUTUAL FUNDS

Prices until 4:00 a.m. PST today

	Bid	Asked
Affiliated Fund	7.78	8.42
Atomic Fund	4.81	5.03
Blue Ridge	11.33	12.38
Bullock	12.57	13.77
Chemical Fund	10.56	11.48
Comw. Inv.	9.60	10.49
Diver Growth	8.17	8.95
Dreyfus	15.97	17.36
E & H Stock	13.27	14.34
Fidelity Capital	7.95	8.64
Fidelity Trend	12.39	13.47
Fin Inv Fund	4.16	4.56
Founders Fund	5.83	6.34
Fundamental	9.31	10.20
Group Sec Com	12.63	13.83
Gr. Sec Avia El	6.89	7.56
Hamilton H.D.A.	4.90	—
Hamilton C-7	5.91	5.47
Incorp Inv.	6.90	7.54
ICA	9.82	10.73
Investor's Group		
Intercontinental	5.48	6.14
Mutual	11.04	11.93
Stock	17.78	19.22
Royal Jones Jr.	10.37	11.09
Selective	6.36	6.88
Variable	25.05	26.12
Keystone B-1	13.76	15.02
Keystone S-3	4.06	4.44
Keystone S-4	13.97	15.27
M.I.T.	7.70	8.42
Nat'l Inv.	14.52	15.70
Nat'l Sec Div	3.93	4.30
Nat'l Sec Growth	7.89	8.62
Nat'l Sec Stock	7.79	8.31
Pulnam and	15.05	16.36
Pulnam Growth	8.33	9.05
Selected Amer Shareholders		
TV Fund	7.25	7.91
United Accum	13.67	14.94
United Canada	17.39	18.90
United Continental	6.62	7.23
United Income	11.89	12.90
United Science	6.55	6.94
Value Lines	3.19	3.67
Wellington	14.19	15.47
Whitehall	13.14	14.21

## LOCAL SECURITIES

Prices Until Noon Today

	Bid	Asked
Bank of America	62 1/2	63 1/2
Calif Pac Util	26	28 1/2
Con Freight	12 1/2	13 1/2
Cyprus Mines	22	23 1/2
Equitable S & L	33 1/2	36
1st Nat'l Bank	64	67 1/2
Jantzen	26 1/2	28 1/2
Morrison Knudsen	30	32 1/2
Mut Kennels	3 1/2	4 1/2
N.W. Nat'l Gas	34 1/2	36 1/2
Oregon Metallurgical	1 1/2	1 1/2
PP&L	26 1/2	27 1/2
PGE	27 1/2	29 1/2
U.S. Nat'l	78	80
United Utilities	36 1/2	38 1/2
West Coast Tel	21 1/2	23
Weyerhaeuser	27 1/2	29 1/2

## Returns Home

Lee Holliday, prominent Klamath County rancher and member of the board of directors of the Klamath Production Credit Association, has returned to his home on the Reno Highway after two weeks in Hillside Hospital.

He suffered a heart illness and is now much improved.

# New Assault Story Told Jones Jury

Another version of the shooting in which Royal Jones, 37, is alleged to have wounded his wife, Johnnie Mae, 28, with three bullets discharged from a .22 caliber pistol, was presented to the jury in the circuit court of Judge David R. Vandenberg as the trial ended its second day on Wednesday.

Jones, on trial for assault with a dangerous weapon, is charged with wounding his wife twice in the shoulder and again in the head when she refused to let him into their home at 309 1/2 Broad Street moments before the shooting, last Dec. 18.

Statements Jones had made to the district attorney and the city police on two occasions after the incident were at variance with testimony made previously by Mrs. Jones, it developed in court Wednesday.

One of Jones' statements was read to the jury by District Attorney Dale Crabtree and another was later made known through the testimony of Detective Sergeant Walter Conrady of the Klamath Falls police. The story of the defendant as he related it to police was that Johnnie Mae attacked him with an ice pick and he had retaliated in self-defense in shooting her with a pistol.

The incident occurred as Jones returned to his home after being away for several hours, according to statements the defendant made to law enforcement officials. Jones knocked on the front door of his house and was finally let inside after Mrs. Jones first refused to admit him.

Jones said that when Johnnie Mae opened the front door she struck the glass window in the door with an object in her hand. The blow shattered the glass, he said.

The defendant went inside and sat down when Mrs. Jones gave him a box containing his clothing and asked him to leave. It was soon after that Johnnie Mae struck him on the head and the chest with the ice pick, Jones had testified.

In a brief flurry that followed, Jones knocked Johnnie Mae to the floor and shot her with a pistol removed from his hat.

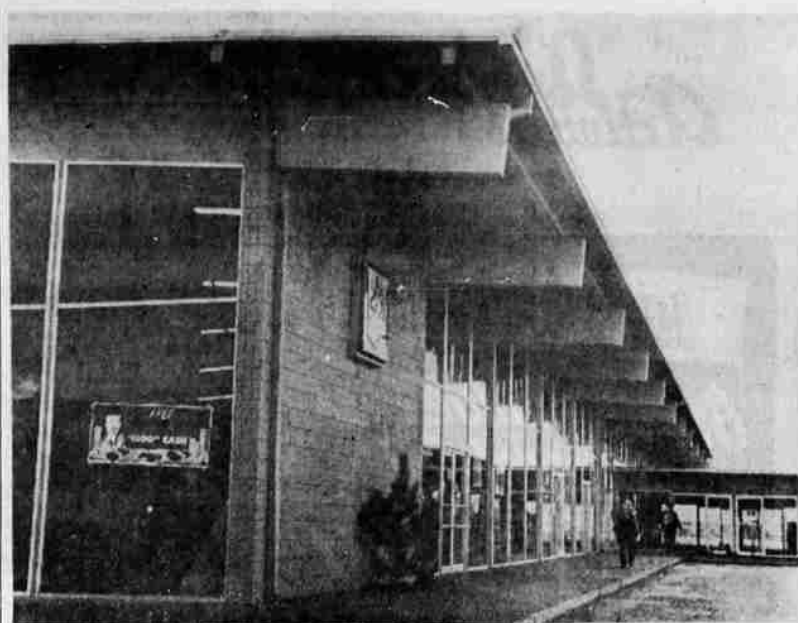
The description of the shooting was contradictory to the version offered by Mrs. Jones during the first day of the trial.

Mrs. Jones said she did not admit her husband into the house. Instead, he broke the window in the door and fired two shots at her through the broken glass. The two bullets struck her in the shoulder, she had testified.

Two of seven state's witnesses summoned to the witness stand Wednesday substantiated part of Mrs. Jones' testimony.

Royal Jones Jr., age 7, son of the victim, told the jury that he observed his father break the window in the front door by striking the glass with a gun. Detective Conrady testified later that during his investigation he found broken pieces of the window in the living room, indicating that the glass had been broken by someone standing on the porch.

Other witnesses who testified were personnel of the Klamath Falls police, including officers R. B. Evans and Charles Evans. Detective Oscar Gerleve and clerk Bernice Matteson. Another witness was Dr. Richard A. Ottman, the physician who treated Mrs. Jones for the bullet wounds she received in the shooting. Dr. Ottman described the three wounds and remarked on a fourth made by a bullet which passed through the back of her hand and exited near the end of a finger.



GRAND OPENING HELD — Today marks the official grand opening of the new Oregon Food Store and the Fashion Villa, both shown here. The supermarket was opened unofficially in mid-December but additional completing work was necessary prior to the formal opening. The Fashion Villa has now been moved to the new structure adjacent to the supermarket and features a complete new stock. Additional

# Chamber Endorses Deer Resolution

(Continued from Page 1)

legal decision on the question of whether the Indian still has the right to hunt indiscriminately on former reservation land.

7. Recommends that a study be initiated to develop improved law enforcement of game laws.

After the motions had been approved by the chamber, Bailey said a notice of the chamber's position along with the seven recommendations would be sent to the county's legislative representatives, including Harry Boivin, Carrol Howe, and George Flitcraft.

On another subject concerning state government, Floyd Wynne, director of the local and state affairs committee, reported that several proposed bills being studied by his group were still "in committee at the state legislature." He said his committee would defer making recommendations on any of them until they came out of committee.

George Callison, manager of the chamber, concluded the meeting with a report on the Okanogan Caribou Trail Association, which is lobbying for a one-number West Coast highway designation along the Pan American Highway linking Mexico and Alaska. Callison said the association is endeavoring to have Highway 97 included as part of the international road.

Two different groups are promoting other highways for one-number route designation; one such route would pass through Toronto. If that course is accepted, the association would press for the designation of a Pan American Highway West, which would extend along the Pacific Coast states and include Highway 97, Callison said.



OREGON FOOD OFFICIALS — These three officials head the Oregon Food Store organization which today is holding open house in the newest and largest market. Left to right, Joe Fales, president; Mrs. Nellie Angstead, secretary-treasurer, and Morgan Johnson, vice president.

# Wheat Acreage Increase Asked

TULELAKE — Ken Baghoff, Tulelake farm adviser, and James Stearns, Modoc County supervisor are in Washington, D.C., in the interest of durum wheat acreages for Tulelake. They seek a renewal of the 40 per cent acreage increase allowed in 1962 by the U.S. Department of Agriculture above the 6,000 acre quota of other years.

Stearns is a member of the National Durum Advisory Board and of the National Durum Growers Association Board of Directors.

Durum wheat growing states, North and South Dakota, Minnesota, and Montana, produced 71,809,000 bushels of durum in 1962, the largest output in 30 years.

# Heart Attack Claims Harold Smith

Harold James Smith, 59, a resident of Klamath Falls since 1921, died Feb. 12, apparently of a heart attack as he was being taken to Hillside Hospital by Peace Ambulance.

He was stricken at the family home, 5240 Altamont Drive. He had been hospitalized for four weeks and had been discharged the morning of his death.

He was a native of Bristol, Mont., born July 23, 1903, the son of Howard J. and Clara S. Smith.

Mr. Smith had been employed at the Monarch Tire Shop on South Sixth Street for 15 years where he had been in charge of the tire recapping service.

He served during World War II in the U.S. Air Force and was honorably discharged in April, 1943.

Survivors include his stepmother, Mrs. Berthe (H. J. Smith), a brother, Charles J. Smith, both of this city; and a step-sister, Mrs. Lewis (Mildred) Steuber of

Prairie City, Ore. (with Rev. Ralph Richardson, First Methodist Church, officiating, Feb. 16, 10:30 a.m. Saturday, Feb. 16; from Hillside Hospital in Klamath Memorial Park.)

# R. Sayers Funeral Set

Funeral services for Ralph Marshall Sayers, 53, will be held Friday, Feb. 15, at 1:30 p.m. in O'Hair's Memorial Chapel, Rev. Robert L. John of First Christian Church will officiate. Final rites and interment will be in Klamath Memorial Park.

He died Feb. 13 in Hillside Hospital of a heart condition complicated by pneumonia.

Pallbearers will be Sherman Carter, Vaughn Christensen, Harold Douglas, Paul Horne, Joseph Phillips and Emery Stockdale.

Mr. Sayers, a resident of Klamath Falls since about 1928, had been a brakeman on the Southern Pacific from 1936 and was affiliated with the Switchman's Union of America.

He was baptized in the Christian Church.

He was a native of Missouri, born Oct. 19, 1909.

Survivors include the widow, Mary, this city; one son, Thomas Sayers of San Jose, Calif.; daughters Shirley Foust of San Jose, Rose Dever, Seattle, Sally Houser, Eugene; parents, Mr. and Mrs. Howard M. Sayers, Seattle; six brothers and two sisters; also 12 grandchildren.

## Obituaries

**SAYERS**  
Ralph Marshall Sayers, 53, died Feb. 13, 1963. Survivors: Wife, Alta, this city; a son, Clarence W., Marysville, Wash.; sisters, Mrs. Rufe Sallers, Danby, Ore.; Mrs. Lela Lee, Beaverton, Ore.; Mrs. Clara Ann Sayers, San Jose, Calif.; Rose Dever, Seattle, Wash.; Eugene, Eugene, Ore. Funeral arrangements will be held Friday, Feb. 15, at 1:30 p.m. in O'Hair's Memorial Chapel, interment Klamath Memorial Park.

## RANDALL

George William Randall, 55, died here Feb. 13, 1963. Survivors: Wife, Alta, this city; a son, Clarence W., Marysville, Wash.; sisters, Mrs. Rufe Sallers, Danby, Ore.; Mrs. Lela Lee, Beaverton, Ore.; Mrs. Clara Ann Sayers, San Jose, Calif.; Rose Dever, Seattle, Wash.; Eugene, Eugene, Ore. Funeral arrangements will be held Friday, Feb. 15, at 1:30 p.m. in O'Hair's Memorial Chapel, interment Klamath Memorial Park.

## SMITH

Harold James Smith, 59, died here Feb. 12, 1963. Survivors: Wife, Clara S., this city; a sister, Mrs. Mildred Steuber, Prairie City, Ore. Funeral arrangements will be announced by Ward's Klamath Funeral Home.

## Funerals

**LAW**  
Funeral services for Rose Corpenning Law will take place from the chapel of Ward's Klamath Funeral Home on Friday, Feb. 15, 1963, at 2 p.m. Concluding services, Klamath Memorial Park.

**NEWTON**  
Funeral services for William A. Newton, 61, will be held Saturday, Feb. 16, at 2 p.m. in O'Hair's Memorial Chapel, interment Klamath Memorial Park.

# Lincoln Day

An appraisal of the administration current policies will be made tonight at the Lincoln Day Dinner at the Winema Hotel by John David Lodge, guest speaker.

The meeting is jointly sponsored by the Klamath County Republican Central Committee, Republican Women of Klamath County and the Young Republican Club.

Reservations may still be made by phoning the Winema TU 4-4181. The dinner is scheduled to start promptly at 7 p.m.

SAVE LAUNDRY WORK HERE!

Do It Yourself Or We'll Do It For You  
Rugs Washed & Dried

"S&H" Green Stamps

**BOB'S**

SELF SERVICE LAUNDRY & DRY CLEANERS  
1711 Main TU 4-9234

IT'S 'JAMBOREE' TIME IN THE KLAMATH COUNTRY!

Eddie Wise presents

**BAR-NONE**

Ranch Party!

4 BIG HOURS OF "COUNTRY" FUN FOR EVERYONE... 1 to 104!

BEST-OF-THE-NORTHWEST COUNTRY & WESTERN MUSICMAKERS

Plus

NATIONALLY-FAMOUS STARS WHEN AVAILABLE!

Each FRIDAY Nite 7:30 to 11:30 P.M.

"The Big Red Barn"

**KLAMATH AUDITORIUM**

ADULTS: \$1.05 • CHILDREN 6 TO 16: 75¢ • UNDER 6 FREE

**"SKEETS" McDonald**

In Person!

One of Columbia Records' finest singers of "Country" Songs!

AUDITORIUM FRIDAY, FEB. 15

BAR-NONE "RANCH PARTY!"

Broadcast Direct From Stage — 7:30 By KFLW

Exclusively at

# GALLENKAMP'S

MADISON SQUARE Shoes for men with the revolutionary new

# UNIFLEX

one-piece molded heel and sole

## GUARANTEED NEVER TO NEED REPAIRING

**SPECIAL 750**

TEN DAYS ONLY

Req. Price 899

MADISON SQUARE moccasin vamp slip-on in black or brown smooth leather. Sizes 6 to 11, B and D widths.

MADISON SQUARE 4-eyelet tie moccasin vamp oxford in black or brown smooth leather. Sizes 5 to 11, B and D widths.

MADISON SQUARE molds an exceptionally long-wearing, non-marking heel and sole directly on to smart, dressy leather uppers, without stitches — without nails. The result is a stronger, more durable shoe, yet so light and flexible it doesn't need breaking in. It resists dampness, won't soften or crack. Uniflex heels and soles are guaranteed never to need repairing because they will outwear the uppers — or the shoes will be outgrown before they are worn out. What man could ask for more?

**GallenKamp's**

711 MAIN ST.

Stores Also in Medford and Eugene

DAILY KLAMATH BASIN SHIPMENTS

	Rail	Truck	Combined Rail & Truck Tl
Oregon	6	14	20
California	11	15	26

F.O.B. & GROWER PRICES  
Klamath Basin

Demand — slow  
Market — dull  
100 lb sacks Russets  
US No. 1A — 6 to 14 oz. - 3.60-2.25—few higher  
Buffed — 10 lb. sacks — mostly 2.70—few 2.80  
US No. 2 — 1.90-2.00

Net price to growers at cellar bulk cwt:  
US No. 1A — unwashed and graded 2.90-2.20—according to quality

COMBINED RAIL & TRUCK UNLOADS

Oregon — 44
Total All Other States — 379
One Week Ago
Oregon — 22
Total All Other States — 385