

MARKETS and FINANCE

Stocks
NEW YORK STOCKS

By United Press International

Allied Chemical	44 1/2
Alum Co Am	55 1/2
American Air Lines	19 1/4
American Can	47
American Motors	22 1/2
A T & T	122 1/2
American Tobacco	29 3/4
Anaconda Copper	46 3/4
Arco	53 1/2
Santa Fe	26 3/4
Bendix Corp	57
Bethlehem Steel	31 1/4
Boeing Air	39
Brunswick	18 1/2
Caterpillar Corp	50 3/4
Chrysler Corp	94 1/2
Coca Cola	93
C.B.S.	49 3/4
Columbia Gas	27 1/2
Continental Can	44 1/2
Crown Zellerbach	47
Crucible Steel	19 1/4
Curtis Wright	19 1/2
Dow Chemical	50 1/2
Du Pont	24 1/2
Eastman Kodak	115 1/2
Firestone	35 1/2
Ford	44 1/2
General Electric	79
General Foods	62 1/2
General Motors	62 1/2
General Portland Cement	18 1/2
Georgia Pacific	47 1/2
Greyhound	34
Gulf Oil	42
Homestake	55
Idaho Power	55
I.B.M.	417 1/2
Int Paper	46 1/2
Johns Manville	46 1/2
Kennecott Copper	74
Lockheed Aircraft	53
Martin	21 1/2
Merk	62 1/2
Montana Power	33 3/4
Montgomery Ward	48 1/2
Nat'l Biscuit	17 1/2
New York Central	42 1/2
Northern Pacific	43 1/2
Pac Gas Elec	33 1/2
Pennex J. C.	47
Penn RR	15 1/2
Perma Cement	15 1/2
Phillips	48
Proctor Gamble	74 1/2
Radio Corporation	60 1/2
Richfield Oil	42 1/2
Safeway	47 1/2
Sears	75 1/2
Shell Oil	36 1/2
Socony Mobil Oil	62 1/2
Southern Co.	55
Southern Pacific	30 1/2
Sperry Rand	13 1/2
Standard California	64 1/2
Standard Indiana	32 1/2
Standard N. J.	21 1/2
Stokely Van Camp	21 1/2
Sun Mines	60 1/2
Texas Co.	14 1/2
Texas Gulf Sulphur	25 1/2
Texas Pac Land Trust	24
Trans America	46
Trans World Air	12 1/2
Tri-Continental	44
Union Carbide	107 1/2
United Pacific	35 1/2
United Aircraft	33 1/2
United Air Lines	50 1/2
U.S. Plywood	45 1/2
U.S. Rubber	45 1/2
U.S. Steel	46 1/2
West Bank Corp	34 1/2
Westinghouse	34 1/2
Youngstown	—

WALL STREET
NEW YORK (UPI) — Stocks

moved ahead today. Chrysler gained nearly a point and then eased back to its starting point under profit-taking pressure. However, all others rose fractions with Studebaker and American Motors the most active. Steels tumbled narrowly, international oils firmed behind Gulf which ran up a point, and most chemicals gained fractions. IBM, Polaroid and Xerox were up between 1 and 2 points.

LIVESTOCK
KLAMATH FALLS LIVESTOCK AUCTION MARKET

Feb. 12, 1963
Receipts: Cattle 311, Calves 200, Hogs 31, Sheep 5.
Last week: Cattle 74, Calves 33, Hogs 6, Sheep 4.
Compared last Tuesday, stocker calves .50-1.00 higher; feeder cattle steady; good demand for high yielding slaughter cows.
Cows: Std., 18.00-19.40; High yielding-Utility-Cml., 15.10-18.70; Cannors & Cutters, 12.60-14.50.
Bulls: Utility & Cml., 18.50-19.30.
Stockers & Feeders: Steers: Good-Choice, 650-720 lbs., Singles, 23.25-25.25.
Heifers: Med.-Good, 520-750 lbs., 18.70-21.00.
Steer Calves: Good-Choice, 364-411 lbs., 28.80-30.80; Good-Choice, 465-535 lbs., 26.35-29.00; Medium, 250-400 lbs., 25.20-26.26.
Heifer Calves: Good-Choice, 280-383 lbs., 26.60-27.70; Good-Choice, 472-503 lbs., 25.60; Com.-Med., 300-450 lbs., 22-25.40.
Cows: Med.-Good, young springers 172.50-200, per head; Feeders, 12.50-14.30.
Baby Calves: Beef, 37.00; Beef/dairy cross, 18-29.00 per head.
Holsteins, 26-30.00.
Hogs: U.S. 1&2 Barrows & Gilts, 197-230 lbs., 17.00. Feeders 15-25.70.
Sheep: Slaughter Lambs, Good-Choice, 90-100 lbs., 16.50-16.80.
Ray O. Petersen, county extension agent.

PORTLAND (UPI)—(USDA) — Livestock:

Cattle 200; few high quality choice steers 23.50-24; standard-grade 19-22; standard heifers 17-18; utility cows 12-14.75; canner down to 11.
Calves 25; no early sales.
Hogs 200; butchers steady to 50c lower; barrows and gilts and 2 grade 22 1/2 lb 17.50; 2 and 3 grade 16.25-17.
Sheep 200; slaughter lambs scarce; cull & utility ewes No. 3 pelt 6.25.

Stocks
MUTUAL FUNDS

Prices until 10 a.m. PST today

Bid	Asked
Affiliated Fund	7.74
Atomic Fund	4.58
Blue Ridge	11.27
Bullcock	12.51
Chemical Fund	10.48
Comw. Inv	9.57
Diver Growth	8.14
Dreyfus	15.87
E & H Stock	13.20
Fidelity Capital	7.87
Fidelity Trend	12.36
Fin Inv Fund	4.14
Founders Fund	5.79
Fundamental	9.26
Gr Sec Avia El	6.84
Hamilton C-H	4.87
Hamilton C-7	4.98
Incorp Inv.	6.87
ICA	9.76
Investor's Group	3.70
Intercontinental	11.03
Mutual	11.03
Nat'l Inv.	14.45
Nat'l Sec Div	3.90
Nat'l Sec Growth	7.85
Nat'l Sec Stock	7.75
Putnam Fund	15.02
Putnam Growth	8.29
Selected Amer	9.12
Shareholders	10.63
TV Fund	7.22
United Accum	13.60
United Canada	17.29
United Continental	6.39
United Income	11.33
United Science	6.31
Value Lines	5.15
Wellington	14.11
Whitehall	13.11

DAILY KLAMATH BASIN SHIPMENTS

Rail	Truck	Combined Rail & Truck Ttl
Oregon	3	12
California	8	11

F.O.B. & GROWER PRICES
Klamath Basin
Demand — U.S. No. 2 good—others fair
Market — barely steady to slightly weaker
100 lb sacks Russets
US No. 1A — 6 to 14 oz. - 3.00-3.25—few higher
Bakers — 12 oz. min. - 3.35-3.50—occ. 3.75
Baled — 10 lb. sacks - mostly 2.70—occ. 2.60
US No. 2 — 1.90-2.00
Net price to growers at cellar bulk cwt:
US No. 1A — 1.75-1.90—occ. best large 2.20
US No. 2 — .90-1.10

COMBINED RAIL & TRUCK UNLOADS
Oregon — 35
Total All Other States — 602
One Week Ago
Oregon — 33
Total All Other States — 654

Hospital Happenings

Wednesday, Feb. 13
12 noon—Molatore's Restaurant, Memorial Gifts Division kick-off.
7:30 p.m.—Main organizational meeting at Community Library in Mallin.
7:30 p.m.—Employe and executive meeting, Molatore's Restaurant.
Friday, Feb. 15
7:00 p.m.—Dorris captains' meeting at the Mountain Valley Moulding Company, in Dorris.
Monday, Feb. 18
12 noon—Captain and workers meeting of Tulalake at the Sportsman's Hotel in Tulalake.
7:30 p.m.—Captains meeting of Loretta at Louis Randall's home in Bonanza.
Friday, Feb. 22
10:00 a.m.—Women's Crusade, First Presbyterian Church, 601 Pine.
10:00 a.m.—Women's Crusade, First Presbyterian Church, 601 Pine.



MRS. ANGELINE SAVAGE

Mrs. Savage Dies Feb. 11

Mrs. Angelina Katherine Savage, 83, a resident of Klamath County for 39 years, died Feb. 11 in a Myrtle Point hospital following a short illness. She was a native of Lakeview, born Oct. 16, 1879. Her family moved to Grants Pass when she was a child and in that city she married the late Edward M. Savage on July 20, 1904. She moved from here to Myrtle Point two years ago. Survivors include one son, James E. (Ted) Savage, Klamath Falls; four daughters, Mrs. Wilmet Hooten, Grants Pass, Mrs. Leona Thomas, Roseburg, Mrs. Nita Warren, Myrtle Point, Mrs. Iris Hazelrigg, Coos Bay; six grandchildren and 17 great-grandchildren. Funeral services will be at 1 p.m. Friday, Feb. 15, from the Hall and Hall Funeral Home, Grants Pass. Pallbearers will be Dick Hager, Art Hampton, Ralph Bilyeu, Doug Hess, Bill McGaughey, Bill Loring.

W. Newton Funeral Set

William M. Newton, 61, died Feb. 12 at the family home, Route 3, Box 224A. He had been in failing health some time with a heart condition and was semi-retired last year. For 24 years he was an employe of the Weyerhaeuser Company and more recently had been in business for himself, buying and selling real estate. Mr. Newton was born Jan. 4, 1902 in Boise, and had lived here since 1926. Survivors include the widow, Thelma of this city, and a brother, F. M. Newton of Seattle. Services will be at 2 p.m. Saturday, Feb. 16, at O'Hair's Memorial Chapel with final rites and interment in Klamath Memorial Park.

Tanker Hunt Scene Shifts

MIAMI, Fla. (UPI)—The search for a tanker missing for 10 days with 39 men aboard shifted eastward today to the north coast of Cuba. The Coast Guard planned to use two planes today in its search for the Sulphur Queen, the 824-foot vessel which mysteriously dropped from sight on a routine run between Beaumont, Tex., and Norfolk, Va. Four search planes Tuesday found no clues. In its hold the ship carried a cargo of molten sulphur, which, if exposed to the sea water, could have touched off an explosion that would have blown up the ship. Planes and surface ships have combed the sear for six days hunting for anything that would give a clue to the ship's fate. Authorities became convinced Tuesday that such clues were not to be found in the Atlantic, and ordered searchers to concentrate on the gulf from the Yucatan Peninsula eastward along the north coast of Cuba. The planes, flying out of Coast Guard stations at Miami and St. Petersburg, Fla., were directed to stay 30 miles offshore of Fidel Castro's island. State Department spokesman Lincoln White repeated Tuesday Cuba has promised to forward any information it gets on the ship.

Potatoes

PORTLAND (UPI) — Potato market: Steady. Ore. Russets U.S. No. 2 3.48-3.50, some low as 3.25, some best 4.00; sized 2 or spread 4.50-4.75; bakers 3.75 - 4.25; 6-14 oz. 2.65-3.90; bakers U.S. No. 2 2.75-3.00; 50 lb sacks No. 2 2.55-2.65.

Obituaries

NEWTON
William M. Newton, 61, died Feb. 12 at the family home, Route 3, Box 224A, Klamath Falls. He had been in failing health some time with a heart condition and was semi-retired last year. For 24 years he was an employe of the Weyerhaeuser Company and more recently had been in business for himself, buying and selling real estate. Mr. Newton was born Jan. 4, 1902 in Boise, and had lived here since 1926. Survivors include the widow, Thelma of this city, and a brother, F. M. Newton of Seattle. Services will be at 2 p.m. Saturday, Feb. 16, at O'Hair's Memorial Chapel with final rites and interment in Klamath Memorial Park.

Funerals

LAVENIK
Funeral services for Michael Peter Lavenik, 32, will be held Thursday, Feb. 14, at 8:30 a.m. in the Sacred Heart Church, Rectory of the Holy Rosary, Wednesday evening at 8 o'clock in the church, telephone 401, Calvary Cemetery. O'Hair's Memorial Chapel in charge.

OFFICE SPACE

Lights, heat and water furnished. \$50.00 monthly. Ask for R370. Phone 4-4161.
Willard Hotel

ARTHRITIS sufferers
have shown rapid improvement

World Famous Spears Hospital
Research at Spears has opened the door to health for thousands of sufferers who have been led to believe there was no relief. If you are interested in the treatment that has relieved so many from bondage of pain and invalidity, write for our free literature, and see your local chiropractor.

SPEAR'S CHIROPRACTIC HOSPITAL
East 10th & Jersey Sts., DE. 3-1581 Denver 20, Colo. Dept. B-1

Insurance System Change Voted By Klamath County School Board

The members of the Klamath County School Board acted Jan. 17 at their regular board meeting to change the system of insurance coverage on buildings and equipment to cut down on total expenses. The board members acting on the advice of their broker of records, Wyatt Padgett, decided to retain the services of only five of the former 32 participating companies for a five year period.

Thieves Tap Reames Shop

Burglars broke into the pro shop of the Reames Golf and Country Club sometime Monday night or Tuesday morning and escaped with merchandise valued at \$66 in one of two thefts reported to State Police Wednesday. Listed as stolen were 36 pairs of white wool socks, a nylon windbreaker jacket, and assorted cartons of cigarettes, gum, and candy. It was the second time the pro shop has been burglarized since last year. In the other larceny case, Herbert Cox Jr., of Fort Klamath, reported the theft of his automobile from the vicinity of his home, 12:15 a.m., Wednesday. Cox told police he would come to Klamath Falls sometime Wednesday to sign a complaint.

CC Slates Dinner Meet

ALTURAS—The Modoc County Chamber of Commerce will meet Wednesday, Feb. 13, at the Modoc Hotel for a chicken dinner at 8 p.m. Following the dinner, reports will be given on the San Francisco Boat Show, progress on the Winnemucca to the Sea Highway, and the expansion program and summer promotion plans of the Model Quarter Horse Association. A report will also be heard on the Businessmen's Seminar to be held in Alturas by instructors from Chico State College.

Grazing Fee Order Ready

WASHINGTON (UPI)—An order increasing grazing fees on public lands in 10 western states probably will be issued this week, United Press International learned today. The Bureau of Land Management has sent the order to Interior Secretary Stewart L. Udall, who is expected to sign it. The order would apply to public land in Colorado, Wyoming, Utah, Montana, Idaho, Oregon, California, Nevada, Arizona and New Mexico. The order is expected to call for an average 50 per cent increase, as recommended last week by Assistant Interior Secretary John A. Carver in hearings before the Senate public lands subcommittee.

Early Ballot On Tax Plans Proposed In Senate Measure

SALEM (UPI)—If a new tax program is referred to the voters, they would vote on it this fall instead of waiting until 1964 under a bill introduced today in the Oregon Senate. The measure, by Sen. Robert Ellstrom, R-Salem, sets Friday, Oct. 18, 1963, as the date for a special election "on all tax measure referrals, if any 1963 tax measure is subjected to referendum." A referral could be initiated either by the legislature or the people. The proposal is, in effect, a compromise between various tax legislation ideas floating around the legislature. The governor has called for an election on a tax program while the legislature still is in session, though he has not submitted a bill. Rep. Joe Rogers, R-Independence, today introduced his bill calling for a double-barreled election on whether the voters want any major tax changes, and whether they would prefer a sales tax or another kind of tax increase. On the other side, legislative sentiment seems strong against the legislature sending a tax program to the people. The problem is, under present laws, if the legislature fails to set an election date and the people carry a tax program to the ballot, any new program would be suspended until the general election in the fall of 1964. Ellstrom's proposal would move

Insurance System Change Voted By Klamath County School Board

In a statement to the Herald and News Padgett explained the facts behind this move and the duties of a broker of record. "I am a duly appointed insurance counselor and broker of record for the Klamath County School District. "In this capacity, I advise the board and administration in matters relating to their insurance business. It is my obligation to bring to their attention any change

Thieves Tap Reames Shop

Burglars broke into the pro shop of the Reames Golf and Country Club sometime Monday night or Tuesday morning and escaped with merchandise valued at \$66 in one of two thefts reported to State Police Wednesday. Listed as stolen were 36 pairs of white wool socks, a nylon windbreaker jacket, and assorted cartons of cigarettes, gum, and candy. It was the second time the pro shop has been burglarized since last year. In the other larceny case, Herbert Cox Jr., of Fort Klamath, reported the theft of his automobile from the vicinity of his home, 12:15 a.m., Wednesday. Cox told police he would come to Klamath Falls sometime Wednesday to sign a complaint.

Grazing Fee Order Ready

WASHINGTON (UPI)—An order increasing grazing fees on public lands in 10 western states probably will be issued this week, United Press International learned today. The Bureau of Land Management has sent the order to Interior Secretary Stewart L. Udall, who is expected to sign it. The order would apply to public land in Colorado, Wyoming, Utah, Montana, Idaho, Oregon, California, Nevada, Arizona and New Mexico. The order is expected to call for an average 50 per cent increase, as recommended last week by Assistant Interior Secretary John A. Carver in hearings before the Senate public lands subcommittee.

Grazing Fee Order Ready

WASHINGTON (UPI)—An order increasing grazing fees on public lands in 10 western states probably will be issued this week, United Press International learned today. The Bureau of Land Management has sent the order to Interior Secretary Stewart L. Udall, who is expected to sign it. The order would apply to public land in Colorado, Wyoming, Utah, Montana, Idaho, Oregon, California, Nevada, Arizona and New Mexico. The order is expected to call for an average 50 per cent increase, as recommended last week by Assistant Interior Secretary John A. Carver in hearings before the Senate public lands subcommittee.

Early Ballot On Tax Plans Proposed In Senate Measure

SALEM (UPI)—If a new tax program is referred to the voters, they would vote on it this fall instead of waiting until 1964 under a bill introduced today in the Oregon Senate. The measure, by Sen. Robert Ellstrom, R-Salem, sets Friday, Oct. 18, 1963, as the date for a special election "on all tax measure referrals, if any 1963 tax measure is subjected to referendum." A referral could be initiated either by the legislature or the people. The proposal is, in effect, a compromise between various tax legislation ideas floating around the legislature. The governor has called for an election on a tax program while the legislature still is in session, though he has not submitted a bill. Rep. Joe Rogers, R-Independence, today introduced his bill calling for a double-barreled election on whether the voters want any major tax changes, and whether they would prefer a sales tax or another kind of tax increase. On the other side, legislative sentiment seems strong against the legislature sending a tax program to the people. The problem is, under present laws, if the legislature fails to set an election date and the people carry a tax program to the ballot, any new program would be suspended until the general election in the fall of 1964. Ellstrom's proposal would move

NYBACK'S

Sympathy flowers are the quiet way of extending your hand and heart to those who remain. Phone Nyback's Flower Fair. TU-4-8188

CALL

Your Lumber Number
TU-2-2563 for this week's
SPECIALS!

4' x 8' x 1 1/2" HARDBOARD Special \$1.95

Gallon of Mastic Free — With \$39.95

BATH ROOM PANELING For the Unit \$39.95
Complete — with 3' x 5' center panel, 2 - 3' x 2 1/2' returns, and Gold Anodized Metal Moldings. By Marlite. New!

Reg. \$3 Sheet Pre-finished \$1.95
24" x 48" PEGBOARD Only

Ideal for Cabinets! 4' x 8' 3/4" BIRCH \$13.50
While It Lasts

This Week Only!

USE YOUR BILD-A-COUNT!

Basin Building Materials
4784 So. 6th Your Lumber Number 2-2563



Judge Vandenberg set 10 a.m. Wednesday, Feb. 20, as the time he would receive entries of plea from Everett Decker, 19; Perry Chocktot, 30; Thelma Huitt, 26; and Wilbur Hickson 42.

4 Arraigned On Larceny Indictments

Four people charged on two indictments for larceny and assault and battery by means of force likely to produce great bodily harm were arraigned in the Circuit Court of Judge David R. Vandenberg Wednesday morning. Judge Vandenberg set 10 a.m. Wednesday, Feb. 20, as the time he would receive entries of plea from Everett Decker, 19; Perry Chocktot, 30; Thelma Huitt, 26; and Wilbur Hickson 42. Charged on the same indictments is Martin Lloyd Strachan, 23, who was arraigned Feb. 7 and is to enter pleas to the two charges in circuit court Thursday, Feb. 14. The group of four men and one woman has been cited for the larceny of two saddles, clothing, and other property belonging to Louis Hutchinson on one of the indictments and for the beating of Francis Hutchinson in his Beatty cabin on the other charge. Both incidents were alleged to have taken place Jan. 21. Bail for each of the defendants has been set at \$3,500 on the larceny charge and \$2,000 on the assault count. Attorneys for those accused have requested the court to reduce bond for each of the defendants. On another matter, the trial of Raymond Hoover, 30, charged with the larceny of an automobile, has been set for April 1. Hoover was apprehended by Reno police last week after jumping \$3,000 bail on the theft charge last December.

Lake County Woman Dies

LAKEVIEW — Mary E. Campbell, 92, a long-time resident of Paisley, died in Lakeview on Feb. 9. She was born Aug. 3, 1870, at Fort Smith, Ark. Her husband, Charles, died Sept. 29, 1962. Survivors are a sister-in-law, Mrs. George Wingfield Sr., Reno; a nephew, George Wingfield Jr., Reno; three nieces, Joan Filmer, Palm Springs; Naomi Clance and Ruth Wingfield of Carmel, Calif. She was a member of the Methodist Church at Paisley, the Rebekah Lodge, and the Fremont Chapter No. 169, OES. Services were held Tuesday, Feb. 12, at the Paisley Methodist Church and interment was in the Paisley Cemetery. The Rev. Lester D. Boulden officiated.

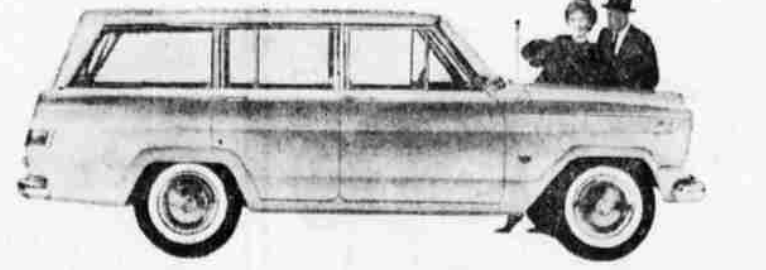
Andrew Olson Dies In East

Andrew Olson, former resident of Klamath Falls, died Feb. 10 in Carlsbad, Minn., where he had gone for final rites and burial of his wife, Mrs. Ethel May Olson who died Jan. 23 in Klamath Falls. Mr. Olson is reported to have been shoveling snow when he suffered a stroke from which he did not recover. Funeral services for him were held in Carlsbad. Survivors include a daughter, Mrs. Marilyn Vandenberg, Seattle; two sons, Wesley Olson, Richmond, Calif., and Dr. Wayne Olson of Kennewick, Wash.; also seven grandchildren and other relatives.

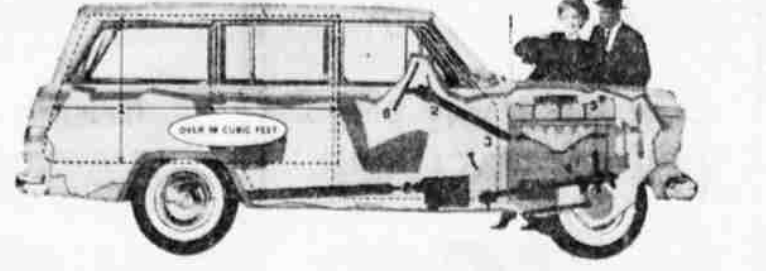
FREE BOWLING LESSONS FOR WOMEN!

New Class Starts February 18th — 10 A.M.
Free Instructions — Free Bowling While Receiving Instruction
Free Shoes Free Coffee
Learn to bowl -- it's fun!
Call 2-5536 and Sign Up — No Obligation!

LUCKY LANES 3319 So. 6th



ON THE NEW 'JEEP' WAGONEER!



Different? Definitely!

1. Handles Loads Other Wagons Can't! The rear opening is Higher (cargo height 3 ft. 5 inches), Wider (4 ft. 7 inches), and with tailgate open it has a cargo length of over 9 ft. 2. Optional automatic transmission and 4-wheel drive. 3. Single selector knob for 'Jeep' 4WD traction. 4. Optional independent front suspension, first in any 4-wheel drive wagon. 5. America's only automotive overhead camshaft engine, the Tornado—OHG—offers longer engine life, lower maintenance costs. 6. Higher, wider, Easier-to-Enter Doors. The new 'Jeep' Wagoneer is the first station wagon ever built to offer the comfort, silence, speed and smoothness of a passenger car—PLUS the traction and safety of 4-wheel drive. It's the one family wagon you can drive almost anywhere, in almost any weather. It's also available in 2-wheel drive models. Step in! Size it up! Try it out at your 'Jeep' Dealer's.

Willy's Motors, world's largest manufacturer of 4-wheel drive vehicles, one of the growing Kaiser Industries

all new Jeep

JOE FISHER
677 So. 7th St. Klamath Falls, Ore.
KAISER-WILLYS PRESENTS THE LLOYD BRIDGES SHOW TUESDAY, 8:00 P.M.

PROTECT YOUR ESTATE
Equitable's Living Insurance
John H. Houston
Service Since 1921