



SHOPPER S & W CANNED FOOD STOPPERS SALE!

STOCK UP ON QUALITY FOODS!

| | | |
|--------------------------------|----------------------------------|--------------------------------------|
| S&W Pineapple | Sliced No. 1 flat | 5^FOR\$1 |
| S&W Applesauce | 303 tins | 5^FOR\$1 |
| S&W Apricots | Whole, peeled, 303 tins | 2^FOR59^C |
| S&W Fruit Cocktail | 303 tins | 4^FOR\$1 |
| S&W Grapefruit | Sections, 303 tins | 4^FOR\$1 |
| S&W Peaches | Freestone halves 2 1/2 tins | 3^FOR\$1 |
| S&W Pears | Halves, 303 tins | 3^FOR89^C |
| S&W Purple Plums | 303 tins | 5^FOR\$1 |
| S&W Asparagus | All green, 303 tins | 2^FOR79^C |
| S&W Sliced Beets | 303 tins | 5^FOR\$1 |
| S&W Peas | 303 tin | 5^FOR\$1 |
| S&W Cream Corn | 303 tins | 5^FOR\$1 |
| S&W Corn | Whole Kernel, 303 tins | 5^FOR\$1 |
| S&W Spinach | Chopped, 303 tins | 7^FOR\$1 |
| S&W Tomatoes | Solid Pack, 303 tins | 5^FOR\$1 |
| S&W Baked Beans | Oven Baked, 16-oz. | 5^FOR\$1 |
| S&W Kidney Beans | 303 tins | 7^FOR\$1 |
| S&W Tuna | Light meat chunk style, 1/2 tins | 4^FOR\$1 |
| S&W Pineapple Juice | 46-oz. tins | 3^FOR89^C |
| S&W Tomato Juice | 46-oz. | 4^FOR\$1 |

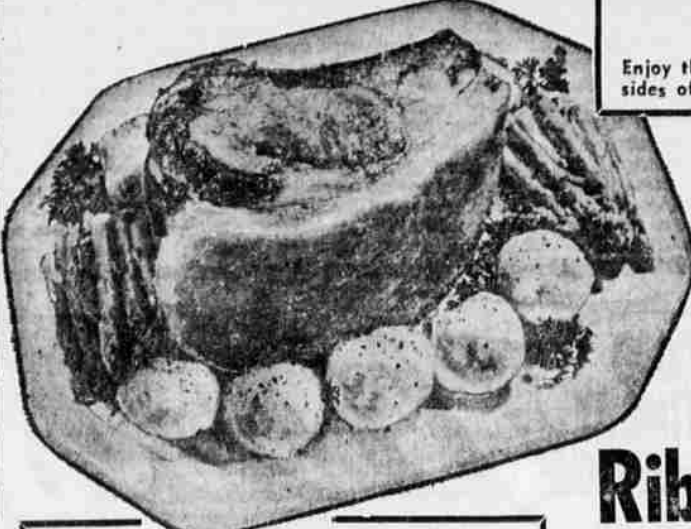


LETTUCE
Crisp, Solid Heads
10^C Each

| | | |
|----------------------|----------------------------|--|
| Cucumbers | Fresh, Green Slicing | 3^FOR29^C |
| Tomatoes | Tubed for your convenience | 27^C Tube |
| Potatoes | Economy Pack U.S. No. 1's | 10^C lb. bag 29^C |
| Peanut Butter | Nut Lunch BIG 3-Lb. Jar | 85^C |

CARTER'S

FINE FOODS
1420 Esplanade Ph. TU 2-2511
Plenty of Free Parking
Right to Limit Reserved!
Prices Effective Thursday Noon



PURETA
Old Fashioned Smoked
HAMS
SHANK CUT
49^C lb
Center Cut Slices **89^C lb**
Thick, Thin or Medium Slices

TOM'S MEAT MARKET

Enjoy the convenience of "service meats" where there is always a butcher on duty to show you both sides of the meat you buy. We feature U.S.D.A. Grade "Choice" steaks and roasts.

U.S.D.A. "Good" and "Choice"
Standing Rib ROAST 79^C lb.

| | | |
|--------------------------|--|----------------------------|
| Rib Steaks | U.S.D.A. Good and Choice. Cut and trimmed to perfection. | 89^C lb. |
| New York Steaks | U.S.D.A. "Choice." The kind you can cut with a fork. | 179^C lb. |
| Top Sirloin Steak | Boneless U.S.D.A. "Choice" Aged For Tenderness | 149^C lb. |
| Boneless Stew | Lean and tender, loaded with flavor. | 63^C lb. |
| Pork Steaks | Eastern, Corn Fed Pork Thick and juicy. | 49^C lb. |
| Spare Ribs | Lean, Meaty | 39^C lb. |
| Ground Chuck | Lean. Try this for flavor. From "Choice" Beef | 59^C lb. |

coffee cake mixes flour pet milk

46^C lb.
S&W 1 and 2-lb. drip or regular
5 \$1 for
Pillsbury's white, chocolate, yellow, double dutch, devils, applesauce, spice. 16-oz.
10 lbs. 79^C
Pillsbury, Regular 1.23
10^C
Evaporated, tall tins

| | | |
|------------------|--|--|
| Dinners | Swift's Candlelight Frozen Chicken, sliced ham, Salisbury, turkey or sliced beef. 11-oz. | 39^C |
| Chili | Dennison's with beans 40-Oz. | 59^C |
| Ketchup | Heinz, 14-Oz. Reg. 29c | 5^FOR\$1⁰⁰ |
| Ketchup | Heinz 20-oz. Reg. 39c | 2^FOR59^C |
| Frostings | Pillsbury's white, fudge or cream vanilla, 14-Oz. | 3^FOR89^C |
| Pretzels | Sunshine Variety 6 or 8-Oz. | 4^FOR\$1⁰⁰ |

| | | |
|--------------------------|--|--------------------------------------|
| Beer | Olympia or Rainier 6-Pack. No-return bottles 3.94 case or 6-Pack | 98^C |
| Chicken Fricassee | Lynden 29-Oz. Reg. 93c | 69^C |
| Dog Chow | Purina 5-Lb., Reg. 83c | 69^C |
| Wax Paper | Zee 100' Rolls Reg. 23c | 4^FOR59^C |
| Turtle Soup | Ancora Clear Green with Imported sherry wine. 10 1/2 Oz. | 79^C |
| Ralston Cereal | Wheat Oats, cooked, 14-Oz. | 33^C |

| | | |
|------------------|--------------------------------|-----------------------|
| CASHEWS | Crescent 5-oz. | 49^C |
| ALLSPICE | Schilling's 1 1/4-oz. | 29^C |
| MUSHROOMS | Shady Oak Pieces & Stems 4-oz. | 37^C |

CARTER'S

... the personal service store that saves you money!
GROCERY PRICES GOOD THROUGH WEDNESDAY, WHILE STOCKS LAST
MEATS AND PRODUCE THROUGH SATURDAY
Open 7:30 a.m. to 6:00 p.m. - Closed Sundays