



VARIETY SHOW — NCO Wives Club members who recently sponsored a dance and variety floor show at Kingsley Field are shown in their costumes. Front row, left to right, are Mrs. George Himmelberger, Mrs. Don Eckert, Mrs. Howard Simmons and Mrs. Al Pennock. Second row, same order, Mrs. James McDermott, Mrs. Eugene Hinds, Mrs. M. C. Harlow, Mrs. Thomas McGreevy and Mrs. Hugh Powell. Mrs. Don Ruble is not pictured. Music was provided by the Star-lit Trio. Mrs. McDermott was chairman of entertainment.



BIG BOY NOW — Gary Derry, son of Mr. and Mrs. Jerry Derry of Malin, celebrated his third birthday on Dec. 29 at a party with guests, Janie and Mary Smalley and Linda and Georgia Rajnus. Also present were his grandmothers, Mrs. Ted Evans and Mrs. Dick Derry.

Women's Activities

By Helen Bechen

PAGE 8-A HERALD AND NEWS, Klamath Falls, Ore. Friday, January 25, 1963

Party Fetes Future Bride

FORT KLAMATH—Local members of the Woman's Society of Christian Service of the Fort Klamath Community Church entertained in the C.I. Clubhouse on Saturday evening, Dec. 29, at a miscellaneous shower complimenting bride-elect Darla Dee Brewer.

The holiday motif, including a decorated Christmas tree, was used for the occasion, with 25 presents from Chiloquin and Fort Klamath. Assisting the guest of honor in opening her many gifts was Alissa Hill of Chiloquin, both being graduates of Chiloquin High School, class of 1960. The gift list was recorded by Mrs. William Brewer.

Darla Dee is the only daughter of Mr. and Mrs. William Brewer, long-time residents and ranchers of the Wood River Valley. She was graduated Dec. 29 from the



HONORED — Darla Dee Brewer, bride-elect of Fred Novak of Palo Alto, was feted at a bridal shower given by local members of the Women's Society of Christian Service of the Fort Klamath Community Church.

Northwestern School of Commerce in Portland, and is now employed in the office of the Western Surety Company in Palo Alto.

Her fiancé is Fred Novak of Palo Alto, son of Mr. and Mrs. Fred P. Novak of Omaha, Neb., where Novak Sr. was transferred in 1961 after having acted for two years as assistant superintendent of Crater Lake National Park. A major in electrical engineering, the bridegroom-to-be will be graduated in June from Stanford University and a quiet wedding is planned there during March spring vacation.

At the close of the pre-wedding affair given in honor of the bride-elect, refreshments were served

to their guests by the hostesses, WSCS members Mrs. Richard H. (Ada) Wilson, Mrs. Stewart Nicholson, Mrs. Richard O. Varnum, Mrs. Lloyd Nicholson and Mrs. Bert Gray.

The DANMOORE HOTEL
1217 S.W. Morrison St.
Portland, Oregon

All Transient Guests. All those who come return. Rates not too high, not low. Free garage, new location, in block from Hotel. Open until 10 P.M. TV's and Radios. Reputation for cleanliness. Children under seven, no charge.

Feather Light Fabric Steals Fashion Scene

NEW YORK (UPI)—The fabrics industry has cooked up a whole soufflé of lightweights for spring.

The manufacturers of dresses, coats and suits talk about the new fabrics in ecstatic terms—cloudlike, feather light, a consistently airy nothing to wear, foamy, bubbly... and the list goes on.

The lightweight wools dominated for day in collections shown this week to visiting fashion reporters in New York for the 40th semi-annual "National Press Week." Its sponsor: the 22-member New York Couture Group of Designers, plus an equal number of auxiliary members.

Typical of the new wools were those used by the firm of Monte Sano & Pruzan, which produced "soufflé" tweeds, mohair wools and black and white block-checked wools "sheer enough to wear into summer."

Surface of the fabrics also provided interest, ranging from rough

to smooth, with loops, kernels, bouclés, nubs, puffs, and matte finishes. Mixtures included silks and wools, synthetics with the natural.

Chiffon far out-ran any other fabric as a favorite for evening; rumper for dress occasions, four ply silk crepe.

Manufacturer Larry Aldrich, who is president of the couture group, showed a batch of late-day dresses in a new silk crepe with matte finish; others in a very lightweight cloque (pronounced clo-ky) silk had an uneven surface.

At Aldrich, the major silhouette theme was the pullover, as it was in numbers of spring collections. His chief designer, Marie McCarthy, cut the pullovers like roomy sweaters or workmen's shirts, either straight or slouched, with sashes or belts. Always, the designer showed a shoulder line getting wider.

Rebekahs Give 50-Year-Pin

Several members of Prosperity Rebekah Lodge paid a visit to Minnie Robinson at her home Saturday, Jan. 19. The noble grand, Charlotte Anderson, presented Mrs. Robinson with a 50-year membership jewel, a gift from the lodge members. Mrs. Robinson joined the Prosperity Rebekah Lodge in Klamath Falls in 1913 and has been a faithful member for this length of time until she became bedfast in recent years.

The visiting group stayed to enjoy cake and ice cream in observance of Mrs. Robinson's birthday.

POLLY'S POINTERS
10-Minute Car Wash

POLLY CRAMER
Newspaper Enterprise Assn.

DEAR POLLY — I am a wife who hates a dusty or dirty car. I take a clean dust mop and dust away; it takes less than two minutes. If washing the car, I also use the dust mop to wash and dry. I can do a complete job in 10 minutes.

MRS. D.C.
GIRLS — This letter came as an answer from someone reading my mind. My black car shows every spot of dust. Only a couple of days ago I thought: "Why hasn't someone made a long-handled brush that would enable a woman to reach and wipe her own car?" Do be sure that mop has no scratchy parts to mark the car's paint job.

POLLY
DEAR POLLY — When a door sticks or needs a bit of sanding and you don't have time (or the energy) to remove it from the hinges, just put a piece of sandpaper between sill and door at the trouble area. Closing and opening several times usually will do the trick nicely.

MRS. I.N.
Secure the sandpaper with a piece of tape or thumb tacks so it will not slip away from where you want it.

POLLY
DEAR POLLY — When I am

about to take a plane trip, I tie red, white and blue ribbons on each handle of my luggage. At the baggage ramp my bags are easily and quickly identified.

POLLY
GIRLS — This I shall do. The last time I waited for my luggage, there were three sets of navy trimmed with red like mine. I was ready to grab the first two. Mine came last. The ribbon can be spotted much farther away than initials or identification tags.

POLLY
GIRLS — I do not believe the following idea will be taken up by many of you but the letter is so amusing I felt I must share it. It is really good for more than one smile.

POLLY
DEAR POLLY — Just when you are pondering over all the silver dollars that have been paid for suggestions for putting "stuff" in the refrigerator, I am submitting another for the "deep freeze!"

My hairdresser advises that freshly dressed wigs retain their

shape and gloss when kept under refrigeration. When we had to choose between space allowance for a turkey or a wig in our refrigerator, the former won the preference and the latter suffered wilting effects in ordinary temperature. I guess people who can afford wigs and wig-hairdos should be able to include a refrigerated "wig-wam." After all, two-car and two-television set families might double up on refrigerators. Hoping to receive a silver dollar for a down payment on one, I am,

HEADY GLAMOURAMA
GIRLS — If any of you wig wearers think of using this, remember it goes not in the freezer section but the cold part. Of course, your good housekeepers would have it covered — either with a plastic wrap or in its box — so that no moisture can undo the hairdresser's work. Although this part of the refrigerator should have no moisture, it can be created just from uncovered dishes.

Share your favorite homemaking ideas... send them to Polly in care of Herald and News.

INCOME TAXES
See Your Reliable Income TAX CONSULTANT
CHAS. HATHAWAY
Auditing - Bookkeeping
120 N. 10th TU 4-5473



ON THE FASHION SCENE — The fabric industry has cooked up a whole soufflé of lightweights for spring. Elegantly sweeping into the foreground of the spring scene is this tweed coat from the 1963 collection of Monte-Sano and Pruzan. With three-quarter sleeves, it features a princess line done in a Lesur tweed of grey, black and white colors that blend in a semi-flat texture. Three large novelty buttons dot the front closing.

— UPI Telephoto

Printed Pattern Doll Wardrobe

Fits 20" Talking Doll 9185



by Marian Martin

First recorded Christmas celebration in North America was on St. Croix Island, Maine, in 1604.

She Re-Grew Hair



For Dramatic Story See Page 3 of Section A

FOR TALKING DOLL

New! From play to party to bedtime, here's a 6-part wardrobe for the new, 20-inch talking doll your little girl loves. Have fun and save dollars—sew clothes or remnants.

Printed Pattern 9185. For 20 inch talking doll. See pattern for yardages.

Fifty cents in coins for this pattern—add 10 cents for each pattern for first-class mail. Send to Marian Martin, care of Herald and News, Pattern Dept., 222 West 10th St., New York 11, N.Y. Print plainly name, address with zone, size and style number.

First time ever! Glamorous movie star's wardrobe plus 110 exciting styles to sew in our new Fall-Winter Pattern Catalog. Send 35 cents.

GUARANTEED REPAIR SERVICE AT WARDS
H.C. phone, 1920, TV, appliance & stereo technicians in just 2 phone calls. We'll have the service... and the price! Call today!

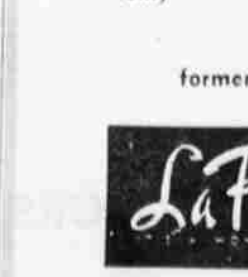
MONTGOMERY-WARD SERVICE DEPARTMENT
TU 4-5388

FINAL CLEARANCE!

MATERNITY TOPS

only **\$2.99**

formerly to 7.95



Party Time

is the time to reserve one of the 3 large banquet rooms at the Winema Motor Hotel. Our experienced staff can help give you planning ideas for parties, reunions, club meetings or conventions. Stop in anytime and let us help you!

Winema Motor Hotel
1111 Main Street

Crater Lake MILK

IS NOW THE **ONLY MILK** PASTEURIZED AND BOTTLED FOR YOU FRESH right HERE in KLAMATH FALLS

FROM YOUR DEALER OR ROUTE MAN

Crater Lake DAIRY FOODS

Complete Home Entertainment Center by RCA VICTOR!

- Complete Home Entertainment Center featuring four-speaker Total Sound Stereo System including Two New 8" Acoustic Lens Mounted Speakers for Improved Stereo Sound Separation
- Breathtaking New Vista Television
- Deluxe FM-AM Radio Tuner adaptable to FM Stereo Radio Reception
- Automatic 4-speed "Victrola" Phonograph

Only **\$478** With Trade

Money Saving, Space Saving PORTABLE

The "Modemette" 173-A-50M **\$149.95**

Black & White Special — The "ADAIR" Series 233-B-602M **\$178** With Trade

17 inch (Overall Diagonal) 156 Sq. Inch Picture

23" Tube (Overall Diagonal) 282 Sq. Inch Picture

Klamath Basin COLOR TV Headquarters
HAPCO.
Home Appliance Co. Stores growing with Oregon
1001 Main TU 4-8183

RCA VICTOR TV TRADE-IN SALE

RCA VICTOR MARK 8 COLOR TV

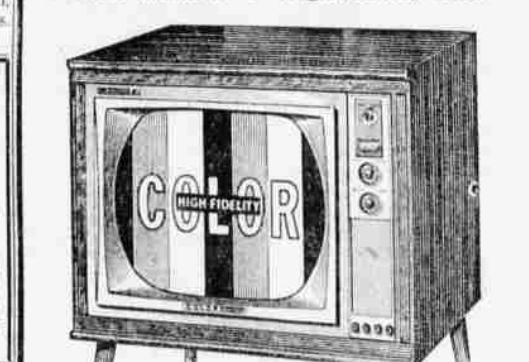


The FRASER Special Series 213-F-10-M 260 sq. in. picture

If you've been thinking of color TV, ask anyone who owns one!

only **\$475** With Trade Only \$6 A Week

RCA's Lowest Priced Color TV • Only 2 Color Controls • High Fidelity Color



The Gaynor Special Series 213-G-155M 260 sq. in. picture

Only \$550 With Trade!

RCA COLOR TV — Proven in the homes of America for the past 8 years!

Complete Home Entertainment Center by RCA VICTOR!

The FAIRFIELD Series 233-D-95-M 23" tube (overall diag.) 282 sq. in. picture

RCA VICTOR Near Vista TV

- Complete Home Entertainment Center featuring four-speaker Total Sound Stereo System including Two New 8" Acoustic Lens Mounted Speakers for Improved Stereo Sound Separation
- Breathtaking New Vista Television
- Deluxe FM-AM Radio Tuner adaptable to FM Stereo Radio Reception
- Automatic 4-speed "Victrola" Phonograph

Only **\$478** With Trade

Money Saving, Space Saving PORTABLE

The "Modemette" 173-A-50M **\$149.95**

Black & White Special — The "ADAIR" Series 233-B-602M **\$178** With Trade

17 inch (Overall Diagonal) 156 Sq. Inch Picture

23" Tube (Overall Diagonal) 282 Sq. Inch Picture

Klamath Basin COLOR TV Headquarters
HAPCO.
Home Appliance Co. Stores growing with Oregon
1001 Main TU 4-8183