

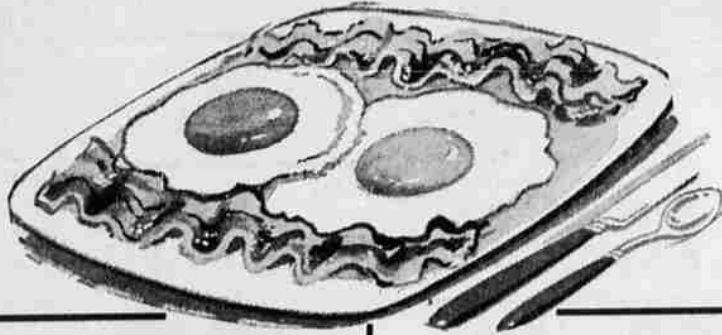
CARTER'S

... the personal service store that saves you money!

Special Prices Good Through Saturday!
While Stocks Last

Delicious Morning, Noon or Night—

Bacon 'N Eggs



Local Farm Fresh
"AA" LARGE

EGGS
49^c
Doz.

Famous Nebergall's
THICK SLICED

BACON
59^c
lb.

A complete family meal for JUST OVER \$1.00. Good any time of the day, too. Add zest to your bacon 'n eggs by serving some of our famous **KNOTT'S BERRY FARM JAMS AND JELLIES** on hot buttered toast. We've a complete stock of all varieties.

fruit pies
flour
crisco
dinners

Cottage frozen,
big 22-oz.
size. Apple,
Cherry or Peach

3 for 79^c

Drifted Snow

10 lbs. 99^c

Shortening

3 lb. tin 67^c

Swift's Candlelight frozen.
11-oz. Salisbury Steak, Sliced
Beef, Turkey with Dressing,
Fried Chicken or Ham

2 for 89^c

TOM'S MEAT MARKET

Enjoy the convenience of "service meats" where there is always a butcher on duty to show you both sides of the meat you buy. We feature U.S.D.A. Grade "Choice" steaks and roasts.

Golden Crest

Honey

Big 1.19
5-lb. Tin

95^c

Lindsay Medium Pitted

Ripe Olives

No. 1
Tall Tin

3 FOR 79^c

Dennison's

Chili with Beans

Large
40-oz.
Size

59^c

Wilson's

Bif

Chopped Beef,
12-oz. Tin

39^c

Kraft Miniature

Marshmallows

29c 10 1/2-oz. Size

19^c

KOOL AID

All Flavors
Reg. 6 for 29c

3 FOR 10^c

Let's Have A Salad



Radishes or Green

Onions Your Choice

5^c
Bunch

Large Snoboy Hawaiian

Pineapple

Each

49^c

Snoboy's Sunkist, Med. & Large

Navel Oranges

2 LBS

29^c

Snoboy Indian River Pink

Grapefruit

Large
Sizes

6 FOR \$1⁰⁰

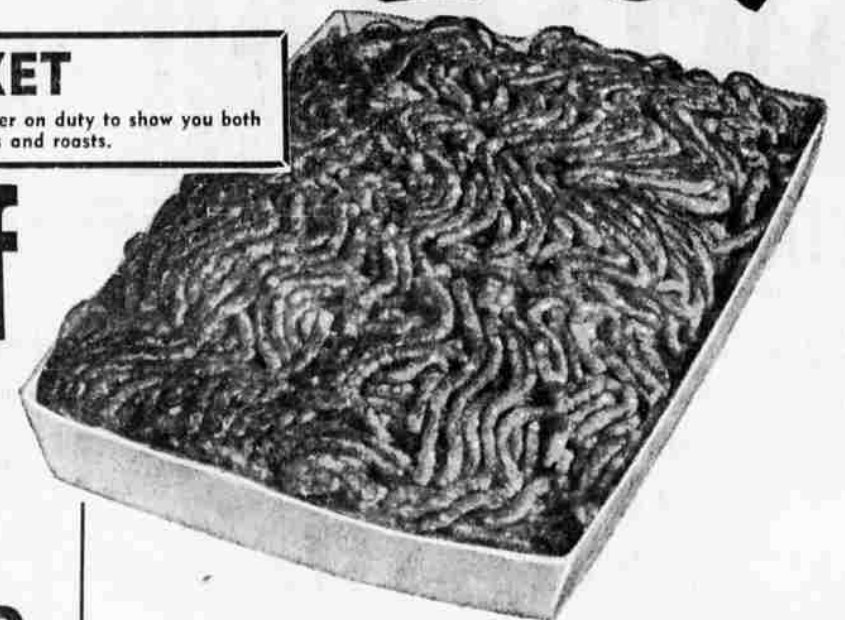
U.S. No. 1 — 8 to 10-oz. Extra Special
BAKING

POTATOES

10-lb.
plio bag

49^c

Ground Beef
3 lb. 1¹⁹



Pot Roast

U.S.D.A. 'Choice' and 'Good'
Blade cuts (7-bone and round
bone cuts 59c lb.)

49^c
lb.

Locker Beef

Side Half,
Cut and Wrapped **51^c**
Front 1/4,
Cut and Wrapped **45^c**
U.S.D.A. Grade 'Good' Beef

Sausage Rolls
Scallops

Nebergall's 1-lb. rolls

3 FOR 1⁰⁰

Eastern Scallops
1-lb. package

79^c

CLEANSER

Ajax Scouring
Reg. 2 for 35c, 14-oz. size

2 FOR 25^c

DINNER NAPKINS

KLEENEX
50 Count

2 FOR 29^c

NOODLES

Betty Crocker
Almondine, reg. 49c
5 1/4-oz. size

39^c

DRIED BEEF

Swift's sliced
Reg. 47c, 2 1/2-oz.

39^c

PREAM

Powdered Cream
Reg. 59c, 7-oz.

45^c

SALVO

Washing Tablets
Reg. 2.59, Jumbo Size

2¹⁹

PUPPY FOOD

Bonnie 5 1/2-oz. size
4 Flavors: kidney, liver,
chicken or beef

4 FOR 69^c

KANGAROO TAIL SOUP

Fancifood
10-oz.

49^c

Duncan Hines
Buttermilk

Pancake Mix

Reg. 45c
2-lb.
Size

29^c

Kraft Cottage

**AMERICAN
CHEESE**

2-lb.
Loaf **53^c**

CARTER'S

FINE FOODS

1420 Esplanade Ph. TU 2-2511

Plenty of Free Parking

Right to Limit Reserved!

Prices Effective Thursday Noon thru Sat.