

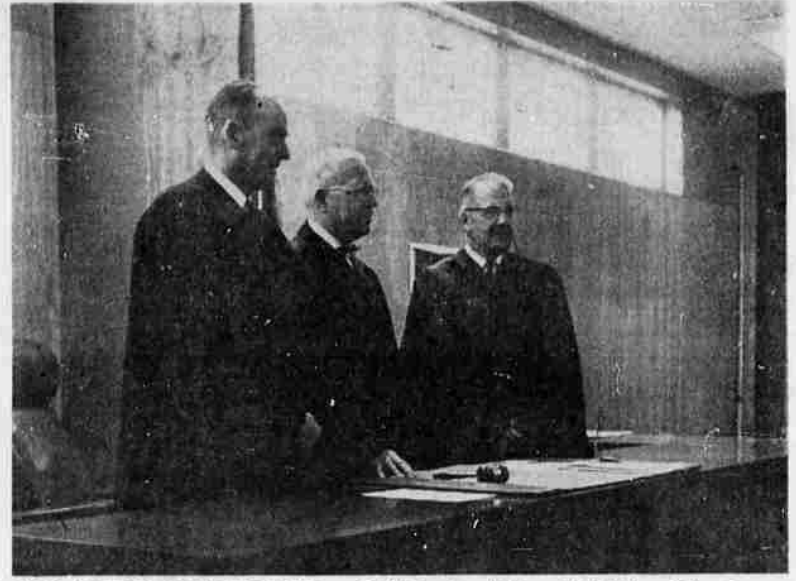
TOP 1962 STORIES OF AREA REVIEWED



OTI CAMPUS DEDICATED — Site of the new campus of Oregon Technical Institute on the north edge of Klamath Falls was dedicated in special ceremonies on Thursday, Sept. 20. Gov. Mark Hatfield spoke about the future role of OTI in higher education, and was assisted by OTI President Winston Purvine in unveiling a dedicatory plaque. Governor Hatfield is shown at right, and Purvine left. The plaque is located near what will be the future classroom building of the campus.



IMPORTANT ROUTE OPENED—The last segment of the Winnemucca-to-the-Sea Highway was dedicated on Saturday, Sept. 22, with a special ribbon cutting ceremony at Doherty Slide about 70 miles east of Lakeview. In this photo representatives of three states participate in the ribbon cutting. Left to right, Sen. Randolph Collier, California; Sen. Harry Boivin, Klamath Falls, and Gov. Grant Sawyer of Nevada. J. Vern Owens, Klamath Falls, was emcee for the program.



NEW COURTROOM DEDICATED — Chief Justice William McAllister of the Oregon State Supreme Court, far right, dedicated the new circuit courtroom in the addition to the Klamath County Courthouse. He is shown here with the county's two circuit judges, David Vandenberg, center, and Donald Piper, left. Facilities in the new addition provide a new district courtroom in addition to the circuit court quarters.



CROWNED MISS INDIAN AMERICA — A Klamath Falls girl, Ramona Soto, was named Miss Indian America of 1962 at the All-American Indian Days at Sheridan, Wyo. Upon her return home, Ramona was feted at a special reception at the First Presbyterian Church. She was also a guest of Century 21 at Seattle. She becomes titular head of all Indian tribes in America and receives a year's scholarship and other honors.



FREMONT MARKER ERECTED — On Sunday, Oct. 7, the Children of the American Revolution (CAR) sponsored a dedication ceremony for a bronze marker at Denny Creek in memory of Capt. John C. Fremont. It also honored Lt. Archibald Gillespie who brought a verbal message to Fremont from President James Polk. This message sent Fremont hurrying into California. It was at this spot, also, that the Indians attacked Fremont's party and killed three of his guides. Among them was a half-breed named Denny for which the creek was named by Fremont. In this view one of the heads of a patriotic organization places a wreath at the marker.



STORM BATTERS AREA — A mid-October storm that was tagged as the tail-end of typhoon Freida smashed into the state and caused damage estimated in excess of \$20 million. However, much of the local area escaped with only wind damage to roofs . . . and trees. In this view, a large tree leans on a home at 2212 Oak Street. Falling trees did minor home damage and blocked highways in the area. The west side of the Cascades, however, bore the main fury of the storm.



FISH KILL PROBED — In early August reports of a big fish kill on Lost River brought pictures such as this one showing rainbow as well as bass killed in a short stretch of Lost River just below Olene. Authorities later said it was caused by a lack of oxygen just below the dam coupled with insecticides from irrigation ditches being cleaned in the area.



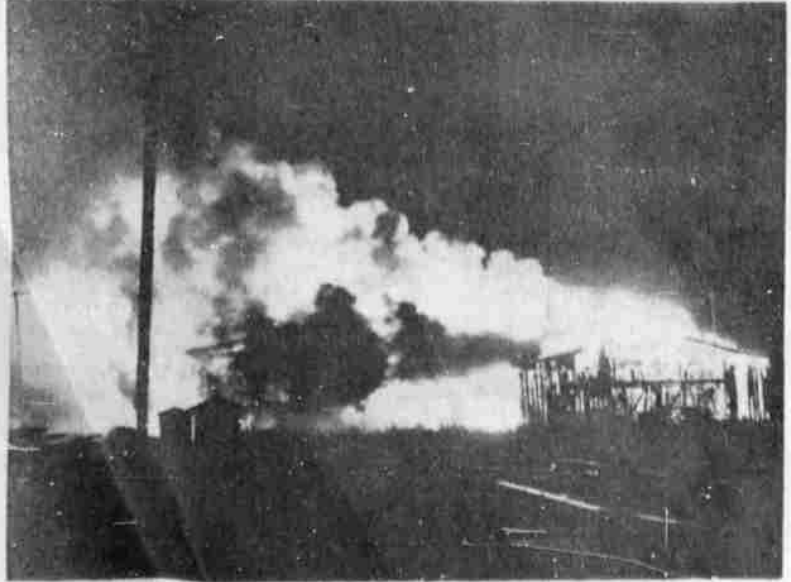
SPECTACULAR BLAZE — Flames did little more than aid the dismantling job at the site of the old Klamath Lumber and Box plant at Pelican City on Monday, July 2. Flames lit the sky. This view shows the burning structure. Most of the equipment had been moved out following the sale of the entire plant at auction several months before. Firemen prevented the blaze from spreading.



SCHOOL CORNERSTONE LAID — About 250 persons attended special ceremonies on Sunday, Sept. 23, at which the cornerstone for the new Chilquin High School was laid. The Masonic Lodge of Chilquin was in charge of the program. Here, County School Superintendent Cliff Robinson, left, and Robert Wood, worshipful master of the lodge and emcee of the program view the cornerstone prior to the ceremony.



GIANT SUPERMARKET COMPLETED — The biggest supermarket in the area opened its doors in mid-December. The new Oregon Food Store occupies more than 28,000 square feet of space and provides additional space for such other enterprises as a bakery and other Oregon Food Store activities. The new market provides parking space for more than 300 cars and was constructed at an estimated cost when fully equipped of approximately \$400,000. Located on Avalon between Shasta Way and South Sixth, it is slated to be the first in a new shopping center development in that area.



PLANING MILL BURNS — Several large fires hit mill structures during the year. In this view, the planing mill at Ellington's Lumber Company is shown being consumed by a fire on Friday evening, Oct. 12. Damage was estimated in excess of \$100,000. Prompt fire department response saved the mill from further damage.



CANAL BREAKS — Water pours through a 60 to 80 foot break in the D canal in this photo about three miles east of Merrill on Tuesday, Aug. 21. The break swept out a concrete spill and flowed into a big drain averting any serious flooding of surrounding farmland. It was quickly repaired.



NEW STORE OPENS — The new Safeway Store at Ninth and High streets was open for business on May 28 and the old store was then demolished. Bowden Brothers Construction Company of Portland were contractors for the structure which cost about \$90,000. The area occupied by the old store was converted into paved parking space.