



**GRADING COMMITTEE** — The Cedarville Bull Sale Grading Committee is shown here. Left to right are Herman Weber, Alturas; Reuben Albaugh, Davis, and Sam Therber, McArthur. —Barbara Jobe Photo

## Modoc Bull Sale Brings Average Of \$605 Per Bull

ALTURAS — Seventy-six bulls were sold recently at the Modoc Bull Sale in Cedarville for \$46,570, with an average of \$605 per bull. This much talked of rate of gain sale was considered a big success as more than 450 cattlemen and buyers swarmed to the fairgrounds to take part in the barbecue put on by the Bull Sale Committee and the Cedarville Rotary Club.

The grand champion bull, consigned by Kramer and Sons of Bieber, was sold by Howard Brown, auctioneer, for \$1,125 to Thad Bath of Adin. This junior yearling bull made a daily gain of 2.1 pounds per day.

The reserve grand champion bull consigned by the Lucky Hereford Ranch of Gilroy, with a daily gain of 2.4 pounds per day, was sold to Bob Byrne of Malin for \$1,200. This type junior bull was the top priced seller of the sale.

Louis Cockrell of Cedarville bought eight bulls, while Thad Bath of Adin bought seven bulls averaging \$845 and the Rice Livestock Co. of Alturas bought seven bulls at an average of \$800 each. The Rice Livestock Co. bought all the bulls consigned by Orvis and Son for the second year in a row.

Before the sale the bulls were graded on soundness and conformation. Members of the sifting committee were Dr. Jack Howarth of Davis, Phyl Peterson of Ft. Bidwell and Pete McGrava

## Modoc 4-H Cops Awards

ALTURAS — Modoc County 4-Hers came home with ribbons and high honors from the Pacific International Exposition held in Portland recently. Beth Baird of the Alturas Warner Mountain 4-H Club won second ribbon with her heavyweight Angus steer in competition with 120 others in her class. She sold her steer for 29 1/2 cents a pound to the IGA Stores of Oregon.

Brother Bill Baird of the Warner Mountain 4-H Club kept up the family honor with his heavyweight shorthorn steer placing fifth in its class. He sold his steer for 28 cents per pound.

Fred Lindsey of Tulake placed sixth and seventh in the Hereford lightweight class with his steers.

Three steers of Modoc County placed second in their class and Peggy Calahan, Bill Baird, Beth Baird and Fred Lindsey placed third in the Herdsmanship Award. This award was won in competition with county groups from Washington, Oregon and California.

The Modoc Judging Team received a second ribbon in competition with 45 teams from Oregon, Washington, California, Idaho and Nevada. High point judge on the Modoc team was Peggy Callahan of the Pit River 4-H Club.

Dr. Al Baird of Alturas who took the Modoc 4-H group to the show also showed his two steers and placed third with his Hereford steer and fourth with his shorthorn steer in the open competition.

The Modocers were given a big help by Joe Smith of the Island Acres Ranch of Klamath Falls who handled all the Modoc cattle to the show. Island Acres showed the Grand Champion Angus bull at the PIE show.

**REMEMBER!**  
when it comes to a truck, see Bob or Jack — Trucks are their business!

**JUCKELAND MOTORS, Inc.**  
Year International Dealer  
11th & Klam. Ph. 2-2381

## Lake County Bull Sale Brings \$508 Per Animal

LAKEVIEW — Sixty nine bulls consigned to the Lake County Range Bull Sale held at the fairgrounds here Friday were sold for an average of \$508. Most of the animals were Herefords.

The grand champion was consigned by Burton L. Chambers of Lakeview and purchased by Ted Hyde of the Yamsey Land and Cattle Company of Bly for \$750. Another of the Chambers' bulls was sold later for \$800 to the Meryl Creek Cattle Company (Frank W. Obenchain) of Bly. Chambers averaged \$750 on four bulls.

Ted Hyde was top buyer at the sale with \$3,810 for six animals. Reserve champion, consigned by Frank Duncan of Cassel, Calif., brought \$550 and was purchased by Hyde.

The grand champion pen of two was shown by Frank Duncan and purchased by Barry Brothers of Lakeview for \$410 each; the reserve champion pen of two, consigned by Seven Oaks Herefords of Central Point, was purchased by Grobs Brothers of Bonanza, for \$450 each.

Other strong buyers were George Elder, Paisley; Yamsey Ranch (Dayton Hyde), Klamath County; Flynn Brothers, Plush; Mabel Schumacher, Silver Lake; and Meryl Creek Cattle Company (Obenchain), Bly.

The sales were as follows: Burton Chambers to Yamsey Land and Cattle, \$750; Frank Duncan to Yamsey Land and Cattle, \$550; Emerald Empire Herefords, Eugene, to Lyle Hill, Lake City, Calif., \$750; Frank Day, Montague, Calif., to Yamsey Land and Cattle, \$675; Herbert Ekstrom to Yamsey Ranch, \$600; Burton Chambers to Yamsey Land and Cattle, \$750; Robert Fields, Central Point, to George Elder, Paisley, \$675.

Frank Duncan to Yamsey Ranch, \$600; Emerald Empire to Yamsey Cattle, \$510; Emerald Empire to George Elder, \$525; Harold D. Eakin, Grass Valley,

to George Elder, \$300; Eakin to Mabel Schumacher, pen of 2 at \$510; W. W. Andrews to George Elder, \$350; Frank Anderson to Bob Weir Jr., \$500; Bartell Brothers, Bonanza, \$485; Robert Field, Central Point, to R. J. Snider, New Pine Creek, \$450; Seven Oaks to T-Bone Ranches, Lakeview, \$510.

L. L. Shelley, Montague, Calif., to E. T. Lawson, New Pine Creek, \$700; L. L. Shelley to Ben Vernon, Lakeview, \$500; Frank Anderson, Heppner, to A. E. Anderson, Lakeview, \$635; Frank Anderson to A. E. Anderson, \$610; Herbert Ekstrom, Lone, Ore., to Flynn Brothers, Plush, \$620; Bartell Brothers, Bieber, Calif., to Yamsey Cattle, \$575; W. W. Andrews, Keating, Ore., to George Elder, \$500; L. L. Shelley to T. A. Lawson, New Pine Creek, \$600.

Emerald Empire to Flynn Brothers, \$370; Frank Anderson to Barry Brothers, Lakeview, \$485; Burton Chambers to Meryl Creek Ranch, \$800; Meryl Creek to Barry Brothers, pen of 2 at \$410 each; Robert Field to M. G. Dunham, Lakeview, \$435; Seven Oaks to Grobs Bros., \$465.

W. W. Andrews to George Elder, \$520; L. L. Shelley to T. A. Lawson, \$500; Harold D. Eakin to Flynn Bros., \$650; Bartell Brothers to Yamsey Ranch, \$535; Seven Oaks to Grobs Bros., pen of 2 at \$450; R. H. Haller, Keating, Ore., to W. E. Butler, New Pine Creek, \$450; Frank Duncan to Lawrence Iverson, Silver Lake, \$480; J. C. Moran, Vernonia, Ore., to Harvey Ranch, Paisley, \$430.

J. C. Moran to Barry Bros., \$270; J. C. Moran to Ernest Robnett, \$270; L. L. Shelley to J. G. Dundiff, New Pine Creek, \$420; Herbert Ekstrom to R. J. Snider, \$450; Susan Hotchkiss, Lakeview, to Meryl Creek Ranch, \$400; Seven Oaks to Grobs Bros., \$430; Frank Duncan to Henry O'Keeffe, Adel, \$440.

Frank Day to Yamsey Ranch, \$700; R. H. Haller to Clellon Baker, New Pine Creek, \$400; Hal-

lowed in the case of the chlorate compound. In general the chlorate-borate compounds are not as effective on peat type soil as are some of the newer types of compounds.

The CMU chemicals including Telvar and Karmex and combinations of these materials with other compounds have proven very effective in the past few years. Designed for specific purposes these chemicals must be applied according to the manufacturer's directions for proper control work. Cost per square rod or per acre basis is an important factor.

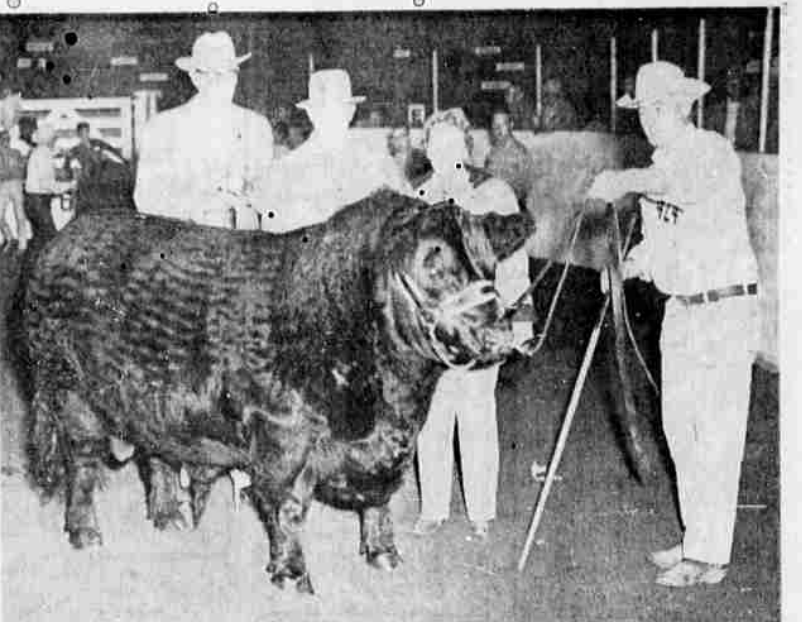
The newest family of compounds which included Simazine and Atrazine are showing extremely fine promise on both peat soils and mineral soils. Simazine is the least soluble of the compounds giving excellent long-term control at the surface of the soil against annual weed pests. Atrazine being more soluble will leach down into the soil giving better control of deep-rooted plants. These compounds figured on a square rod or square acre basis have proven to be quite economical.

Apply soil sterilants this fall for best results; follow the manufacturer's directions closely as to the rate per square yard or per square rod application and figure the cost between the various chemicals under your conditions for a given area. Some materials are more economical than others and cost consideration is an important part of the planning.

**Soil Sterilant Usage Listed By County Agent**

Control of weeds with fall application of soil sterilants is an important phase of a weed control program, according to J. D. Vertrees, County Extension Agent and Harold Schieferstein, County Weed and Rodent Control Supervisor.

Soil sterilants in this area should be applied in the fall and early winter months for best results. Most soil sterilants applied in early spring do not have a chance to become effective, and disappointment results in most cases of spring application of soil sterilants.



**TOP HONORS** — Selected as senior and grand champion Angus bull at the recent Pacific International Livestock Show was Mr. Island Acres 20, owned by Mr. and Mrs. Joe Smith, Klamath Falls. Left to right, Joe Smith, Bill Normile, Grass Valley, California, judge of the show; Mrs. Smith, and Art Steinwaden, holding the halter. —Photo by American Angus Association

## Island Acres Farm Entry Takes Top Awards At PIL

The recent Pacific International Angus breeding cattle show in Portland turned out to be a show of high quality blacks, with nearly 70 head competing. They represented nine herds in Washington and Oregon. Bill Normile, Grass Valley, Calif., judged the entries.

He picked as his senior and grand champion bull, Mr. Island Meadows, Chehalis, Wash., for Zaramere 92, a 2-year-old bull.

Bardamere 40, also an entry of Hamilton Meadows, was selected as senior and grand champion female, and Catlin and Anderson, Yakima, showed the reserve senior and reserve grand champion female, Blackcap of Appleland.

Glacier View Ranch, Rockport, Wash., owned the junior champion female, GVR Estons Charlene, a summer yearling heifer. Mr. and Mrs. Frank Hamilton, Chehalis, displayed the reserve junior champion female, Miss Black Beauty of WS 150.

The senior get-of-sire competition was won by Island Acres Farm, with cattle sired by TT Mr. Eileenmere 16. Island Acres also won the best-of-two-bulls contest. Top prize in the junior get-of-sire classes was taken by Hoots Angus Ranch, with calves sired by Eileenmere 1350. The ranch also took first place in the best-of-three-bulls competition.

The junior steer show winners were as follows: champion 4-H Angus steer, E. G. Footo Jr., Fife, Wash.; reserve champion Angus steer, Kristin Thomas, Portland; champion FFA steer, Mike Kristen, White Swan, Wash.; reserve champion Angus steer, Dave Shelton, Pomeroy, Wash.

Both open class Angus steer champions were exhibited by Washington State University, Pullman. They later won both grand championship and reserve grand championship of the open Angus steer class. Mike Kristen led his blocky Angus to the reserve grand championship of the FFA division.

Joe Damon, Caldwell, Idaho, judged the steer entries.

ALTURAS — The Alturas FFA Livestock judging team participated Oct. 21 at the Chico Regional Field Day. The field day was attended by FFA teams from Northern California. This annual livestock judging day is sponsored by the Chico Rotary, the Silver Dollar Fair, the Regional California Agriculture Teachers Association and the Young Farmers of Chico State College.

The senior judging team from Alturas is made up of Bill Mann, Andy Olsen, Gordon Bailey, and David Starr. The novice or first year judging team is John Picote, David Pierce, and Jim Ireland. Chris Starr, local FFA adviser, accompanied the boys on the trip.

The chairman explained that wheat producers subject to marketing quotas on the 1962 crop are those who will have an acreage of wheat in excess of the smaller of (a) 13.5 acres or (b) the highest number of acres actually planted to wheat on the farm for harvest in any of the calendar years 1959, 1960, or 1961.

Such farmers may have thought that when Congress made the mandatory 10 per cent reduction in the national wheat marketing quotas, they automatically became eligible for payments. However, each farmer growing wheat must sign up for conservation practices on the mandatory diverted acres.

Price support at a minimum national average of \$2 a bushel, available to those producers in the commercial wheat area who comply with their 1962 farm wheat allotment and who participate in the special wheat stabilization program.

Payments to wheat growers who cooperate in the special 1962 wheat stabilization program for diverting a specified portion of their wheat acreage to conservation uses.

Farm wheat allotments for 1962 which are 10 per cent lower than they would have been under previous legislation.

Marketing quota penalties, at 65 per cent of the May 1, 1962, parity price, on "excess" wheat produced on farms where the farm wheat allotment is not complied with.

**BUTLER Steel Products For FARM or RANCH**

- Cattle Feeders • Auto Bulk Feed Storage Tanks • Water Troughs • Grain Bins • Grain & Feed Augers • Cattle & Machinery Shelters

**BENNINGTON STEEL BUILDING CO.**  
5059 Bryant Phone TU 4-3334

The place to go for—**POWER STEERING REPAIR KITS and HOSES SPECIALIZED SERVICE**

1434 Main Ph. TU 4-5103

**LUMBER SPECIALS!**

4'x8'x3/4"	each	2.50
PEGBOARD 2'x4'x1/2"	each	40c
HARDBOARD 3'x4'x1/2"	each	25c

**Farmer's LUMBER**

BUILDING... PLUMBING and ELECTRICAL SUPPLIES  
7151 South 4th Klamath Falls Phone TU 4-9677

**PARENTS!**

Get wet-weather carpet protection with this clear, flexible plastic film

Even when children come in with dirty boots, your carpets stay clean if they're covered with economical, clear Polyfilm\* (Dow polyethylene film). Just put down a runner of Polyfilm on rainy days to keep mud, dirt and water off expensive carpeting. Polyfilm is tough and flexible, cleans with just a whisk of a damp cloth... and presto it's ready for re-use! Get a handy roll today.

**OTHER HANDY USES**

- ★ Drop cloth for painting
- ★ Frost cover for gardens
- ★ Winter protection for screened porches
- ★ Lining for skating rinks
- ★ Swimming pool covers
- ★ Vapor barrier for under-house crawl spaces

\*Trademark of The Dow Chemical Company

**J. W. KERNS**  
Bob Smith 734 S. 6th, K. F. Jim Kerns

**The Spray Center**  
Nona Green Tulalake Everett Jones

**COUPON**  
Good for 10% OFF on any roll if presented at time of purchase, now thru November 15.

**Ford Trucks Last Longer on the FARM**

See your Farm Truck Headquarters

**BALSIGER MOTOR CO.**  
Main at Esp. Ph. TU 4-3121