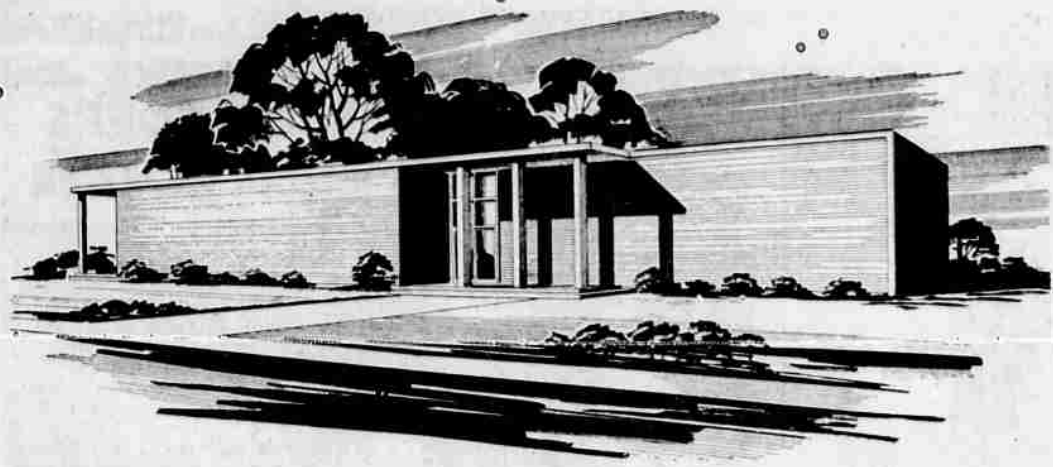


# Council Eyes New Mausoleum



**NEW MAUSOLEUM** — Plans for a mausoleum to be constructed by the city of Klamath Falls for Klamath Memorial Park Cemetery were presented to the city council last Monday night. The structure would look like this architect's sketch and would have 280 crypts.

The city council is considering construction of a 280-crypt mausoleum. No bids have yet been asked, and the recent plans have been taken under study by the council and John Lee, superintendent of cemeteries for the city.

## Job Boost Forecast For State

**SALEM (Special)** — A labor force of 875,100, up 27 per cent over 1960, is forecast for Oregon by 1970 in a 10-year economic study just completed by the Department of Employment and submitted to Gov. Mark O. Hatfield by Commissioner David H. Cameron. The report estimates that there will be 840,100 employed and 35,000 unemployed by 1970 in the state.

Agricultural labor will decrease again during the 1960-70 decade due to automation and increase of larger farms, but non-agricultural employment will show a healthy gain with manufacturing employment gaining 22 per cent. Lumber and wood products employment is estimated to drop 9 per cent by 1970 in a gradual downward trend already started.

Civilian population of Oregon by 1970 is expected to be 2,172,000 compared to the 1960 census of 1,733,000, an increase of 419,000 or more than 19 per cent.

## Ex-Resident Joins Firm

Rex U. Balentine, a former Klamath Falls resident, now is associated with Lenkurt Electric Company, Inc., San Carlos, Calif., as a contracts administrator in the Government Systems Management department.

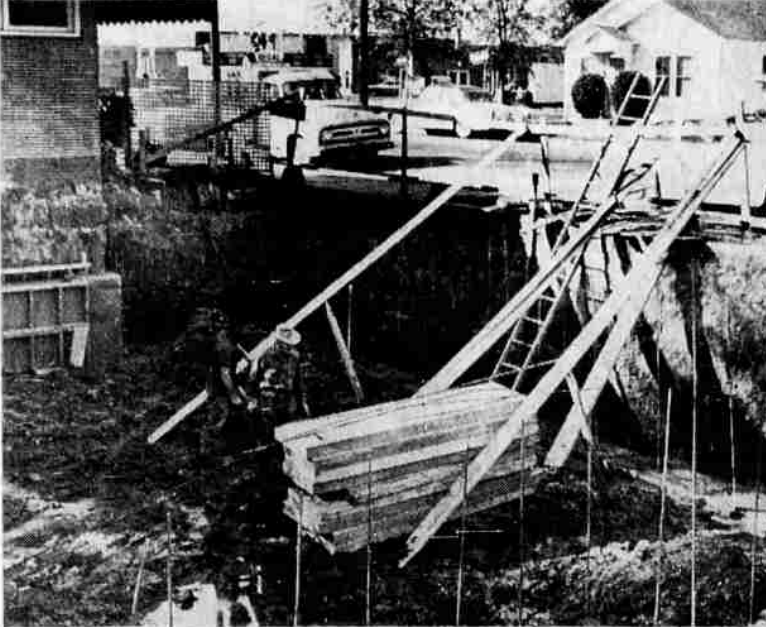
Lenkurt Electric, a subsidiary of General Telephone and Electronics, produces advanced relay and multiplexing equipment for government organizations and commercial telephone companies, railroads, pipelines and other telecommunications users.

Multiplexing is the method of transmitting many messages or data simultaneously over either open wire, cable, or by radio. Balentine joined Lenkurt Electric after several years in contracts administration work with the Lytle Corporation in Albuquerque, N.M., the San Diego area, and at Vandenberg Air Force base. His present address is 782 Coleman Avenue, Menlo Park, Calif. 94025, the report states.

# Business Review

By Floyd L. Wynne

HERALD AND NEWS, Klamath Falls, Oregon Sunday, October 8, 1961 Page 5



**DENTAL CLINIC** — Work is underway on a new dental clinic being constructed at 1435 East Main Street. The Brostehous Construction Company is doing the work. The building is being constructed by Dentists James and Donald Noel, and a third brother, William Noel who is currently attending classes at Foothills Junior College in California. When completed the new facility will provide an additional 1,500 square feet of floor space plus a basement. Added to the present structure, it will provide space for four dentist offices. The approximate cost is \$35,000, and it should be ready for occupancy by Jan. 1. Dr. James Noel began practice in Newport in 1952, coming to Klamath Falls in 1954. His brother, Donald, joined in practice here in 1956.

## Profits Showing Gain Over 1960

**By SAM DAWSON**

**AP Business News Analyst**

**NEW YORK (AP)**—Profits are picking up speed in their six-month climb from their recession low. The bulls hope this foretells a profit explosion.

The bears think the gains will fall short of that. But early returns on the third quarter, now starting to flow in, show average net income after taxes running ahead of the year-ago figure for the first time this year.

Stock traders will watch the profit trend closely, since it reflects both the extent of the business recovery and the success of management in coping with rising costs and with squeezes on profit margins.

The first half of the year, despite a good pickup between the second quarter and the first, showed earnings still trailing 1960.

But early returns for the first nine months indicate that profits should pull even with the year-ago figure. This gives the whole of 1961 a good chance to top the 1960 returns.

The early returns so far are almost exclusively from corporations whose fiscal year ends before the calendar one. Thus the nine months results go back the month or so into 1960 and cover more recession time than will those firms using the calendar year. The recession low commonly is put at March.

But the nonconformists also report a third quarter that doesn't include September when business as a whole usually picks up.

Third quarter returns of 74 corporations reporting so far show 50 of them doing better this year than in the summer months of 1960. Four operated in the red this year, against six a year ago. As a group the 74 report profits of \$138,536,000, compared with \$126,706,000 for the same companies a year ago, or a gain of 9.3 per cent.

These figures exclude the three months report by giant American Telephone & Telegraph. Add these in and you have 75 companies with total profits of \$470,398,000 against \$444,739,000 but the percentage falls to 5.8, since the Bell System was doing a lot better a year ago than were many of the other 74.

Among the other gainers in the third quarter this year were department stores, office equipment, farm equipment and some machinery and tool companies.

The third quarter gains over last year stand out against second quarter results, which still trailed 1960 by 2 per cent, and the first quarter returns, which ran 20 per cent behind the previous year.

Fewer corporations have reported so far on their first nine months. A.T.&T. is among the missing. But of the 52 which have, 29 trail the year-ago figures, and five operated at a loss against three in the previous year. (The nine months results are from largely different group than those reporting for the quarter.)

The 52 reporting at the three-quarter mark of their fiscal year

## Weyerhaeuser Appoints Bush

William L. Bush of San Mateo, Calif., has been appointed director of transportation for Weyerhaeuser Company, it was announced today by Joseph E. Nolan, executive vice president.

Bush's responsibilities will include the former duties of George Shafer, who retired recently as general traffic manager.

For 20 years Bush was employed in traffic work for Standard Oil Company of California. He served as Pacific Northwest traffic manager from 1953 to early 1961, and later at Standard's San Francisco headquarters.



N. C. (Nick) SORICH

## Sorich Gets Sales Post

Appointment of N. C. (Nick) Sorich, 41, as Pacific Division Sales Manager for the Carling Brewing Company, Tacoma, is announced by G. P. (Tommy) Thompson, division marketing director.

As divisional sales manager, Sorich will be responsible for Carling sales activities throughout the 10-state Pacific Division which includes Washington, Oregon, Idaho, Alaska, Arizona, California, Hawaii, Montana, Nevada and Utah.

## Peyton Joins Multiple List

Long-time resident Cal Peyton has joined the multiple listing service, a combined group of the 10 leading real estate offices.

Peyton has been active in the fuel business in Klamath Falls for a half century or more, and recently added real estate sales to his business. Peyton has also built and sold a number of fine homes in this area.

## Beauty Fair

Twenty eight hairdressers from all parts of the Klamath Basin attended an all-day beauty fair in the Town and Country Shopping Center on Sunday, Sept. 24.

Jerry Davidson from the Roseburg Division of Hair Design was here to handle the workshop for the Klamath Falls Unit of the Oregon Beauticians Association.

## IT'S ROSY

**NEW YORK (UPI)** — The business outlook is rosy for the nation's rose growers.

All-American Rose Selections forecasts that Americans will buy a record breaking 50-million roses plants within the next 12 months, pushing sales of general nursery stock above the \$1 billion mark for the second consecutive year.

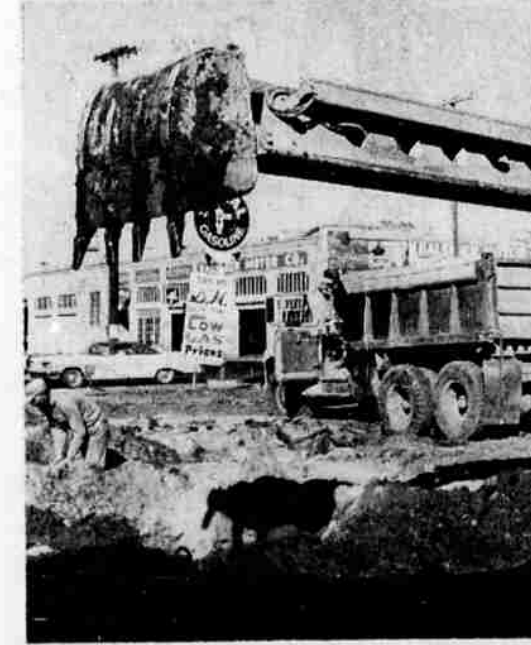
BUILDING PERMITS — KLAMATH FALLS	
9-25-61	1,340 Roofings
9-26-61	500 Remodel Residence
9-28-61	1,000 Remodel Residence
9-28-61	1,300 Remodel Residence
9-28-61	1,970 Roofings
9-27-61	2,350 New Storage Bldg.
9-27-61	40,000 New Warehouse
9-27-61	42,000 New Storage & Off.
9-27-61	114,000 New Store
9-28-61	880 Roofings
10-2-61	4,000 Addition to Res.
TOTAL VALUATION: \$235,210.	

## Examination Date Set For Postmaster's Job

An examination for fourth-class postmaster for the post office at Sprague River, Ore., \$2,234 a year, will be open for acceptance of applications until Oct. 24, 1961, the commission announced today.

Applicants must actually reside within the territory supplied by the above-mentioned post office and they must have reached their 18th birthday on the closing date for acceptance of applications. There is no maximum age limit. However, persons who have passed the age of 70 may be considered only for temporary renewable appointments of one year.

Complete information about the examination requirements and instructions for filing applications may be obtained at the post office for which this examination is being announced. Application forms must be filled with the U.S. Civil Service Commission, Washington 25, D.C., and must be received or postmarked not later than the closing date.



**NEW STATION** — A new service station will soon arise on this former location of a Signal Station at Main and Broad streets. Everything is being torn out and a completely new facility constructed at an estimated cost of about \$40,000. The work is being done by the Endicott Construction Company of Albany, general contractor, with all sub contracts being local. The new station will feature all service station facilities plus such additional features as wheel balancing and a complete line of allied merchandise. It should be ready for occupancy about Dec. 1. An operator of the new station will be selected in the near future, Signal officials indicated.

## British Interest Cut Triggers Gold Worries

**NEW YORK (AP)**—The cut in British interest rates this week coincides with renewed worries about the flow of short-term investment funds—and some gold—from U.S. shores.

The cut in London should help discourage any new rush such as the outflow of dollars and gold that a year ago caused doubts, quickly discounted, about the soundness of the U.S. dollar.

Some investment money has been going to London from the United States, New York bankers have reported in recent weeks. And in the last week the U.S. gold supply has dipped after a period of relative stability.

The price of gold on the London free market has risen and now stands 18 1/2 cents above the U.S. Treasury official rate of \$35 an ounce.

The reason for the outflow of funds is that the British raised the Bank of England rate to 7 per cent July 25 from 5 1/2 per cent because the pound sterling was in trouble. The Federal Reserve Bank discount rate was then, and still is, 3 per cent.

The spread between the two bank rates carries over into short-term securities. Recently British treasury bills have been yielding 6 1/2 per cent, while the yield on like U.S. securities has ranged from 2 1/2 to 3 per cent. The official bank rates set the pattern.

Emily Dickinson wrote nearly 3,000 short poems, only three of which were published while she lived.



LEE R. HANSEN

## PPL Selects Agronomist

Plans to expand the special services provided agricultural area customers of the Pacific Power & Light Company system were reported Wednesday along with the appointment of an agronomist to the company's general office sales organization.

Lee R. Hansen, a former assistant professor of agronomy at Oregon State University and recently associated with agricultural chemical firms, will be working closely with the company's district managers on electric supply utilization by ranch and farm customers, according to Frank Reis, PPL's general sales manager.

Reis reported Hansen also will work with Cecil Root, Albany, the director of PPL's rural services, who is widely known throughout Oregon for his leadership in 4-H Club work during the past quarter-century.

Hansen has a degree in the science of field crop production and soil management from the University of Nebraska, and holds a master's degree in agronomy from OSU. He was an assistant professor at OSU from 1937 until 1942.

Prior to joining PPL's rural services staff he was manager for agricultural-chemical sales for Great Western Chemical Co. and the L. H. Butcher Co., both Portland, and associated in similar sales work with other firms.

## Rolltop Desk Vanishes In World Of Machines

**NEW YORK (UPI)**—Whatever became of the rolltop desk? Copies of an original as it emerges from a typewriter—and the typewriter itself is undergoing changes in appearance and in action. The "special report" notes that copying machine sales were a little more than \$170 million three years ago, last year nearly \$20 million more, this year might be at a quarter-billion dollars.

Automatic stapler — Automatic staplers, to replace the old hand ones which gave a stapling operation the occasional motif of pounding drums.

Postage machines, which seal letters, stamp them, and stack them up.

Accounting machines — which may store the answers and give a permanent record in case they were needed for computer use later.

Information retrieval systems in the form of microfilm files; new and special filing cabinets, others operable at the touch of a button.

The computers and their attendant systems: For feeding information, for taking it out and sending it elsewhere, for making the fullest use of the capabilities of the machine.

Interoffice communication systems, internal TV, recorders rather than clerks for taking orders. Not much room left for the rolltop.

**WORDS, WORDS, WORDS**

**NEW YORK (UPI)**—The speech-making business is in a boom, the Pharmaceutical Manufacturers Association finds — and no wonder. The publication, Medicine at Work, says there are now 16,000 women's clubs, 4,000 chambers of commerce, 12,000 trade associations, and many tens of thousands of other organizations boosting the demand for oratory.

Among the unusual names of towns in New Mexico are Leco Hills, Pep, Lango, Pie Town, Rosebud and High Lonesome.

SEE US FOR ALL TYPES

### COMMERCIAL PRINTING

We pride ourselves on our dependability on our quality work, and our service.

Specializing in all types of printed folders, circulars, letterheads, checks, statements, snap-out forms, plastic binding, etc.

Top quality jobs. Work guaranteed.

Let Us Supply You With Whatever Forms You Need

## Guide Printing, Inc.

1205 Klamath Ave. Phone TU 4-5373

Make Reservations Now

for the Herald & News Sponsored Tour to the SHRINE EAST-WEST GAME and a Winter HAWAIIAN HOLIDAY

12 Glorious Days Starting Dec. 29 Only \$589.50

McIntyre Travel Service  
719 Main St., Klamath Falls, Ore.  
Please send brochure giving complete information on the H&N HAWAIIAN HOLIDAY

To \_\_\_\_\_  
Address \_\_\_\_\_

1434 Main St. - Klamath Falls Ph. 4-5103

The Place to Go For

## MAGNETO SERVICE

★ REPAIR ★ EXCHANGE

ALL MAKES!

AUTHORIZED FACTORY SERVICE ON

★ BOSCH ★ EISEMAN  
★ FAIRBANKS-MORSE  
★ WICO ★ BENDIX