

Table with weather forecast for Klamath Falls and vicinity, including temperature and precipitation data.

Gerald and News

Northern California - Fair to day and tonight; cloudy Wednesday with rain north of Eureka by tonight; warmer in north tonight.

Mt. Shasta-Siskiyou area - Fair today; cloudy tonight; rain likely Wednesday with snow above 4,000 feet; warmer.

Price Ten Cents-12 Pages

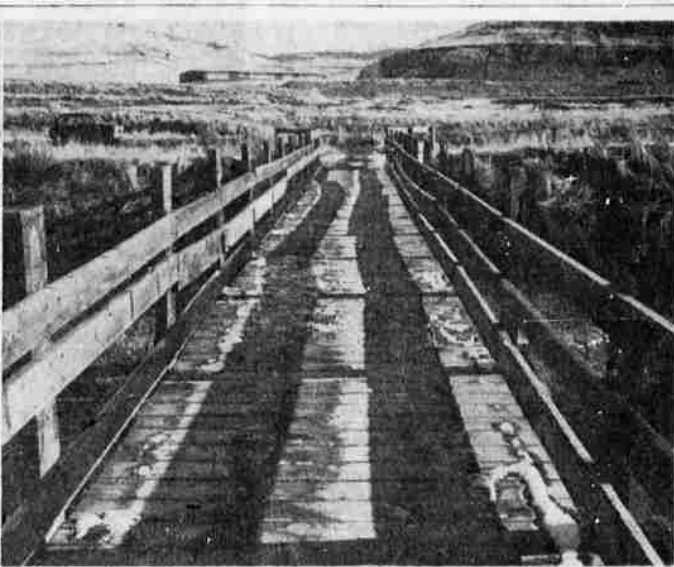
KLAMATH FALLS, OREGON, TUESDAY, MARCH 7, 1961

Telephone TU 4-8111 No. 6628

New UN Forces Dispatched To Leopoldville



THESE TWO ITEMS were prominent in discussions of the city council Monday night. At left is a building owned by Milt Sessler and located at the end of Watland Avenue adjacent to the railroad. The council amended its move to condemn the building and instead ordered Sessler merely to make the building secure against burns or children. It had been declared abandoned, dilapidated and a fire hazard by the building in-



spector and the fire inspector. At right is the footbridge that spans the A Canal in the vicinity of Alameda. It is used by children going to Ponderosa School which can be seen in background. The council instructed the Bureau of Reclamation to have the bridge torn down or repaired immediately.

Sudan President Pulls Out Forces; American Task Force Turned Back

WASHINGTON (AP) - The United States called off the sending of a naval task force to the Congo area today after being informed that the United Nations did not need the force. The Navy announced that the four ships which had been heading toward the Congo since Monday were turned around this morning because "their presence is not required by the U.N. in Congo waters." Four ships - including a destroyer and two landing ship transports with 500 Marines aboard - were ordered Sunday night to change course as they were headed for a goodwill visit to Cape Town. They were instructed instead to head for the Gulf of Guinea, off the Congo. One other destroyer proceeded on toward Cape Town. But this morning, the Navy said the four ships had been "ordered to reverse course and continue the goodwill visit to South African ports."

Liz Taylor Medics Still Holding Hope

LONDON (AP) - Seven doctors held an urgent conference today at the bedside of Elizabeth Taylor and a friend said later "there's still hope." The doctors made no statement on emerging from the room where the beautiful 29-year-old film star is fighting for her life against double pneumonia. "While her condition is still very critical, there's no reason at the moment for any fresh despondency," said the friend, Suzanne Cardozo. "The doctors believe she's maintaining at least a little of the improvement she showed this morning."

Canal Footbridge Branded Unsafe

A footbridge that spans the A Canal from Division Street to Alameda was labeled as unsafe and dangerous for children at the regular Monday night meeting of the city council. City Manager G. S. Vergeer informed the council that the hand-rail of the bridge had been torn off by vandals and the underpinnings of the bridge were bad. He stated that it was a decided hazard for the children that now cross over it to reach Ponderosa School. Vergeer stated that he had studied the history of the bridge and determined that it was constructed by the federal government in 1945 at a time when the area was used for federal housing and access was desired to the Mills Addition area. He reported that Oregon Tech took over the bridge in 1958 with the housing.

Kennedy In Firm Stand On Schools

WASHINGTON (UPI) - President Kennedy today stood firm on his insistence that federal aid to parochial and private elementary and secondary schools would be unconstitutional even though a congressional leader has come out against him on the issue. The President's stand was reported by Senate Democratic Leader Mike Mansfield after Kennedy's weekly breakfast meeting with Democratic congressional leaders. A newsman asked Mansfield if Kennedy had expressed any concern over the fate of his aid-to-education program in view of the controversy over whether parochial and private schools should be included along with public institutions. "His position remains the same," Mansfield said. He added that the question had been discussed at the meeting.

Liberals Hit Selection

WASHINGTON (AP) - Liberals open fire today on President Kennedy's nomination of Charles M. Meriwether of Alabama as a director of the Export-Import Bank. There was every sign that Meriwether would be confirmed, possibly without a roll call vote. But senators of both parties asked for time to speak against him. Sen. Wayne Morse, D-Ore., said he had notified Kennedy of his intention of opposing confirmation. Sens. William Proxmire, D-Wis., and Jacob K. Javits, R-N.Y., planned speeches critical of Meriwether.

Farming Population At Civil War Level

WASHINGTON (UPI) - The government has estimated U. S. farm population totaled only about 15,635,000 in April 1960 - about the same as it was during the Civil War. The estimate, showing 1960 farm population down to a record low 8.7 per cent of the national total, was released simultaneously by the Agriculture Department and the Census Bureau Monday. The Agriculture Department at the same time estimated 1960 net farm income at \$11.6 billion, up about 3 per cent from 1959. The new population estimate chops about 25 per cent from previous government estimates of farm population. If figures had been prepared with methods used in the past, the 1960 farm population would have been shown at about 29.8 million, or about 11.3 per cent of the total population. In the past, persons were listed as farm residents if they told census takers they lived on farms. The Agriculture Department said this led to the listing of millions of persons who lived in rural sections but were not really farmers. The new plan counts only persons living on places which the bureau classifies as farms. In addition to dropping persons who do not farm at all, this also excludes those on very small "farms" which do not produce enough to be officially classed as farms under a new census bureau definition. The bureau's adoption of a tightened "farm" definition in the 1959 Agricultural census excluded some 232,000 plots of 10 acres or less previously counted in farm statistics. Even if the old population estimating method had been used, it would still have produced the lowest estimate since government records were started in 1910. Farm population reached a record high of about 32 million in about 1916, Agriculture Department officials said, and has been declining ever since. The drop has been especially rapid in recent years as farms have become bigger, fewer and more highly mechanized. The Agriculture Department also estimated that net income for the average American farm resident in 1960 was \$966, up slightly from the 1959 figure of \$965. Income per farm rose about 5 per cent - \$3,240 for each farm counted in the 1959 agricultural census. USDA says realized gross farm income rose to an estimated \$37.9 billion in 1960, up more than \$400 million from 1959. This figure includes cash receipts from farm marketings, payments from the government, and the rental value of farm homes plus the value of foods consumed on the farm. The value of home-produced foods declined about 8 per cent during 1960. The Agriculture Department report says farm inventories rose in 1960 for the fourth successive year. Preliminary reports indicated that the value of crops, livestock, and other items in farm inventories increased \$355 million last year.

Mark Battles Budget Cuts

SALEM (AP) - Gov. Mark O. Hatfield said Monday that a legislative Ways and Means subcommittee was guilty of "irresponsible fiscal procedure" in ordering an 18 per cent reduction in the Department of Agriculture's budget. He said it was not sound fiscal procedure "to demand certain cuts without indicating where they should be made or without providing any measurement for making them." Hatfield added that he was surprised that the subcommittee's chairman, Sen. Francis Ziegler, R-Corvallis, would order the cuts, in view of the fact that Ziegler was chairman of the Legislative Interim Committee on Agriculture. "I refuse to have any of our agencies be a party to this irresponsible fiscal procedure," Hatfield said. The reduction amounts to \$500,000 for the biennium. Hatfield took a slap at the press for playing up charges against Chancellor John R. Richards of the state System of Higher Education. These charges, dealing with Richards' activities on behalf of the United Nations, were made at a Senate Education Committee. Hatfield said they were wild charges and that the press was not fulfilling its responsibility in publishing them. He said that, at this stage, he and Washington's Gov. Rosellini are opposed to a move by which California would obtain Bonneville power. Hatfield said they would remain opposed until there was some guarantee that Oregon would have its power needs filled before power is exported to California. "Any kind of an intertie," he said, "should not leave Oregon without a power supply. Oregon does not want to be just a bridge for delivery of power and be left out."

Mark Battles Budget Cuts

Chancellor John R. Richards of the state System of Higher Education. These charges, dealing with Richards' activities on behalf of the United Nations, were made at a Senate Education Committee. Hatfield said they were wild charges and that the press was not fulfilling its responsibility in publishing them. He said that, at this stage, he and Washington's Gov. Rosellini are opposed to a move by which California would obtain Bonneville power. Hatfield said they would remain opposed until there was some guarantee that Oregon would have its power needs filled before power is exported to California. "Any kind of an intertie," he said, "should not leave Oregon without a power supply. Oregon does not want to be just a bridge for delivery of power and be left out."

Burglars Steal Only Exercise

SAN ANTONIO, Tex. (AP) - Burglars who broke into a junior high school here didn't get any loot, but police say they got a lot of exercise. Police said burglars removed a skylight and dropped into a restroom, only to find an inside door locked. They crawled back out, scaled a porch, jumped to a gymnasium roof, forced open another skylight, climbed to a basketball backboard and dropped into the gym. They didn't find anything worth stealing, so they played basketball while and left.

Committee Okays Reapportioning Bill

LEOPOLDVILLE, The Congo (AP) - Reinforcement for the United Nations garrison began arriving in Leopoldville today after Sudanese U.N. soldiers in a humiliating defeat were forced out of the vital port of Matadi by the Congolese army. Arrival of the troops coincided with Sudan's announcement that it is withdrawing its 400 men from the U.N. force in the Congo. Sudanese President Ibrahim Abboud accused the U.N. Command of carelessly deploying the Sudanese contingent at Matadi and failing to provide proper reinforcements for the outnumbered garrison. The United Nations is trying to negotiate its way back into the port city down the Congo River, and the reinforcements bolstered its negotiating position. Emergency arrangements were made to airlift 600 soldiers from Tunisia to the Congo Wednesday. A U.N. spokesman said theanguard of 3,000 soldiers India is sending probably will arrive within a week. The United Nations called up its reinforcements after a week-end of bitter street fighting between U.N. and Congolese soldiers in Matadi ended with the surrender of the 135-man Sudanese garrison. A U.N. spokesman reiterated the U.N. intention to put its soldiers back into Matadi. The United Nations has about 16,000 soldiers in the Congo. A cease-fire hung over the key port while negotiations proceeded for the return of the U.N. forces. The Congolese defiantly demanded that they be consulted on the nationality of the U.N. troops sent there. A U.N. spokesman warned that "if the United Nations fail to get back by peaceful means, it is empowered to use force as a last resort if necessary." Five men of a Danish supply unit were the only U.N. personnel remaining in Matadi following the surrender and evacuation of the 135-man Sudanese garrison and a nine-member Canadian communications unit Sunday. The withdrawal came after more than 24 hours of battle in which two Sudanese were killed and 13 wounded. Twelve Sudanese were missing. The withdrawal of the Sudanese, announced on the eve of resumption of the U. N. General Assembly's 15th session, dealt a blow to Dag Hammarskjold. The secretary-general has been making strenuous efforts to build up the U. N. Congo forces and appeared making some progress, with India offering 3,000 combat troops. Abboud, in pulling out his Sudanese contingent, charged "United Nations decisions were vague, weak and helped to spread disorder." Amid the continuing military and political confusion, the U. N. headquarters reported one success. It said the emergency airlift of food to hundreds of thousands of refugees in South Khasi Province had cut the famine death rate 75 per cent and the worst was over.

Four Killed Near Drain

DRAIN (AP) - An automobile carrying four young men from Cottage Grove skidded on the wet pavement near here early today, left the highway and plunged into a creek. All four died. It was the worst single accident traffic toll in Oregon since the seven members of the Howard Lemon family died in a plunge into a roadside lake southeast of Eugene Nov. 1. Those who died in today's accident were identified by state police as: Robert H. Peters, 21, the driver; Wesley N. Johnson, 21; Michael W. Snell, 19; and Gary L. Glass, 18. The car was westbound on Highway 33, police said, and it plunged into the creek just a half mile from the intersection with Highway 90, northeast of Drain. The car submerged in the creek. It later was taken out and the bodies recovered. The deaths raised the March highway toll in Oregon to 8, and the year's to 68 in the Associated Press tabulation.

Kite Record

BLOOMINGTON, Ind. (AP) - Somebody must have told the boys of Sigma Alpha Mu fraternity at Indiana University to go fly a kite. They have flown their kite 600 feet high. And they plan to keep it up there to set an endurance record for any other fraternity to shoot at.

See You In Siberia

MOSCOW (AP) - Premier Khrushchev today invited U.S. Ambassador Llewellyn Thompson to meet him in Siberia Wednesday to deliver a personal message from President Kennedy. Embassy sources said Thompson will fly to Siberia Wednesday but declined to disclose his exact destination. It is assumed he will meet the Soviet premier in Novosibirsk for exploratory talks on improving Soviet-American relations. This is where Khrushchev has been busy with an agricultural meeting. It is the same town that former Vice President Richard M. Nixon toured two years ago.

Bosses Told Jaycee Role

O. W. "Corky" Corbett of Burns, one of the National Junior Chamber of Commerce's 10 vice presidents, was the featured speaker during the annual "Bosses Night" dinner sponsored by the Klamath Jaycees in the Winema Hotel Monday night. Corbett, elected at St. Louis last June, told the assembly of about 40 Jaycees and their employers and guests of the Jaycees' role in introducing young men to community leadership. Awards for service to the organization were presented to Radio KLAB, Television KOTI and the Herald and News during the evening. A film concerning the Jaycee movement in Oregon was shown.

Holdup Victim

LOUISVILLE, Ky. (AP) - Lawrence Kerr, a policeman who has a second job as assistant manager of a neighborhood theater, was a bit red-faced today. He was held up for \$521.



JAYCEES AND THEIR BOSSES gathered congenially Monday night at the Winema Hotel for the annual Jaycees "Bosses Night" dinner. The men are, from left, Corky Corbett, Burns, National Jaycees vice president, the speaker; Les Offield, manager of a local bank; Hal Loible, a Jaycee and Offield's employe; John Hailbronner, club president, and Greer Drew, past Jaycee.