

CORNER of hardboard paneling reinforces and projects the sound coming from this high-fidelity set throughout the room. The good looking acoustical ceiling tile plus carpeting and furniture absorb excessive reverberation that could feed back and interfere with later tones.

Reversing Time? Yes, Says Prof

NORMAN, Okla. (UPI) — A times and were carried down to the days of the feudal princes," Ezell said. "Merchants of Europe used lotteries to encourage sales of merchandise. Venice later created a government monopoly in lotteries and derived considerable revenue from the scheme.

"The lottery had a long career before and during the early colonization of America, and was the stepchild of English parents." Ezell said the Continental Congress started a \$1 million lottery to help finance the American Revolution, and that several colleges received aid from lottery proceeds, including King's College (Columbia), Harvard, Yale and Princeton.

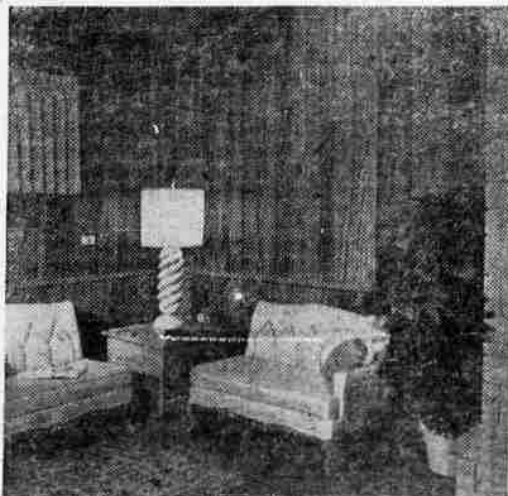
Brucellosis Found In Local Cattle

Six reactors were found in three of the 12 herds of cattle tested for brucellosis in Klamath County in January by state and federal veterinarians, according to the State Department of Agriculture.

There were 250 cattle tested and four suspects found in these same herds. On Feb. 1, three herds in Klamath County were under state quarantine for brucellosis. Most infection found was in prior known quarantined herds locally as well as statewide.

Vaccination was reported at a satisfactory level. Statewide 21,158 calves were vaccinated in 1,111 herds for the month and 18,500 cattle tested in 1,246 herds with reactors at less than six tenths of one per cent.

As of Feb. 1, there were 62 herds of cattle under quarantine for brucellosis in eastern Oregon and 13 in western Oregon. This is a decrease of eight herds in eastern Oregon and seven in western Oregon compared to the number under quarantine Jan. 1.



THE ORIENTAL SPLENDOR of teak comes to modern homes now in the form of wall paneling. According to the Fine Hardwoods Association, teak is one of the heaviest woods in the world, and yields to veneering, making it possible to use it for paneling without excessive weight or cost.

Let's Look Into Handy Man's Problem

Newspaper Enterprise Assn.

So long as the weather is cold it really doesn't matter that one of the windows may have a broken sash cord. But although there is no pressure to repair it, it's something you ought to do before warmer temperatures arrive and an open window is wanted.

You'll need a chisel and a screw driver to do the work, plus a length of new sash cord. You may want to invest in sash chain instead which is more expensive but will last indefinitely.

The chain is often sold in kit form with hooks and special wire spirals that look like short springs. The spirals keep the chain in place, serve where knots would be used in sash cord.

Start by prying off the sash molding (sometimes called sash head or stop strip) with a chisel. Work carefully from the bottom up. Loosen the molding enough so that you can get a good grip on it before prying it loose.

With the molding off, lift the window sash from the frame and move it out part way. But don't pull it all the way out. A part of the sash cord is fastened to the window by way of a knot at the end that remains in the knot pocket. This is a hole in the edge of the sash running from the end of the sash cord groove and opening out on the surface of the sash below the groove. Note how large a knot is required to keep the cord from pulling through.

Next you will have to get at the sash weight. This is enclosed inside a pocket at the bottom of the frame. Remove the wood wedge that covers it. This is generally held with screws. The wedge may need prying out. Take out the weight and remove the other end of the old cord.

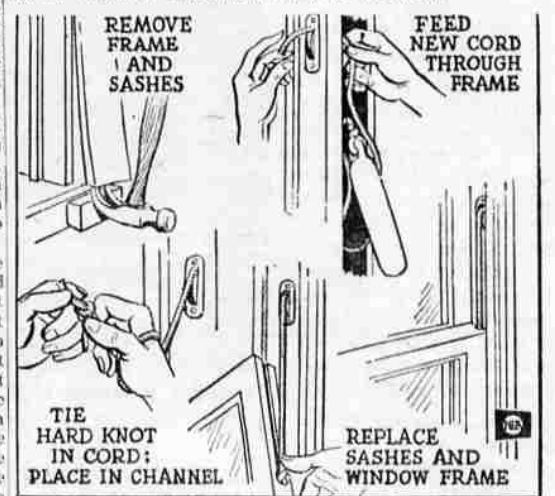
While everything is apart, lubricate the pulley with a little oil. Sand rough spots on the edge of the sash and coat with linseed oil. Use paraffin on the cord before it's installed.

Thread the new cord over and through the pulley, knotting one end so it doesn't fall through. If the cord isn't stiff enough to push

through, fasten a weight at the end—sinker, nail or screen—and remove it later.

Once the cord is through, tie the end to the sash weight, put the weight back in the pocket and re-fasten the pocket cover.

Cord Length
Put the sash back on the window sill and pull the rope so that the weight travels as high as it can go, right up to the pulley. Extend the cord down along the sash so that it goes about three inches beyond the hole in which the knot will fit.



Replacing a broken sash cord.

Workers' Prayer

Dear Lord, Give me a supervisor who understands.
One who looks at me as an honest man.
One who knows I've got feelings and pride.
And joys and trouble that go side by side.
For a man like that, I'll work all day;
By deed and act I'll earn my pay.
The clock's no problem, the wage no sin;
Show me the work . . . let me begin.
But Lord, give me a supervisor who understands.

A good sound thinker, a maker of plans.
Not a genius . . . may not so, But a man who can smile and say hello.
For him I'll work . . . I'll sweat and strain;
I'll conquer the task regardless of pain.
If he shows he cares if he trusts men, too
I'll not let him down, I'll see it through.
But Lord, I'm just a worker, a common man;
Please Lord, give me a supervisor who understands.

ELEPHANT BRAND FERTILIZER PAID FOR THIS TRUCK



This is an example of what can be bought with profits from the use of fertilizer. With Elephant Brand you grow more so you lower the production cost of each crop unit (each bushel, pound or ton).

Whether you grow small grains, coarse grains, row crops or fruit — raise beef cattle or dairy herds — if you can lower the cost per unit of your cash crop or your forage you will make more money. Lower unit cost is the key to more profitable farming. There is no surer way to lower unit costs than by using Elephant Brand.

When you fertilize with Elephant Brand you can make more in three

ways: first, you get better grade crops which sell for higher prices; second, bigger yields give you more to sell and third, you get greater profit from each crop unit of whatever you grow.

GET A BIGGER PROFIT "SLICE"



WITHOUT FERTILIZER WITH FERTILIZER.

Think of this "pie" as the money you get for every crop unit you grow. The darkened portion is your profit. Fertilizer helps you get a bigger profit "slice".

ELEPHANT BRAND PLUS VALUES

- A wide range of plant food ratios • Uniform-sized — free flowing — pelletized products
- All fertilizers highly water soluble • Strong, weather-resistant, non-slip bags
- Extensive warehouse system for fast dealer service

IT PAYS TO CHOOSE FROM THE ELEPHANT BRAND LINE

NITRAPRILLS (33.5-0-0)	16-20-0	11-48-0	AMMONIUM SULPHATE (21-0-0)
13-39-0	16-48-0	23-23-0	24-20-0
8-32-16	10-30-10	13-13-13	14-14-7
			UREA (45-0-0)



Elephant Brand water soluble FERTILIZERS

GET MORE FROM YOUR LAND WITH ELEPHANT BRAND

COMINCO PRODUCTS, INC., SPOKANE, WASHINGTON
EXCLUSIVE U.S. SALES AGENTS FOR ELEPHANT BRAND FERTILIZERS: BALFOUR, GUTHRIE & CO. LIMITED
SAN FRANCISCO — LOS ANGELES — SEATTLE — PORTLAND — SPOKANE — MINNEAPOLIS