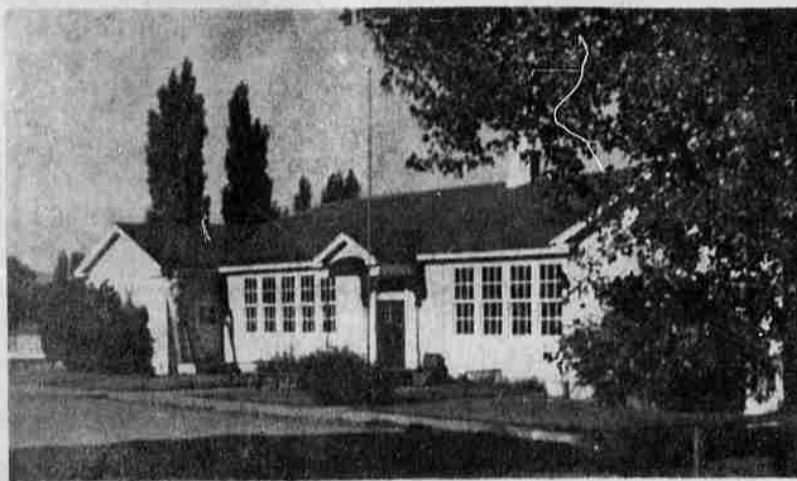


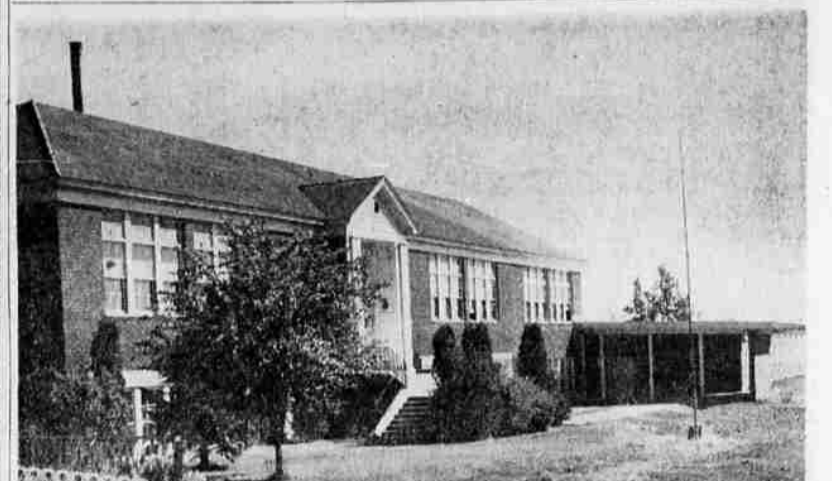
Where School Bells Ring



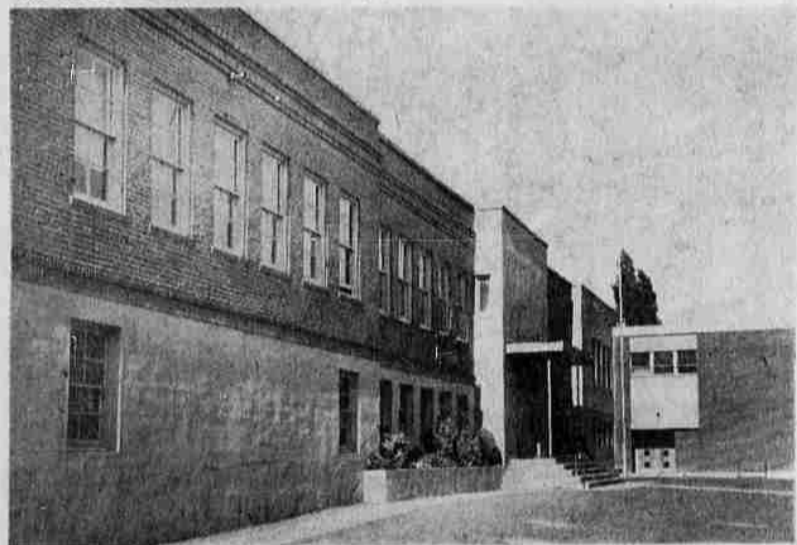
ALTAMONT Elementary School was named for one of the area's greatest race horses. This school was erected in 1926. 309 pupils enrolled for 1960.



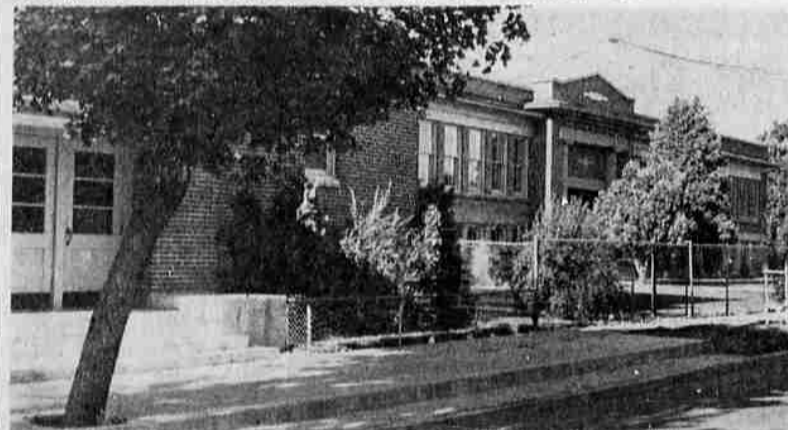
CONGER SCHOOL was named for an early settler, Joseph Conger. When he died, his estate of \$13,000 went for school purposes. The original building was erected in 1929 and has had several additions since then. 1960 enrollment was 214 students.



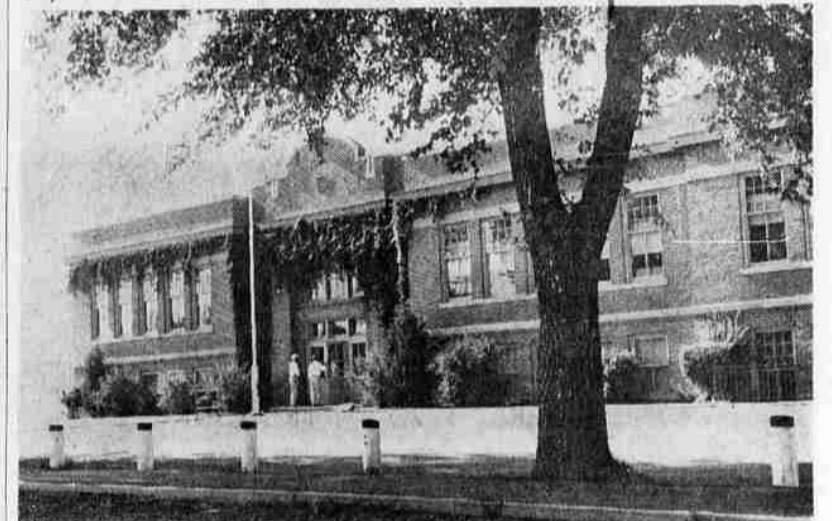
FAIRHAVEN School first opened in 1929. When first used, it had six classrooms and only three were in use. Later other small schools were incorporated into this one.



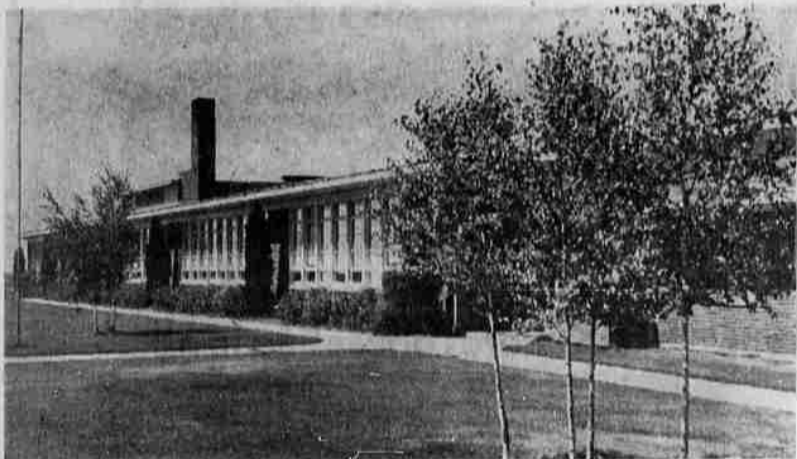
FAIRVIEW School was begun in 1920 with four classrooms and a number of additions have been made. In addition an auditorium was added in 1928, a gymnasium in 1931 and later additions in 1953. The 1960 enrollment at Fairview was 383.



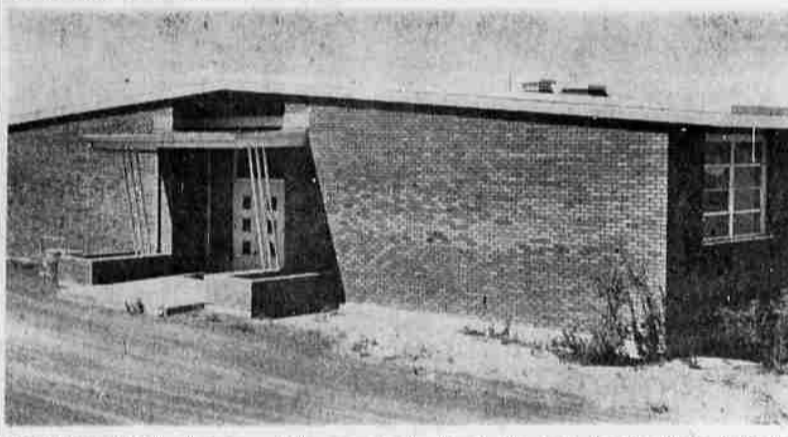
MILLS SCHOOL is Klamath's largest elementary school. It's also one of the city's oldest schools. It was opened in the present building in 1919 with four classrooms. Other additions have been made including the new auditorium which was added in 1949. Mills enrollment in 1960 was 523 students.



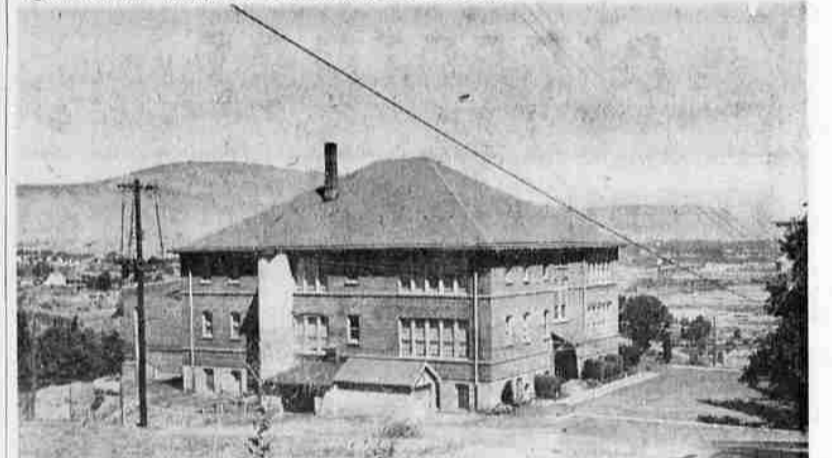
PELICAN School began as a two room school in 1920, reconstructed in 1921 and again in 1931. Today, the school handles 208 students.



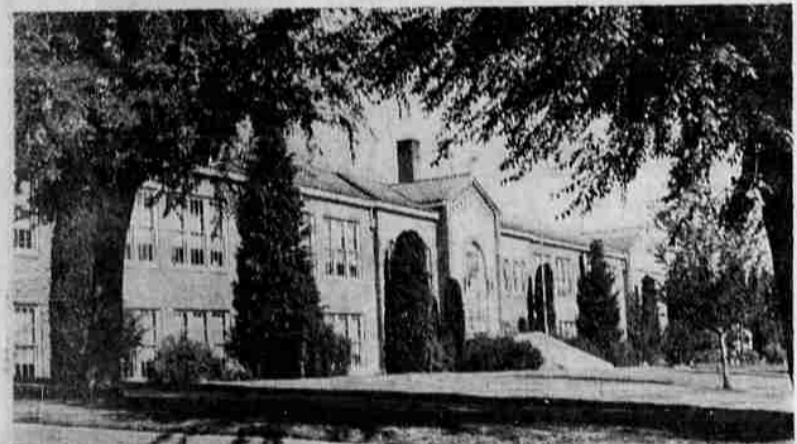
PETERSON School, built in 1949, was named in honor of Fred Peterson, long-time Klamath County superintendent of schools, who later lost his life when a crazed welfare recipient shot down three members of the welfare board. Two other members of the board were badly wounded, but recovered. 462 pupils enrolled in 1960.



PONDEROSA School is one of the newest schools of the area, having been built in 1956. At present, it houses five classrooms and a cafeteria and currently takes care of the first grade of Mills School. It was designed however to eventually be a junior high school. Enrollment in 1960 was 119 students.



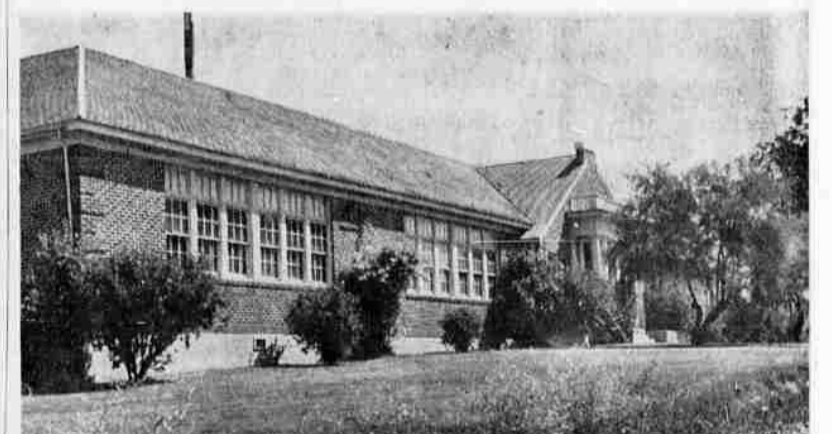
RIVERSIDE School is the dean of all the elementary schools now operating in the area. The school was constructed and opened in 1910. A consistent remodeling program, however, has kept the structure in fine condition and it gives excellent service today. 1960 enrollment was 217 pupils.



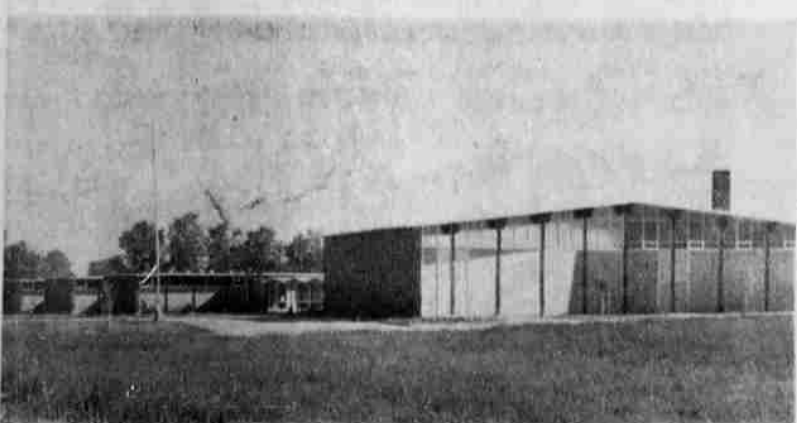
ROOSEVELT School was named for Theodore Roosevelt and is Spanish architecture in style. Opened in 1929, this building offers complete facilities for the seven grades it houses. Recently, a hot water well was added to provide more economical heat for the building. Enrollment in 1960 was 409.



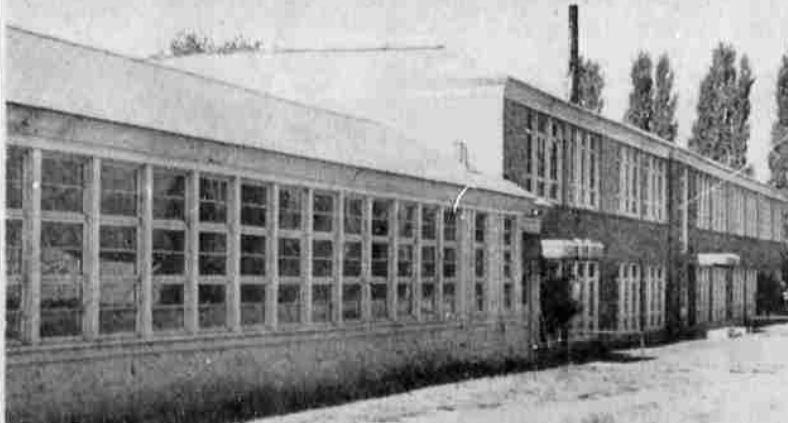
SACRED HEART ACADEMY was constructed in 1917. For a time it housed both grade and high school, but a new high school was recently constructed adjoining this building. Current enrollment is 371 elementary students and 150 high school pupils.



SHASTA School was constructed in the suburban section of the Klamath Falls area in 1935. Today it takes care of the educational needs of 311 students.



STEARNS School was named in memory of Orson A. Stearns, early settler of this area. Stearns was with the Army in service at Fort Klamath, and he and a partner moved into the area in 1867 upon leaving the service establishing a homestead in the area. The school was opened in 1959 and is one of the newest in the area. The 1960 enrollment was 329 pupils.



ALTAMONT JUNIOR HIGH is the other junior high in the vicinity of Klamath Falls. At one time, this junior high building was occupied by grade school classes. Today, Altamont Junior High handles 476 students of both seventh and eighth grade classes.



FREMONT School houses both the eighth grade and primary classes. It was constructed in 1925 to replace the old Central School. It was named for General John C. Fremont, famous explorer, who visited the vicinity of Klamath Falls in 1853 and again in 1856 on exploring expeditions. The school handles 45 in the primary and 335 eighth graders.