

Citizenship, Character, Fitness Aims Of Scouts



SOUTH AMERICA was the project theme for January for Cub Scouts of the Modoc Council, so these cubs of Den 5, Pack 3, sponsored by Roosevelt School, built a relief map of the continent during a meeting at the home of their leader, Mrs. Frank Johnson. The cubs are, from left, Rusty Robinson, Gary Murray, Tom Stockebrand, Ray Johnson and Hugh Currin.

While having fun, Boy Scouts become scouts. They begin as cubs, a "home centered" program in which parents participate. A well-developed achievement system keeps them interested.

A total of 3,100 Cub Scouts, Boy Scouts and Explorer Scouts were served by the seven-county Modoc Area Council during 1960 with headquarters in Klamath Falls, and Council Executive Merton Mathewson says he hopes to see 4,000 boys enrolled in scouting during 1961.

Attracting that number of boys may be less difficult than financing their scouting activities. Mathewson says \$13 is required to keep a boy in scouting per year in the council.

Funds come annually from the county United Fund, from the scouts' "sustaining membership" campaign and from parents of the boys.

This year's United Fund donation fell short of the goal, and headquarters will have to find other financial channels to accommodate all interested boys.

Mathewson is confident that money will be forthcoming from other areas.

Boys eight through high school age and beyond are eligible to

become scouts. They begin as cubs, a "home centered" program in which parents participate. A well-developed achievement system keeps them interested.

At 11, the boys are graduated into scouting as tenderfeet. They become more self-reliant and participate in many activities—especially camping—during which they learn a variety of skills.

The explorer program for youths of high school age is tailored very exactly to that age-level. Explorers, under a carefully revamped program, specialize in the areas of knowledge that interest them.

Locally, the explorer program soon will include a unit of Sea Scouts, sponsored by the Klamath Falls Naval Reserve group.

Other developments in the council include prospective improvements of some facilities at the scouts' Camp Makualla at Crescent Lake.

In their quest for new members, council officials ask qualified lodges, clubs, churches and other organizations, such as Parent Teacher Associations, to call the Boy Scout service center, TU 2-4611, for information.



LISTON AIRCRAFT AND Farmer's Air Service

Providing important aviation services to the growing Klamath Basin

Liston Aircraft and Farmer's Air Service now offer the only complete aviation services in the Klamath Basin. Farmer's Air Service, started in 1947, as an agricultural air service, combined with Liston Aircraft in 1955 to offer a complete air program for the people of the Klamath Basin. The 2 combined companies now employ up to 22 people offering Cessna sales and service; Air Ambulance Service; Air Taxi and Charter Service; Crop Dusting and Spraying; Flying Instruction; Repairs and Service on all aircraft and Fire Patrol for various forest agencies.



An air view of one of the Cessnas used in student training. More and more people are learning to fly for both business and pleasure. Flying the new Cessna is much like driving your car.



Some of the service work being done in our complete shop. This big hanger has over 600,000 sq. ft. of floor space for aircraft storage, plus shops and offices.



One of the big PBV's used for fire control work. Fire control, and fire patrol in the summer months, have become an important part of the work at Liston. These big planes helped tremendously in saving many acres of our valuable forests last year. These PBV's are also equipped for forest spraying and are used throughout the United States and Canada.

Klamath Falls Airport

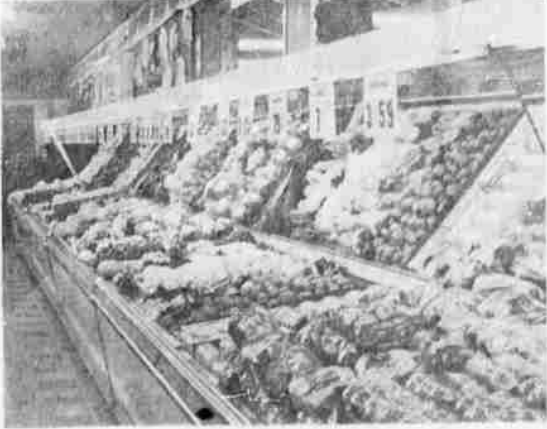
Phone TU 4-5580



DEVOTION TO THEIR COUNTRY is one of the first virtues a Boy Scout learns. These boys are members of Troop 100, sponsored by Peterson School Parent and Patron Association.



53 years ago, when Manager Emil Albrecht, started in the grocery business, it would have been impossible for any grocery store of that day to serve 400,000 customers in one year. Since that time thousands of new items, plus many conveniences have made it possible for the homemaker to do her complete week's shopping in a matter of minutes. New prepared foods, new packaging methods, new "instant" foods all close at hand during a quick trip through Low Cost, simplify the job of preparing 1095 meals a year. Low Cost, Klamath's only true super market has, and will, continually keep pace with the growing demands of today's food buyers with the finest of products, the best of service and the ultimate in convenience.



Emil Albrecht, Mgr.

Dale Hayden, Asst. Mgr.

ALMOST 400,000 CUSTOMERS

SHOP LOW COST EACH YEAR!

LOW COST Super Market

TOWN and COUNTRY SHOPPING CENTER