



DAIRY PROGRESS

Three Big Progressive Steps Made By Every Member of the Klamath Basin Grade A Milk Producers Association That Mean Better, Fresher Milk for You!



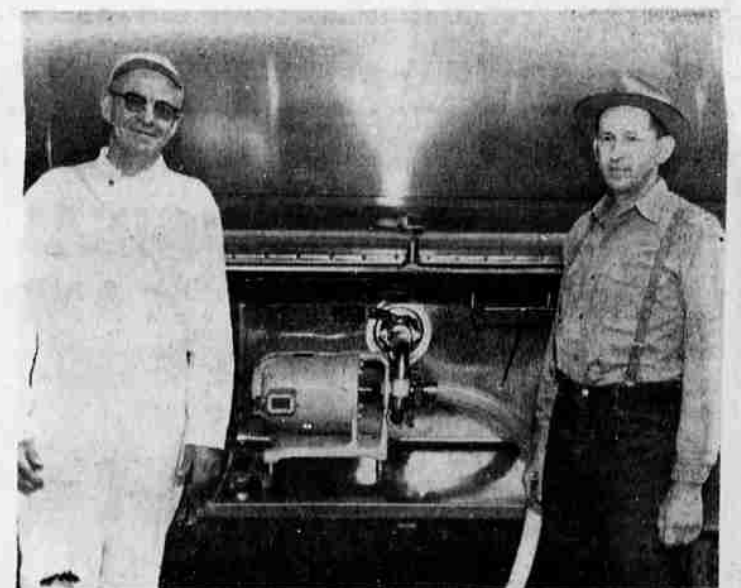
Modern Milking Parlors

Gone are the milk stools and milk pails from our local dairy farms. In their place are spotlessly clean modern milking parlors with sparkling stainless steel milking machines and networks of stainless steel pipes that take fresh sweet milk directly from prize dairy cows to . . .



Refrigerated Milk Coolers

Refrigerated milk coolers such as the one pictured above where fresh milk is immediately cooled to the perfect temperature for safe keeping. Gone are the cream cans that once stood in springs or milk houses waiting for the weekly trip to town.



Refrigerated Tank Trucks

Fresh milk is rushed directly from the dairy farm to the creamery in modern refrigerated trucks each day. No longer is milk days old when it reaches you, but it is refreshingly fresh, guaranteed clean and pure because it is untouched by human hands.

The Local Dairy Industry adds Millions of Dollars to Our Basin's Economy each year. It supports more than 250 families, and Brings Better Health to All of Us By Producing the Best Milk Possible.

THESE DAIRY FARMERS ARE ALL MEMBERS OF THE KLAMATH BASIN GRADE A MILK PRODUCERS ASSOCIATION

T. J. ALBERT
C. G. AXEL
JOE BAIR

E. G. BORN
LAWRENCE GERAGHTY
AL GRANT

I. L. HARRIS & SON
S. C. MASTEN & SON
R. H. NELSON

PIMENTEL BROTHERS
WILBUR REILING
MRS. S. ROMTVEDT

J. D. ROOT
IDA SCALA
HENRY SILVA

LOUIS SILVA
JOHN TOFELL
KENNETH K. WATERS

EDWIN WENZ
C. C. WHITMORE
GEORGE P. WU

WALTER COLLMAN
RAYMOND J. HOBSON

