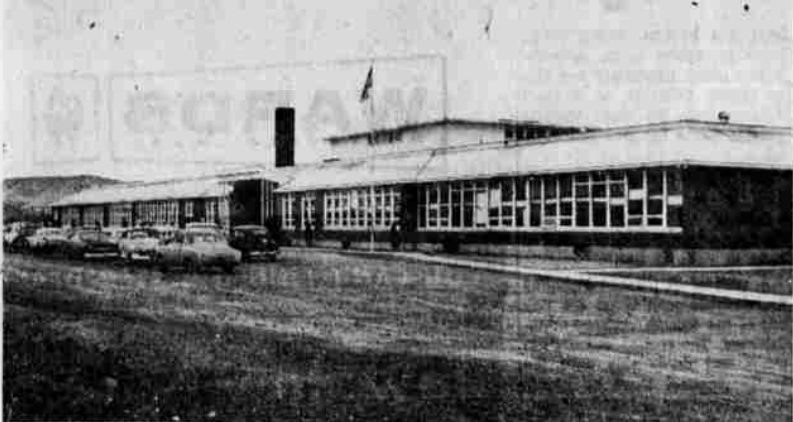


# Orderly Expansion Of Community Guided By Community Planner



**HENLEY HIGH SCHOOL**, the largest in the county school district, with 570 students enrolled in grades seven through 12, serves a vast area touching Langell Valley, extending to Keno and Worden and including some of the South Suburban area. George Elliott is principal. The school has a teacher for each of its 21 rooms.



**HENLEY ELEMENTARY SCHOOL** has 270 students in grades one through six and 12 classrooms and 10 teachers to serve them. The two spare rooms will be filled next year. Charles Hale is principle. The school serves most of the area in the Henley High School district east of Falcon Heights.

## Schools Are Pivot Point For Community Of Henley

Schools of the Henley District are the pivot point of this mid-county farming region, located on State Highway 39 a few miles southeast of Klamath Falls. High school students come from widely distributed homes, including Falcon Heights at Kingsley Field Air Force Base and with an enrollment of 572 students, seventh through the 12th grades, Henley High School is the largest in the county system. The elementary school has an enrollment of 190. George Elliott, a veteran in the county system, has been principal at Henley for 14 years. He has seen the building expand with its four additions to the original structure built at a cost of approximately one-half million dollars. Improvements and additions have also been made to the grade school. Charles Hale is principal at this building where seventh graders are to be moved next year to cut down the size of classes in the other building. Dreams and ambitions of Henley High School students and fac-

ulty soon are to be realized, brought to fruition through the generosity of persons in the community, and the energy and action of the student body, the teaching staff and an enthusiastic committee. The athletic field has never been lighted. The need has been talked about for several years, a few dollars were picked up here and there and put into a bank to draw interest, but there were not dollars enough to start a lighting program. Recently about 20 dads of students met to "do something about it," and in two weeks some \$3,000 has been raised. More cash is needed, says George Elliott, before the fund is sufficient for work to be started, but the committee is "just getting into trim for the final push." High school students, not to be sidelined, will put on "The Soaring '60s," a riot of fun and silly situations, on March 9 to raise more dollars. Even the entertainers will pay admission. When enough cash is raised, 10 poles, 60 feet high, each bearing lights totaling 120,000 watts of electric power, will encircle the field and night athletic events will be in order. Progress since the first small building in 1909 has marched steadily forward. The Henley community dates its beginning back to the arrival of William and Esther Steel whose descendants have left their mark on this thriving agricultural spot in Klamath County. William Steel of Irish birth and Irish tenacity, spiced with Scotch ancestry, came to Oregon by covered wagon caravan in 1859 with his wife Esther and three-year-old daughter, Minnie, whose bright red hair was the delight of the Indians who saw her. Seeking new lands to conquer after a sojourn near Reno, Steel drove his herds through the Olene Gap, found sandy soil, sagebrush six feet high, Klamath Lake and native grasses. They settled near Stukel Mountain and traded at the town of Linkville, then with a population of about 100. The water in Klamath Lake haunted him. He envisioned the future with water on the land and with a one-horse plow, picks and shovels and willing Klamath and Modoc from the Indian Agency, he dug a canal eight miles long and saw the lake water spread across the thirsty land. It was the spring of 1884. That ditch, a continuation of one started by Linkville residents to water gardens, began about where Klamath Union High School is today and followed the general slope of the present "A" Canal. Steel's name has seldom been seen in print. His theory, supported by his wife Esther, was "the less people hear about you, the better," so his great contribution to the progress of the

Klamath country is little known. The first trees brought from a distance to Klamath County were brought by Minnie Steele Wilson and her husband George who took a one-horse cart to Reno and brought back poplar cuttings to shade their ranch home. Many of the trees growing about Henley today were cuttings from the trees the Wilsons raised. Years later, a mining engineer, James Henley, married Sophia Steel. The thrifty young man brought with him \$40,000 in cash, invested it all in cattle and hay and lost his herds in the "bad winter of 1888." He died a few years later leaving his young wife and a son, James Jr. Mrs. Henley, born with a "green thumb," planted an orchard, fine gardens and flowers and shared with her neighbors. She was a business woman too, and retained her share of the original Steel ditch, selling water to the farmers and later her interest to the U.S. Bureau of Reclamation. She was a bundle of energy in community effort. To help raise money to move the school from its original location at Spring Lake, she made cider and sold it at school functions. She loaned old-fashioned clothes for school plays and took an interest in each child. The new one-room school was named for Sophia Henley who lived to see it grow and grow. As time went on the community became Henley where today two stores, a service station, a railroad siding, and the Dixon Feed and Seed Company serve the people.

Planning is one of the prerequisites to the orderly expansion and development of any modern city or county, and the Klamath Basin is no exception. If present population trends continue, the population of Klamath Falls will be over 23,000 in 15 years and the urban area will accommodate about 43,000 people. Planning will be essential to insure that these additional families can be integrated smoothly into the community. A city without planning is like an old-fashioned quilt. Homes, businesses, factories and parking lots spring up in a haphazard fashion. A city that develops in such a fashion can die "on its feet."



**PLANNING TECHNICIAN** David DeVoe of the Community Planning Office is shown making a diagram of downtown parking facilities. DeVoe works closely with the city and county planning commissions to assure the orderly industrial and residential development of the Klamath Falls area. DeVoe is salaried by the University of Oregon under a program by the Federal Bureau of Municipal Research and Service. Fred Hoagland heads the City Planning Commission and Bob Beach is chairman of the county group.

was established by the Bureau of Municipal Research and Service through the University of Oregon. The office is financed by the city, county and federal governments on a 27-37-26 per cent basis. DeVoe is the planning technician for the city and county planning commissions, which advise the city council and county court, respectively. Both governing bodies have been responsive and cooperative in accepting suggestions for future planning, DeVoe said recently. The first step by the planning office was to take a complete inventory of the Klamath Falls area. Each lot, house and street and its use was listed. This showed general development trends. Then, studies were undertaken to determine what the needs of the area would be in 10 or 20 years. Studies were prepared on population trends, park and recreation facilities, major streets, the central business district and land usage. A new zoning ordinance, which was prepared by DeVoe and the City Planning Commission, was

adopted by the city council in December 1959. The zoning ordinance, along with a modern building and housing code, is the legal means by which the city can protect the land and property investments of its citizens. It establishes for example, that a junkyard cannot be placed next to a residential section or a boiler factory next to a hospital. The city council has shown considerable interest in the organization of the downtown shopping area and adequate parking for shoppers. Mayor Robert E. Veatch, formerly a member of the planning commission, has recognized the need for planning. His administration has already begun condemnation proceedings against several dilapidated buildings. The Pelican Theater is being torn down to provide space for a parking lot. This project has been spearheaded by the Park and Shop Corporation of Klamath Falls. The county, experiencing rapid expansion in some areas, has some unique problems. The county encompasses rural farm areas and high density industrial sites.

All of these must be reconciled in an orderly manner. Pelican City was the first target for the County Planning Commission. A development plan has been offered to the county court and a zoning ordinance is in the preparation stage. Pelican City and the South Suburban Area were the two districts most in need of planning assistance. "The South Suburban Area is a good example of what happens when a district develops without planning," DeVoe said. "There are no standards for new construction, just as long as the buildings conform to minimum health laws." A development plan and a zoning ordinance are due to be prepared for the South Suburban Area this year. The two planning commissions

are staffed by volunteer citizens who serve without pay. Fred Hoagland is chairman of the City Planning Commission. Other members are E. S. Robinson, John Howard, Bob Beach, Don Sloan, Dr. Hugh Curran and Ernest Gordon. Mayor Veatch, City Attorney Henry Perkins and City Engineer William Wales are ex-officio members. Beach, who does double duty, heads the County Planning Commission, Walt Bingham, M. R. Morrison, Elmer Lemler, Roy Gooding, Jim Kerns Jr. and Bob Norris are the remaining commission members. County Engineer Jack Kallinski, County Agricultural Agent C. A. Henderson and County Assessor Clyde R. (Hap) Caldwell are ex-officio members.

**SPECIAL PURCHASE!**  
**COLONIAL PICTURES**  
8" x 10" rough textured prints with maple finish frames. Very attractive.  
**YOUR CHOICE... \$1.49**  
**LUCAS FURNITURE**  
195 E. Main Ph. 4-3134

## British Protest Williams 'Interference'

LONDON (UPI) — Pro-government members of parliament have demanded that Prime Minister Harold Macmillan protest to President Kennedy about Assistant Secretary of State G. Mennen Williams' "interference" in the affairs of British Africa. Statements made by Williams during his current African tour touched off a dispute in parliament and threatened a rift in Anglo-American relations. Irate demands that Macmillan take the matter up in Washington were contained in a motion proposed in the House of Commons. Conservative Party MPs John Biggs-Davison and Anthony Fell asked Macmillan to protest to Kennedy "about intervention of United States officials in the affairs of territories for which her majesty's government is responsible in view of the recent activities of Mr. Mennen Williams during his visit to British territories in Africa."

In Nairobi, Williams advocated "Africa for the Africans," which led Britons to conclude he had in mind only non-white Africans. The State Department official insisted there was "Africans of every race." In Kampala, Williams told a news conference he wanted to see stable, independent governments in Africa to prevent "another kind of tyranny." Newsmen bristled at the remark and asked if he meant to imply British rule was tyrannical. Williams flushed and replied: "I withdraw the reference to 'another kind of tyranny.' I do not mean the British are a

tyranny." The U. S. State Department brushed off British press criticism of Williams' African tour as "editorial judgment."

He doesn't have to worry about a thing. He bought his house from WILL CEDARLEAF REALTOR.

WILL CEDARLEAF REALTOR  
1927 So. 6th TU 2-0154

## 4-H NEWS

**LOST RIVER STITCHERS**  
The fourth meeting of the Lost River Stitchers was called to order on Feb. 14 at the home of Mrs. Emma Ralph, club leader. The Charmingly Yours girls started on their projects and the Let's Learn to Sew girls practiced sewing on the sewing machine. Mrs. Jack Rogers and Mrs. John Thompson were guests at the meeting. Patsy Rosandich, News Reporter.

## Serenade In Union Hassle

MEXICO CITY (AP)—A group of musicians are trying to tout a labor board into taking a hand in a dispute between factions pushing rival candidates for the presidency of the musicians union. Trombonist Venustiano Reyes and more than 200 musicians began a lusty serenade Thursday outside the offices of the Board of Conciliation and Arbitration. Reyes said the street symphony would continue day and night "until the board hears us."

**ON PLANES TOO**  
LOS ANGELES (UPI)—Mexicana de Avionica, the Mexican airline that prides itself on its gourmet food service on international flights, has added another touch. The airline now claims to be the first to serve Metrecol instead of the meal to those passengers on diets. The company said the 900-calories food substitute was added at the request of its regular passengers who had added pounds eating the regular fare.

WANT TO LEARN TO DRIVE?  
Phone TU 4-7690

WILL YOU HAVE A SLIM LINE— FOR SPRING TIME?

**LEEN**  
A DAY  
AN AID TO APPETITE CONTROL TO HELP UNWANTED POUNDS AWAY

60-day supply... 6.95  
30-day supply... 3.95

FOR MEN TOO!

**Pay Less Drug Store**  
SERVE YOURSELF and PAY-LESS

**WOW!**  
Deluxe Fowler  
**52 Gal. Water Heater**

FAST FAST FAST RECOVERY

Now Only **59.95**

Including \$15 Cal-Ore Electrical League Bonus  
10-Year Warranty!

Never run out of Hot Water!

**CASCADE HOME FURNISHINGS**  
412 Main Ph. TU 4-8365

**COUNT THESE SAVINGS MILK**  
Borden's, Pet, Segor or Carnation

**YOUR CHOICE 10¢** Tall Tins

Low Cost **BUTTER**  
**58¢** lb.

Miracle Whip **Salad Dressing**  
qt. **49¢**

**KLEENEX TUNA** 400 Count **69¢**  
Light Meat, Grated SeaCall • 1/2 tins

**Pineapple Juice** Honolulu Lady 46-oz. tins **49¢**

**Pancake Mix** Fisher's Golden 27 7 1/2-lb. Bag **69¢**

**POT ROASTS**  
Sorry we ran out last week. So we'll repeat price through Wednesday.

**39¢** lb.  
**Rib Steaks** 73¢ lb.

**Radishes and Green Onions** 3 bu. **14¢**

**Grapefruit** Arizona Seedless 8 lb. bag **49¢**

Specials for Monday, Tuesday and Wednesday

**Low Cost FOODS**

RIGHT TO LIMIT RESERVED  
Town & Country Shopping Center... 3800 So. 6th