

Public Is Sensitive About Treatment Of President

By MERRIMAN SMITH
UPI White House Reporter

WASHINGTON (UPI) — Backstairs at the White House: The public, it seems, is highly sensitive about respect for President Kennedy and his family. The mail on this subject has been only short of amazing since the inauguration.

Radio and television commentators, columnists and reporters in general have been receiving torrents of letters about the Chief Executive. The general tone of this most unusual public response is that Kennedy is entitled to more courtesy than he is receiving.

Possibly this is a manifestation of public concern related to the youthfulness of the first family and the possibility of their being regarded somewhat flippantly. Some of the concern also has to do with the President's news conferences in which the public, via live television, is seeing for the first time the rather curiously American antic of 20 or 30 correspondents on their feet shouting simultaneously in an effort to get the President's recognition.

Any merchant in French Lick who invested in Kennedy mannequins probably will hear directly from M. McFarland. Dale E. Leber, social studies teacher in Lancaster, Pa., writes: "I was appalled at the lack of respect accorded President Kennedy by some (not all) of the reporters at Tuesday's live TV coverage. An unsigned note from Dallas, Tex.: 'I don't think it is properly polite the way the reporters jump up and yell at the President time after time. I'll bet they didn't do this with other Presidents.'"

Not necessarily in defense of anyone, but the facts are these: There is nothing new about the manner in which reporters seek the President's recognition at news conferences. This has been going on for years. The public, however, is seeing it for the first time.

Newsman Called Rude
Thomas Farrell of Philadelphia, Pa., writes: "I was shocked at the lack of manners among many of the newsmen as they submitted their questions to the Chief Executive."

- MONDAY**
- THETA THETA BHO, 7:30 p.m. in the IOOF Hall.
 - ARTIFACTORS CLUB, YMCA, 7:30 p.m., potluck dinner, bring own table service.
 - THE DEMOCRATIC Central Committee of Klamath County, 7:30 p.m., circuit courtroom at the courthouse.
 - SUBURBAN SIREN'S Sari's Restaurant, no-host dinner, 7 p.m.
 - NEIGHBORS OF WOODCRAFT meet at 8 p.m. in the Knights of Columbus Hall.
 - JOB'S DAUGHTERS No. 61, 7:30 p.m., Scottish Rite Temple.
 - BARBERSHOP CHORUS, Willard Hotel, 8 p.m.
 - MARINERS, Peace Memorial Presbyterian Church, potluck dinner 6:30 p.m.
 - HENLEY Job's Daughters No. 51, grange hall, 7:30 p.m.
- TUESDAY**
- KLAMATH LUTHERAN Ladies Aid, 8 p.m. Guest speaker Floyd Wynne.
 - RIVERSIDE PTA Founders' Day Tea and meeting, 2:30 p.m., school gym.
 - KF LITTLE LEAGUE meeting, 7:30 p.m., KF Auditorium.
 - KF BLUEBIRD LEADERS meeting has been canceled till Feb. 28.
 - TULELAKE GARDEN CLUB, Presbyterian Church, 2 p.m. Alan Baker guest speaker.
 - DUPLICATE BRIDGE CLUB, city library, 10:15 a.m., Mrs. Grace Kresse director.
 - OREGON STATE COLLEGE Mothers Club, home of Mrs. Harry Fredricks, 1935 Manzanita Street, 7:30 p.m.
 - AMERICAN LEGION and auxiliary and friends, card party at 2 p.m., Legion Hall. Mrs. Julian Abbott, president, hostess. Prizes will be given by Legion.
 - ROOSEVELT PTA, school auditorium at 2 p.m. James Schields, choral instructor, will play piano. Mrs. Richard Beane will conduct Founders' Day program. Past presidents to be honored.
 - MOUNT LAKE LADIES AID, Mount Lake Church, 2 p.m.

Medical Mirror

WHAT DOCTORS SAY ABOUT:

Bladder Trouble

- Days of Pregnancy
- Salt & Cheese
- Frequency
- Pneumonia

Q. What causes cystitis?
A. Cystitis means inflammation of the bladder. There are many causes, the most frequent being infection. Bacteria (germs) get a foothold when the flow of urine is obstructed or when the urine contains sugar (as in diabetes). In women, cystitis may be associated with vaginal infection.

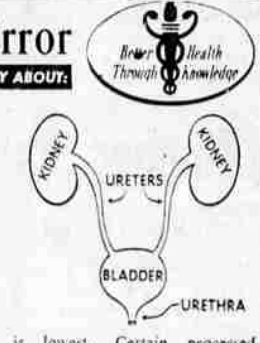
Q. What is the duration, in days, of normal pregnancy?
A. Calculated from the last menstrual period, it has been variational given as 290 to 304 days. However, in 1946, medical authorities testified before the Supreme Court of New York that a pregnancy extending 355 days was "not impossible."

Q. Which of the ordinary cheeses contain the least salt? I am on a low-salt diet.
A. So far as the sodium content is concerned (sodium is the important element), cream cheese is lowest. Certain processed cheeses may be very high in sodium. The diet sheet supplied by your doctor will probably state which cheeses, if any, you may have.

Q. Does getting up at night or frequent urination mean kidney trouble?
A. Not necessarily. Frequent urination may be due to certain diseases or to irritation of some portion of the urinary apparatus below the kidneys. See your doctor.

Q. What is pneumonia?
A. It is chronic inflammation of the lungs caused by inhalation of mineral dusts such as silica and asbestos. Fibrous tissue forms in the lungs and this shows up in x-ray pictures as shadows.

It's wise to have a family physician. Then, if an emergency arises, you will not be a stranger to him. And remember, our friendly and competent staff will be glad to serve your special needs.



There's no place like SAFEWAY for BEEF

This week, while this big BEEF SALE is going on, is a perfect time for you to learn why folks in this area say, "There's no place like Safeway for Beef."

Actually, it's the combination of things we do that makes Safeway beef better. We start with USDA Choice Beef, the grade which means top flavor, tenderness and juiciness. Then, in our own climate-

controlled aging rooms this beef is aged to perfection. Finally, to give you more fine eating meat for your money, each cut is carefully trimmed before weighing.

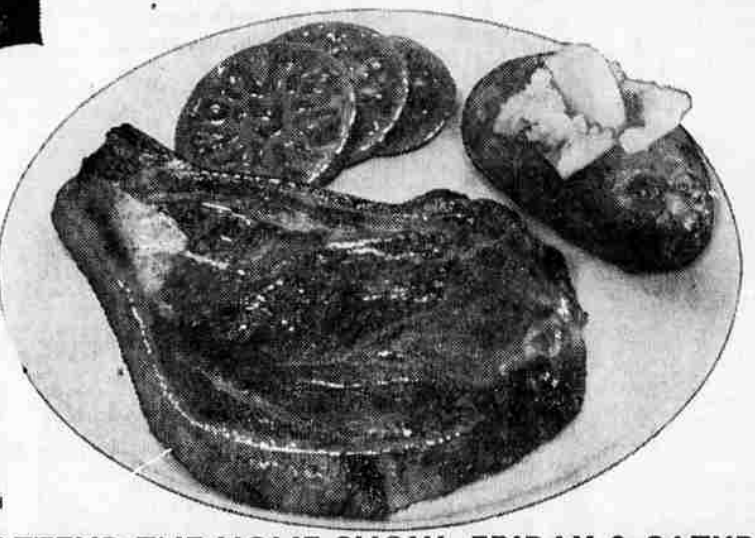
These are the things which make it possible for us to guarantee perfect eating. Money back without return of the meat if any cut of Safeway meat should ever fail to please.

IVORY SOAP

Save 16¢ at Safeway on this favorite. Reg. 4 for 29¢.

16 Bars 1⁰⁰

Limit Rights Reserved



"USDA CHOICE" Superb RIB STEAK

Just wait until you taste the first juicy forkful of one of these luscious Safeway steaks. M-m-m-m!

79¢ lb.

Closely trimmed before weighing for full value.

PLAN TO ATTEND THE HOME SHOW - FRIDAY & SATURDAY, FEB. 24 - 25

Money-Saving Features from our Grocery Dept.

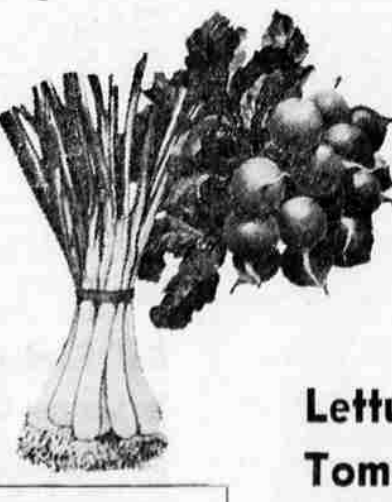
Pie Cherries	TOWN HOUSE, fancy tart - pitted	5	303 cans	\$1 ⁰⁰
Cherry Pie	Bel-Air, premium quality, frozen pies. Reg. 49¢	24-oz.	pie	39¢
Star-Kist Tuna	Chunk style Reg. 31¢	4	No. 1/2 cans	89¢
Slenderway "900"	Lucerne, liquid diet control	Qt.	ctn.	89¢
DRY CEREALS				
Kellogg's PEP, 10-oz.		4	pkgs.	\$1 ⁰⁰
Post Toasties, 12-oz.				
Post Grape-Nuts, 10 1/2				
SILK TISSUE				
White*only, 4-roll packs or single rolls		12	rolls	1 ⁰⁰
BREADED SHRIMP	Trophy brand, flash-frozen. Delicious quick-meal idea	10-oz.	pkg.	49¢
FRESH BEEF LIVER	Young and tender. Low in price. High in nutrition		lb.	49¢
CORNEd PORK PICNICS	Tender, meaty, cured pork shoulders. Safeway's own.		lb.	29¢
SLICED BACON	Safeway brand Lean & Mild	1-lb.	pkg.	59¢
TUNA PIES	Manor House Frozen Pies	4	8-oz. pies	1 ⁰⁰
PORK SAUSAGE	Safeway, bulk 100% pure		lb.	49¢
CRAB MEAT	Lenten favorite		Full lb.	1 ⁴⁹

Produce Department Features!

RADISHES Green Onions

Crisp and bright. Rushed from the fields to your Safeway store.

3 Bunches 19¢



NORTH DAKOTA RED POTATOES
10 lbs. 39¢

Lettuce	Crisp, solid green heads	2	heads for	25¢
Tomatoes	Red ripe. Salad favorite		10-oz. tube	19¢
Grapefruit	Ruby Red Coachella Valley		5-lb. bag	49¢
Winesap Apples	Washington Extra-fancy	4	lb. bag	49¢
Fuerte Avocados	Excellent quality	2	for	29¢
Fancy Broccoli	Delicious with sauce		lb.	15¢

U.P.



means **Union Pacific**



..it also means Unsurpassed Performance

Members of the Union Pacific freight team have a tradition to live up to—that of providing unsurpassed performance. It is reflected in our desire to please... to handle every shipment "just so"... to make deliveries when and as promised.

Got anything going our way? We'll do the right thing by it.

A. H. Clark, Dist. Div. Agt., Klamath Falls or Union Pacific P.O. 1107 9th St., Sacramento, Calif.



POTATO CHIPS
Blue Bell Barbecue
3 1/2-oz. Size
29¢

LUX LIQUID
for sparkling dishes
22-oz. Size
69¢

DIAL SHAMPOO
Dandruff Remover
7-oz. size
67¢

DU PONT SPONGES
Budget Pack
pkg. of 2 **29¢** pkg. of 4 **29¢**

SAFEWAY

Prices good Feb. 20-23 at Safeway in Klamath Falls. We reserve the right to limit.