

THE HOUSE OF THE WEEK

Home Grows With Family And Income

By DAVID L. BOWEN

Reconciling the limited present with the promising future is one of the most difficult tasks facing a family planning to build a home.

The problem can often be stated in terms like these: If we build the house we can afford now, we're bound to have to move in four to six years when we have more children and (hopefully) more money.

Usually there are only two apparent solutions. Either build a small house now and pray for a resale price good enough to make possible the purchase of a bigger home; or continue to rent and try to save enough to finance the purchase of a completely adequate home.

The first alternative means there is a certainty the family will eventually be uprooted and moved to a new neighborhood; the second assumes the somewhat shaky premise that a growing family today actually can save large amounts of money.

In House of the Week B-52 Architect Rudolph Matern presents a third alternative: Build now and expand the house as family and income increase.

The plan is designed to grow and grow—but not like Topsy. It starts out as a two-bedroom bungalow. Three expansion stages later it is a gracious four-bedroom ranch with two and a half baths, luxurious rear porch and attached garage. The architect's pre-planning insures that the additions can be made at minimum cost, without disturbing the main living pattern.

The basic house has 1,314 square feet of living area. Because of its simple rectangular shape and open planning, construction is economical. In the first stage of expansion, a third bedroom and private bath are added at the rear to make the total 1,554 square feet. When the mudroom and fourth bedroom are added to the left of the kitchen under the latter stages of the second expansion, total living area becomes 1,797 square feet. The garage is a final addition.

Additional Details

This design ingenuity allows for many different circumstances of family size and budget limitations. Of course, if budget is not a consideration, the entire house could be built at the outset.

The planned addition at the left



BEAUTY AT ITS BEST: This drawing shows House of the Week B-52 after the final expansion. In this form, the home has four bedrooms among a total of eight rooms, with 2½ baths and attached garage. Basic plan contains only two bedrooms in 1,314 sq. ft. of living space. After the final expansion total rises to 1,797 sq. ft.

side also offers several possibilities, depending on funds available. It could first be a porch, then a garage could be added, and finally the porch could be furnished as a fourth bedroom or shop, with bathroom, mudroom and laundry facilities.

A large, attractive foyer allows effortless, trouble-free circulation in the original section of the house. The living and dining rooms combine to form a spacious open area more than 32 feet long. The kitchen and family room make up another dramatically spacious area—23' 4" in total length. Two big fireplaces—one serving the living room, the other the family room—help to separate the two main areas.

Length and a low roof pitch give B-52 a modern ground-hugging look. Lattice work, shutters and wood columns add a distinctive colonial atmosphere.

The plan for the garage addition includes a storage room and closet, providing generously for outdoor work and play equipment. There is direct access to the garage and storage area from the covered rear porch for added convenience.

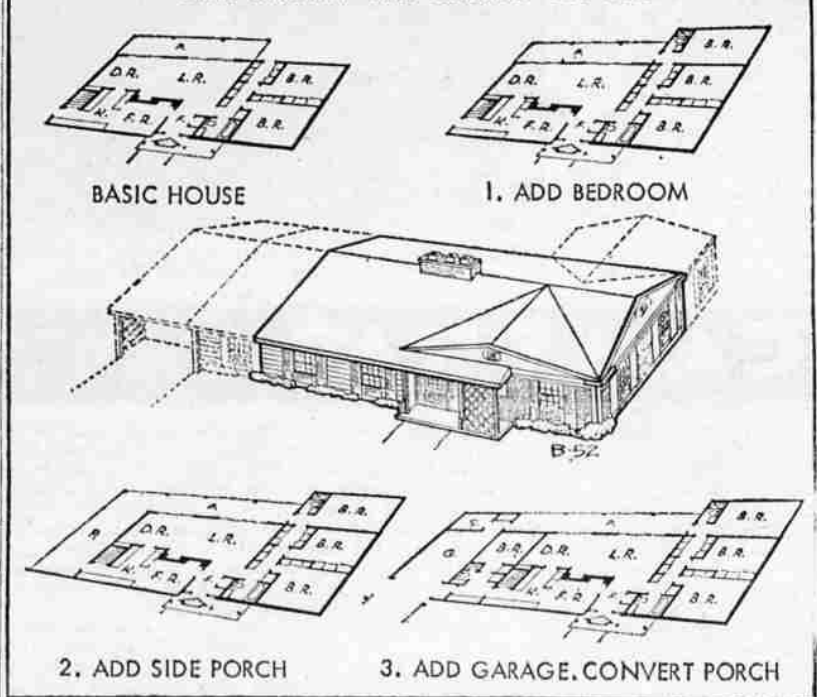
B-52 STATISTICS

This colonial ranch can be expanded in stages from a two-bedroom home of 1,314 sq. ft. in living space to a four-bedroom home with 1,797 sq. ft. of living space.

The dimensions of the basic house are 52' 9" in width by 25' 6" in depth. Fully expanded, these dimensions increase to 75' 5" and 37' 10".

There are six rooms in the basic house and eight in the fully expanded version.

How Interior and Exterior Grows...



Send this coupon for your STUDY PLAN

YOU CAN GET a study plan for The House of The Week by filling in your name and address on the coupon on this page and sending it with 50 cents to this newspaper.

This study plan shows each floor of the house together with each of the four elevations, front, rear and sides of the house. It is scaled at 1/8-inch per foot. It includes a guide on "How to Get Your House Built."

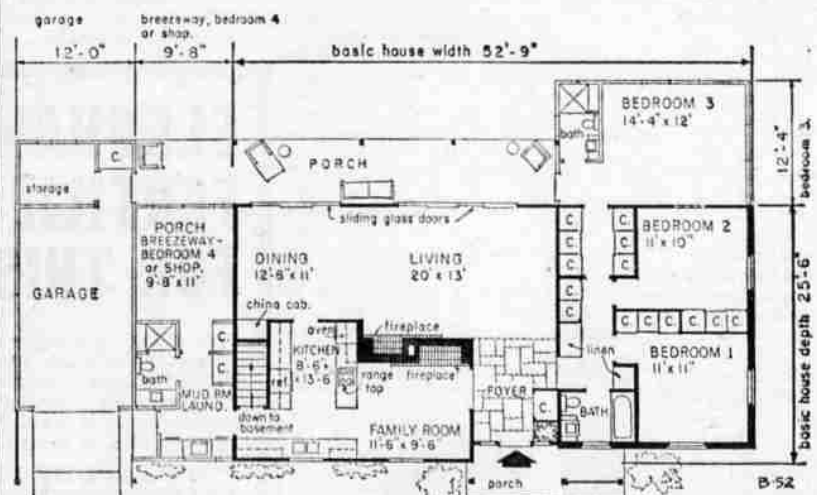
You can take this study plan to your bank or other mortgage lender and to your builder and get rough estimates on the cost of construction in this area as well as an idea of the cost in relation in your budget.

With this information you will know whether you will want to proceed with construction by ordering working blueprints direct from the architect and asking for bids for the work.

STUDY PLAN ORDER COUPON

Building Editor:
Enclosed is 50 cents. Please send me a copy of the study plan of **The House of The Week B-52**

Name _____ (please print)
Street _____
City _____ State _____



FLOOR PLAN: Heavy lines show original construction in expandable B-52. Expansion possibilities add a bedroom at the rear and porch breezeway, fourth bedroom or shop and attached garage at the left. Note unusual kitchen arrangement, putting both family room and dining room within handy serving distance.

ON THE HOUSE

What's the best wall material for an extra room in the house? Don't let anybody give you a flat answer to that question unless he has first asked you a lot of questions. There are many factors to be considered, not the least of which is the use to which the room will be put and the amount of money that is to be spent.

Also, entirely aside from the practical considerations there is the very unpredictable element of personal preference. You have to like the appearance of the new room or your reasons for selecting a particular kind of wall material will seem less and less

important as time goes on. How then do you decide? By looking over all the available materials, by asking questions, by reading looklets and by inspecting finished installations, either in model rooms displayed by dealers or in the home of friends.

As a starter, let's see what some of your choices are. There is inexpensive gypsum board, which is a form of plaster covered on both sides by strong treated paper. The most common form requires the filling of the joints before painting or papering.

Asbestos cement board looks like gypsum board, but costs

more and is ideal for bathrooms, laundry rooms and furnace enclosures because it is water resistant as well as fireproof.

Fiberboard or insulating board has an inside core of wood fiber, sugar cane residue or some other fibrous vegetable material and comes with a predecorated finish.

Hardboard is made of wood fibers bonded in hydraulic presses to form a material of great strength with a smooth surface. It is excellent in rooms that will be subjected to hard usage, since it resists dents and other bruises. One type of hardboard comes with a plastic surface that combines good looks with durability.