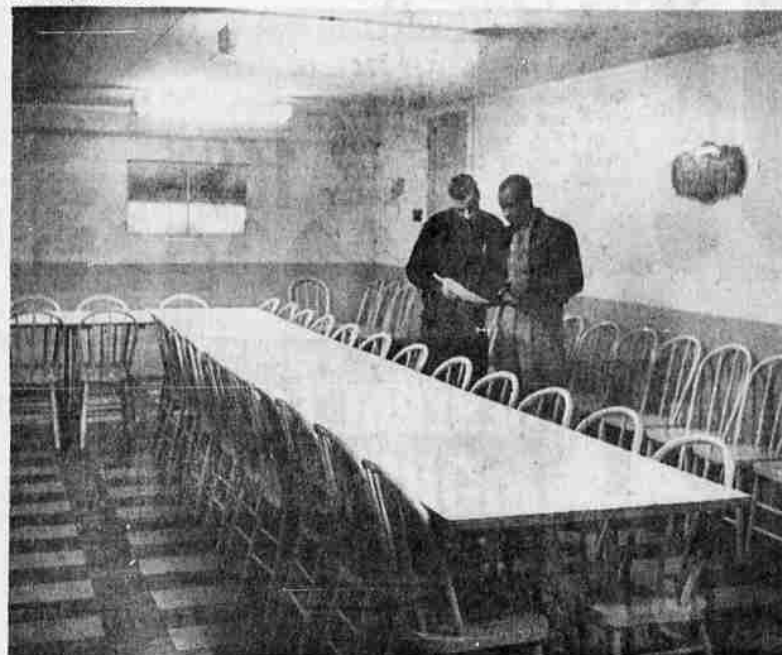


Go to the CHURCH of your choice this SUNDAY

RUTH KING - Church Editor



CLEAN BEDDING and pillows are provided on double deck cots for men who stay overnight at the Klamath Falls Gospel Mission. The new dormitory provides accommodations for 50. Before it was completed many men who sought shelter could not all sleep in beds.



BRIGHT AND CLEAN new dining room at Klamath Gospel Mission can seat 150. Kitchen is also in new addition just completed. The public is invited to view the new facilities Sunday, Feb. 12.



THE CHURCH OF JESUS CHRIST of Latter Day Saints was goal one recent Sunday morning for this group, left to right, William J. Tucker, Laurie Tucker, Mrs. H. B. Wade, Harold Wade and Noranne Tucker. Wes Guderian, Herald and News photographer, was nearby as churchgoers came to worship at morning service.

Former Klamath Falls Man Elected To Church Office

Phil Hitchcock, former Klamath Falls implement dealer and elder of First Presbyterian Church, Yakima, has been elected to the highest office in the National Council of Presbyterian Men, that of council president.

At the annual meeting, Jan. 13-14 in Cleveland, Hitchcock, a former vice president, was elevated to this highest office for the coming year.

At one time he was director of Church and Public Relations for Lewis and Clark College, Portland, and is currently logging superintendent of the White Swan Lumber Company.

He was president of the Oregon State Aviation Council in 1945; governor of Pacific Northwest District of Kiwanis International in 1943; was a member of the Oregon State Senate 1948 to 1954; was a candidate for the Republican nomination for United States senator from Oregon in 1956.

He has been moderator of the Synod of Oregon; has been General Assembly's chairman of nominations committee in 1956; he was a commissioner from the Presbyterian Church to General Assembly of the National Council of Churches in 1957.

He has been a member of the Executive Committee of the United Presbyterian Men and its senior vice president in 1956 and 1957. In 1955 he was recipient of the Brotherhood citation of the National Council of Christians and Jews for the state of Oregon. He currently is an elder in this church.

The new leader of the 400,000-man council declared that "the United Presbyterian Men have grown in influence and in spiritual maturity and I trust this will be felt in increased responsibility for the program of the church."

Both are supported by many of the major churches and the Council of Churches.

Mrs. Kenneth Lambie and Mrs. William Barnett will be coffee hour hostesses following the service.

More than 95 per cent of the world's tea output comes from Asia, with the rest being grown in Africa and the Soviet Union.

Phil Hitchcock

More than 95 per cent of the world's tea output comes from Asia, with the rest being grown in Africa and the Soviet Union.

Phil Hitchcock

Phil Hitchcock

Phil Hitchcock

Phil Hitchcock

Phil Hitchcock

Phil Hitchcock

Jack Wright Will Speak

Peace Memorial Presbyterian Church activities in the near future include a meeting of the Women's Association Monday, Feb. 13, at 7:45 p.m. Jack Wright, assistant to the superintendent of the Klamath Falls Gospel Mission, will be the speaker. An executive meeting will be at 7 o'clock.

The church session announces an eight-week Lenten season Bible study, "Panorama of the Old Testament," led by the pastor beginning Sunday, Feb. 19, from 8 to 9 p.m. and continuing each Sunday evening for the eight weeks.

Church women will join in the annual World Day of Prayer observance as host group to the United Church Women on Friday, Feb. 17, starting at 1:30 p.m. at the church.

The theme will be "Forward Through the Ages," with special music and short dramatization directed by Mrs. Nancy Hageman.

Mrs. Vesta Shogren, Presbyterian recording secretary, and Mrs. Irene Ferguson, Presbyterian sewing secretary, attended a planning session at Roseburg this week to help formulate plans for the spring Presbyterial to be held in Ashland in April.



"FAMOUS CHEFS" of Peace Memorial Presbyterian Church will prepare and serve the Presbyterian Men's spaghetti dinner, Saturday, Feb. 11, from 5:30 to 7:30 p.m. The menu will include the main course, spaghetti, salad, garlic bread and pie, for a small charge. The public is invited. Preschoolers will be served free. "Samplers," left to right, are Robert H. Buck and Maurice Athey.

Auxiliary Has First Meeting

An auxiliary group from the Woman's Missionary Circle of Immanuel Baptist Church held a first meeting Tuesday, Feb. 7.

The group will be named Priscilla Circle. Members are young married women of the church.

The missionary project and other group goals were planned.

Prayer Day

MERRILL—Lower Klamath Basin United Church Women will observe World Day of Prayer at the Merrill Presbyterian Church Friday, Feb. 17, at 1:30 p.m.

The program will include reference to the 75th anniversary of World Day of Prayer. Mrs. Paul Lewis will be in charge of the service.

A collection will be taken for the migrant ministry or other needed services. A baby sitter will be provided.

All women of Mt. Laki, Merrill, Malin and Tulelake areas are invited and urged to attend.

Friendly Helpfulness To Every Creed and Purse Ward's Klamath Funeral Home
Marguerite M. Ward and Sons
925 High TU 2-4404

Kindergarten Party Slated

The Bible Baptist Kindergarten will have its annual valentine program Monday, Feb. 13, from 2:30 to 3:30 p.m. and on Tuesday, Feb. 14, from 10:30 to 11:30 a.m. Parents, relatives and friends are invited to attend.

Children will take part in a skit, "Old King Cole Having a Birthday Party."

Public Talk Is Scheduled

The public is invited to listen to an address on the subject "Achieving Happiness in the Family Circle" to be given by Marion Stebbins, a representative of the Watchtower Society, at Kingdom Hall, 833 North Ninth Street, Sunday, Feb. 12, at 3 p.m.

The public is also invited to register for the study in the Watchtower at 4:15 p.m. on "Showing Fruitage of the Spirit."

Open House Observance Scheduled At Klamath Gospel Mission Sunday

Open House in observance of the third year of service for the Klamath Gospel Mission is planned for Sunday, Feb. 12, from 2:30 to 5:30 p.m. The Board of Directors, with Mr. and Mrs. John Pedersen and Jack Wright in charge of the mission, invite the public to be present and to view the work accomplished in recent months. Refreshments of coffee and cake will be served.

The Klamath Falls Gospel Mission was organized at a meeting held in Immanuel Baptist Church Dec. 22, 1957. Thirty two representatives of various churches were present and purchased the Covenant Church at 823 Walnut.

John Pedersen of Fresno was asked to serve as superintendent. Mr. and Mrs. Pedersen and Jack Wright, assistant to the superintendent, arrived here on Jan. 29, 1958, and doors of the mission were opened the night of Feb. 11. Twenty five men were present for the first service.

These men were fed, given a night's lodging and provided with showers. Since that day, three years ago, over 40,000 homeless men have entered the mission doors, 35,566 have attended services, shelter has been provided for 30,224, articles of clothing distributed total 19,543, men have been given 9,835 shaves, free meals served have reached 76,274 and spiritual aid has been given to 1,118 who sought it.

In March, 1959, with \$700 in a building fund, a new addition was started. "Men of the road" using picks and shovels dug a basement 30 by 40 feet and 7 1/2 feet deep. Concrete was poured for floors, walls and foundations.

Today, just being completed is a three-story addition that provides dormitory room for 50 men, complete with showers and rest rooms, adequate dining room, space to seat 150, new kitchen

complete with large walk-in storage room, a wash room, utility room, 400-gallon hot water tank and enlarged incinerator. Most of the labor has been provided by the men cared for at the mission.

Superintendent Pedersen in announcing completion of the enlarged facilities, said, "These accomplishments would have been utterly impossible without the continuing generous help of the many merchants and individual donors."

With the Board of Directors, Mr. and Mrs. Pedersen and Jack Wright expressed "heartfelt thanks to everyone that had a part in making the new rooms possible."

The founding executive board included Reuben Larson, Gene Baillie and Leonard Burkhardt. The present board includes Grant March, president; Willard Cedarleaf, treasurer; Robert Steele, secretary; C. H. Barnstable, Joe Allen, Reuben Larson, Lowell Anderson, Charles Drew, A. C. Olson, L. Reimer, Dell Stepp, Gene Baillie, Rodney Larson and Stanley Kendall.

and blankets were shipped to Chile. To this, the church added cash, food, medical supplies and other necessities.

Still other hundreds of tons of relief materials have gone to other disaster-stricken areas.

The Klamath Falls Church Welfare Society this past year reports 5,212 articles of clothing given and 812 hours of Christian help work done. During the holidays food baskets were distributed and many persons received help.

This year the local church plans to open a welfare center when a desirable location is found.

Altar Society Plans Supper

MERRILL—Fifteen members of St. Augustine's Altar Society, meeting Feb. 1 in the parish house, made plans for a chicken noodle supper to be served by the society Sunday, Feb. 12, at 6 p.m. for members of the church. Following the dinner, there will be cards and dancing.

It was reported that Father Vincent Egan is recovering in St. Mary's Hospital, San Francisco from major surgery. Cards will reach him there.

Lists of coffee hour hostesses and altar society hostesses have been posted in the vestibule of the church and the kitchen of the parish hall.

Annual Meeting Set For Sunday

The annual congregational meeting of Hope Lutheran Church will be held at the Shasta View Grange Hall, corner of Shasta Way and Madison, Sunday, Feb. 12. The meeting will start with a 5 p.m. potluck dinner.

The new pastor, the Rev. Warren W. Pechmen, will show slides of his former building program in Salem.

A business meeting will include election of church officers, the budget and such other business as normally is conducted at annual meetings. All members are urged to attend.

EVEN DIVISION

FOSTORIA, Ohio (AP) — The boy-girl ratio in Fostoria public schools is perfectly balanced. Of the 3,232 students, exactly half are girls.

BLACKOUT ANTICS

STILLWATER, Okla. (AP) — When the lights went out at Oklahoma State University these things happened: A student kissed several coeds in a hallway; four girls were trapped between floors in an elevator; and the fire alarm went off when the electric power was switched off.

HOW CHRISTIAN SCIENCE HEALS

Station Sundays KFLW 10:10 1450 KC A.M.

First Church of Christ, Scientist

A Branch of The Mother Church, The First Church of Christ, Scientist in Boston, Mass. 10th and Washington Services: Sunday Service 11:00 a.m. Sunday School 11:00 a.m. Wednesday Evening Testimony Meeting 8:00 O'Clock Lesson-Sermon Subject, February 12 "SOUL"

Golden Text: Psalms 35:9. My soul shall be joyful in the Lord: it shall rejoice in his salvation. Nursery facilities available during church services

TU 2-0736



PHIL HITCHCOCK

More than 95 per cent of the world's tea output comes from Asia, with the rest being grown in Africa and the Soviet Union.

Phil Hitchcock

Phil Hitchcock

Phil Hitchcock

Phil Hitchcock

Phil Hitchcock

Phil Hitchcock

Phil Hitchcock

Phil Hitchcock

Phil Hitchcock

Phil Hitchcock

Phil Hitchcock

Phil Hitchcock

Phil Hitchcock

Phil Hitchcock

Phil Hitchcock

Phil Hitchcock

Phil Hitchcock

Hallelujah! I'm Healed



SIGNS! WONDERS! MIRACLES!

HEAR ... A. L. WYRICK of Chicago

THE LAME WALK - THE BLIND SEE THE DEAF HEAR!

Plan Now to Attend the Great Miracle Crusade at ...

Faith Tabernacle Auditorium
2610 Shasta Way

This Miracle Crusade may be the greatest experience of your life! After 14 days of prayer ... 14 days of waiting upon the Lord ... God breathed living faith into Reverend Wyrick. And since that day, thousands have given their hearts to Christ ... thousands have been healed of sickness and disease. Continuing the work of the Lord, Reverend Wyrick has dedicated his life to crusading across the land, helping the lame, the blind, the deaf, and the ill.

SERVICES NIGHTLY Sunday Afternoon 2:30

