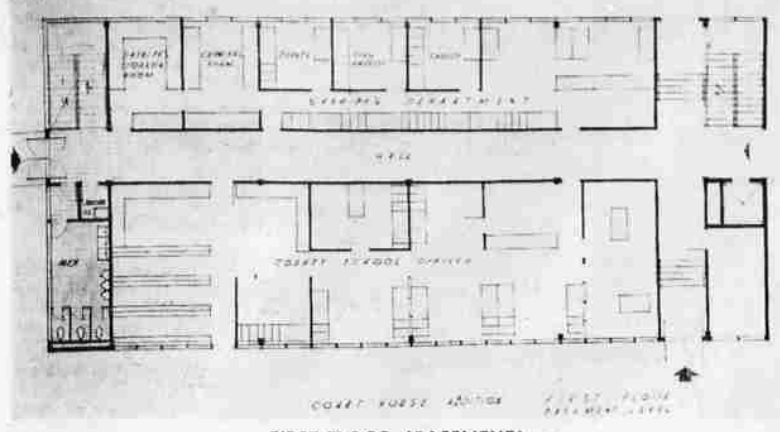
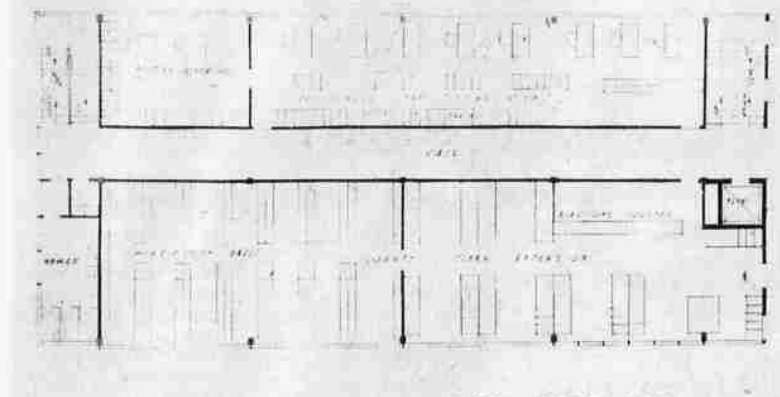


# \$400,000 Courthouse Addition Studied 4 Years

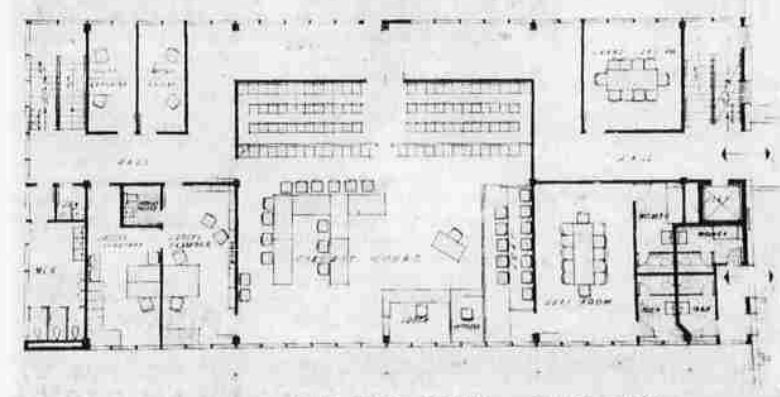
HERALD AND NEWS, Klamath Falls, Ore. Friday, February 10, 1961 PAGE 5-A



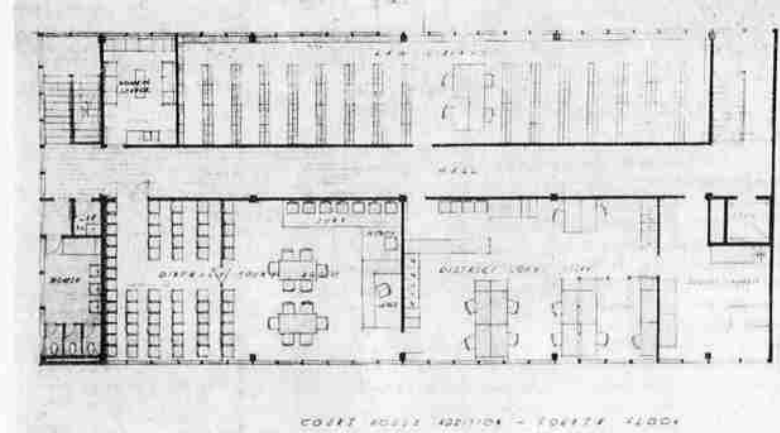
FIRST FLOOR (BASEMENT)



SECOND FLOOR (MAIN)



THIRD FLOOR



FOURTH FLOOR

## On The Record

**KLAMATH COUNTY DIVORCES FILED**  
 ABBEY—Cora B. from William W. Abbey.  
 BERTHELSON — Margaret E. from Charles O. Berthelson.  
 COX—Orville from Doria Mae Cox.  
 HENRY—Jacqueline from Richard Henry Jr.  
 KAULEE—Maude Loretta from Roger Danny Kaulee.  
 PIERCE — Lillian P. from Floyd E. Pierce Jr.  
**EQUITY SUITS**  
 Halton Tractor Company vs. Oregon State Tax Commission, seeks to set aside tax judgments.  
 First National Bank of Oregon vs. Mr. and Mrs. Bill B. Leebetter and O'Neill and McClaren, seeks \$12,873.39 due on land sale of a mortgage foreclosure.  
 Herman H. Meggison vs. heirs of the estate of George W. Charis and Ernest Caster and Otto King, seeks title to property.  
 Mr. and Mrs. Lee H. Nonschneier vs. Mr. and Mrs. Vernon D. Williams, \$5,543.81, payments due on sale of land.  
 Maude E. Ferguson vs. Marvin Brown, seeks to dissolve partnership known as Willard Hotel.  
**LAWSUITS**  
 Pacific Supply Cooperative vs. Glen Funderberger, seeks \$817.28 due on sale of gasoline and oil.  
 Pacific Supply Cooperative vs. John Derra, seeks \$845.84 due on sale of gasoline and oil.  
 Ed W. Miller vs. Carl E. Woods and Claude Hilbert, seeks \$1,384.12 for kitchen utensils taken without permission and \$500 for catering jobs lost.  
 Betty Ramsey vs. Leona Moran, seeks \$11,000 general and special damages for injuries suffered in auto accident.  
 Paul O. Gryn vs. Bend-Portland Truck Service and Billy Sulphur, \$20,000 for personal injuries and \$300.25 for damage to car sustained in accident.  
 Mr. and Mrs. W. L. Bullard vs. Don S. Midam (Midam's Factory Outlet Stores), seek \$1,000 rent or recovery of property.  
 L. Gieger vs. Alice Wright, seeks \$1,927 due on bill.  
 Paul O. Gryn vs. Bend-Portland Truck Service and Billy Sulphur vs. Paul McAtee, seeks \$1,250 credit plus \$50 per lot sold in TenAtee Homes subdivision.

By GUY W. FARMER  
 Preliminary plans for a \$400,000 addition to the Klamath County Courthouse, approved by the county court last month, were the result of almost four years of space studies.  
 Starting in 1957, architect John Howard inventoried all existing facilities in the courthouse to determine the county's needs. He talked to every department head in the courthouse in preparing his original space study. The first study was reevaluated each year.  
 "We sought primarily to provide more office space," Howard said. "Certainly not all the space in the new wing will be used immediately but we intended to gear the plans to the next 20 years."  
 The money for the new addition (\$400,000) has already been appropriated and the new structure

will require no additional tax money or assessments.  
 Howard emphasized that the structure will be an addition and not merely a remodeling of the present building. Some office space in the old building may be shifted but it will remain basically the same.  
 The new wing, to be built in the present parking lot between the county jail and the Veterans' Memorial Building, will be 118 feet long and 57 feet wide. The four floors will be extensions of the floors in the courthouse.  
 Results of the space study showed that the most inadequate areas in the courthouse were the district and circuit courtrooms and the county clerk's office. The present district courtroom is possibly the worst in the state with its cramped, dingy atmosphere.

The proposed plans call for a new district courtroom and court offices on the top floor of the addition. The new courtroom will seat twice as many people (about 30) and will be bright and modern in appearance. Judge D. E. Van Vactor, who died in December, and the present district judge, Hal F. Coe, were consulted for suggestions.  
 The third floor of the new addition will be given over to the activities of the circuit court. A new circuit courtroom will eliminate many of the complaints about the present courtroom. The jury will be separate from the spectators at all times. Prisoners from the jail will be brought to court by means of an overhead ramp. A new grand jury room will be built. Proposals now in the state legislature for a new circuit judge

will guarantee constant use of the proposed courtroom. Visiting judges now use the small and awkward equity courtroom on the fourth floor.  
 Howard and Judge David R. Vandenberg collaborated on the new circuit court facilities.  
 County Clerk Charlie DeLap told Howard that "vault space in the clerk's office was inadequate 20 years ago." He has said that a fireproof vault is an "absolute necessity." Vital county records and papers are now stored in an overcrowded vault in the courthouse basement.  
 Courthouse addition plans call for a fireproof vault to be built adjacent to the clerk's new office space. The clerk will also have an elections counter. Much election business is now transacted at a makeshift table in the clerk's entry hall.  
 Most county departments foresee additional space needs within the next 20 years. Some, like County Treasurer Eva Cook and the county court, expect their space requirements to remain about the same.  
 Sheriff Murray Britton's office will be moved out of the third floor of the courthouse to the basement of the addition near the jail. He will have six offices including an interrogation room and a storage room.  
 Tentative plans call for the county school offices to share the bottom floor of the addition with the sheriff. Dr. Clifford Robinson, school superintendent, said his office could use half again as much space as is available now in the Memorial Building. With the school office in the addition and juvenile offices in the new juvenile home, the welfare commission

could expand in the Memorial Building.  
 The second or main floor will house the clerk's, assessor's and tax collector's offices. Howard's plan is to relocate Mrs. Esther Newell's tax collection office in the new addition, leaving her present office as expansion space for Assessor Clyde R. (Hap) Caldwell. The addition would also contain a much needed room for posting machines.  
 The third floor of the addition and the courthouse is designed to be a "legal" floor with two circuit courtrooms, the district attorney's offices, a grand jury room and a special lawyers' room. District Attorney Dale T. Crabtree can expand in the future into what is now the sheriff's office.  
 Besides new district court facilities, the top floor of the addition will sport a large law library, which has been a goal of the Klamath County Bar Association for several years. The library will be equipped with study desks.  
 A women's lounge will be a welcome addition. Courthouse employees will be able to take their coffee breaks in the building and

**NOW! AT THE LUCCA CAFE**  
 World Famous-Delicious **BROASTED CHICKEN**  
 Real Italian Style **PIZZA PIE**  
 orders to go... or eat 'em here!  
**LUCCA CAFE**  
 PH. TU 4-3276  
 2354 South Sixth



TWO 4-H'ERS, Sherry Hobson, Merrill, center, and Don Owens, Klamath Falls, right, in Salem to attend the 4-H State Government conference, visited with Rep. George Flitcraft who explained the workings of the legislature. Sixty-six youngsters attended the sessions.

## Court Records

**KLAMATH COUNTY DISTRICT COURT**  
 Allen Greer, disobeyed stop sign, \$15.  
 Donald L. Horton, violate basic rule, \$17.  
 William D. Hutchinson, no PUC permit, \$10.  
 John Francis Bliss, bus speeding, \$10.  
 Billie L. Young, violate basic rule, \$15.  
 Lewis Frasier, violate basic rule, dismissed by court.  
 Eugene L. Christensen, tandem axle overload, \$15.  
 Lewis Reynolds, intoxicated in private place, 30 days and \$25.  
 Henry H. Landersing, petit larceny, dismissed by court.  
 Lloyd Wayne Cramer, angling without a license, continued.  
 Clifford R. Tolten, axle overload, \$26.  
 Virgil Cooper, no operator's license, \$5.  
 Edwin L. Corbin, no vehicle license, \$5.  
 Ethel M. Branson, permitting unlicensed minor to operate motor vehicle, \$7.50.  
 John Robinson, excessive overhang, \$5.  
 Thomas L. Houck, no vehicle license, \$5.  
 Wayne W. Martin, driving on wrong side of highway, dismissed by court.  
 Arthur W. Harger, improper passing, \$15.  
 Michael D. Copeland, disobeyed stop sign, \$7.50.  
 Marie E. Bartley, driving under the influence of intoxicating liquor, 180 days (120 days suspended) and \$250.  
 Clarence L. Maynard, axle overload, \$34.  
 Dorothy J. Robbins, no vehicle license, \$5.  
 Phillip W. Webb, no operator's license, \$5.  
 Nell A. Hill, violate basic rule, \$15.  
 Debra K. George, improper passing, \$20.  
 Harold M. Ellis, improper muffler, \$5.  
 Elmer D. Husted, driving while operator's license suspended, \$150; reckless driving, \$500.  
 Frances L. Cacka, disobeyed stop sign, \$15.  
 Richard H. Norland, improper passing, \$15.  
 Mr. and Mrs. Loyd F. Saunders and State Farm Mutual vs. Amps Hoyt, seek \$2,147.94 damage to car from wreck.  
 Dale Reeves vs. Robert L. McCammy, seeks \$4,072.50 general and special damages for injuries suffered in auto accident.  
 George W. Porter vs. Douglas Mcker, seeks \$1,165.20 due on promissory note.  
 L. Gieger vs. Gaylor Hatcher, seeks \$1,749.20 due on bill.  
 Sarah Blanton vs. doctors Paul W. Sharp and Ivan Thomason, seeks \$7,500 for malpractice damages.  
 LeRoy Gieger (trustee in bankruptcy of estate of William F. Wampler) vs. Harold B. Wright, seeks \$848 for repayment of loan, vs. Bert Hamilton, seeks \$500 for repayment of loan, vs. Diamond Lake Lumber Co., seeks \$14,564.84 for work performed on a contract.  
 Carter's Collection Agency vs. Harvey J. Hoakes, \$1,435.91 due on consolidated bills.  
 Robert E. Hilton vs. William J. Smith, \$27,824.50 general and special damages for injuries arising from auto accident.

## 4-H NEWS

**COUNTRY KNITTERS**  
 The Country Knitters 4-H Club held a meeting at the home of Sharon Micha Feb. 2. The members worked on their knitting. The group also discussed a possible date for 4-H Achievement Night. Refreshments were served.  
 Elizabeth Byrne, News Reporter.

**FLYING NEEDLES**  
 On Jan. 20 we received our 4-H project books. We talked about the books and looked at them. We also sang songs. Nineteen members attended this meeting. It was decided we would make barbecue place mats for our first project.  
 Rebecca Decker, News Reporter.

**NEW PINE CREEK**  
 NEW PINE CREEK—The combined 4-H clubs sponsored a baked food sale last Saturday at Alvin's Market. They grossed \$18 on their sale.  
 The sewing club met at the home of Mrs. Stanley Logan last Saturday. Present were Esther Hyatt, Sharlene Aldridge, Dianne Cundiff and Helen Noble. Hemstitching was the project studied.

## People Read SPOT ADS — you are

The deepest man has gone in the world's seas is 35,890 feet. This was accomplished in the United States Navy's bathyscaphe "Trieste."

**The Baldwin Organ**  
 \* Easiest Of All To Play! Most Authentic Tones and Percussion! Two 44 Note Manuals!  
 • RENT • PURCHASE • EASY TERMS  
 — FACTORY DEALER —  
**BOWDEN MUSIC CO.**  
 830 Main - Across from 10c Stores Phone TU 2-4883

**JUST NATURALLY GOOD**  
 Crater Lake DAIRY PRODUCTS

**Crater Lake GOLDEN GUERNSEY** is the ONLY milk you can buy with its NATURAL goodness and quality unchanged. Yes! Crater Lake Golden Guernsey reaches your table EXACTLY as produced...  
**FULL 5%** ... NOTHING ADDED, and NOTHING TAKEN AWAY. And ... Crater Lake GOLDEN GUERNSEY, produced on the fine ranches of Mr. Ray Hobson and Mr. Walt Collman, is the ONLY LOCALLY produced Golden Guernsey. Join those who serve the best possible milk; drink CRATER LAKE Golden Guernsey.

**Crater Lake GOLDEN GUERNSEY MILK**  
 finest quality milk you can buy...

FROM YOUR DEALER OR CRATER LAKE ROUTE MAN

**Cupid Day Gifts**  
 for little tykes are being featured right now at Spencer's, Klamath's only exclusive children's shop. Fancy little wearables in reds and red and white will help your child celebrate Valentine's Day with pride. Shop for him or her now at Spencer's, 619 Main, where you get Z.N. Green Stamps.

**ED ANDERSCH**  
 Frigidore Salesman says:  
 Frigidore Washers have the greatest washing action for all fabrics — and the greatest dependability.

**A SWEETHEART OF A PRICE!**  
**FRIGIDAIRE**  
 PRODUCT OF FRANCE

- Exclusive Automatic Soak
- Exclusive Summersault Washing
- Exclusive Flowing Heat
- Four Automatic Drying Cycles
- Budget Priced... 5 Year Warranty

**VERN OWENS'**  
**Cascade Home Furnishings**  
 412 Main Ph. TU 4-8365

**Cupid's Choice**  
 A perfect gift for your Valentine  
 ... beautiful new frames from Columbian's captivating spring collection. A sure-to-please personal gift that shows your thoughtfulness... and, at surprisingly little cost! A frame of your choice, exquisitely gift wrapped, ready to place in your loved one's hands. Her present lenses can be mounted in your gift frames in just five minutes!

**Dr. Noles** our 56th year  
**COLUMBIAN OPTICAL CO.**  
 730 Main TU 4-7121  
 Drs. Omar J. Noles and Robert Peters