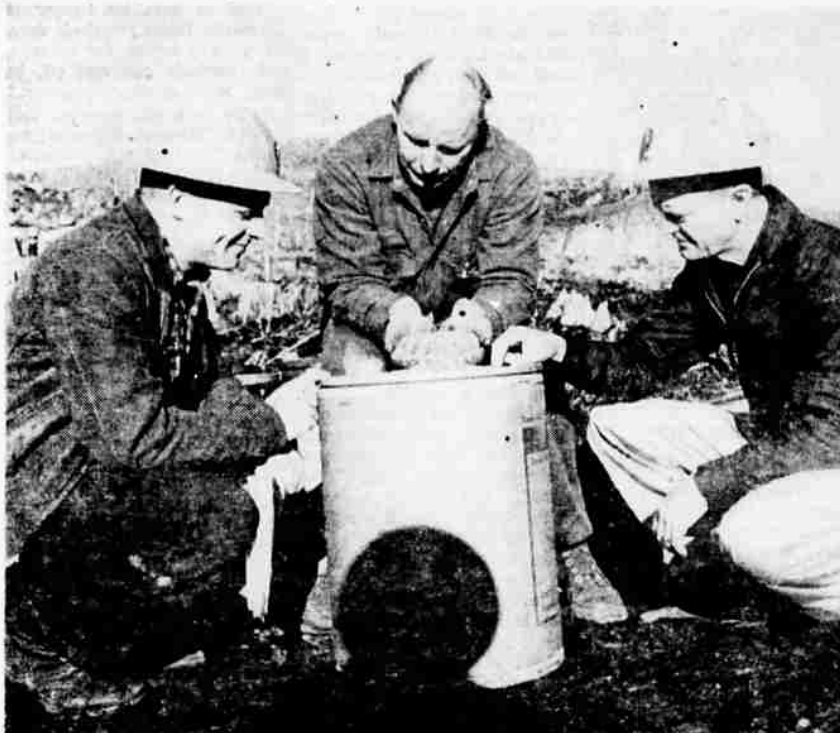
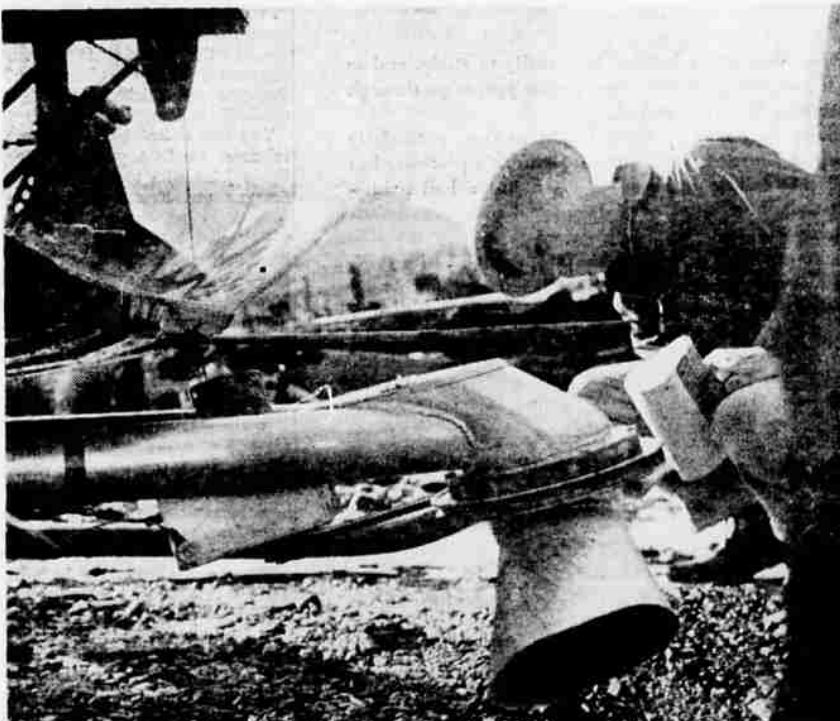




NEARLY 10,000 ACRES of International Paper Company tree farms in Oregon and Washington were recently seeded by helicopter equipped with new long-range seed-spreading device called a slinger. Note tube-like slinger underneath and in front of the 'copter, piloted by Dale Kaponen.



DOUGLAS FIR SEED used in extensive helicopter seeding of International Paper's Pacific Northwest tree farms is shown company foresters, left, Dave Mote and Maurice Bonney by Perpetual Forests' Bent Gerdes at IP's Grand Ronde Tree Farm. The seeds are coated with a rodent repellent and have an exterior of shiny aluminum flake which discourages birds from eating the seeds.



NEW HELICOPTER SEED SLINGER is inspected by Maurice Bonney, resident forester of International Paper Company's Longview Branch. The efficient long-range seed-spreading device was used in recent helicopter seeding of nearly 10,000 acres in IP's Oregon and Washington tree farms.



HELICOPTER SEEDING RESULT . . . this one-year-old Douglas fir seedling is outlined by International Paper forester in company's Grand Ronde Tree Farm. The young tree, seeded from the air last year, is part of new timber crop growing adjacent to tree farm area recently seeded this year by helicopter in IP's comprehensive aerial reforestation program. This winter IP seeded nearly 10,000 acres in its Oregon and Washington tree farms.

Chopper Proves Quick Planter On Tree Farms

Nearly 10,000 acres of International Paper Company's tree farms in Oregon and Washington were recently seeded by helicopter. This was a continuation of the comprehensive aerial reforestation program carried on in Long - Bel Division tree farms for more than five years.

Some 210 million seeds fell from helicopters on these IP tree farms: In Oregon . . . Gardiner, 2,500 acres; Grand Ronde, 2,500; Vernonia, 2,500; and Vaughn, 700. In Washington . . . Ryderwood, 1,500 acres.

Although latest seeding activity this season was in the Grand Ronde and Vernonia tree farms, Longview Branch Resident Forester Maurice C. Bonney reported a total of nearly 14,000 acres have been seeded by helicopter in the company's Ryderwood Tree Farm in the past five years.

With the completion last week of the second year of seeding at Vernonia, a total of 6,500 acres were planted from the air this

winter in the 120,000 acres of Vernonia, Grand Ronde, and Ryderwood Tree Farms administered by Longview Branch. This season's seeding completed a major portion of reforestation work at Grand Ronde. Nearly 5,000 acres at Grand Ronde have been seeded by helicopter in the past three years.

Gardiner? Resident Forester J. Marvin Kittelson stated, "In four

(Continued on Page 11)

Save \$5 - move yourself
RENT a new U-DRIVE truck
 Local or Long Distance
 • PICKUPS • VANS
 • FLATBEDS
 Pade, Dollies Available
 Beehive System
BEACON
 SERVICE STATION
 1201 E. Main TU 6388

CHERRY CHOCOLATE

ICE CREAM

Meadow Gold presents a parade of ripe cherries and luscious chunks of chocolate in rich Meadow Gold Ice Cream. It's a salute to good eating . . . so delicious your family will battle for more!



at your favorite grocers or from your Medo-Land Route man!