

Weather

Klamath Falls and vicinity - Fair through Saturday. High 47-52. Low tonight 27-32.

Herald and News

Weather

Northern California: Fair today and tonight except cloudy on central coast and fog in Central Valley; cloudy Saturday with fog in Central Valley; cooler in Salinas Valley Saturday.

Mt. Shasta-Siskiyou area: Fair with little temperature change through Saturday.

Price Ten Cents-14 Pages

KLAMATH FALLS, OREGON, FRIDAY, JANUARY 20, 1961

Telephone TU 4-8111 No. 6589

By FRANK JENKINS

John F. Kennedy, who as this is written has just taken the oath of office, is the youngest man ever to be ELECTED President, but not the youngest man ever to SERVE in that high office.

Kennedy is 43 years, seven months and 22 days old today. Theodore Roosevelt lacked 43 days of reaching his 43rd birthday when he became President after McKinley was assassinated.

What of Jacqueline Kennedy? She is 31 - and in her pictures she looks even younger than that. But she isn't the youngest mistress of the White House. That distinction apparently goes to Frances Folsom Cleveland, who was 22 when she was married to President Grover Cleveland.

They had five children, the first of whom was born in the White House. Mrs. Cleveland was married the year after she graduated from Wells college. She had had relatively little social experience, but she was equal to the demands of her position. She soon became widely known for her delightful ability as a hostess, and was of immense assistance to her husband.

The American public was deeply interested in her, she shunned publicity, in which she seems to have been similar to Mrs. Kennedy. She had little luck, however, in keeping out of the limelight, for the newspapers of the day followed her every word and action. It is highly probable that Mrs. Kennedy will have the same experience.

One of the most distinguished hostesses of the White House was undoubtedly Dolly Madison. She was 22 when she married James Madison, then a wealthy and distinguished member of congress. She had already been married and widowed.

When Madison became President Jefferson's secretary of state, she went to Washington not only to preside over her own home but to act as official hostess at the White House, as Jefferson was a widower.

It was a period of bitter political struggles, but Mrs. Madison's charm and popularity made her home a center of Washington society and a place of refuge from party quarrels. During the bitter years of her husband's Presidency, Dolly Madison's popularity made the social life of the administration gracious and brilliant.

When British troops occupied Washington in the summer of 1814, she fled, along with other citizens, carrying silver, historically priceless official papers, and valuables with her. She returned to find only the blackened walls of the White House standing.

Incidentally, Dolly Madison was the first hostess to serve ice cream in the United States. She served the strange foreign dessert at a White House dinner in 1809. It was an immense sensation.

The first ice cream is believed to have been made in Italy about 1550. The natives there had long used ice from the mountains to cool their drinks. They discovered that ice and salt made a freezing mixture. From there it was only a step to adding milk or cream and the Italians had ice cream. Up and coming Dolly Madison was quick to latch onto it as soon as she read about it.

Dolly Madison was the belle of the first inaugural ball. Then, as now, people poured into Washington for the inaugural ceremonies. The first inaugural ball, held in Long's Hotel on March 4, 1809, was a brilliant affair. So many people attended that the air in the ballroom became unbelievably stuffy and they had to smash the windows to provide ventilation.

4 Bodies Are Found

SALINAS, Calif. (AP)—Bodies of four men, their skulls broken, were found in a field Thursday. Undersheriff Carol Joy said autopsies showed that holes were made by an instrument such as a ball-peen hammer. The victims had not been robbed.

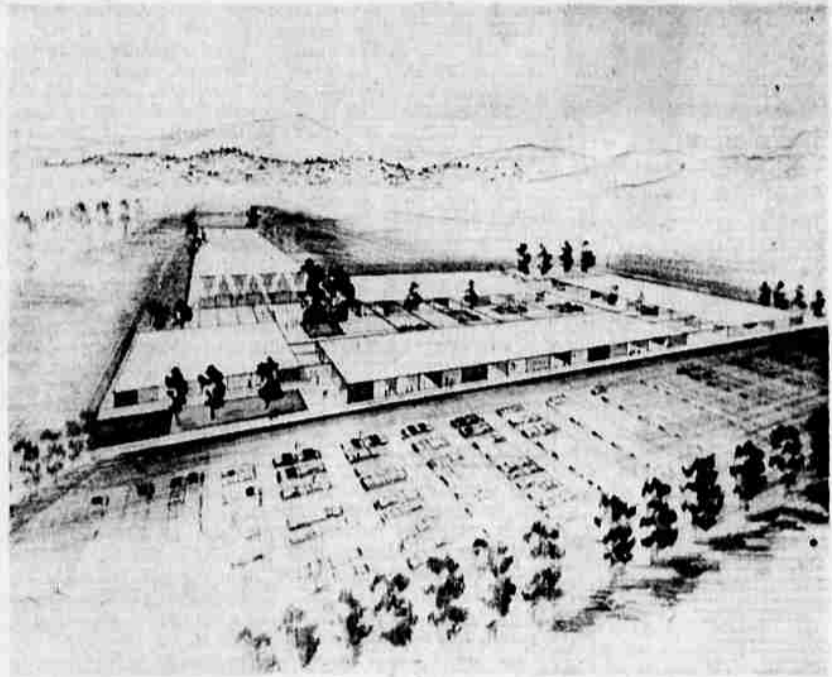
None of the victims had been identified.

A woman who lives nearby, Mrs. Freeman Arbo, said she saw five men drunk and apparently quarreling at the murder site when she went outside to feed her chickens the night before.

The men's bedrolls and empty wine bottles were strewn about the site, a camping spot for itinerants, authorities said.

QUEEN STARTS TOUR

LONDON (UPI)—Queen Elizabeth and Prince Philip take off today on a 39-day tour of the Middle and Far East including India and Pakistan, the first any British monarch has paid to these two nations since they achieved independence in 1947.



PLANS FOR A GIANT NEW SHOPPING CENTER moved from the planning to the formation stage yesterday. The James F. Stilwell Company, real estate brokers, announced plans for construction of the big shopping center to begin in late spring or summer. This company is exclusive leasing agent for the center which will be



James F. Stilwell of the real estate firm handling the negotiations, and William S. Curtis, representing a syndicate of investors from the Bay Area. At right, the actual site of the new shopping center which will eventually cost four million dollars is examined first-hand. Left to right are John Howard, architect; Don Sloan and



Local retailers are being given first opportunity for space in the shopping center which will have parking space for about 2,000 cars and be built in a mall-type arrangement.

Kennedy Inaugurated In Impressive Ceremony

\$4 Million Shopping Center Plans Are Announced

Proposed plans for a four million dollar shopping center were unveiled Thursday afternoon in the offices of James F. Stilwell and Company, real estate brokers, 517 Main Street.

102 Cheat Death In Airliner Crash

NEW YORK (AP)—A jet airliner crashed Thursday night seconds after taking off in a wind-whipped snowstorm. The huge ship's speed sent it slamming across a highway, clipping an auto and skidding in flames into a marsh.

Of the 106 persons reported aboard, 102 escaped death, although at least 26 were injured, several critically. The dead tentatively were identified as four of the eight crew members - three men and the woman purser. Sixty-one of the 98 passengers aboard the four-engine airliner are residents of the United States.

The airline, a DC8B of Aeromexico, went down at 8:25 p.m. It was bound nonstop for Mexico City.

One survivor, G. Terry Sechrist of Farmington, Conn., said the plane got about 50 feet in the air, then skidded down. Other survivors weren't certain if the plane ever got off the ground. Idlewild Airport observers said the \$3-million craft had to get aloft to clear a concrete fence at the end of the runway. The plane did hit a wire fence just beyond the concrete barrier. Sections of the wire fence were embedded in the wreckage. The front section of the plane became enveloped in flames.

The Civil Aeronautics Board and the Federal Aviation Agency began on-scene investigations in an attempt to learn the cause of the crash.

The one person aboard who might have the answer is William B. Poe, 52, of Miami, Fla. check pilot aboard the plane. But Poe's condition early today at St. Joseph's Hospital in Queens was described as "still critical."

Noting that the plane took off in a blinding snowstorm with winds up to 25 miles per hour, Rep. Steven B. Derouin, R-N.Y., said in a statement from Washington:

"Next week I will introduce some legislation to make it mandatory that no takeoff or landings of planes will be allowed unless visibility is 2 1/2 miles and the minimum ceiling is 2,500 feet."

Derouin is a member of the House subcommittee on transportation and aeronautics.

Police tentatively identified the bodies found in the wreckage as those of Capt. Ricardo Gonzales, the pilot; First Officer Antonio Ruiz Bravo; Second Officer Javier Alvarez Bacha; and Gloria Sanchez Herrejo, the purser.

The modernistic shopping center is planned for a 30-acre area that lies between South Sixth Street and Shasta Way along both sides of Avalon Street.

Initial plans call for construction of more than 200,000 square feet of building, with plans for eventual space exceeding twice that amount.

The initial phase of construction is expected to get underway in late spring or summer.

Plans call for a mall-type construction with five or six large structures grouped around the mall and parking space for about 2,000 cars planned around the perimeter of the area.

Curtis indicated that it will be exclusively a retail center, with planning calling for a supermarket, drugs, variety, department store and other businesses as well as personal service operations and other of this type.

He indicated that negotiations were now underway with some firms for space in the center, but that first consideration for space would go to local firms. He also stated that there is still uncommitted space allocation in the center.

The James F. Stilwell Company is exclusive leasing agent for the center and is handling all negotiations.

The architectural firm of Morrison, Howard and Starbuck, Engineer, have drawn plans for the center, and will handle this phase of the development.

Curtis also said local people would be used as much as possible in the construction phase of the center.

When queried as to why the

firm selected the Klamath Falls area for such a development, Curtis said, "We made a thorough study of the Klamath Falls trading area. We checked such things as per capita income, potential future growth, traffic pattern, existing facilities of this type. These factors determined not only the particular area, but also the particular site that we selected."

Curtis also explained, "Business here in Klamath Falls and vicinity is of a stable nature and the long term outlook appears very good. You might term this 'a typical American city' since it is growing in an orderly manner."

"There is a definite need here for a major shopping center, and the fact that this is a steadily growing community had a big bearing on its selection," he concluded.

Eventual plans call for a substantially larger center than will be constructed initially, and Curtis indicated that the unused land would be developed as future need arises, with an eye to future expansion of the center rather than the addition of other commercial structures.

A complete brochure of Klamath Falls and adjacent areas as well as detailed statistics on population centers, traffic trends and other factors was prepared for the investment group by the Stilwell firm. It is one of the most comprehensive studies of the area yet documented and provided the investing group with much of the information they needed to enable them to make a decision on this move.

A definite figure on the cost of the initial phase of the program of 200,000 square feet of space could not be ascertained, but it was developed that the entire program when completed would be about a four million dollar investment.

The area of the proposed shopping center lies within the confines of the city of Klamath Falls.

It is adjacent to the recent Rickfall's housing development, and less than a block from the newly built Lucile O'Neil School.

Membership of the association will ballot by mail to elect a five man executive committee to complete the governing group. The five will be elected from 10 nominees. The 10 are Chuck Burman of Sears, Jim Parks of Newberry's, Larry Whytal of Whytal's, Rod Bell of Bell's Hardware, Gene Favell of Gene's Men's Store, Don Radke of Weistfield's, Dick Hicks of Market Basket, Bob Goshall of Wards, Lowell Jones of Jones' Office Supply and Noel Flynn of Pay Less Drug.

The group voted to sponsor a retail sales clinic for store personnel in conjunction with the Oregon Retailers Association and University of Oregon. Timing and details for the five-week course will be worked out soon with the university. Vern Owens presented the plan.

Planning for a Fourth of July parade was assigned to a committee of Jim Parks, chairman; Frank Hales and Lew Wayburn by Beach.

Spring opening promotion was assigned to Harry Glesin, chairman; Gene Favell, Larry Whytal and Walt Kennett, with instructions to report back at the next merchants meeting.

Customer parking plans were reported by Charlie Schuss, Lew Wayburn, Greer Drew, Al Hattan and Noel Flynn of the Park and Shop Corporation.

"We want to build this into a city-wide parking plan for all downtown merchants with all

Appeals To Reds For Peace Quest

WASHINGTON (AP) — A deadly serious John F. Kennedy became president today in deadly times with an eloquent plea for the Communists to join him in a quest for peace lest all humanity be destroyed.

At the cold, windswept, snow-covered Capitol the old order left and the new came in.

Kennedy, at 43 the youngest elected president in our history, took the oath as the nation's 35th chief executive from Chief Justice Earl Warren at 12:51 p.m.

The simple, impressive ceremony took but a moment, and Kennedy immediately plunged into the world problems that will occupy most of his thoughts during the next four years.

The President began his inaugural address with a vow that this nation would remain strong.

"Let every nation know," he said, "whether it wish us well or ill, that we shall pay any price, bear any burden, meet any hardship, support any friend or oppose any foe in order to assure the survival and success of liberty."

He never mentioned the Communists by name when he said:

"To those nations who would make themselves our adversary, we offer not a pledge but a request: that both sides begin anew the quest for peace, before the dark powers of destruction unleashed by science engulf all humanity in planned or accidental self-destruction."

Nearly all the notables in the nation were here—governors, senators, representatives, Supreme Court justices. A few, including former President Herbert Hoover, were kept away by Thursday night's snowstorm.

But ex-President Harry S. Truman was on the inaugural stand, beaming to see a Democrat take over the White House again after eight years of Republican rule.

And Dwight D. Eisenhower, at 70 the oldest president in U.S. history, listened quietly as his youthful successor confidently said:

"Let the word go forth from this time and place, to friend and foe alike, that the torch has been passed to a new generation of Americans—born in this century, tempered by war, disciplined by a cold and bitter peace, proud of our ancient heritage—and unwilling to witness or permit the slow undoing of those human rights to which this nation has always been committed, and to which we are committed today."

There was no immediate explanation, but Kennedy, who had arrived at the Capitol early, did not come on to the inaugural stand until 12:12 p. m., or 12 minutes late.

Even then the program wasn't ready to begin, and there was considerable milling about on the platform.

Eisenhower and Kennedy didn't seem to mind. They chatted amiably and at times energetically.

Neither smiled much. Mostly, Kennedy listened soberly, squinting into the sunlight made exceptionally bright by the snow.

The program finally got underway—20 minutes late.

There were the prayers from leaders of four faiths, Roman Catholic, Protestant, Jewish and

Kennedy during his talk.

Beach Will Head Local Merchants

Bob Beach of Beach's Jewelers was elected president of the Klamath Merchants Association and Frank Bogatay of Bogatay's shoe store was elected vice president, at a meeting of the group Thursday afternoon at the Chuck Wagon restaurant.

A meeting of the original 40 signers of the Park and Shop agreement will be scheduled for next week for the purpose of electing directors and officers for operation and promotion of the parking plan, Beach announced.

Special television cameras and other equipment have been brought from the AEC's Oak Ridge, Tenn., and Los Alamos, N. M. laboratories.

"It is hoped," the AEC said, "that this equipment will enable determination of the status of the reactor, especially the water level and condition of the fuel elements and control rods which are assumed to have been disarranged by the explosion."

"Once the reactor status is definitely established, action can be taken safely and with certainty to remove the possibility of further criticality, if such possibility exists." Criticality means the possibility of a further chain reaction.

Special television cameras and other equipment have been brought from the AEC's Oak Ridge, Tenn., and Los Alamos, N. M. laboratories.

"It is hoped," the AEC said, "that this equipment will enable determination of the status of the reactor, especially the water level and condition of the fuel elements and control rods which are assumed to have been disarranged by the explosion."

"Once the reactor status is definitely established, action can be taken safely and with certainty to remove the possibility of further criticality, if such possibility exists." Criticality means the possibility of a further chain reaction.

Special television cameras and other equipment have been brought from the AEC's Oak Ridge, Tenn., and Los Alamos, N. M. laboratories.

"It is hoped," the AEC said, "that this equipment will enable determination of the status of the reactor, especially the water level and condition of the fuel elements and control rods which are assumed to have been disarranged by the explosion."

"Once the reactor status is definitely established, action can be taken safely and with certainty to remove the possibility of further criticality, if such possibility exists." Criticality means the possibility of a further chain reaction.

Special television cameras and other equipment have been brought from the AEC's Oak Ridge, Tenn., and Los Alamos, N. M. laboratories.

"It is hoped," the AEC said, "that this equipment will enable determination of the status of the reactor, especially the water level and condition of the fuel elements and control rods which are assumed to have been disarranged by the explosion."

"Once the reactor status is definitely established, action can be taken safely and with certainty to remove the possibility of further criticality, if such possibility exists." Criticality means the possibility of a further chain reaction.

Special television cameras and other equipment have been brought from the AEC's Oak Ridge, Tenn., and Los Alamos, N. M. laboratories.

"It is hoped," the AEC said, "that this equipment will enable determination of the status of the reactor, especially the water level and condition of the fuel elements and control rods which are assumed to have been disarranged by the explosion."

"Once the reactor status is definitely established, action can be taken safely and with certainty to remove the possibility of further criticality, if such possibility exists." Criticality means the possibility of a further chain reaction.

Spectators Bundled Up For Parade

WASHINGTON (AP) — Spectators lined Pennsylvania Avenue today, bundled up against the biting cold, to watch the inaugural parade for incoming President John F. Kennedy.

Twenty-degree cold and an 8-inch snow failed to dampen spirits as the early comers of an expected large throng gathered along the historic route and at the Capitol, scene of the swearing-in ceremony.

The 1 1/2-mile parade route from the Capitol to the White House had been cleared, right down to the pavement, by an army of men and a huge array of equipment borrowed from the Army.

Democrats, celebrating their return to executive power in Washington, jubilantly decided against curtailing plans for the colorful parade of men and missiles, bands and beauties, and even a Navy PT boat.

Three thousand workmen worked all night in the cold and snow to clear the route. At least 550 snowplows, dump trucks and other removal equipment were mustered.

Officers booked on arson charges the Rev. Leonard Rhoads, 44, whose First Southern Baptist Church in Palo Alto was destroyed by fire Dec. 13. Deputy Dist. Atty. Harry Parker said the minister also admitted burning down his church at Fontana Nov. 16, 1956.

Officers booked on arson charges the Rev. Leonard Rhoads, 44, whose First Southern Baptist Church in Palo Alto was destroyed by fire Dec. 13. Deputy Dist. Atty. Harry Parker said the minister also admitted burning down his church at Fontana Nov. 16, 1956.

Officers booked on arson charges the Rev. Leonard Rhoads, 44, whose First Southern Baptist Church in Palo Alto was destroyed by fire Dec. 13. Deputy Dist. Atty. Harry Parker said the minister also admitted burning down his church at Fontana Nov. 16, 1956.

Officers booked on arson charges the Rev. Leonard Rhoads, 44, whose First Southern Baptist Church in Palo Alto was destroyed by fire Dec. 13. Deputy Dist. Atty. Harry Parker said the minister also admitted burning down his church at Fontana Nov. 16, 1956.

Officers booked on arson charges the Rev. Leonard Rhoads, 44, whose First Southern Baptist Church in Palo Alto was destroyed by fire Dec. 13. Deputy Dist. Atty. Harry Parker said the minister also admitted burning down his church at Fontana Nov. 16, 1956.

Officers booked on arson charges the Rev. Leonard Rhoads, 44, whose First Southern Baptist Church in Palo Alto was destroyed by fire Dec. 13. Deputy Dist. Atty. Harry Parker said the minister also admitted burning down his church at Fontana Nov. 16, 1956.

Officers booked on arson charges the Rev. Leonard Rhoads, 44, whose First Southern Baptist Church in Palo Alto was destroyed by fire Dec. 13. Deputy Dist. Atty. Harry Parker said the minister also admitted burning down his church at Fontana Nov. 16, 1956.

Officers booked on arson charges the Rev. Leonard Rhoads, 44, whose First Southern Baptist Church in Palo Alto was destroyed by fire Dec. 13. Deputy Dist. Atty. Harry Parker said the minister also admitted burning down his church at Fontana Nov. 16, 1956.

Officers booked on arson charges the Rev. Leonard Rhoads, 44, whose First Southern Baptist Church in Palo Alto was destroyed by fire Dec. 13. Deputy Dist. Atty. Harry Parker said the minister also admitted burning down his church at Fontana Nov. 16, 1956.

Copco, PP&L Close Deal On Exchange Of Stocks

PORTLAND (AP)—Two power companies today announced they have reached a detailed agreement—mostly covering stock exchange—on their merger.

Boards of Directors of Pacific Power & Light Co. and California Oregon Power Co. said special stockholders' meetings will be held March 14 to approve the merger.

The companies had reached agreement earlier on the exchange of common stock — 12 shares of Pacific Power for each COPCO share. Today's announcement set the exchange rate of various preferred stocks and authorized Pacific Power — the surviving company in the merger — to issue additional shares of stock equal to the number needed for the exchange.

Approval of the merger requires a majority vote of PP&L's shareholders, including a majority of preferred stock, and a two-thirds majority of both common and preferred

shares of COPCO.

The merger must then be approved by state regulatory agencies and the Federal Power Commission.

"Holders of COPCO's \$100 par value non-callable seven per cent and six per cent preferred stocks would receive respectively share for share of a new series of Pacific's \$100 par value non-callable 7.00 per cent or 6.00 per cent serial preferred stock.

"Holders of COPCO's \$100 par value 4.70 per cent series preferred stock would receive for each share one share of a new series of Pacific's \$100 par value 5.00 per cent serial preferred stock; and holders of COPCO's \$100 par value 5.10 per cent series preferred stock would receive for each share one share of a new series of Pacific's \$100 par value 5.40 per cent serial preferred stock."



BOB BEACH ... heads merchants

'Runaway' Is Blamed

WASHINGTON (AP) — The Atomic Energy Commission has established that the explosion of an atomic reactor in Idaho Jan. 3 was caused by an accidental "runaway" reaction.

The explosion was nothing like an atomic bomb blast, but three men were killed and the reactor chamber still cannot be entered because of radiation danger.

The AEC announcement Thursday said technicians are striving to devise a way of "remotely looking into the reactor room and the reactor vessel."

Special television cameras and other equipment have been brought from the AEC's Oak Ridge, Tenn., and Los Alamos, N. M. laboratories.

"It is hoped," the AEC said, "that this equipment will enable determination of the status of the reactor, especially the water level and condition of the fuel elements and control rods which are assumed to have been disarranged by the explosion."

"Once the reactor status is definitely established, action can be taken safely and with certainty to remove the possibility of further criticality, if such possibility exists." Criticality means the possibility of a further chain reaction.

Special television cameras and other equipment have been brought from the AEC's Oak Ridge, Tenn., and Los Alamos, N. M. laboratories.

"It is hoped," the AEC said, "that this equipment will enable determination of the status of the reactor, especially the water level and condition of the fuel elements and control rods which are assumed to have been disarranged by the explosion."

"Once the reactor status is definitely established, action can be taken safely and with certainty to remove the possibility of further criticality, if such possibility exists." Criticality means the possibility of a further chain reaction.

Special television cameras and other equipment have been brought from the AEC's Oak Ridge, Tenn., and Los Alamos, N. M. laboratories.

"It is hoped," the AEC said, "that this equipment will enable determination of the status of the reactor, especially the water level and condition of the fuel elements and control rods which are assumed to have been disarranged by the explosion."

"Once the reactor status is definitely established, action can be taken safely and with certainty to remove the possibility of further criticality, if such possibility exists." Criticality means the possibility of a further chain reaction.

Special television cameras and other equipment have been brought from the AEC's Oak Ridge, Tenn., and Los Alamos, N. M. laboratories.

"It is hoped," the AEC said, "that this equipment will enable determination of the status of the reactor, especially the water level and condition of the fuel elements and control rods which are assumed to have been disarranged by the explosion."

"Once the reactor status is definitely established, action can be taken safely and with certainty to remove the possibility of further criticality, if such possibility exists." Criticality means the possibility of a further chain reaction.



PRESIDENT KENNEDY

Finally, came the point of all this proceedings, taking the oaths.

Lyndon B. Johnson's turn came first. The tall Texan, who had such high hopes of being president himself, was sworn in as vice president by his old friend, fellow Texan and political coach, House Speaker Sam Rayburn at 12:41 p.m.

Kennedy slipped out of a topcoat protecting him against the 22-degree weather and stepped forward.

Facing Chief Justice Warren, and speaking in a loud, clear voice, he repeated his oath to uphold the Constitution and took on the awesome job of leadership.

When he finished the oath, he turned to now ex-President Eisenhower and smiled broadly. Eisenhower smiled back and they shook hands.

Kennedy delivered his speech with the finger-pointing, hand-chopping gestures which became so familiar during the political campaign.

"I do not shrink from this responsibility—I welcome it," he said.

There were scattered cries of "Jack!" as the crowd interrupted Kennedy during his talk.