

THE HOUSE OF THE WEEK

Ranch Has Homey, Midwestern Flavor

By DAVID L. BOWEN

There's an air of warm Midwestern hospitality about this neat three-bedroom ranch, designed by Architect Elmer Gylleck of Elgin, Ill.

The living and dining room are in line. Contrary to the usual arrangement which places these rooms parallel to the front wall, in this home they run from front to back between the bedroom section and the service area.

One of the extras this makes possible in B-47 in the House of the Week series is a television room separated from the dining room by a folding partition. If the TV watchers are a minority, the accordion doors can be closed to separate the viewers from the talkers. At other times, the doors can be opened — making the TV screen visible from dining room and even the kitchen.

With a door opening into the bedroom hall, the TV room also can double as a guest bedroom.

Architect Gylleck points out that the back-to-back plumbing of the two full baths in the bedroom section holds the cost of this luxury to a minimum. The closet in the master bedroom is extra large, taking up almost an entire wall.

There's convenient access from the two-car attached garage through the service entry into the breakfast space which is part of the long kitchen. Basement stairway, is directly opposite the



MIDWESTERN CHARM: House of the Week B-47 was designed by Architect Elmer Gylleck of Elgin, Ill. There are three bedrooms and a TV room among the total of seven rooms in 1,662 sq. ft. of living space.

B-47 has seven rooms and the total living space is 1,662 sq. ft. Over-all dimensions are 69' 8" in width by 34' 8" in depth. If desired, the home could be built on a slab foundation and the basement eliminated. In this case, heating equipment would go into the space now marked for basement stairs.

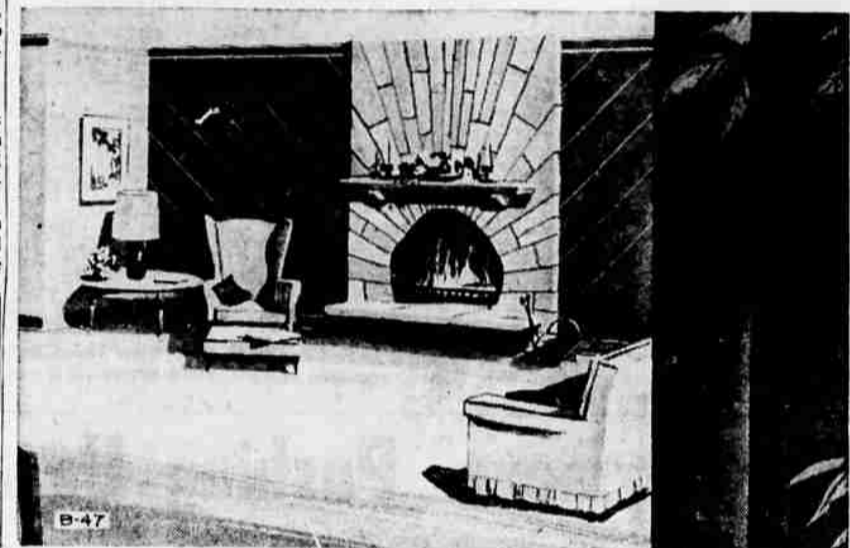
Additional Details

The exterior of the home is primarily brick veneer, with some stone veneer and vertical wood siding on the front elevation.

The front entry is bounded on one side by a decorative wood louver. The living room fireplace

is of a distinctive sunburst design, with lines radiating from the hearth first in the stone of the chimney and then in the wood panelling covering the adjoining wall. Sliding glass doors lead from the dining room onto the rear terrace.

The closet shown at the rear of the garage could either be used for storage or, if desired, could be equipped with plumbing to make a convenient lavatory.



CENTER OF ATTRACTION: Artist's conception shows the "sunburst" design of the living room fireplace, with radiating lines in masonry, continued through diagonal lines of wood panelling.

B-47 STATISTICS

Stone and brick veneer impart a distinction to this seven-room ranch. There are three bedrooms, two baths, television room, in line living and dining rooms and a large kitchen with breakfast space.

Living area totals 1,662 sq. ft. Over-all dimensions are 69' 8" in width by 34' 8" in depth. Entry foyers have been placed at both front and side entrances.

Send this coupon for your STUDY PLAN

YOU CAN GET a study plan for The House of the Week by filling in your name and address on the coupon on this page and sending it with 50 cents to this newspaper.

This study plan shows each floor of the house together with each of the four elevations, front, rear and sides of the house. It is scaled at 1/8-inch per foot. It includes a guide on "How to Get Your House Built."

You can take this study plan to your bank or other mortgage lender and to your builder and get rough estimates on the cost of construction in this area as well as an idea of the cost in relation in your budget.

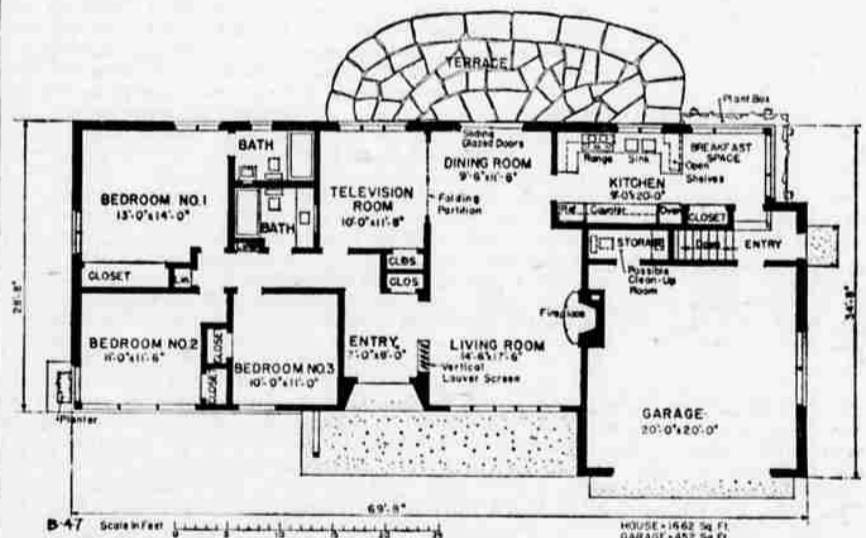
With this information you will know whether you will want to proceed with construction by ordering working blueprints direct from the architect and asking for bids for the work.

STUDY PLAN ORDER COUPON

Building Editor:
Enclosed is 50 cents. Please send me a copy of the study plan of **The House of the Week B-47**

(please print)

Name _____
Street _____
City _____ State _____



FLOOR PLAN: Front to rear in-line living and dining rooms, with connecting TV room, provide large entertainment area. Long kitchen has attractive breakfast space against corner windows.

Douglas Fir Area Characterized 'Underdeveloped'

Characterized as an underdeveloped timber supply area, the 14 million-acre Douglas fir region of Oregon and Washington has been pictured as a "matter of local concern and a national problem."

"There is too much capital investment in timber inventory and too little in advance roads to capture the full timber potential. The prospect of a timber supply decline in the years to come is the real mark of the region's underdevelopment," declared John Fedkiw, Pacific Northwest Forest and Range Experiment Station, Portland, Ore. He made his challenging statements before timber-

land managers assembled here from Dec. 7-9 for the 51st annual Western Forestry Conference.

"There are at least five million acres of young timber ready for partial harvest. Not more than a few per cent have been put under management. There are eight million acres of older timber where most of the growth is lost annually to mortality. The increased timber supply that these opportunities constitute are virtually untapped," continued Fedkiw.

He supported his statements with bristling timber statistics that clinched the plea for more road construction. Fedkiw said

that the opportunities for increased utilization through advance roading in the next 40 years would approximate 100 billion board feet, about 2.5 billion board feet of more wood per year, from capture of mortality losses.

This does not include yields of live timber from thinning, prelogging or sanitation harvests. The potential from this source is at least an additional 100 billion board feet. About half of this amount would be an extra yield for the next 40-year period, since the stands from which it is harvested would not be clear cut until after the year 2000.

The total opportunity for increased utilization in the next 40 years, therefore, is about 150 billion board feet—almost four billion feet a year.

Fedkiw stated that to capture all this would be impossible. But studies by the Pacific Northwest Forest and Range Experiment Station indicate that a quarter of this potential can be realized by systematically advance roading 2.5 million acres of young growth and 2.5 million acres of old growth in the next 40 years. To capture half the potential would require advance roading four million acres of young growth and four million acres of old growth.

On large industrial forest properties, where roading has been pushed aggressively, rates of return as high as 10 per cent, after taxes, have been calculated for advance road investments varying from \$5,000 to \$15,000 per mile. Such earnings are competitive with other investment opportunities within industrial forestry firms. On industrial tree farms, it has been estimated that advance road systems and partial harvests can increase allowable cuts as much as 10 per cent.

Fedkiw stated that the national forest road program lacks flexibility needed to achieve maximum wood yields from 1.6 million acres of young timber and nearly four