

Siskiyou Sights Attracting Tourists



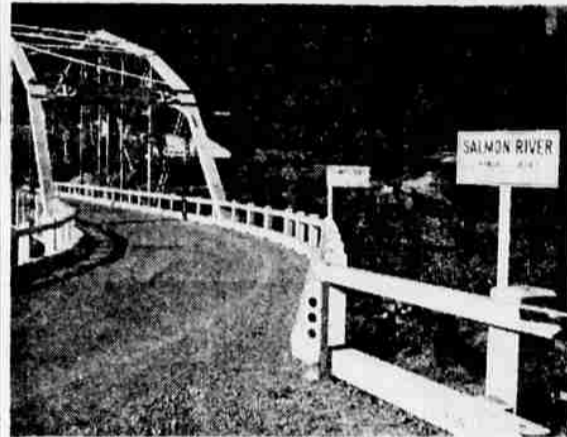
THE SALMON RIVER in a twisting canyon in the mountains of southwestern Siskiyou County flows its emerald way to the Klamath River in a series of tossing rapids and still, deep pools like these. The river gets its name from heavy salmon spawning runs in the fall. — Photo by Peggy Walsh.



A ONE-ROOM SCHOOL near Callahan still serves children of farm families in the area. — Photo by Peggy Walsh.



HAPPY CAMP THRIVES, even on a Sunday morning, since timber replaced gold as the community's major source of economy. A handful of residents a few years ago formed the nucleus of a town that grew to considerable size nearly overnight on the Klamath River about 60 miles west of Yreka. — Photo by Peggy Walsh.



SOMES BAR is one of the colorful little communities that hang on the banks of the Salmon and Klamath Rivers in southwestern Siskiyou County. A scattering of tourists and sportsmen helps keep the old towns going since gold mining subsided. Logging and lumbering help, too. — Photo by Peggy Walsh.



LIFE IN THE BACKWOODS can be exciting and carefree. Mrs. Peggy Walsh, Duns-muir, encountered these unidentified mountaineers on the road to Somes Bar in Siski-you County's Coast Range Alps during a recent tour of the remote area.

Here's A Fast Method Boosting Plug Power

By MR. FIX

Written for

Newspaper Enterprise Assn.

It's almost an accepted fact that no house has enough electrical outlets, and those it has are in the wrong places.

This has given rise to the trailing extension cord, the octopus-like, three-way cube tap, and a generally confused and unsafe situation. The only alternative for the homeowner was to knock holes in the wall and install additional outlets.

Plug Power

But in the last few years several manufacturers have come up with types of surface-mounted strip outlets. The strip contains two wires in a plastic channel. It can be mounted on the wall along the baseboard, on the floor or along a counter top. Outlets can be installed almost anywhere along its length.

One thing it does not do is to increase the amount of power available. Such a strip connected to a 15-amp circuit can still carry no more than 15 amps, no matter how many outlets you add. So resist the temptation. Don't install more outlets than a circuit can handle.

Plug-in strips vary widely. There is one that is nothing more than a plastic strip with a cord and plug which is plugged into an existing outlet. The strip can handle about three items, is fastened down with two screws.

Up Stairs, Too

Others are more versatile, can be run around a room in an unbroken line, can turn corners and go up stairs.

One type consists of two wires in a plastic jacket and surface-mounted outlets. Whenever an outlet is desired, the strip is cut, the wires exposed and the outlet snapped on. A plug can be snapped on at one end and plugged into an outlet.

Versatility

Another style is more elaborate but also more versatile. Wires are contained on opposite edges of the strip, remain covered at all

times. Outlets can be added anywhere, changed anytime by twisting into place in the tracks that cover the wires.

The system comes with special outlets, elbows, tees and end caps. A special adapter takes the place of your present outlet. Wires in the adapter are connected to house wires. With an elbow or tee plugged into the adapter the strip can run in one or both directions.

The strip is flexible enough to turn corners. But if you wish to change directions, you must use an elbow. Caps are used to cover the ends of the strips.

Watch Out

One word of caution. Remove the line fuse when installing any of these surface lines. You may forget and cut the strip while it's hot.

The strips are held down with screws, generally have holes provided for them at regular intervals.

Surface outlets are particularly welcome along the work area in the kitchen for toaster, mixer and blender. In the bedroom you might run one back of your bed for reading lamp and outlets for clock and radio.

LUCKMAN'S BOY PLAYS

SYRACUSE, N.Y. (AP)—One of Syracuse University's prospective football quarterbacks is Bob Luckman of Chicago. The freshman is the son of Sid Luckman, former Columbia and Chicago Bears star.

Save \$5 - move yourself

RENT a new U-DRIVE truck

Local or Long Distance

- PICKUPS • VANS
- FLATBEDS
- Pallet Dollies Available

Beehive System

BEACON

SERVICE STATION

1201 E. Main TU 4-6344

ARCHIE'S A POLITICIAN

SAN DIEGO, Calif. (AP) — Commenting on his defeat for a short-term as assemblyman in the state legislature, the veteran pugilist, Archie Moore, said: "Good things come to those who wait."

Moore, 47, wasn't announcing he would run again, but was remarking on the victory of his opponent, George Laphorne, 70, real estate man. It was his first political victory after numerous tries.

"Mr. Laphorne waited a long time," said Moore. "I am glad he will have the honor of holding this office."

Two Presidents of the United States — Theodore Roosevelt and Woodrow Wilson—were awarded Nobel Peace Prizes.