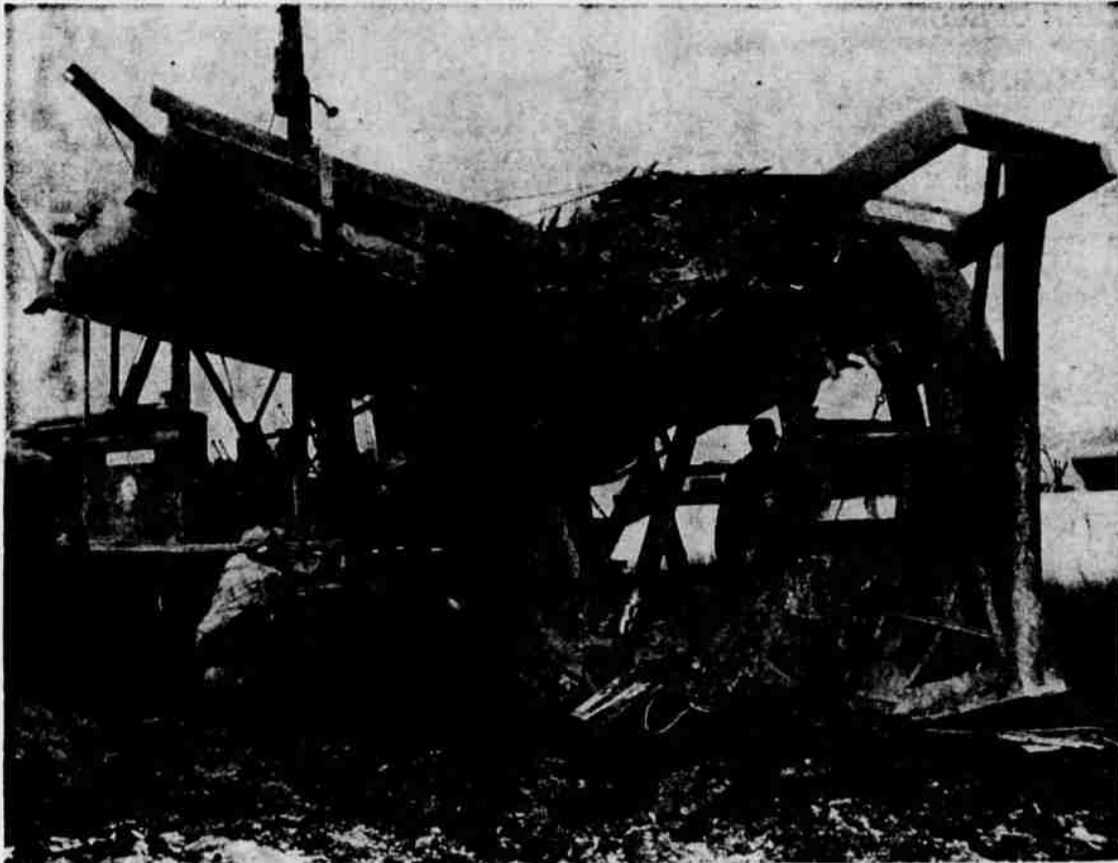


# Pictures Tell Story Of Pipeline Project



**A TRENCH DIGGING MACHINE** is a grotesque looking contraption but it does an efficient job of biting off huge chunks of earth. The circular part of the machine

is equipped with diggers, which deposit earth on a belt to be thrown clear of the trench. A bulldozer moves the machine along the line.

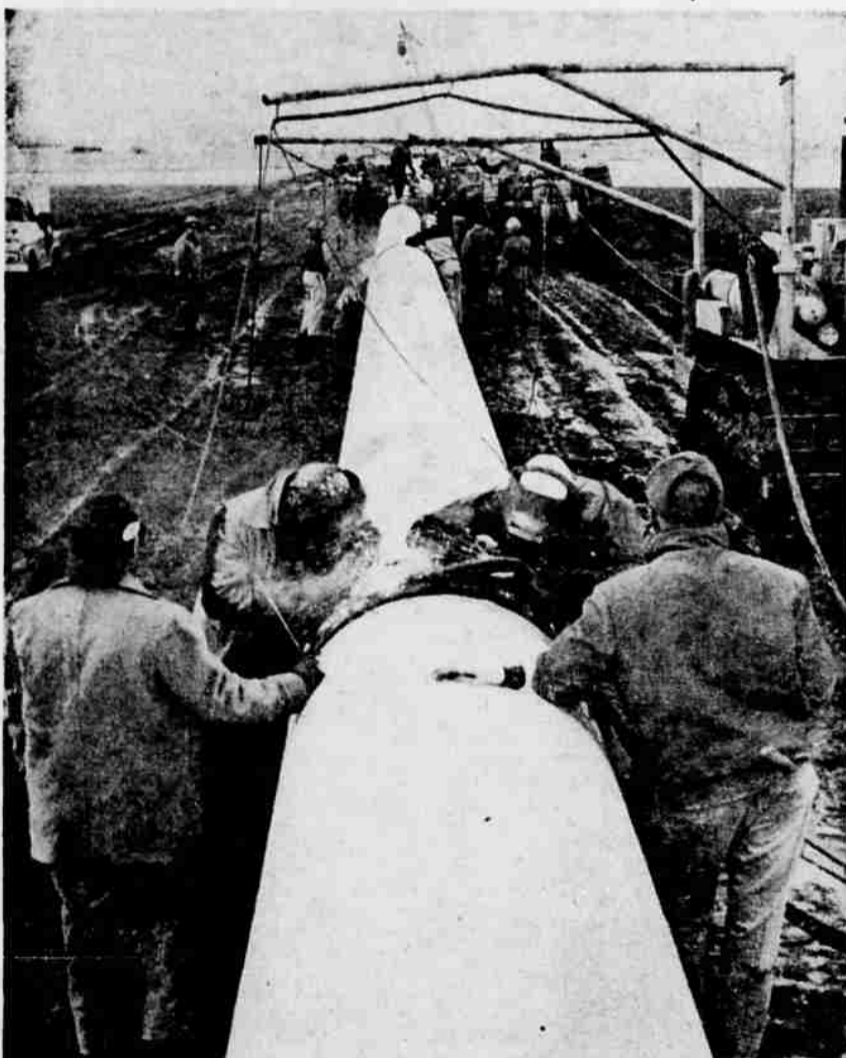
This series of pictures taken by Herald and News photographer Wes Guderian graphically shows the scope of the Alberta-California Natural Gas Pipeline Project.

Work is currently progressing in the area west of Klamath Falls between Malin and Bonanza and south into California. The pipeline will bring natural gas to the area from fields in the eastern foothills of the Rocky Mountains in Alberta, Canada.

These pictures show crews and men of Western Pipeline Co., the corporation responsible for pipe laying in Oregon. H. C. Price is the California and Washington pipe laying contractor.

The project is expected to be a boost to the economy of the Klamath Basin. Its impact is already being felt in the more than 50 accounts that have been opened up in local businesses. Reduced gas rates are also predicted when the project is completed in the fall.

Most pipeline workers follow the projects around the country and are home for only a few months a year. Some local men are hired on clearing crews and for unskilled or semi-skilled jobs.



**A STEADY STREAM OF WORKERS** moves along the pipe as it takes shape and is made ready for the ditch. Welders are shown in the foreground with a patching crew at the next joint back. Further back, a lineup crew brings in more pipe and connects the sections. Western Pipeline Co. is responsible for laying pipe in Oregon and H. C. Price Co. does the same job in California. Both companies have long experience in pipeline projects.



**POLISHING AND SMOOTHING** the pipe is the job of Don Brehm, shown here using an electric buffer on the end of a pipe section. This operation must be performed before two sections can be joined together.



**ALL SIDES OF THE PIPE** must be buffed and polished so that joints can be wrapped and coated with a tar compound. Here, Franklin Barr taking his turn beneath the pipe with a buffer. This picture also shows why safety is stressed on the job. Most workers wear steel helmets on the job to protect themselves.

Fiji Islands fire walkers use no tricks, the National Geographic Magazine says. Physicians who have watched the ceremony attribute the phenomenon of dancing on red-hot stone pits to self-hypnosis induced by deep faith.

**SHADE SEEMS RIGHT**  
CHARLOTTE, N.C. (AP) — An official of a downtown bank erecting a new skyscraper building here had queries about the shade of green paint being used to cover the steel girders. The paint, he replied, is currency green.

The Smithsonian Institution in Washington has an unsurpassed collection of 20,000 skulls. Among them are nearly 100 showing the effects of prehistoric surgery, performed perhaps to let out painful spirits, says the National Geographic Magazine.