

**HUGE PIECES OF PIPE** are being loaded onto trucks from the warehouse yards at Heaton Steel and Supply, 428 Spring Street. Here, Charles Heaton, left, and unidentified truck drivers wait while the crane loads another half-segment of pipe onto a truck. Each of these pieces weighs 12 1/2 tons. They are shipped here by railroad, warehoused, then taken by truck to Lewiston, 49 miles west of Redding, for use on the Trinity River Reclamation project. Lower left, Heaton uses a cigarette to show the thickness of the pipe, approximately 1 1/4 inches. Each segment is eight feet wide and 27 feet long.



**BLM Sells 3 Tracts At Auction**

Three tracts of timber located in Josephine and Douglas counties were sold by the Medford District of the Bureau of Land Management at an oral auction sale on Dec. 8. The total price for the 7,668,000 board feet included in the three tracts was \$142,175.40.

There was considerable competition for one of the tracts but the other two were sold without competition.

The high bid for 1,218,000 board feet located in the Galice area was a joint bid by Garfield Priests of Merlin and Vern Strong and Son of Wolf Creek. Their bid included an offer of \$33 per thousand board feet for the Douglas fir and \$37,925.75 for the total sale. Unsuccessful bidders were Bate Lumber Co. and Estramado and Son.

The Robert Dollar Co. of Glendale purchased the Douglas County tract, which contained 3,463,000 board feet for \$54,685.85 without competition. This tract is located in the West Fork Cow Creek area.

Bate Lumber Co. of Merlin also had no competition for 2,987,000 board feet located in the Galice area of Josephine County. They bid the appraised price of \$49,583.80.

According to John A. Carnegie, district sales officer, four tracts containing 10,629,000 board feet, appraised at \$229,408.45 will be offered for sale at the monthly district sale on Jan. 12. Two of these tracts are located in Jackson County and one each in Douglas and Josephine counties.

Since they are immune to their own poison, it is untrue that scorpions can commit suicide if cornered.

**Local Firm Warehouses Giant Pipe For Tunnel**

Some of the largest pipe ever seen in this area is being warehoused and shipped out from the Heaton Steel and Supply Company, 428 Spring Street.

The pipe will be used as tunnel liner at the Trinity Alps Reclamation project in California.

Seventeen feet in diameter, the pipe comes in two pieces, each piece eight feet wide and 27 feet long. Each piece weighs about 12 1/2 tons.

The metal is turned out at Gary, Ind., shipped by rail to Portland, Ore., where it is taken off the rails, treated, rolled into specified diameter, then back on the railroad cars for shipment to Klamath Falls.

Here it's unloaded, warehoused, then shipped by truck to the unloading site, about 49 miles west of Redding at Lewiston, where it will be welded together and then taken to the tunnel site for use.

Thus far, Heaton Steel and Supply has unloaded some 12 rail-

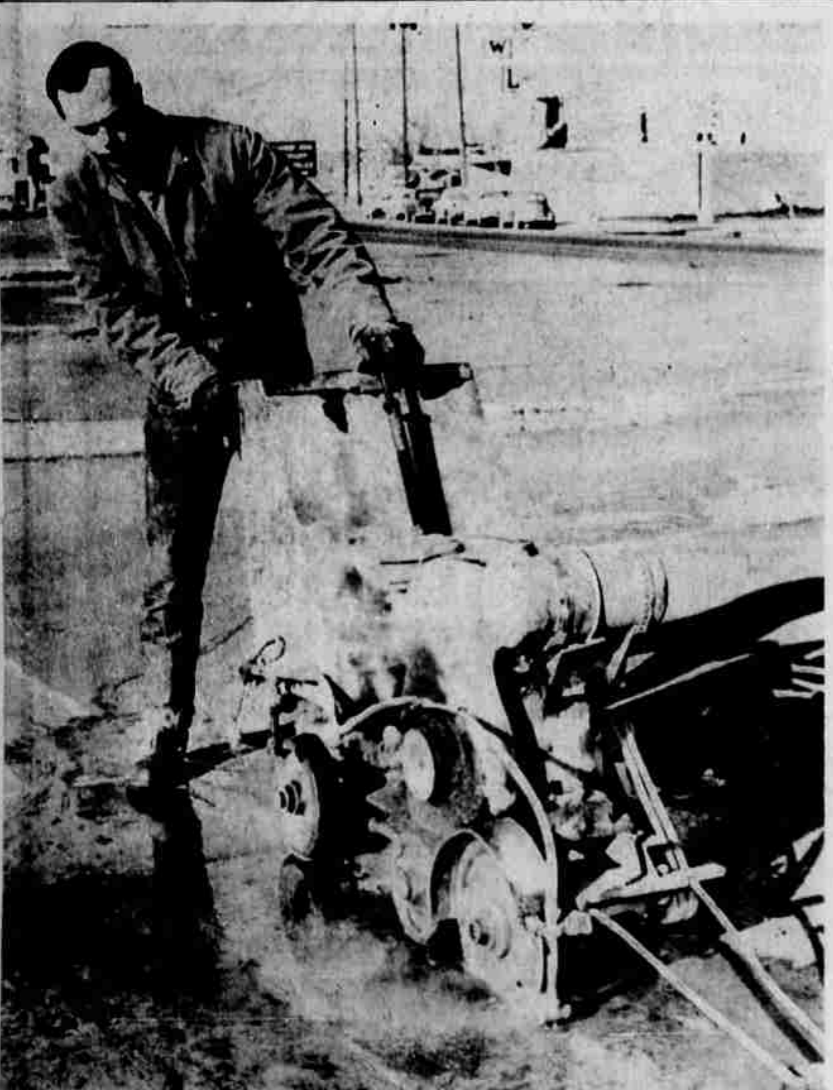
road cars and expects to handle from 40 to 60 more cars before the project is completed.

A freight advantage and the ability of Heaton Steel and Supply to handle the large pipe were the determining factors in selecting the Klamath Falls firm for this job.

**Wall Street Chatter**

Bache Co. has added Gulf Oil to the list of oil stocks it recommends for trading accounts. This issue, Bache says, is about to complete an impressive base formation and appears to have interesting trading possibilities over the next two to four months.

Walter K. Gutman of Stearns and Co. says there is very good opinion in analytical circles that American Telephone will raise its dividend to \$3.60 a few weeks before the annual meeting next May.



**A NEW TYPE MACHINE** was busy sawing a hole in the pavement of South Sixth Street, preparatory to installing cables for the street lights being erected at the intersection of South Sixth and Altamont, when Herald and News photographer was on duty. The signals are being installed also at the intersection with Summers Lane. Frank Mix is operating the machine. The Steck Electric Company of Medford has the contract for the street lights at a cost of \$21,000.



**Business Review**

By Floyd L. Wynne

**Company Offers New Plan For Marketing Old Patents**

By HENRY J. BECHTOLD  
UPI Financial Editor

NEW YORK (UPI) — Where there's a will there's a way. This old saying may well describe National Patent Development Corp., which is proving that there still are new and different ways to make money in America.

This recently-formed company's underlying purpose is to bring new ideas and products to market through the utilization of dormant patents.

These unused patents, according to company chairman Jess Larson, could pave the way for millions of dollars of new products and other technological advances.

Literally thousands of new developments are kept from commercialization because they are covered by patents not being utilized, the former War Assets Administrator declared.

The U.S. Patent Office annually issues more than 50,000 new patents and it currently has an estimated backlog of some 200,000

patent applications. However, only a fraction of all patented developments is ever commercialized, and of these, only a smaller fraction turn out to be profitable.

The problem today, Larson said, is that countless new products and applications are daily being uncovered as an offshoot of industrial research. These new developments customarily are patented, but they are not commercially exploited for the benefit of the public because they are not related to the principal business of the company that sponsored the research work. Or maybe the company does not foresee a market for them.

Meanwhile, other companies often are seeking the same or essentially the same idea which another company has patented but which it is not utilizing.

If these companies could be brought together—the one supplying use of the patent, the other supplying the need for it—everyone would benefit, Larson stated.

The problem here, he added, is to bring buyer and seller together to their mutual advantage. It is here that National Patent Development Corp. thinks it can be of invaluable assistance as an intermediary.

Not only can it bring interested companies together, Larson said,

but it also can investigate technological developments, supply legal and technical advice, and, where necessary, obtain financial assistance to bring these developments to the commercial stage.

Larson noted that many big organizations with patents not now being utilized are making these patents available to National Patent Development on a contractual basis.

These firms include American Machine & Foundry, AVCO, Chance Vought, Glidden, International Latex, Merck, Perkin-Elmer, A.E. Taley, Swift and Thiokol.

The great diversity of these companies suggests the wide range of fields in which patented developments can be put to work.

Larson concluded that countless discoveries can be translated into practical accomplishments and higher living standards if better use is made of our technical resources by utilizing existing discoveries and inventions.



DOUG NAPIER

**Napier Joins H&N Engraving**

New addition to the staff of the Herald and News is Douglas Napier, Portland.

Doug joined the staff several weeks ago, replacing Jack Metz in the Engraving Department. Metz has joined the Sacramento Bee in Sacramento.

Napier formerly worked for the Oregonian, prior to the recent strike, and prior to that was employed at the Journal for a period of six years.

A Canadian, Napier was born in Regina, Saskatchewan.

His wife, Margaret, and their three children, Lori, 6; Kathy, 4; and Roni, 2, have joined him. They reside at 835 North Laguna.

**Stations Give Carol Books**

"Deck the Halls," "Away in the Manger" and "Jingle Bells" are three of 11 yuletide traditional songs offered in a Christmas Carol Book now being distributed free to the public by Richfield service stations, according to Tom O'Harra, Richfield's agent.

The Richfield Carol Book contains words and music to the yule classics, but is only in a limited supply, O'Harra said. An additional feature is "The Story of Silent Night," an illustrated article on one of the most famous carols.



H. E. "Bud" STEINSEIFER

**Steinseifer Handles Mart**

New manager and operator of the Home Mart, 2030 South Sixth Street, is H. E. (Bud) Steinseifer. Steinseifer will also operate his electrical contracting business from the Home Mart in addition to supervising sales that include everything for the homemaker, the do-it-yourselfer and contractors.

The Home Mart will feature a custom kitchen cabinet shop handled by Chuck Thompson.

They will feature pre-fab kitchen cabinets, also, and are prepared to do the installation.

Phone number of the Home Mart remains TU 2-5885.

**Bank Picks Community Committee To Administer Trusts Dividends**

A charitable trust conceived nearly 20 years ago by J. G. Edwards, wealthy Central Oregon sheep baron, will become a reality early next year when the first distributions of cash from the fund are made by the First National Bank of Oregon.

Edwards died in 1945, leaving a substantial estate in trust for the care of his bedridden wife, Elizabeth, who was much younger than he. Mrs. Edwards died one year ago after an illness of many years.

The trust fund, which is invested principally in stocks and bonds, is valued in excess of \$600,000, according to Stetson B. Harman, vice president and senior trust officer.

As trustee for the fund, the bank is empowered to use its discretion in the distribution of the money, but the First National board of directors chose to appoint an advisory committee of community leaders to offer specific recommendations on disposition of the trust.

The directors felt that the best possible use would be made of the funds by presenting all requests to the committee for study and recommendation.

Portlanders on the advisory committee are Harold Wendel, president, Lipman Wolfe Co.; G. E. Cannon, president, Standard Insurance Co.; Rudie Wilhelm Jr., vice president and general manager, Wilhelm Warehouse Co.; Mrs. Joseph A. Minott, housewife; James H. Polhemus, retired chairman of Portland General Electric Co.; and Edward P. Stamm, retired Crown-Zellerbach executive, who was elected chairman of the committee.

In its initial sessions, the advisory committee unanimously decided it would limit distribution of funds to charity to the maximum extent of the trust for the present

and that only charities operating within the boundaries of Oregon would be considered for benefits, Stamm reported.

The advisory committee is expected to recommend benefits where they will do the most good based upon community needs, irrespective of requests for contributions which may be received by the committee, Stamm explained.

"In determining allocation of

benefits the committee will develop a program encompassing the consideration of all fields of charity, including but not limited to education, religion, health and relief of poverty," he added.

Edwards came to Portland in 1910 upon his retirement from the sheep business after having made notable contributions to the improvement of the grade of sheep raised throughout the country.



**WINNER OF TWO TICKETS** to the Shrine East-West Game in San Francisco is Hal Holman, left, Jim Allen, Herald and News editor, at right, supervised the contest with Arnie Migliaccio. The contest which ran for a 10-week period during the football season was sponsored by 26 Klamath business firms. Holman submitted the best entry of more than 7,000 received during the contest. In addition to the coveted tickets, Holman won \$30 in cash.



**NEW ALL-WOOD** office addition (left) at International Paper Company's Weed Branch features interior decorative wall paneling of several wood species. The recently completed structure is connected to the larger original IP office building.

**IP Plant Enlarged At Weed**

Office headquarters space for International Paper Company's Northern California lumber and plywood operations in Weed has been enlarged with the recent completion of a modern new six-room addition.

The smart new all-wood structure houses Weed Branch forester, the logging superintendent, a teletype unit, and will provide a large drawing and mapping room for the company's engineers and foresters, a conference room, and a coffee area. Rich natural wood paneling of knotty Ponderosa pine, Western red cedar, birch, knotty Idaho white pine, and Douglas fir highlight the office's striking interior.

The approximately 2,300-square-foot office addition also features acoustical - tiled ceilings, fluorescent lighting, asphalt tile floors, and the latest in fire protection sprinkler systems. The building contractor was Earl Cummins of Yreka.



**DRAWING AND MAPPING** room is one of several new International Paper offices at Weed. Resident Forester Leonard Hines checks woods map in the spacious new quarters for the company's engineers and foresters at Weed Branch.

**James Named Office Manager**

Clyde James, longtime resident of Klamath County, has been named office manager at Fossil, Ore., of the Agriculture Stabilization and Conservation Administration. He left Klamath Falls Dec. 1 after being trained here for the position.

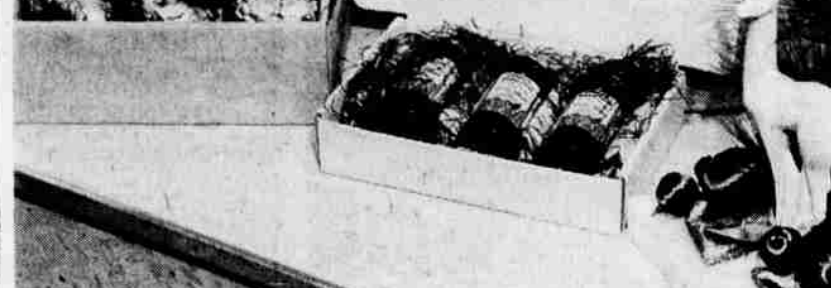
James managed the Farm Labor Employment office in Klamath Falls during World War II, later lived in Taos, N.M., where he and his wife, Louella, owned and operated a woman's specialty and art shop.

They have two daughters and a son, Clyde Jr., who will attend OTI for the remainder of the term.

**JETS GULP FUEL**

NEW YORK (UPI) — A Boeing 707 jet airliner consumes more fuel in the 145 minute flight from Miami to New York than the average motorist does in seven years of driving, according to Northeast Airlines.

The 707s swallow up around 8,000 gallons of aviation fuel on the run while a motorist, averaging 15 miles to a gallon, can drive 75,000 miles on that amount.



**A SPECIAL CHRISTMAS** gift idea is being packaged at Suburban Flower Shop, 3614 South Sixth Street, that stresses the products of the area. The package on the left features Klamath Gem potatoes, distinctively wrapped, plus a jar of wild plum jelly, and the gift package at right features three jars of Oregon Mountain Wild Plum jelly.

**SHOP at the VILLAGE COURT**

**"ROGERS" and "WHITMAN" CANDIES**  
Buy Now While Selection is Complete!

**ATTENTION EMPLOYERS**  
**10% DISCOUNT**  
On Quantity Purchases of \$20.00 or More!

**FREE GIFT WRAPPING**  
**FREE DELIVERY**  
**FREE Parking at Uptown Mobil Service**  
11th & Klamath

**WYLER**  
Incaflex  
**AUTOMATIC CALENDAR WATCH**

All eyes are right on your wrist when you wear Wyler. Made rugged for outdoor sports, handsome for dress-up occasions. Changes date automatically. Famous engineering features that make Wyler the quality leader: waterproof, no break mounting, exclusive Incaflex balance wheel, self-wind model. \$79.50

**SAWYER'S**  
35mm  
**Slide Projectors**

- Automatic Easy Edit
- Slide Tray Filing
- Reverse or Forward
- Remote Operation
- 300 Watts
- Fast 13.5 Projection Lens
- Light Weight, Compact, Versatile

**\$54.50 to \$119.50**

**BEACHS JEWELERS** 834 Main

**LEO'S Camera Shop** 836 Main

**Cassidy's DRUGS** 840 Main