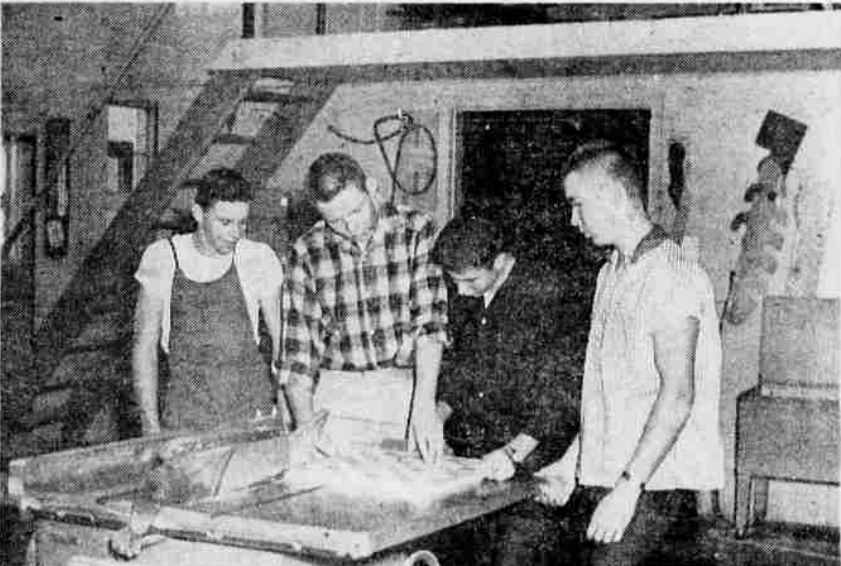


ARCHITECTURAL DRAWING is one in the series of mechanical drawing courses offered at KUHS that deal with the drafting technique used in small house design. Here the students design the dwelling and make all the necessary drawings. The models shown are built outside of school time for extra credit. Approximately 200 students are enrolled in the eight mechanical drawing classes. Shown here, left to right, are Ross Griggs, Bill Schultheisz, John King (barely visible), John Eras, instructor Frances Scapple, Larry Cheyne and Don Patterson (barely visible).



MEMBERS of an Industrial Arts Woodworking class at KUHS study a project in advanced woodworking. Students learn the care and use of hand tools and power equipment while developing projects in many phases of carpentry and furniture construction. Valuable skills are learned here for use in industry or home hobbies later. Left to right are John English, Hugh Barnwell, Kelly Allison and Richard Ford.

'Dropouts' Are Major Problem In High School

Only slightly more than half of all fifth grade pupils finish high school; less than two-thirds of those in the ninth grade remain through grade 12.

Persons lacking a high school diploma are the first to feel the results of the diminishing demand for unskilled labor, and are at greatest disadvantage in periods of high unemployment.

Juvenile delinquency is 10 times more frequent among dropouts than among high school graduates.

Portrait of a dropout: he is 16 years old; often he has been marking time, waiting to reach the age when he may legally quit school. He is most likely to quit between the 10th and 11th grades. It is especially likely that he will not return after a summer vacation.

Statistically, the broken home is an element frequently met in the background of school dropouts. Boys and girls who lack strong family life and ties are often those who are most eager to get away and become independent.

Perhaps the most crucial influence exerted by the home, regarding dropping out of school, is attitude. The feeling of parents toward school, especially those of the mother, play an important role in shaping the attitudes of the child. If, throughout his early years, he can see that his parents value the opportunity to acquire an education, even

though they themselves may not have had much formal schooling, and if he knows that they place a high value on his performance at school, he usually can be expected to take a positive attitude toward the school.

POET'S CORNER

KLAMATH

DEEP in Klamath Oregon lies this land of wind and sun; Summers brushed with breezes from the high Cascades,

Cool and sweet with subtle charm

Which will haunt insistently 'Til we seek a better clime, 'Til we return!

Autumns like an Indian legend, Saving back from Summers' store, the rarest days

To be savored at our leisure— But we haste to gather treasure, For we know it soon must pass!

Winter comes with storm and fury,

And with swift finality, Just as though to put an end To all our thoughts of gentleness.

Then, as a father, when his wrath is spent, Magnanimously beams upon his quaking brood,

Sir Winter smiles through rift-ing clouds In sun upon the snow!

But long he rules 'Til we are weary of his mal- caprice,

And eagerly and vainly grasp Upon each sign of his relenting. We hear of Spring in Sunny

Call! We'll not stay here another year!

Then . . . Summer comes!

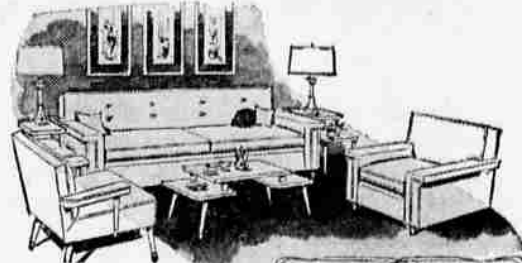
LAND of contrasts . . . brutal, winsome—

This enigma that we call the KLAMATH BASIN!

This—our HOME!
Eleanor Harvey
2118 Home, Klamath Falls

FINE FURNITURE...

Whether you're building a new home, or remodeling your present one, you need new furniture to add the final touch of true pride of ownership!



Choose from the largest selection of furniture and floor coverings in Southern Oregon and Northern California . . . whatever your choice, we have it, and our prices will fit any budget. We have been serving the Klamath Basin for over 40 years with complete satisfaction.



THE EASIEST CREDIT TERMS IN TOWN—ASK US!

LUCAS FURNITURE

195 E. Main

Ph. TU 4-3134

Teacher Talk . . .

Aptitude Test: an examination designed to appraise a person's ability or potential ability to perform tasks for which he has had little or no preparation and experience. Often such tests are given to help a student choose the career or vocation for which he is best fitted. An aptitude test differs from an achievement test, which attempts to evaluate a stu-

dent's level of success at tasks for which he has had previous training (such as his ability to read, express himself in writing, spell, handle arithmetic, and so on).

Herald & News November 13 Page 7

All Work Guaranteed To Satisfy!

BROWN'S
Plumbing & Heating
2244 S. 6th TU 2-6156

CARPETING HOST-CLEANED

Do it yourself . . .
OR we do it for you

RENT the HOST Electric Brush

When cleaned by you . . . your carpeting should be HOST-CLEANED. Safe: won't burn; dustless. Removes dirt instead of shampooing it in. No shrinkage; raises nap; loves texture. Before entertaining . . .

Ph. 4-5111 or 2-2531 for Complete Information

CASCADE

and Men's Hand
LAUNDRY & CLEANERS
Opp. P.O. 11th & Klamath

• CABINETS •

Factory Made . . . Factory Finished
CHOICE OF NINE WOOD FINISHES

See Our Display at 1960 So. Sixth

(Klamath Valley Lumber Bldg.)

Complete Kitchen Service • Evenings By Appointment

Klamath Kitchens 1960 So. 6th St.
Phone TU 2-4778

Let us build your dream home in

MOYINA HEIGHTS

- ★ Local Sub-Contractors
- ★ Trade-Ins Considered
- ★ Local Financing
- ★ Local Material Dealers
- ★ Guaranteed Construction
- ★ Extra Large Lots

(Govt. approved plans for Fall-Out Shelters available)
★ No large discount rate and loan fee . . .
Full Value for your money

FOR A CUSTOM BUILT HOME WITH THE MOST BEAUTIFUL VIEW IN THE KLAMATH BASIN . . . CALL:

GEORGE CRAIN TU 2-3248