

Split Excels In Luxurious Outdoor Living

By DAVID L. BOWEN

If you love to take a breath of fresh air, this house will guarantee you the opportunity.

Counting the long combined living-dining room as one, it has a total of six rooms. And it has just as many terraces or balconied porches—not counting service and front entrance areas.

This abundance of outdoor riches gives B-38 in the House of the Week series a luxury and elegance seldom found in a modest split with 1,238 square feet of enclosed area on living and bedroom levels.

Architect Rudolph Matern did not forget the inside. A huge fireplace wall, with built-in planter, dominates the living room and glamorizes the foyer. This room is 27 feet long and high in flexibility: the dining end can be expanded or contracted as the occasion demands.

The front entrance foyer is an efficient traffic hub that creates excellent circulation. From it, you can go directly to the bedroom level, recreation room level, living area or kitchen without crossing any other room. The kitchen, with a front-of-the-house location and adjacent mudroom-laundry, is efficient and convenient to meal-serving areas.

Big closets, the fireplace, and large individual balconies for two of the three bedrooms add distinction. Architect Matern suggests that a movable screen be used to divide the porch serving bedrooms one and three, so that it can be either one or two balconies as desired. The bathroom has two lavatories to allow for greater use—one set in an unusually long counter top.

Over-all dimensions are 64' 4" in width by 25' 10" in depth. There is a one-car garage beneath the bedroom level.

The same masonry wall which sets the regal tone in the living room houses a bedroom fireplace and a barbecue on the terrace. Sliding glass doors on two sides of the living-dining room give access to outdoor living facilities—the terrace and a roomy covered dining porch. The doors to the terrace are 12 feet wide. The side porch includes big storage closets for outdoor gear, handy to the service entry. A lavatory is included in the mudroom-laundry, conveniently serving all areas at this end of the house.

The recreation or hobby room below bedrooms has a big bay window with built-in seat—and sliding glass doors to still another porch sheltered by the balcony above.

A stunning pre-cast concrete



SPLIT-LEVEL BEAUTY: A 27-foot combined living-dining room, extensive provision for outdoor living and efficient room arrangement highlight this three-bedroom split level. Pre-cast concrete grille adds a glamorous note to the exterior appearance.

grille—a work of art in an ordinarily pedestrian material—is set a few feet ahead of the service porch to give the exterior an exotic touch. Vertical lines of the wood siding and horizontal lines of the brick make an interesting design. The low slope of the roof tends to make the home look not only lower, but longer than it actually is.

B-38 STATISTICS

There are six rooms, plus a foyer and a mudroom-laundry, in this side-by-side split. Living room and dining space are combined in one 12 by 27-foot room dominated by a brick fireplace wall.

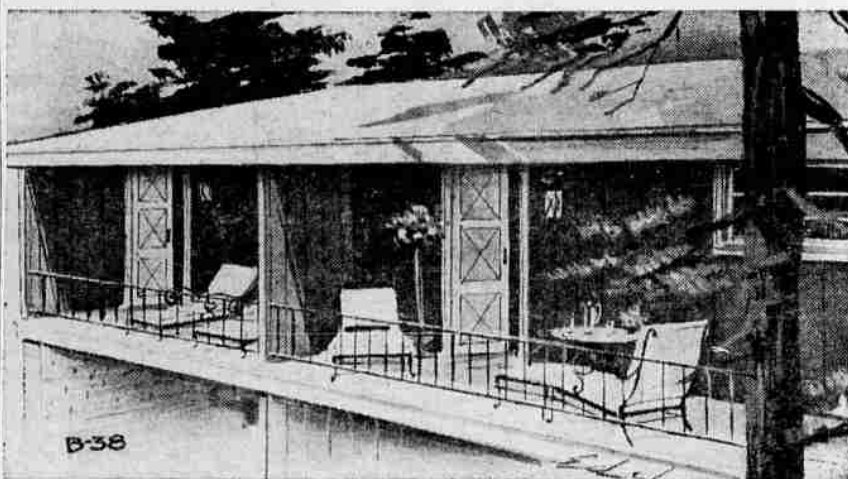
Every room in the house, except the kitchen, has direct access to one or more balconies porches or terraces.

Over - all dimensions are 64' 4" in width by 25' 10" in depth. Habitable area of living and sleeping levels is 1,238 sq. ft.

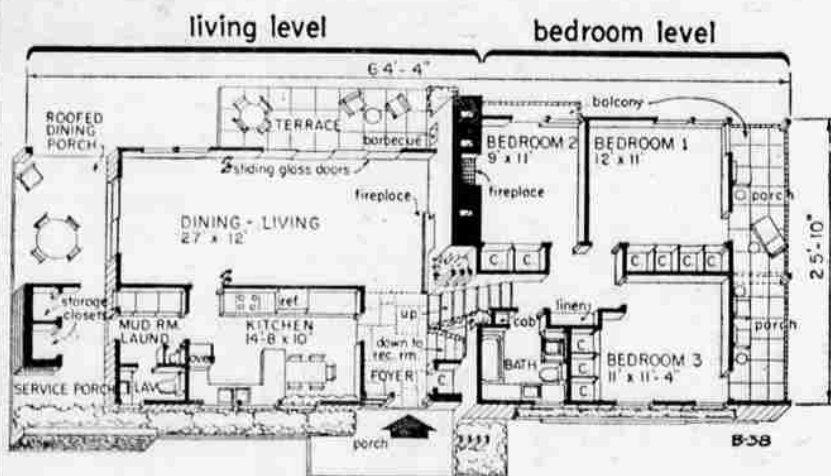
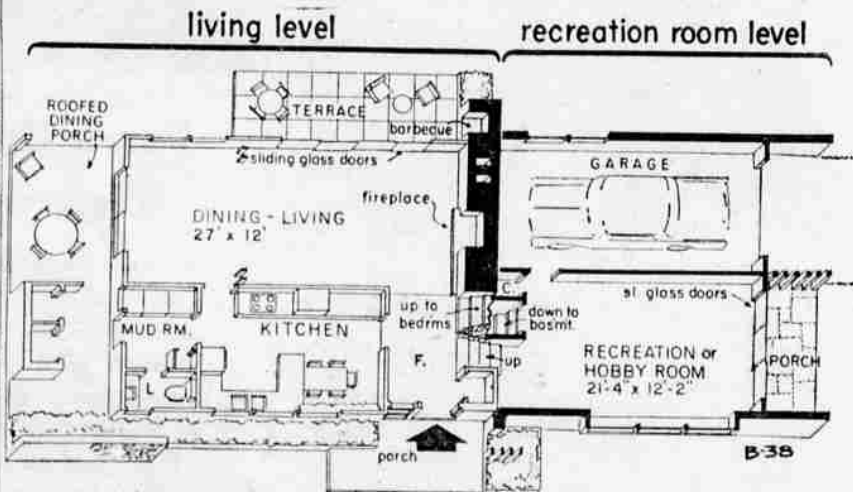
PAYING GUESTS

BARNEGAT, N.J. (UPI)—Sgt. Stanley Zenew, a tollgate policeman on the Garden State Parkway, thought he was being bombed Thursday when a white object was dropped from a U.S. Navy blimp and landed near his booth.

Zenew picked it up, found a quarter inside a knotted handkerchief and a note reading: "The Navy pays its way."



SHAKESPEREAN SETTING: The balcony is available, all B-38 needs is a Juliet. Architect Rudolph Matern opened two bedrooms on this lovely second-level porch.



FLOOR PLANS: Easy, trouble-free traffic circulation characterizes this plan. Big living - dining room at the rear opens to terrace at both side and

Send this coupon for your STUDY PLAN

YOU CAN GET a study plan for The House of The Week by filling in your name and address on the coupon on this page and sending it with 50 cents to this newspaper.

This study plan shows each floor of the house together with each of the four elevations, front, rear and sides of the house. It is scaled at 1/8-inch per foot. It includes a guide on "How to Get Your House Built."

You can take this study plan to your bank or other mortgage lender and to your builder and get rough estimates on the cost of construction in this area as well as an idea of the cost in relation in your budget.

With this information you will know whether you will want to proceed with construction by ordering working blueprints direct from the architect and asking for bids for the work.

STUDY PLAN ORDER COUPON
 Building Editor:
 Enclosed is 50 cents. Please send me a copy of the study plan of **The House of The Week B-38**

(please print)
 Name _____
 Street _____
 City _____ State _____