



THE OWL HOOTS

By A. L. GEISS

If the present plans for moving Oregon Tech to the new campus materialize, there will be a split campus operation for a six-year period. In the 1961-63 biennium, two million dollars will be spent for sewers, roads, heat exchange building and one classroom and one laboratory building. The lawns may be put in in the summer of 1963 and the engineering associates, medical associates, business associates and allied may move to the new campus for the 1963-64 school year. The auto-diesel and metals divisions will remain in their present adequate facilities until the end of the third biennium. Dormitories on this campus will also be used through the period to accumulate more funds for building dorms on the new campus.

During the second biennium the administration and physical education buildings will be built and further roads, walks, and campus site work will be done. The library and shops will be built during the third biennium and the whole school begin operation on the new campus in 1969-69.

The Oregon Tech student body last week wired a basket of flowers and a card to the California Polytechnic College student body in memorial for the football player killed in an airplane crash returning from a football game in Bowling Green. "Our deepest sympathy is with the college at this time in the hour of their loss," the card stated. This act of thoughtfulness and sympathy seems highly proper and especially significant because it was the students' own idea.

We notice that the annual Sadie Hawkins Day dance will be sponsored by the med tech class on Nov. 12. They say "Dogpatch" styles will be in order. Those of us on campus will probably see some Lili Abners and Daisy Maes come Saturday evening.

Six officers of the OTI student body and other campus organizations attended the 18th annual convention of the Oregon Federation of Collegiate Leaders at Linfield College on Friday and Saturday. Topics discussed by the student groups representing 13 colleges in Oregon were public relations, student-faculty relations, the value of student activities, orientation of new students, encouraging student morale and participation, the student role in college development, financial operation of student government, student governmental structure and organization, publications, and the purpose and responsibility of student government. Bill Furrow OTI student body president, led the

HOW CAN WE LEAD IF THEY'RE



NOT PERMITTED TO LEARN

In knowledge there is truth and power. But to have knowledge you must have education. Today, many of our colleges and universities are already crowded. And in just ten years, college applications are expected to double. If America is to continue as the vanguard for freedom, our colleges and universities must continue to grow. You can help. But you must help now! Give generously! Help the college of your choice expand its facilities and pay adequate salaries to its instructors! The leaders of tomorrow must be educated today. Learn more about our current college crisis. Write for your free booklet, "OPEN WIDE THE COLLEGE DOOR," Box 36, Times Square Station, New York 36, N.Y.

Published as a public service in cooperation with The Advertising Council and the Newspaper Advertising Executives Association.



IT COSTS COUNTY TAXPAYERS \$20 every time someone vandalizes one of the new street name signs in the South Suburban Area, according to Jack Kalinoski, county engineer. Here, Kalinoski displays a sign that was torn from its mounting with tremendous force. "This was sheer vandalism, and not just a Halloween prank," Kalinoski said. The new aluminum reflectorized signs have been placed at 200 locations in the suburbs. Signs will soon be installed in the Pelican City and Stewart-Lenox areas.

House Probe Is Expected

WASHINGTON (UPI) — House investigators plan to look into charges that the Civil Aeronautics Board (CAB) was influenced by a \$205,000 loan industrialist Howard Hughes made to Vice President Richard M. Nixon's brother, Donald. Chairman Jack B. Brooks D-Tex., of the House government activities subcommittee said "serious allegations" had come to the panel's attention. He announced plans for the inquiry Thursday.

Brooks said it had been reported that Trans World Airlines, owned by the Hughes Tool Co., was granted favorable CAB decisions following the 1956 loan. He said indications were that the GOP presidential nominee was consulted on every step of the loan.

Subcommittee aide Edward C. Brooks, brother of the chairman, said work already has started on the inquiry. But he said it would be "practically impossible" to get the committee together for a hearing until after the elections next Tuesday. The original report of the loan was made by syndicated columnist Drew Pearson. Pearson

Judge Held On Charges Of Murder

CHATTANOOGA, Tenn. (AP)—Joseph A. Peel Jr., former city judge of West Palm Beach, Fla., was arrested late Thursday night on charges of murder in the 1955 death of a Florida judge and his wife. Circuit Judge C. E. Chillingworth and his wife, Marjorie, vanished from their West Palm Beach home June 15, 1955. Police said circumstances indicated they had been kidnaped and slain. Sheriff James Turner said Peel a neatly dressed man, was taken into custody 40 minutes after he arrived by plane from Charlotte, N.C.

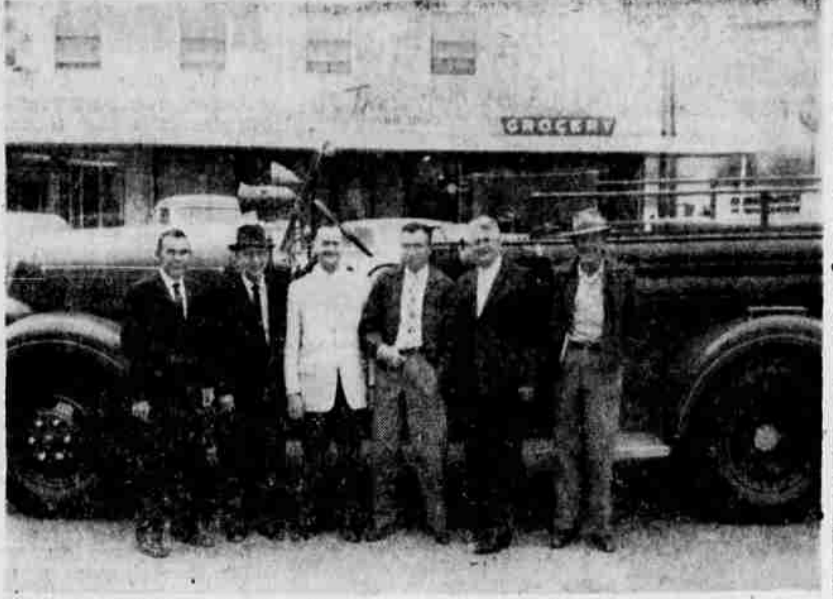
Turner said Peel apparently came here to join James Donald Miles, 31, an Eau Gallie, Fla., builder. Miles and Peel, the sheriff said, are under \$25,000 bond in Florida on charges that they conspired to murder a Florida convict, Floyd A. Holzapfel, 36. Florida authorities said it was Holzapfel who last month blurted out to two undercover agents in Melbourne, Fla., that he and another man were hired to murder Judge Chillingworth.

According to the story, which police said they tape recorded, the men took the 58-year-old judge and his wife four or five miles out to sea, weighted them with chains, and threw them overboard. Holzapfel, who later repudiated the story, allegedly said he was hired by someone who held a grudge against Chillingworth. He is now in jail without bond in West Palm Beach under a charge of murder in the Nov. 5, 1958, slaying of Lew G. Harvey, 21, a Jacksonville area moonshine whiskey runner.

Both Peel and Holzapfel were charged with the Chillingworth murders in sealed warrants at West Palm Beach. The warrants were kept confidential until Peel's arrest. Sheriff Turner said Peel would make no statement except to say that he would waive extradition to Florida.

HAVE TOTS, WILL TRAVEL LONDON (UPI) — The Daily Sketch today quoted actress Janet Leigh as saying she won't make a film anywhere that she can't bring her children along. She says her motto is: "Have tots, will travel."

SPRED SATIN WALL PAINT 20% guarantee in writing **JACK'S COLOR CHIP** S.A.H. Green Stamps Town & Country Shopping Ctr.



TULELAKE'S FIFTH FIRE TRUCK was delivered Wednesday. The fleet serves the Tulelake Multi-County Fire District. Two are stationed in Newell. Through efforts of officials, the \$25,000 truck was obtained for \$700. San Quentin prisoners repaired the truck and Folsom Prison inmates painted it. Pictured are, from left, Tulelake City Councilman Paul Rogers, D. L. Thomas, Mayor Tom Slaughter, Bill Quinn and state Sen. Randolph Collier and Fire Chief Lyle Sherer. — Photo by Marion Barron.

London Missile Consent Denied by US

WASHINGTON (UPI) — American officials said Friday British Prime Minister Harold Macmillan was wrong when he said U.S. Polaris-equipped submarines based in waters of the United Kingdom never would fire missiles anywhere without first consulting London. They said the United States had made no such commitment. A State Department spokesman confirmed that submarines serviced at floating American facilities in the Scottish Clyde Estuary might well discharge their missiles from positions in international waters without letting the British know in advance. He emphasized that no missiles would be fired from British waters but said no consultation commitment could possibly be made regarding possible actions on the high seas.

The spokesman pointed out that the very idea of the Polaris-bearing submarines is to have them available for immediate retaliation against any attack. If they were operating in the Baltic Sea or other international waters it might be necessary to order them to fire without any possibility of first clearing the action with the British. U.S. officials said it was not necessary to make any commitment to the British because the American submarine tender and floating dock to be anchored in British waters do not constitute a base in the same sense as the U.S. Air Force installations in the United Kingdom. It is the practice now to consult the British in advance on all flights from U.S. air bases in the United Kingdom, especially since

ITCHY UNDIES OUSTER LONDON (UPI) — Mrs. Toni Mitz, 40, accused her landlord in court Friday of trying to evict her from her apartment by putting itching powder in her undies while they were being laundered.

NOW OPEN VALLEY MACHINE & WELDING
All Types of Machine Work, Welding and Fabrication.
Eldon Stivers & Wallace Esgate
515 Broad St. Ph. TU 2-3624

Dozer Starts On Wrong Isle

MIAMI, Fla. (AP)—They had a big ceremony a week ago, dedicating a little island as the site of Miami's new port. Thursday, a bulldozer began pushing down trees, clearing the land. Four acres had been worked before someone began making some calculations. "Oops, wrong island," was the comment. Everything should have been on an island 800 feet to the west.

Work Scheduled

SEATTLE (AP)—Bids will be opened Dec. 8 by the Army Engineers for approximately \$100,000 worth of work at the North Bend Air Force station in Oregon. The job calls for construction of a pump-house, pipeline and other equipment for an additional water supply.

Send Klamath County's First Representative To Congress

Elect Ron Phair

Pd. Adv. — Klamath County Democrat and Republican Phair for Congress Comm. Duffy, chairman, 122 5th St.

YOUR VOTE FOR CLARENCE HUMBLE
FOR DISTRICT ATTORNEY
IS A VOTE FOR GOOD COUNTY GOVERNMENT!
● He is EXPERIENCED.
● He is CAPABLE.
● ENDORSED by the Democratic Central Committee.
● ENDORSED by 20 leading Klamath County Attorneys.
CAST YOUR VOTE for CLARENCE HUMBLE
Paid for by Democratic Central Comm., Eldred Hansen, 2530 Reclamation, Chrmn.



"You bet I'm conservative!"
...Elmo Smith
Republican Candidate for United States Senator

1. If "conservative" means I oppose unnecessary big-spending tax measures that would lower a worker's take-home pay, THEN I'M CONSERVATIVE!
2. If "conservative" means I want action to create more and better jobs for Oregon workers, THEN I'M CONSERVATIVE!
3. If "conservative" means I oppose lowering Oregon's superior educational standards to those of sub-standard areas...and at high cost...THEN I'M CONSERVATIVE!
4. If "conservative" means I oppose letting Communist Russia chew up the free world, bite by bite, as my opponent's policy of retreat would, THEN I'M CONSERVATIVE!
5. If "conservative" means I oppose forcing a \$4,000-income working man to pay as much for old-age medical care as a \$20,000-income executive, THEN I'M CONSERVATIVE!
6. If "conservative" means I believe the Federal Government should spend a fair share of the tax money we send to Washington, D. C. to bring a fair share of opportunity to Oregon workers, THEN I'M CONSERVATIVE!

7. If "conservative" means that I believe we should build access highways, and fully develop job-producing natural resources and ports along the Oregon Coast, THEN I'M CONSERVATIVE!
8. If "conservative" means I think the voters of Oregon are entitled to a United States Senator who believes his first responsibility is to the people of his own state who elected him, THEN I'M CONSERVATIVE!

ELMO SMITH is the only candidate for U. S. Senator who has shown a full understanding of National Defense problems, our responsibilities for military stature, the conservation and development of Oregon's vast natural resources.

ELMO SMITH has spelled out in detail his solid program for bringing greater income opportunities to Oregon's industrial and farm workers.

ELMO SMITH has fully demonstrated that he understands the responsibility of a United States Senator to the nation and to the people of Oregon.

ELMO SMITH is the only candidate for U. S. Senator who has fearlessly outlined his specific program on every major state and national issue.

ELMO SMITH IS THE ONLY CANDIDATE WHO HAS SHOWN THE STATURE, THE VIGOR AND THE STRENGTH OREGON NEEDS IN A UNITED STATES SENATOR.

I BELIEVE OREGONIANS WANT A FULL-TIME WORKING SENATOR ON THE JOB FOR THEM. I BELIEVE OREGONIANS WANT TO GET A DOLLAR'S WORTH OF VALUE FOR THEIR TAX DOLLAR. I BELIEVE OREGONIANS WANT MORE JOBS, AND PEACE IN THE WORLD. THAT'S WHY I BELIEVE OREGONIANS WILL SEND ME TO WASHINGTON TO WORK FOR THEM!
Elmo Smith

Elmo Smith for U. S. Senator Committee
1028 S. W. Alder St., Portland, Ore., Ralph Williams and Howard Somers, Co-Chairmen.