



KATHERINE MURPHY, seated at right in the foreground, was four years old on October 20. Helping her celebrate were this group of friends who played games and were served birthday goodies from one to three o'clock at her home, 775 California Avenue. Ernest Breazeale is seated beside the young hostess. From left in the center are Robin Guderian, Susan Murphy, Mi-

chael Breazeale, Georgianna Roescheisen, Keith Goode and Harold Loerky. In back are Christopher Wadley and Moira Wadley. Katherine is the daughter of Mr. and Mrs. Timothy P. Murphy and the granddaughter of Mr. and Mrs. Dennis Murphy, this city, and Mr. and Mrs. C. S. Davis of Tulelake. — Photo by Guderian

SOCIETY

By HELEN BECHEN

The Great Expose

What with short hair and low-ered necklines being worn this fall and winter the uncluttered look is in and throats are being unveiled. "So tie you to the cream jars and makeup pots for your share of beautifying treatment," reminds an authority on beauty problems, "before the great expose." Here are several ways they suggest to accent the positive, eliminate the negative.

Crepes throat! A thorough stimulating treatment with throat cream will off-set this sluggish, neglected area and help keep it firm and elastic through healthful circulation. That extra "plus" found in throat cream is for lubrication, as well. At least 15 minutes each day, before makeup, gives your neck a beauty lift. After thoroughly cleansing it with cleanser from collarbone to chin-line, remove the excess with freshener before applying cream in long sweeping upward strokes. Wait a minute 'til you feel the cream's tingling action go to work. This is the sign that the cream is bringing a beneficial flow of blood to the surface of the skin and thereby helping to flush the underlying skin of impurities that mar its clarity. After a few of these treatments, you'll see a marked improvement not only in the skin's color but in a return of youthful firmness, as well.

Exercise: Anytime during the day, try these simple chin and neck firming calisthenics: 1. Firmly jut the chin out as you circle the head looking over the left shoulder, then up to the ceiling, and on over to the right shoulder. Repeat. 2. Hold a pencil between your lips with the point straight ahead. S-i-r-e-e-h the neck to its full length and tilt the chin upward as you write the alphabet from a-to-z. 3. Force shoulders downward by trying to touch elbows to hips. This automatically lowers shoulders and gives an illusion of a longer neck. Models practice this when having their pictures taken to give themselves a graceful, elegant look. 4. To improve chinline make a fist and cup the other hand over it. Now place under chin. As fists push chin upward, the chin pushes downward in resistance.

Makeup — Foundation will stay on you and off the neckline of your dress if applied properly. (It's only when too much foundation is applied or when it's not thoroughly blended in that it rubs off.) Start with the advantage of a water-proof oil based foundation. Blend it carefully down under the neckline of your dress so that it becomes a part of your skin's own natural coloring and texture. Now puff on a light dusting of powder to give a smooth, velvety finish and voila! . . . the great expose is on.

Holiday Decor Program Theme

MERRILL — Mrs. Earl McFall of Tulelake will be guest of honor at the Merrill Library Club's meeting Thursday, November 3,

from 10 a.m. to 4 p.m. in the recreation hall. She will demonstrate and help make Christmas decorations from pinecones and nuts.

The public is invited. Those interested in making their decorations at this time are asked to bring styrofoam, spray paint, pine cones, nuts, florist wire and decorations from pinecones and nuts.

YOU SHOULD PAY MORE TAXES...?

Your Present Representative Said You Should!

- ★ He Voted For House Bill 670 which would
- ★ Increase Your Taxes! We Now Have
- ★ Huge Tax Surplus



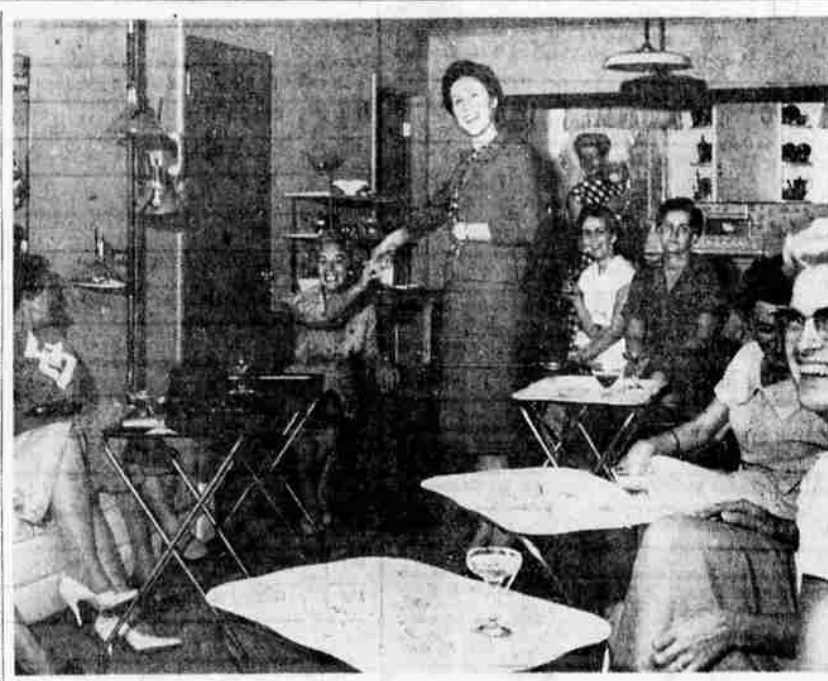
George Flitcraft Will Oppose Unnecessary Taxation
ELECT
George Flitcraft
 YOUR STATE REPRESENTATIVE
 Paid Pol. Adv. Committee for Flitcraft, R. A. Kent, Chrmn., 1934 Painter

BPW Initiation

ALTURAS—Seven new members were initiated into the Alturas Business and Professional Women's Club on October 24. The impressive ceremony was conducted by Mrs. Hallie Tierney. Twenty four members and two guests attended the potluck dinner at the home of Mrs. Clara Eddie preceding the initiation ceremony.

Three Feted On Birthdays

A three-way birthday party held recently at the home of Mrs. W. P. Myers, Lakeshore Drive, brought a group of friends together for an evening of cards and refreshments. Honored were Mrs. Theresa Myers, San Francisco, a niece; Mrs. Hazel Behrendt and Jack McNeis, both of Lakeshore Drive. Mrs. Myers is spending some time here with her aunt.



A TRAVEL ENSEMBLE is modeled by Mrs. Bill Nealon for a group of friends who presented it to her before her recent departure for Hawaii. Pre-luncheon toasts are offered the traveler at a luncheon given by Mrs. Sam Tallero. Mrs. Nealon, winner of the Freeway Day Promotion and Dunsmuir's Ambassador to Hawaii, took her girlhood friend, Mrs. Bill Mei, on the ten-day vacation. Party guests were Mrs. Jess Hamilton, Mrs. Charles Carlquist, Mrs. Bob Avery, Mrs. H. P. Isensee, Mrs. F. A. Wheeler, Mrs. Sam Mazzei, Mrs. John George and Mrs. Francis LeMere Jr. — Photo by Peggy Walsh

SALE
FRUIT TREES
1/3 OFF
 Hardy, Acclimated Stock
Lakeshore Gardens Nursery
 893 Lakeshore Drive
 Ph. TU 4-6955

SANDWICH SPREAD
 Here's a ham sandwich that's different. To prepare a tasty spread mix one cup ground cooked ham, 1/2 cup grated raw carrots, 1/2 cup salad dressing, 1 1/2 teaspoons prepared horseradish, 1/4 teaspoon salt and 1/4 teaspoon pepper. Keep it cold in the refrigerator for a quick snack.

Studio Of Beauty
 is pleased to Announce
Mr. Lantz
 Hair Stylist,
 Formerly of Kansas City,
 Has Joined Our Staff
 Let Mr. Lantz Design a Hair Style for You
STUDIO OF BEAUTY
 Medical Dental Bldg. Ph. TU 4-7151

The Mannequin Look Is Fall Beauty News
 This is the year for fashions bigger than life. Jewelry larger than believable, hats taller, and necklines lower. It will be like looking at a woman through a magnifying glass. And because of this, beauty, too, becomes an artful exaggeration according to a leading cosmetic firm, who coordinated the new stylized mannequin look as an advanced pre-

OFFICE MACHINE REPAIRS
 Typewriters, Adding Machines cleaned, repaired, overhauled.
 Guaranteed Workmanship
JONES' Office Supply
 Phone TU 2-4108
 We call for & deliver

THE TOWN SHOP CLEARANCE Sale

THURS - FRI - SAT ONLY

Wool Suits
 All taken from regular stock. Sizes 8 to 20.
1/3 off
 Reg. 19.95 suits now 13.00
 Reg. 35.95 suits now 19.00
 Reg. 37.95 suits now 25.95
 Plus many other price ranges!

DRESSES
 A special group. Regular 9.95 to 12.95
3.99

Nylon Hose
 Our own famous brand! Discontinued shades. Stock up now!
 Reg. to 1.65
88c

Nylon Slips
 Regular 5.98. Broken sizes. Colors or white. Wonderful Christmas gifts.
2.99

Leather Purses
 Natural leather top-grain cowhide. Regular 2.98
1.99

SCRAMBLE TABLES
 Shirts, T-shirts, blouses, cotton skirts, bras, Bermuda Socks. Values to 5.95
1.00
 Blouses, T-tops, weskets and others. Values to 9.98
2.99

Don't miss it!

1961 WALLPAPER PREVIEW

Our '61 styles are here! Saucy new prints... glorious new murals... hardwood and marble tones. Even "Walt Disney" specials for the children's room. These are the pick of the "big three" studios. Most are pre-trimmed, and plastic coated... many pre-pasted. Priced from 90c to \$9.00. Don't miss out—come in tomorrow!

Send Klamath County's First Representative To Congress
Elect Ron Phair

W. P. Fuller & Co.
 2899 South 6th
 Phone TU 4-6377
 PAINT & WALLPAPER

FULLER

Ph. Adv. — Klamath County Democrat and Republican Phair for Congress Com. Steve Owen and Norma Duffy, chairman, 122 N. 9th St.

All - Wool SKIRTS 1/3 off
 From our regular stock. Sizes 10 - 20.
 Reg. 10.95 . . . now 7.30
 Reg. 12.95 . . . now 8.63
 Reg. 14.95 . . . now 9.97

The Town Shop
 500 Main