

Oregon Fishermen Await Season Opening Day

Sportsmen Watching Calendar

Editor's Note — The following rules, regulations, etc. are excerpts from the "Synopsis of Oregon Angling Regulations, 1960." Copies of the synopsis, in booklet form, may be procured from nearly all sporting goods dealers. References to page numbers contained in the following indicate synopsis page numbers.

ZONE 6 SPECIAL REGULATIONS AND CLOSURES

Blue Lake is closed to angling from any gas-propelled craft.

Campbell Lake is closed to angling from any gas-propelled craft.

Crump Lake is open to trout angling entire year. (Summer bag limit prevails.)

Deathhorse Lake is closed to angling from any gas-propelled craft.

Devils Lake closed to angling from any motor-propelled craft.

Dog Lake is open to trout angling entire year. (Summer bag limit prevails.)

Drews Creek and Tributaries above Drews reservoir are closed to all angling.

Drews Reservoir is open to trout angling entire year. (Summer bag limit prevails.)

Ewauna Lake (Klamath County) is open to trout angling entire year. (Summer bag limit prevails.)

Hart Lake is open to trout angling entire year. (Summer bag limit prevails.)

Klamath River is open to trout angling except from June 13 to September 30.

Klamath River closed to angling from Copco Big Bend dam to downstream side of bridge at flume crossing.

Lake of the Woods open April 23 to October 9.

Link River is open to trout angling entire year. (Summer bag limit prevails.)

Linton Reservoir is closed to angling from any motor-propelled craft. (Summer bag limit prevails.)

Last River is open to trout angling entire year. (Summer bag limit prevails.)

Spencer Creek and tributaries open to angling July 1 to October 31.

Spring Creek from its mouth to a point 100 yards upstream is open to trout angling from May 21 to October 31.

Upper Klamath Lake south of a line from Modoc Point to the northernmost point of Eagle Ridge, exclusive of Shoalwater Bay, open to trout angling entire year. (Summer bag limit prevails.)

Williamson River, exclusive of tributaries except as provided above, is open to trout angling from May 21 to October 31.

Williamson River is closed to angling from or on any boat or floating device above Hixy, 97 bridge.

Wood River is open from May 21 to October 31.

ZONE 3 SPECIAL REGULATIONS AND CLOSURES

Fish Lake open May 21 to October 9 except that portion extending east of a line beginning at a point 400 feet north of and extending to a point 400 feet west of the mouth of High Rock Creek is open July 1 to October 9.

Fish Lake Tributaries are closed to all angling.

Smith River is closed to angling from any boat or floating device above a point 200 feet below Smith River Falls.

Steamboat Creek and tributaries are closed to all angling.

N. Umpqua River Reservoirs. All Copco impoundments above Soda Springs Dam open April 23 to October 31.

Umpqua River (North Fork) is closed to all angling from Winchester Dam down to old Highway 99 bridge.

Umpqua River (North Fork) closed to all angling from or on any boat or floating device between Winchester Dam and Soda Springs Dam and on Lemolo and Tokete Reservoirs above posted deadlines established by the Game Commission.

Umpqua River (North Fork) closed to angling from the Soda Springs Dam down to a point 50 yards below Soda Springs Power Plant.

Umpqua River (North Fork) and Tributaries (exclusive of lakes) closed to angling in any manner other than with an artificial fly from the presently established deadline near the mouth of Rock Creek upstream to a point 50 yards below Soda Springs Power Plant.

ZONE 4 SPECIAL REGULATIONS AND CLOSURES

Applegate River closed to angling from any boat or other floating device.

Big Butte Creek closed to all angling from a point 100 yards below the lower fish racks to a point 100 yards above the upper racks.

Fish Lake open April 23 to October 9.

Fish Lake closed to angling within a 50 foot radius of the windmill.

Howard Prairie Reservoir open April 23 to October 9. All tributaries within the Talent Project subject to stream regulations in Zone 4.

Illinois River is closed to all angling from Fall Creek to a point 400 feet above Illinois Falls.

Rogue River is closed to all angling in the following portions:

- 100 yards above and below any tagging trap or fish rack.
- From Rainey Falls to a point 400 feet below.
- From Savage Rapids Dam to a point 400 feet below.
- From Gold Ray Dam to a point 950 feet below Copco Gold Ray bridge from January 1 to August 31, and to a point 550 feet below said bridge from September 1 to December 31.
- From a point 300 feet above the upper end of diversion dam of the Ideal Cement Company's power house to a point 500 feet below the lower side of the junction of the tailrace from the powerhouse and main channel of the Rogue River, including the canal.
- From Gold Hill Irrigation District spill-way to a point 700 feet upstream from January 1 to June 30.

Rogue River above Bybee Bridge is closed to angling from any boat or floating device from July 1 to December 31.

The main Rogue River channel, excluding the backwaters of Gold Ray and Savage Rapids Dams, is closed to night angling for warm-water game fish.

Squaw Lakes open April 23 to October 9.

Willow Creek Reservoir open April 23 to October 9.

Closed to use of motor boats for any purpose: Devils, Frog (Wasco County), Horseshoe (Jefferson County), Irish, North Twin (Deschutes County), Olallie, South Twin (Deschutes County), Taylor and Three Creeks lakes.

Closed to operation of motor boats at a speed over 10 miles per hour during those hours and days lawful to fish: Crescent, Dalis, East, Elk, Paulina lakes, and Pelton Reservoir (Lake Simtus) above a point 85 mile upstream from Pelton Dam.

Closed to fishing from motor propelled craft: Badger Lake (Wasco County), Monon Lake (Jefferson County), Rock Creek Reservoir (Wasco County), and alton Lake (Creek County).

SPECIAL REGULATIONS AND CLOSURES AFFECTING DIAMOND LAKE

Diamond Lake is open May 2 to October 9, except those portions within a radius of 450 feet of the mouths of Silent and Shoalwater Creeks and 1,000 feet of outlet open July 15 to October 9.

Diamond Lake is closed to operation of motor boats at a speed in excess of 10 miles per hour during the hours and days lawful to fish.

Diamond Lake Tributaries are closed to all angling.

Lake Creek, outlet to Diamond Lake, closed to all angling from the lake downstream to Forest Service Summer Home Road.

ZONE 5 SPECIAL REGULATIONS AND CLOSURES

Chenoweth Creek (Wasco County) is open to trout angling entire year. (Summer bag limit.)

Crescent Lake open April 23 to October 9.

Big Cultus Lake open April 23 to October 9.

Deschutes River is closed to all angling in the following portions:

1. From Crane Prairie dam down to Sheep bridge forest camp, a distance of about 2 miles.
2. From Wickup dam down to a point 1/4 mile below.
3. From Portland General Electric re-regulating dam downstream to the fish trap, a distance of about 450 feet.

Deschutes River and tributaries from Little Lava Lake down to Cow Camp bridge are open to angling with artificial flies only and are closed to angling from or on any boat or floating device.

Deschutes River and tributaries below Bend are closed to fishing from any boat or floating device.

Fifteenmile Creek (Wasco County) is closed to all angling from a point 200 feet above the fishway at Seufert dam down to its mouth.

Haystack Reservoir open entire year.

Link Creek, tributary to Suttle Lake, is closed to all angling.

Lucky Lake (Deschutes County) is closed to all angling.

Metolius River and its tributaries are closed to all angling from the source to Lake Creek. Does not include Lake Creek.

Metolius River is closed to all angling for a distance of approximately 100 feet above and below Camp Sherman bridge as designated by markers of the Game Commission.

Metolius River and Tributaries, closed to all chinook salmon angling.

Metolius River is closed to angling in any other manner than with an artificial fly from Lake Creek down to bridge 99 on the river loop road.

Mill Creek, tributary to Columbia River, (Wasco County) from the forks down to its mouth is open April 23 to October 9.

Jet fuel must be filtered so thoroughly that no foreign matter larger than five microns in diameter can get into the engine.

Open Waters: All waters listed below. Tributary streams are closed unless listed.

ZONE 6 SPECIAL REGULATIONS AND CLOSURES

Chenoweth Creek (Wasco County) is open to trout angling entire year. (Summer bag limit.)

Mud Lake and Tributaries are closed to all angling.

Ochoco Reservoir is open entire year.

Odell Lake is open April 23 to October 9.

Odell Lake bag limit for trout 20 inches or over in length is 2 fish per day and 4 in possession or in 7 consecutive days and is to be counted with and as part of the general trout bag limit.

Paulina Lake is closed to all angling in that portion from the dam to a line starting from a point 400 yards north of the Paulina Lake Resort boathouse, extending diagonally across the lake to a marker 300 yards north of the boat dock in the forest service campgrounds.

Pelton Reservoir open May 21 to October 31.

Rock Creek Reservoir (Wasco County) is open April 23 to October 9.

South Twin Lake. Chumming permitted.

Sparks Lake closed to angling from any craft while such craft is being propelled by a motor.

Sparks Lake and Tributaries, closed to angling in any other manner than with an artificial fly.

Squaw Creek, tributary of Deschutes River, is closed to all angling from Camp Polk road bridge down to its mouth.

Suttle Lake is open from April 23 to October 9, except that portion within a radius of 100 yards of the mouth of Link Creek is closed to angling from September 15 to October 9.

Todd Lake is closed to the use of motor boats for any purpose, and is closed to angling from or on any boat or floating device.

Wickup Reservoir is open April 23 to October 9.

ZONE 7 SPECIAL REGULATIONS AND CLOSURES

Chumming prohibited.

License and bag limit requirements.

Unlawful for any person to import into Oregon any species of game fish taken from the waters beyond the boundaries of the state, including the Pacific Ocean, unless he has a valid license to angle; and it is further unlawful to import such fish in excess of bag limits fixed by the Game Commission (same as general bag limits for game fish in Zone 1 except for salmon).

The bag limit for salmon imported into the state from waters of the Pacific Ocean beyond the state boundaries is 2 fish 20 inches or over per day and 4 in possession or in 7 consecutive days. Salmon under 20 inches may not be imported into the state. (This bag limit does not apply to salmon caught in other states or by commercial fishing.)

Commission to import any fish into the state, or to transport any fish from one body of water to another, or to release any fish into private or public waters of the state. (Aquaria use excepted.)

To angle in any state fish hatchery ponds.

To angle at any time between 1 hour after sunset and 1 hour before sunrise except for warm-water game fish.

To fish by any means except hook and line.

To use more than 1 line or line and rod, or not to closely attend such line or line and rod.

To use more than 3 hooks on a line except on floating bass plugs.

To sell any fish taken with hook and line.

To fish without a license on person.

To refuse to show license on demand.

To angle within 200 feet of any fishway.

To waste wantonly game fish or allow others to do so.

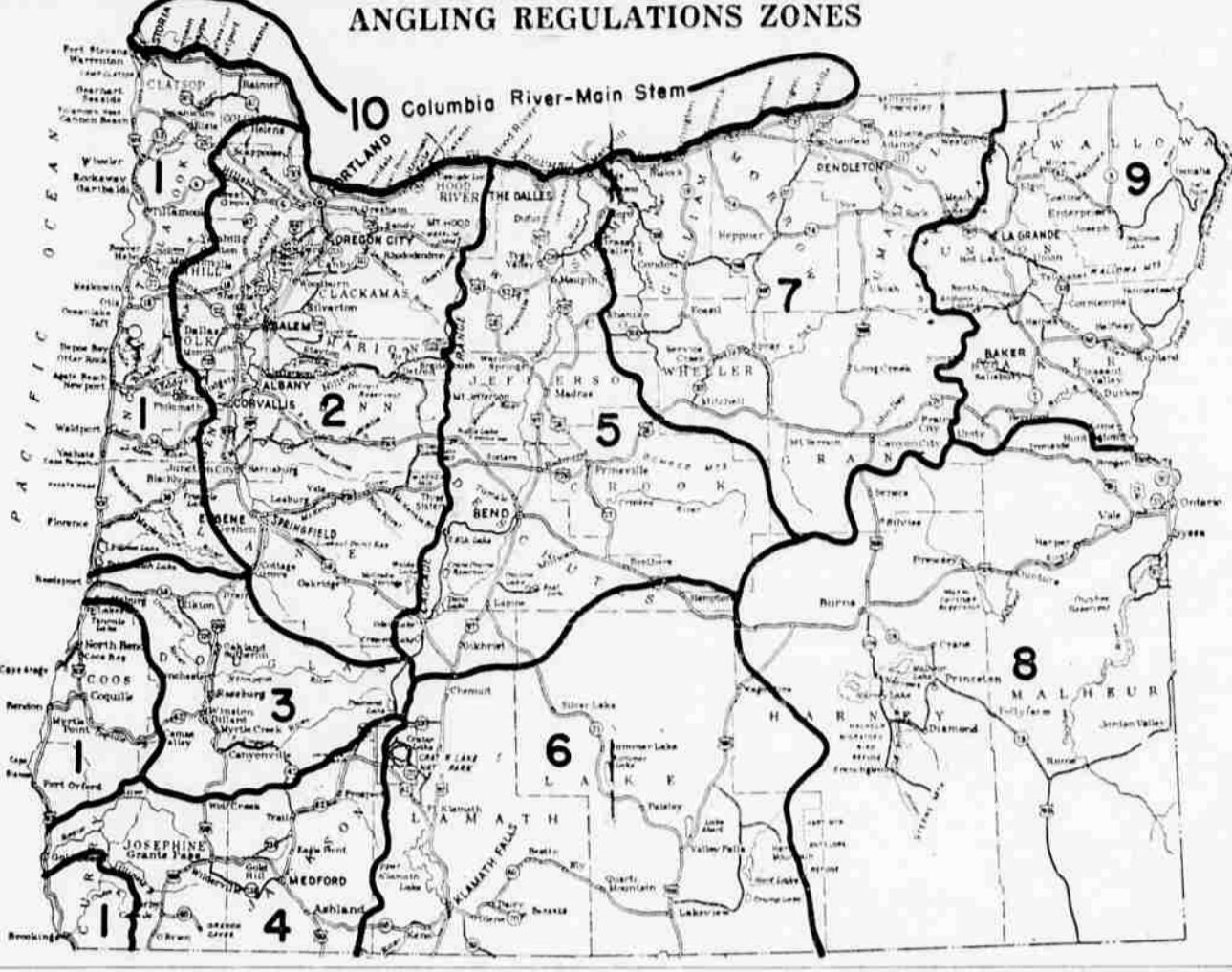
To angle on private land without permission.

To net, trap, spear, gaff, club, snag, or shoot game fish. (Except a net or gaff may be used to land fish caught on hook and line.)

To resist or interfere with the duties of any officer enforcing the game laws.

To cast into or allow to be cast into any body of water, sawdust or other lumber waste, dye, chemical, decaying substance (including molded, decomposed, sour or spoiled salmon eggs) or to use dynamite or other explosives or any poisonous substance in any body of water.

Not to navigate at all times a motor boat in a careful manner and at such rate of speed as not to endanger the property of another or the life or limb of any person.



ZONE 8 SPECIAL REGULATIONS AND CLOSURES

Chumming prohibited.

License and bag limit requirements.

Unlawful for any person to import into Oregon any species of game fish taken from the waters beyond the boundaries of the state, including the Pacific Ocean, unless he has a valid license to angle; and it is further unlawful to import such fish in excess of bag limits fixed by the Game Commission (same as general bag limits for game fish in Zone 1 except for salmon).

The bag limit for salmon imported into the state from waters of the Pacific Ocean beyond the state boundaries is 2 fish 20 inches or over per day and 4 in possession or in 7 consecutive days. Salmon under 20 inches may not be imported into the state. (This bag limit does not apply to salmon caught in other states or by commercial fishing.)

Commission to import any fish into the state, or to transport any fish from one body of water to another, or to release any fish into private or public waters of the state. (Aquaria use excepted.)

To angle in any state fish hatchery ponds.

To angle at any time between 1 hour after sunset and 1 hour before sunrise except for warm-water game fish.

To fish by any means except hook and line.

To use more than 1 line or line and rod, or not to closely attend such line or line and rod.

To use more than 3 hooks on a line except on floating bass plugs.

To sell any fish taken with hook and line.

To fish without a license on person.

To refuse to show license on demand.

To angle within 200 feet of any fishway.

To waste wantonly game fish or allow others to do so.

To angle on private land without permission.

To net, trap, spear, gaff, club, snag, or shoot game fish. (Except a net or gaff may be used to land fish caught on hook and line.)

To resist or interfere with the duties of any officer enforcing the game laws.

To cast into or allow to be cast into any body of water, sawdust or other lumber waste, dye, chemical, decaying substance (including molded, decomposed, sour or spoiled salmon eggs) or to use dynamite or other explosives or any poisonous substance in any body of water.

Not to navigate at all times a motor boat in a careful manner and at such rate of speed as not to endanger the property of another or the life or limb of any person.

MOTORCYCLES Sales & Service

Harley Davidson SUPER 10 XLCH DUO - GLIDE

Topper Motor Scooters

Wide Selection of Used Machines

Ray's Harley Davidson Sales & Service

Highway 97 North, Wacuz Turnoff - Ph. 2-1871

CHUMMING PROHIBITED

Except at South Twin Lake game fish may not be taken caught or angled for by use of salmon eggs, canned corn, liver, crawfish, or any other substance placed or deposited in the waters of a stream or lake with intent to attract or lure or that may attract or lure game fish to the place where same is so placed or deposited; provided, however, said substances may be used as bait when attached to a fish hook on a line held in the hand or on a line connected to a fishing rod or pole held in the hand, or closely attended, except in lakes or streams where the use of bait is prohibited by law.

LICENSE AND BAG LIMIT REQUIREMENTS

Unlawful for any person to import into Oregon any species of game fish taken from the waters beyond the boundaries of the state, including the Pacific Ocean, unless he has a valid license to angle; and it is further unlawful to import such fish in excess of bag limits fixed by the Game Commission (same as general bag limits for game fish in Zone 1 except for salmon).

The bag limit for salmon imported into the state from waters of the Pacific Ocean beyond the state boundaries is 2 fish 20 inches or over per day and 4 in possession or in 7 consecutive days. Salmon under 20 inches may not be imported into the state. (This bag limit does not apply to salmon caught in other states or by commercial fishing.)

Commission to import any fish into the state, or to transport any fish from one body of water to another, or to release any fish into private or public waters of the state. (Aquaria use excepted.)

To angle in any state fish hatchery ponds.

To angle at any time between 1 hour after sunset and 1 hour before sunrise except for warm-water game fish.

To fish by any means except hook and line.

To use more than 1 line or line and rod, or not to closely attend such line or line and rod.

To use more than 3 hooks on a line except on floating bass plugs.

To sell any fish taken with hook and line.

To fish without a license on person.

To refuse to show license on demand.

To angle within 200 feet of any fishway.

To waste wantonly game fish or allow others to do so.

To angle on private land without permission.

To net, trap, spear, gaff, club, snag, or shoot game fish. (Except a net or gaff may be used to land fish caught on hook and line.)

To resist or interfere with the duties of any officer enforcing the game laws.

To cast into or allow to be cast into any body of water, sawdust or other lumber waste, dye, chemical, decaying substance (including molded, decomposed, sour or spoiled salmon eggs) or to use dynamite or other explosives or any poisonous substance in any body of water.

Not to navigate at all times a motor boat in a careful manner and at such rate of speed as not to endanger the property of another or the life or limb of any person.

SPRING Tune-up SPECIAL

6-CYLINDERS - ANY MAKE - ANY MODEL

HERE'S WHAT YOU GET: **SPECIAL!**

- Minor Engine Tune-up
- Complete Chassis Lub.
- Minor Brake Adjust.
- Headlights Adjust.
- Complete Exhaust Inspection.

\$14.95 parts not included. This special saves you 25 to 35 percent.

COME IN TODAY—PROVE TO YOURSELF THAT **Dugan & Mest Trade Best**

410 So. 6th TU 4-3101

BELL'S HARDWARE SEASON OPENING

TACKLE SALE

Spinning Rod 7 1/2 Ft. Hollow Glass True Temper "Lagoon" Reg. 14.95	6	Tackle Box 5 1/2 x 12 x 4 Reg. 1.79 While They Last	99c	CLUSTER EGGS Dry-Pack Your Choice Petes - Mikes Hi-Grade Reg. 50c	9c
Eagle Claw Hooks 6 On A Card All Sizes Reg. 45c	35c	6-lb. Spinning Line 100 Yard Reg. 60c	39c	DRY FLIES Finest Quality American Made Reg. 25c	2/25c
FLY REEL Weber "Futurist" Reg. 2.95	88c	CASTING ROD "Eagle" Solid Fiber Glass Reg. 7.95	389	SPIN LURE ASSORTMENT L. O. Weber Personal Reg. 2.98	169
CLIPPER SPIN REEL Enclosed Type Thumb Brake Reg. 12.95	799	Imitation Mitchell Reel Reg. 12.95	788	SIERRA SPINNING REEL Full Bail Open Face Reg. 4.95	395
GAFF HOOK	77c	COMBINATION CASTING OUTFIT 4 1/2 Ft. Solid Glass Rod All Metal Reel With Level Wind & Drag	349	TACKLE BOX 4 Tray Cantilever	
FREE With Purchase of 2.00 or More Tackle Reg. 1.00 Aluminum Fly Box		STEEL CHEST Water Tite Non Spill Reg. 12.95	995		

Bell's HARDWARE

WARREN J. SCHLUCHTER, General Manager
So. 6th at Washburn Way Ph. TU 4-5107

Regarding Concrete...

Buy With An Eye To Permanence And Durability!

Buy With Confidence...

Call Klamath Ready Mix and see for yourself why the swing is to concrete that lasts and lasts! We use only state approved washed sand and washed rock, plus government tested low alkali cement!

Today's Building Techniques Demand Concrete "Know-How"

Better Construction through the use of Better Concrete!

KLAMATH READY MIX INC.

WARREN J. SCHLUCHTER, General Manager
So. 6th at Washburn Way Ph. TU 4-5107