

Adlai Spurns Ballot Try

NEW YORK (AP) — Adlai E. Stevenson said today "I won't seek the Democratic nomination and I don't expect to be nominated."

Stevenson, who arrived by plane from a nine-week tour of Latin American countries, said his position on the presidential nomination "is no different from that of 1956."

The two-time presidential loser told newsmen that he has "no preference" in the race for his party's presidential nomination. "They are all my friends," he said.

Stevenson, who flew here from San Juan, Puerto Rico, said his visits to 14 Latin American countries were "most useful."

Quake Strikes Seattle Region

SEATTLE (AP) — An earthquake of 2 1/2 minutes duration shook buildings and swayed light fixtures in the Seattle area Sunday night. There were no reports of damage.

Dr. Frank Neumann, University of Washington seismologist, said the tremor occurred at 10:47:40 p.m. and registered a "low 5" on the Mercalli earthquake scale of 12.

Slight damage might occur during an earth tremor which registered about 6, he said.

Dr. Neumann termed it a "highly localized shock" which probably had its center no more than 10 miles from the seismograph on the university campus here.

He said it was the type of earth quake "of which we have about half a dozen every year in the Puget Sound area."

Youth Survives 200-Foot Fall

YAKIMA, Wash. (AP) — Sixteen-year-old Steve Hoyt was recovering in a hospital Monday from injuries received when he fell 200 feet while climbing in the Cascade Mountains Sunday.

Hospital attendants said the youth, son of Mr. and Mrs. Warren Hoyt of Yakima, suffered severe scalp lacerations, but apparently was unharmed otherwise.

Hoyt was one of 17 climbing 2,200-foot Guye Peak. The party was sliding across a snow field, using their ice axes to control speed, when Hoyt's axe failed to hold in the loose snow.

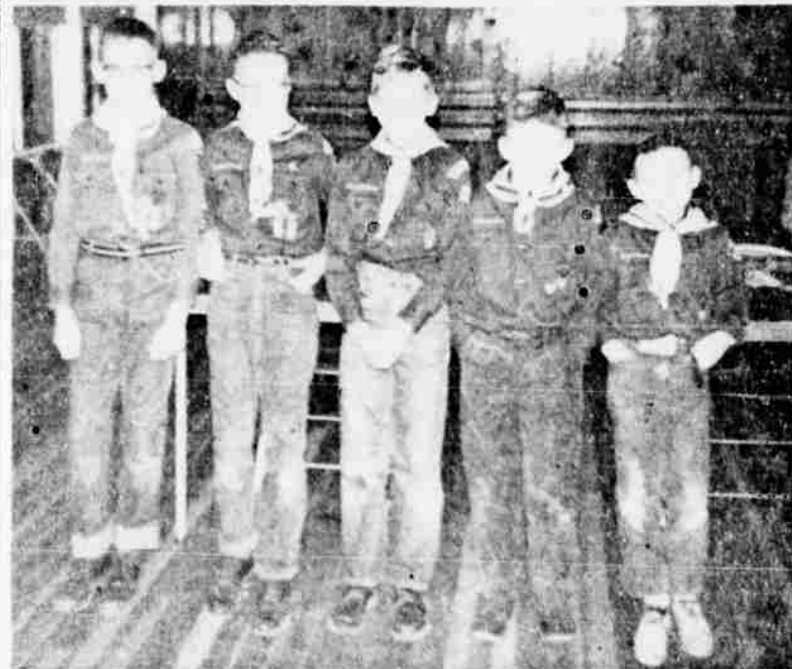
Barry Prallner of Ellensburg, who was nearest Hoyt when he slipped, said the youth went 200 feet down the mountain landing on bare rock.

The climbers fashioned an improvised stretcher from small trees and carried Hoyt a tortuous two miles to the highway where an ambulance was waiting.

Cameras Roll

HOLLYWOOD (AP) — Work resumes today on four of the eight motion pictures interrupted by the Screen Actors Guild strike, which was settled Friday.

Spokesmen at some studios said it may take two weeks to get into full production again.



CUB SCOUTS at Merrill are hard workers. That was made plain at their recent pack meeting when each of these boys received not only one award each, but several. Rewarded cubs, left to right, are Colin Pope, Gary Graves, Dennis Cupernall, Leo McKoen, and Jerry Hammond. Mark Brooks, Mike and Pat Raffill, Craig Fleck and Andy Trujillo were not present for the picture. — Photo by Illys Reeves

CABINETS
African Mahogany,
Birch, Ash, Cherry
McCollum
HOME MART
2030 So. 6th TU 2-5885

Science Shrinks Piles New Way Without Surgery Stops Itch—Relieves Pain

New York, N. Y. (Special) — For the first time science has found a new, lasting substance with the astonishing ability to shrink hemorrhoids, stop itching, and relieve pain—without surgery.

To ease after care, while gently relieving pain, actual reduction (shrinkage) took place.

Most amazing of all—results were so thorough that sufferers made astonishing statements like "Piles have never been a problem."

The secret is a new healing substance (Bio-Dene)—discovery of a world famous research institute. This substance is now available in a proprietary or patented form under the name *Proppanin H* at your drugstore. Money back guarantee.

Reg. U.S. Pat. Off.

Most Of Presidential Candidates Are Men With Considerable Wealth

WASHINGTON (AP) — With a John F. Kennedy (D-Mass.) majority of exceptions, most of 1960 presidential candidates are men of considerable wealth.

It used to be axiomatic in politics that the candidate had to be a poor man. It was regarded as just dandy if he had been born in a log cabin. If he first saw daylight on a farm, that was merely routine.

But the supply of log cabins is running out. And Sen. Robert S. Kerr (D-Okla.), a multimillionaire, found that even his log cabin origin didn't help much in his 1952 bid for the Democratic nomination.

The best estimates of politicians are that at least 25 million dollars will have been spent more or less directly in the presidential campaign by November.

One of the exceptions to the big money group of White House aspirants is Vice President Richard M. Nixon, the probable Republican presidential nominee. Nixon's assets reflect 13 years spent in public life without any outside personal income. He has a \$15,000 equity in a \$75,000 home, a 1955 Oldsmobile, some term insurance and savings accounts, no stocks or bonds.

As vice president, Nixon gets \$30,000 a year salary and a \$10,000 annual expense account. He also has a congressional pension coming to him through his membership in the Senate and House.

In a year when it's politically respectable to be a rich man, Sen. Johnson late his birthplace as near Johnson City, Tex., and this could claim to be farm born.

Sen. Stuart Symington (D-Mo.), who is in there pitching for the Democratic nomination, calls himself "comfortably fixed." He sold out his Emus Electric Company in St. Louis for about a million dollars when he first went into government.

Mrs. Symington is independently wealthy. She and her husband have placed their holdings in trust. Symington's instructions are that the trust must not buy any airplane stock. Otherwise it has a free hand in managing his financial affairs.

Sen. Hubert H. Humphrey (D-Minn.), contesting Kennedy in the primaries, added up his wealth to "about average for a small town druggist." He was a druggist before he got into politics in 1945.

The Minnesota senator called his cash assets "very limited." He said they include about \$6,000 in savings and about \$4,000 in mutual securities. He has a paid-for home in Washington but owes about \$17,000 on a house in Minnesota.

Adlai E. Stevenson, who says he doesn't expect to get a third presidential nomination, is estimated by friends to be worth about half a million dollars.

Blue Angels Aide Killed

COLORADO SPRINGS, Colo. (AP) — A naval pilot and an airman apprentice associated with the famed Blue Angels died Sunday in a jet plane crash.

The Pensacola Naval Air Station in Florida identified the victims as Lt. William P. Sherwood, 27, son of Mr. and Mrs. George W. Sherwood, Wilmington, Del., the pilot, and Airman Apprentice J. Roland McCay, 20, son of J. J. McCay, Amarillo, Tex., a mechanic.

Sherwood was public information officer for the Blue Angels.

The plane, an F9F, suddenly nosed downward, rammied against a power pole and burst into flames. The pilot's body was burned beyond recognition in the cockpit. McCay's body was thrown 200 feet from the plane.

The crash was at Peterson Field seconds after the plane departed following a refueling stop.

The Klamath County School District will receive bids for the sale of one 30-ounce barrel school bus, 1954 model. Bids to be received at the Klamath County School District, Klamath Falls, Oregon, between the hours of 8:00 a.m. and 3:00 p.m. Bids will be opened April 21, 2:00 p.m. at the office of the Klamath County School District, Klamath Falls, Oregon. Bids should be marked "BUS BID" and sent to Klamath County School District, Veterans Memorial Building, Klamath Falls, Oregon. Klamath County School District reserves the right to accept or reject any or all bids.

CLAMATH COUNTY SCHOOL DISTRICT
DARYL GOODR, Clerk
No. 117, April 4, 11, 18, 25, 1960.

NOTICE OF FINAL ACCOUNT
Notice is hereby given that the undersigned, Administratrix of the Estate of WILLIAM HARLAN BOARDER, deceased, has filed her Final Account and the same is on file in the County of Oregon, in the Circuit Court of the State of Oregon, in the County of Klamath, at the hour of 10:00 A.M. of the 11th day of April, 1960. All persons having claims against the Estate are notified to present them with proper vouchers attached, to the undersigned at 328 North First Street, Klamath Falls, Oregon, within 30 (thirty) days from the 4th day of April, 1960.

ROBERT E. SEATON, Administrator.

NOTICE TO CREDITORS
Notice is hereby given that the undersigned has been appointed Administrator of the Estate of LORNA N. JACKSON, Deceased, by the Circuit Court of the State of Oregon for the County of Klamath. All persons having claims against the Estate are notified to present them with proper vouchers attached, to the undersigned at 328 North First Street, Klamath Falls, Oregon, within 30 (thirty) days from the 4th day of April, 1960.

W. R. MAGWELL, Administrator.

NOTICE TO CREDITORS
Notice is hereby given that the undersigned has been appointed Administrator of the Estate of LORNA N. JACKSON, Deceased, by the Circuit Court of the State of Oregon for the County of Klamath. All persons having claims against the Estate are notified to present them with proper vouchers attached, to the undersigned at 328 North First Street, Klamath Falls, Oregon, within 30 (thirty) days from the 4th day of April, 1960.

W. R. MAGWELL, Administrator.

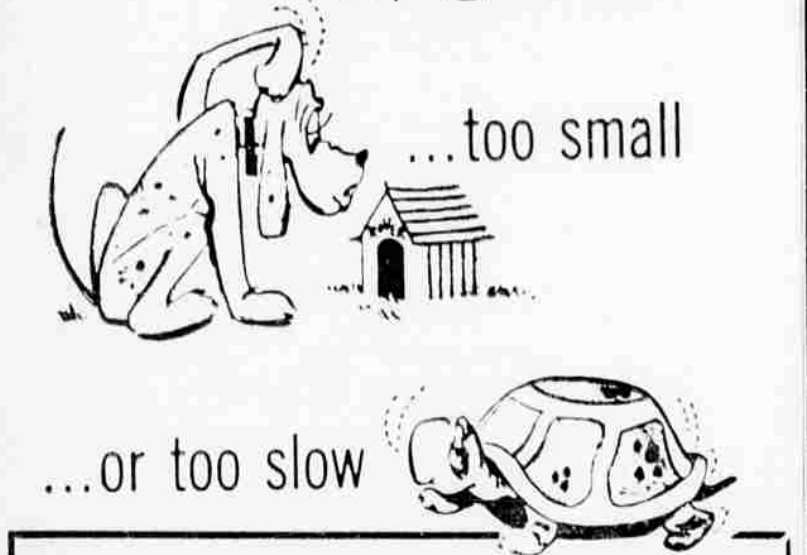
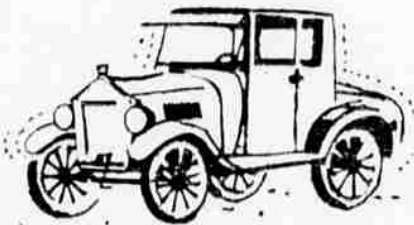
Look to the Future... NATURAL-ly It's GAS!

you need a new GAS WATER HEATER

If your water heater is too old

...too small

...or too slow



Take advantage of this Offer:

\$25. TRADE-IN ALLOWANCE for your old water heater on a NEW Gas "Day & Night" JETGLASS WATER HEATER!

REG. 99.50 Less Your \$74.50 25.00 extra

This Savings is also available thru Your Plumber!

CALIFORNIA-PACIFIC UTILITIES COMPANY
YOUR PARTNER IN WESTERN PROGRESS

CITY GAS Phone TU 4-5175 1011 Main **TANK GAS**

Good Luck!
CLAIRE ELLIS
CCA Director

K-LAD
MUSIC — NEWS — JUST PLAIN FUN

K-LAD Community Club Awards Weekly Newsletter

Here they are... Fourth week winners in CCA.

Sacred Heart Mother's Club	\$30
V. F. W. Auxiliary	\$25
Daughters of Italy	\$20
Klamath Lutheran Ladies Aid	\$15
Rebekah Lodge No. 104	\$10

Runners-Up

Women of St. Paul's	1,000 Bonus Points
Royal Neighbors	1,000 Bonus Points

Western Auto, 11th & Main St., has the answer to the fisherman's dream, a 7 1/2 horsepower outboard motor — a tremendous reduction in size and weight but no sacrifice in quality. Western Auto offers 100 extra CCA credit points to any CCA clubber who brings in a fishing enthusiast for a look at this new Wizard outboard.

Faulgers Leon's has a complete stock of suits, coats and dresses for that teen or sub-teen princess in your family come Easter morning. Faulgers Leon's handle nationally advertised lines-Peggy Page, Little Shepherds, Glen of Michigan and the Lolli bra's, beginner bra's for teens and sub-teens.

LEGAL NOTICE

NOTICE OF BOND SALE
Sealed proposals will be received by the County Clerk of the County of Klamath, Oregon, for the purchase of 122 aggregating thirty-two (32) acres, more or less, situated in the County of Klamath, Oregon, and the same are described as follows: Improvement and sewer utility shared in the City of Klamath Falls, Oregon, as follows:
Sewer Improvement Unit No. 27, covering portions of Block 12, Block 13, Block 14, Block 15, Block 16, Block 17, Block 18, Block 19, Block 20, Block 21, Block 22, Block 23, Block 24, Block 25, Block 26, Block 27, Block 28, Block 29, Block 30, Block 31, Block 32, Block 33, Block 34, Block 35, Block 36, Block 37, Block 38, Block 39, Block 40, Block 41, Block 42, Block 43, Block 44, Block 45, Block 46, Block 47, Block 48, Block 49, Block 50, Block 51, Block 52, Block 53, Block 54, Block 55, Block 56, Block 57, Block 58, Block 59, Block 60, Block 61, Block 62, Block 63, Block 64, Block 65, Block 66, Block 67, Block 68, Block 69, Block 70, Block 71, Block 72, Block 73, Block 74, Block 75, Block 76, Block 77, Block 78, Block 79, Block 80, Block 81, Block 82, Block 83, Block 84, Block 85, Block 86, Block 87, Block 88, Block 89, Block 90, Block 91, Block 92, Block 93, Block 94, Block 95, Block 96, Block 97, Block 98, Block 99, Block 100, Block 101, Block 102, Block 103, Block 104, Block 105, Block 106, Block 107, Block 108, Block 109, Block 110, Block 111, Block 112, Block 113, Block 114, Block 115, Block 116, Block 117, Block 118, Block 119, Block 120, Block 121, Block 122, Block 123, Block 124, Block 125, Block 126, Block 127, Block 128, Block 129, Block 130, Block 131, Block 132, Block 133, Block 134, Block 135, Block 136, Block 137, Block 138, Block 139, Block 140, Block 141, Block 142, Block 143, Block 144, Block 145, Block 146, Block 147, Block 148, Block 149, Block 150, Block 151, Block 152, Block 153, Block 154, Block 155, Block 156, Block 157, Block 158, Block 159, Block 160, Block 161, Block 162, Block 163, Block 164, Block 165, Block 166, Block 167, Block 168, Block 169, Block 170, Block 171, Block 172, Block 173, Block 174, Block 175, Block 176, Block 177, Block 178, Block 179, Block 180, Block 181, Block 182, Block 183, Block 184, Block 185, Block 186, Block 187, Block 188, Block 189, Block 190, Block 191, Block 192, Block 193, Block 194, Block 195, Block 196, Block 197, Block 198, Block 199, Block 200, Block 201, Block 202, Block 203, Block 204, Block 205, Block 206, Block 207, Block 208, Block 209, Block 210, Block 211, Block 212, Block 213, Block 214, Block 215, Block 216, Block 217, Block 218, Block 219, Block 220, Block 221, Block 222, Block 223, Block 224, Block 225, Block 226, Block 227, Block 228, Block 229, Block 230, Block 231, Block 232, Block 233, Block 234, Block 235, Block 236, Block 237, Block 238, Block 239, Block 240, Block 241, Block 242, Block 243, Block 244, Block 245, Block 246, Block 247, Block 248, Block 249, Block 250, Block 251, Block 252, Block 253, Block 254, Block 255, Block 256, Block 257, Block 258, Block 259, Block 260, Block 261, Block 262, Block 263, Block 264, Block 265, Block 266, Block 267, Block 268, Block 269, Block 270, Block 271, Block 272, Block 273, Block 274, Block 275, Block 276, Block 277, Block 278, Block 279, Block 280, Block 281, Block 282, Block 283, Block 284, Block 285, Block 286, Block 287, Block 288, Block 289, Block 290, Block 291, Block 292, Block 293, Block 294, Block 295, Block 296, Block 297, Block 298, Block 299, Block 300, Block 301, Block 302, Block 303, Block 304, Block 305, Block 306, Block 307, Block 308, Block 309, Block 310, Block 311, Block 312, Block 313, Block 314, Block 315, Block 316, Block 317, Block 318, Block 319, Block 320, Block 321, Block 322, Block 323, Block 324, Block 325, Block 326, Block 327, Block 328, Block 329, Block 330, Block 331, Block 332, Block 333, Block 334, Block 335, Block 336, Block 337, Block 338, Block 339, Block 340, Block 341, Block 342, Block 343, Block 344, Block 345, Block 346, Block 347, Block 348, Block 349, Block 350, Block 351, Block 352, Block 353, Block 354, Block 355, Block 356, Block 357, Block 358, Block 359, Block 360, Block 361, Block 362, Block 363, Block 364, Block 365, Block 366, Block 367, Block 368, Block 369, Block 370, Block 371, Block 372, Block 373, Block 374, Block 375, Block 376, Block 377, Block 378, Block 379, Block 380, Block 381, Block 382, Block 383, Block 384, Block 385, Block 386, Block 387, Block 388, Block 389, Block 390, Block 391, Block 392, Block 393, Block 394, Block 395, Block 396, Block 397, Block 398, Block 399, Block 400, Block 401, Block 402, Block 403, Block 404, Block 405, Block 406, Block 407, Block 408, Block 409, Block 410, Block 411, Block 412, Block 413, Block 414, Block 415, Block 416, Block 417, Block 418, Block 419, Block 420, Block 421, Block 422, Block 423, Block 424, Block 425, Block 426, Block 427, Block 428, Block 429, Block 430, Block 431, Block 432, Block 433, Block 434, Block 435, Block 436, Block 437, Block 438, Block 439, Block 440, Block 441, Block 442, Block 443, Block 444, Block 445, Block 446, Block 447, Block 448, Block 449, Block 450, Block 451, Block 452, Block 453, Block 454, Block 455, Block 456, Block 457, Block 458, Block 459, Block 460, Block 461, Block 462, Block 463, Block 464, Block 465, Block 466, Block 467, Block 468, Block 469, Block 470, Block 471, Block 472, Block 473, Block 474, Block 475, Block 476, Block 477, Block 478, Block 479, Block 480, Block 481, Block 482, Block 483, Block 484, Block 485, Block 486, Block 487, Block 488, Block 489, Block 490, Block 491, Block 492, Block 493, Block 494, Block 495, Block 496, Block 497, Block 498, Block 499, Block 500, Block 501, Block 502, Block 503, Block 504, Block 505, Block 506, Block 507, Block 508, Block 509, Block 510, Block 511, Block 512, Block 513, Block 514, Block 515, Block 516, Block 517, Block 518, Block 519, Block 520, Block 521, Block 522, Block 523, Block 524, Block 525, Block 526, Block 527, Block 528, Block 529, Block 530, Block 531, Block 532, Block 533, Block 534, Block 535, Block 536, Block 537, Block 538, Block 539, Block 540, Block 541, Block 542, Block 543, Block 544, Block 545, Block 546, Block 547, Block 548, Block 549, Block 550, Block 551, Block 552, Block 553, Block 554, Block 555, Block 556, Block 557, Block 558, Block 559, Block 560, Block 561, Block 562, Block 563, Block 564, Block 565, Block 566, Block 567, Block 568, Block 569, Block 570, Block 571, Block 572, Block 573, Block 574, Block 575, Block 576, Block 577, Block 578, Block 579, Block 580, Block 581, Block 582, Block 583, Block 584, Block 585, Block 586, Block 587, Block 588, Block 589, Block 590, Block 591, Block 592, Block 593, Block 594, Block 595, Block 596, Block 597, Block 598, Block 599, Block 600, Block 601, Block 602, Block 603, Block 604, Block 605, Block 606, Block 607, Block 608, Block 609, Block 610, Block 611, Block 612, Block 613, Block 614, Block 615, Block 616, Block 617, Block 618, Block 619, Block 620, Block 621, Block 622, Block 623, Block 624, Block 625, Block 626, Block 627, Block 628, Block 629, Block 630, Block 631, Block 632, Block 633, Block 634, Block 635, Block 636, Block 637, Block 638, Block 639, Block 640, Block 641, Block 642, Block 643, Block 644, Block 645, Block 646, Block 647, Block 648, Block 649, Block 650, Block 651, Block 652, Block 653, Block 654, Block 655, Block 656, Block 657, Block 658, Block 659, Block 660, Block 661, Block 662, Block 663, Block 664, Block 665, Block 666, Block 667, Block 668, Block 669, Block 670, Block 671, Block 672, Block 673, Block 674, Block 675, Block 676, Block 677, Block 678, Block 679, Block 680, Block 681, Block 682, Block 683, Block 684, Block 685, Block 686, Block 687, Block 688, Block 689, Block 690, Block 691, Block 692, Block 693, Block 694, Block 695, Block 696, Block 697, Block 698, Block 699, Block 700, Block 701, Block 702, Block 703, Block 704, Block 705, Block 706, Block 707, Block 708, Block 709, Block 710, Block 711, Block 712, Block 713, Block 714, Block 715, Block 716, Block 717, Block 718, Block 719, Block 720, Block 721, Block 722, Block 723, Block 724, Block 725, Block 726, Block 727, Block 728, Block 729, Block 730, Block 731, Block 732, Block 733, Block 734, Block 735, Block 736, Block 737, Block 738, Block 739, Block 740, Block 741, Block 742, Block 743, Block 744, Block 745, Block 746, Block 747, Block 748, Block 749, Block 750, Block 751, Block 752, Block 753, Block 754, Block 755, Block 756, Block 757, Block 758, Block 759, Block 760, Block 761, Block 762, Block 763, Block 764, Block 765, Block 766, Block 767, Block 768, Block 769, Block 770, Block 771, Block 772, Block 773, Block 774, Block 775, Block 776, Block 777, Block 778, Block 779, Block 780, Block 781, Block 782, Block 783, Block 784, Block 785, Block 786, Block 787, Block 788, Block 789, Block 790, Block 791, Block 792, Block 793, Block 794, Block 795, Block 796, Block 797, Block 798, Block 799, Block 800, Block 801, Block 802, Block 803, Block 804, Block 805, Block 806, Block 807, Block 808, Block 809, Block 810, Block 811, Block 812, Block 813, Block 814, Block 815, Block 816, Block 817, Block 818, Block 819, Block 820, Block 821, Block 822, Block 823, Block 824, Block 825, Block 826, Block 827, Block 828, Block 829, Block 830, Block 831, Block 832, Block 833, Block 834, Block 835, Block 836, Block 837, Block 838, Block 839, Block 840, Block 841, Block 842, Block 843, Block 844, Block 845, Block 846, Block 847, Block 848, Block 849, Block 850, Block 851, Block 852, Block 853, Block 854, Block 855, Block 856, Block 857, Block 858, Block 859, Block 860, Block 861, Block 862, Block 863, Block 864, Block 865, Block 866, Block 867, Block 868, Block 869, Block 870, Block 871, Block 872, Block 873, Block 874, Block 875, Block 876, Block 877, Block 878, Block 879, Block 880, Block 881, Block 882, Block 883, Block 884, Block 885, Block 886, Block 887, Block 888, Block 889, Block 890, Block 891, Block 892, Block 893, Block 894, Block 895, Block 896, Block 897, Block 898, Block 899, Block 900, Block 901, Block 902, Block 903, Block 904, Block 905, Block 906, Block 907, Block 908, Block 909, Block 910, Block 911, Block 912, Block 913, Block 914, Block 915, Block 916, Block 917, Block 918, Block 919, Block 920, Block 921, Block 922, Block 923, Block 924, Block 925, Block 926, Block 927, Block 928, Block 929, Block 930, Block 931, Block 932, Block 933, Block 934, Block 935, Block 936, Block 937, Block 938, Block 939, Block 940, Block 941, Block 942, Block 943, Block 944, Block 945, Block 946, Block 947, Block 948, Block 949, Block 950, Block 951, Block 952, Block 953, Block 954, Block 955, Block 956, Block 957, Block 958, Block 959, Block 960, Block 961, Block 962, Block 963, Block 964, Block 965, Block 966, Block 967, Block 968, Block 969, Block 970, Block 971, Block 972, Block 973, Block 974, Block 975, Block 976, Block 977, Block 978, Block 979, Block 980, Block 981, Block 982, Block 983, Block 984, Block 985, Block 986, Block 987, Block 988, Block 989, Block 990, Block 991, Block 992, Block 993, Block 994, Block 995, Block 996, Block 997, Block 998, Block 999, Block 1000.

LEGAL NOTICE

CARD OF THANKS
We wish to express our appreciation for the many acts of kindness of our many friends and neighbors during our recent illness and recovery. Our recovery was made possible by the prayers and love of all who cared for us. Thank you very much.
Charles and Betty Carls

FUNERAL HOMES
O'Hara's Memorial Chapel, 339 Pine, TU 4-3454. Parking lot available.
Ward's Funeral Home, 925 High Street, Phone TU 2-6424.

MEETING NOTICES
ALPHA Chapter No. 61, O.E.S. will hold a stated meeting Tuesday, 8 p.m. Masonic Temple, Phyllis Rutledge, W.M. Wilbur Hornberger, W.P.

LOST & FOUND
LOST two keys and two keys. Return to 424 S. 1st St. or call TU 4-4884.
FOUND watch, small little League Ball, please return to TU 4-3847.

GENERAL NOTICES
KNAEP shoes, call TU 3-3081.

PERSONALS
APPROXIMATELY made of rates, touring and travel. Make 263 50. 5th St. Klamath Falls.
KLAAMATH Beauty College, for appointment call TU 2-1411.
LICENSED home for ages, TU 2-3185.
HAVE a Stanley Home Products party. Mail or phone order, TU 2-5775, 500 W. Main, 1023 So. 4th.
FULLER brush dealer, Roy Sapp, 415 No. 6th TU 4-7554.
SPENCER CORSETTE, Phone TU 4-8257.
STAUFFER Home Reducing plant, authorized counselor, Lillian Belling TU 4-8914.
AVON toilet articles, TU 2-3770.
WATKINS PRODUCTS, TU 4-7831.

PUBLIC CHARITY - SERVICES
YOUNG women of any faith needing confidential advice may contact Sister Francis, Catholic Charities, 278 W. Broadway, Eugene, Oregon, Phone 5-3447.
ALCOHOLICS Anonymous, phone TU 4-3257. Meetings every 2nd and 4th Wed. 7:30. Also friendly help for the families of alcoholics.

SERVICES
REWEAVING, 3511 Bisbee, TU 2-1687.
ROTODILLING lawn and garden, Tractor and power mower, call TU 2-5775, 500 W. Main, 1023 So. 4th.
LAURENCE Redden.
CONCRETE contractor, commercial, residential, sidewalks, curbs, gutters, foundations, retaining walls, TU 4-9884, Frank W. Borge.
FRANK'S fencing, all types, TU 4-8388.
ROTODILLING lawn and garden, TU 2-5775.
MOBILE crane service, TU 4-8026, TU 2-1912.
IT'S time to build! For remodeling, retaining walls, brick work, call TU 2-4316.
FOR restaurant equipment and supplies, call TU 4-8388, 328 W. Main, 1023 So. 4th.
CONCRETE contractor, commercial, residential, sidewalks, curbs, gutters, foundations, retaining walls, TU 4-9884, Frank W. Borge.
FRANK'S fencing, all types, TU 4-8388.
ROTODILLING lawn and garden, TU 2-5775.
MOBILE crane service, TU 4-8026, TU 2-1912.
IT'S time to build! For remodeling, retaining walls, brick work, call TU 2-4316.
FOR restaurant equipment and supplies, call TU 4-8388, 328 W. Main, 1023 So. 4th.
CONCRETE contractor, commercial, residential, sidewalks, curbs, gutters, foundations, retaining walls, TU 4-9884, Frank W. Borge.
FRANK'S fencing, all types, TU 4-8388.
ROTODILLING lawn and garden, TU 2-5775.
MOBILE crane service, TU 4-8026, TU 2-1912.
IT'S time to build! For remodeling, retaining walls, brick work, call TU 2-4316.
FOR restaurant equipment and supplies, call TU 4-8388, 328 W. Main, 1023 So. 4th.
CONCRETE contractor, commercial, residential, sidewalks, curbs, gutters, foundations, retaining walls, TU 4-9884, Frank W. Borge.
FRANK'S fencing, all types, TU 4-8388.
ROTODILLING lawn and garden, TU 2-5775.
MOBILE crane service, TU 4-8026, TU 2-1912.
IT'S time to build! For remodeling, retaining walls, brick work, call TU 2-4316.
FOR restaurant equipment and supplies, call TU 4-8388, 328 W. Main, 1023 So. 4th.
CONCRETE contractor, commercial, residential, sidewalks, curbs, gutters, foundations, retaining walls, TU 4-9884, Frank W. Borge.
FRANK'S fencing, all types, TU 4-8388.
ROTODILLING lawn and garden, TU 2-5775.
MOBILE crane service, TU 4-8026, TU 2-1912.
IT'S time to build! For remodeling, retaining walls, brick work, call TU 2-4316.
FOR restaurant equipment and supplies, call TU 4-8388, 328 W. Main, 1023 So. 4th.
CONCRETE contractor, commercial, residential, sidewalks, curbs, gutters, foundations, retaining walls, TU 4-9884, Frank W. Borge.
FRANK'S fencing, all types, TU 4-8388.
ROTODILLING lawn and garden, TU 2-5775.
MOBILE crane service, TU 4-8026, TU 2-1912.
IT'S time to build! For remodeling, retaining walls, brick work, call TU 2-4316.
FOR restaurant equipment and supplies, call TU 4-8388, 328 W. Main, 1023 So. 4th.
CONCRETE contractor, commercial, residential, sidewalks, curbs, gutters, foundations, retaining walls, TU 4-9884, Frank W. Borge.
FRANK'S fencing, all types, TU 4-8388.
ROTODILLING lawn and garden, TU 2-5775.
MOBILE crane service, TU 4-8026, TU 2-1912.
IT'S time to build! For remodeling, retaining walls, brick work, call TU 2-4316.
FOR restaurant equipment and supplies, call TU 4-8388, 328 W. Main, 1023 So. 4th.
CONCRETE contractor, commercial, residential, sidewalks, curbs, gutters, foundations, retaining walls, TU 4-9884, Frank W. Borge.
FRANK'S fencing, all types, TU 4-8388.
ROTODILLING lawn and garden, TU 2-5775.
MOBILE crane service, TU 4-8026, TU 2-1912.
IT'S time to build! For remodeling, retaining walls, brick work, call TU 2-4316.
FOR restaurant equipment and supplies, call TU 4-8388, 328 W. Main, 1023 So. 4th.
CONCRETE contractor, commercial, residential, sidewalks, curbs, gutters, foundations, retaining walls, TU 4-9884, Frank W. Borge.
FRANK'S fencing, all types, TU 4-8388.
ROTODILLING lawn and garden, TU 2-5775.
MOBILE crane service, TU 4-8026, TU 2-1912.
IT'S time to build! For remodeling, retaining walls, brick work, call TU 2-4316.
FOR restaurant equipment and supplies, call TU 4-8388, 328 W. Main, 1023 So. 4th.
CONCRETE contractor, commercial, residential, sidewalks, curbs, gutters, foundations, retaining walls, TU