

YOU ARE INVITED TO OUR...

Open House

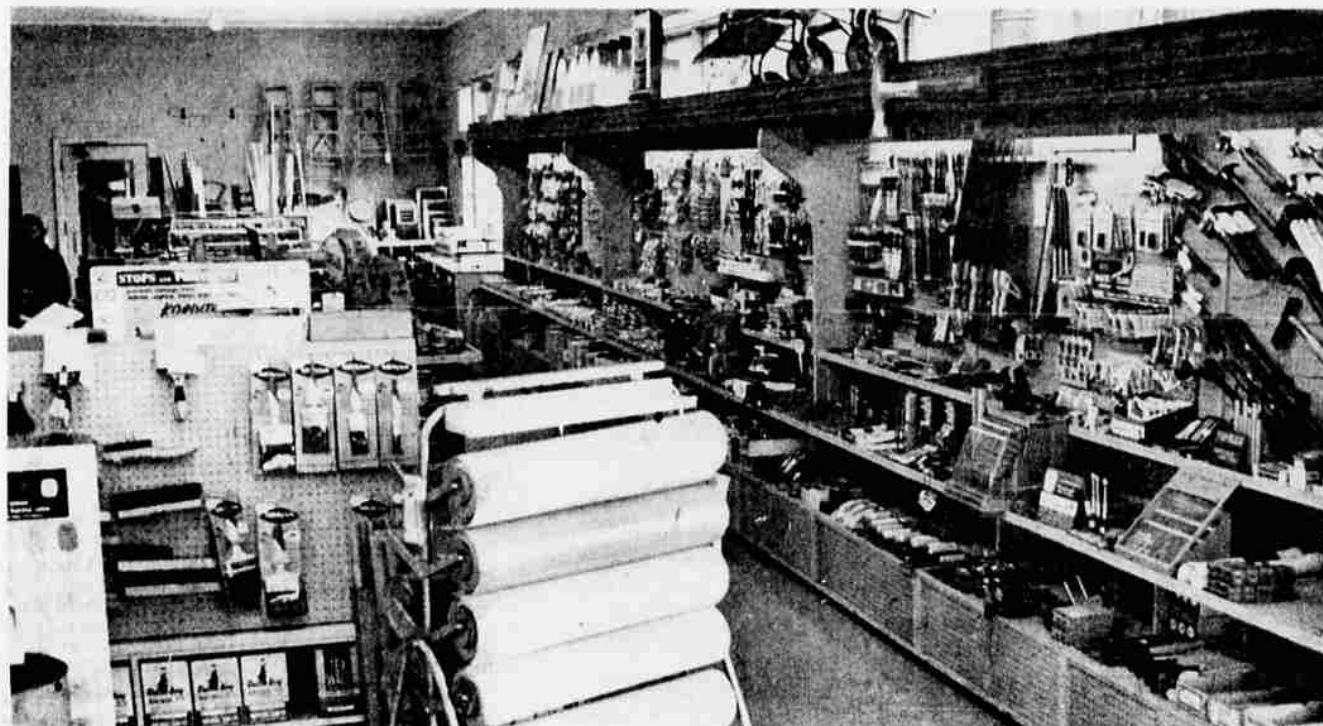
Come In And See Our Newly Remodeled



Long-Bell
Retail Division • International Paper Company

"One Stop"

BUILDING MATERIAL STORE



CORNER OF MAIN & SPRING

All Day Saturday - April 2nd

Be Our Guest For Free Coffee, Donuts and Cold Drinks
Be Sure To REGISTER For These ...
VALUABLE DOOR PRIZES!

No Purchase Necessary

GRAND PRIZE "D & M" 19-Inch — 4-cycle engine
ROTARY POWER MOWER

"Range Mate"
RANGE HOOD
with built in light and fan.
Coppertone finish

One "Rylock" Aluminum
COMBINATION DOOR

8'x12' Wall Prefinished Mahogany
PLYWOOD PANELING

8'x12' Wall Capecod Pine
PLYWOOD PANELING

4 gallons Dutch Boy
ENAMELIZED OUTSIDE HOUSE PAINT

4 foot fibreglass
DOOR AWNING

45 sq. ft. "Brushwood" Vinyl
ASBESTOS FLOOR TILE

120 sq. ft. Armstrong "Classic" Cushiontone
ACOUSTICAL CEILING TILE

2 gallons Texolite
LATEX WALL PAINT
Plus 1 Qt. Matching enamel

Universal "Coffematic" Automatic
COFFEE MAKER

Enough **WALLPAPER** to do one complete room. Pattern of your choice

Drawing for Door Prizes will be held at 5 p.m. Saturday. You need not be present to win. Winners will be notified. Be sure to register before 5 p.m. No purchase necessary.

FACTORY DEMONSTRATIONS

Factory Trained Representatives will be on hand to demonstrate their new products for the home.



Main and Spring

"Before" you buy investigate our **CONVENIENT CREDIT PLANS!**

1. 30-Day Charge Account
2. 90-Day Charge Account
3. Revolving Credit Plan
4. Long-Bell Budget Plan



Come In... LETS GET ACQUAINTED



Cliff Clayton
Manager



Wilbur Muma
Assistant Manager

Manager Cliff Clayton and our entire Long - Bell staff hope to personally welcome you at the Open House of their newly remodeled store. We're proud of these new facilities which were planned to make your shopping more pleasant, more convenient. You will also find us well qualified and more than happy to help you with any building, remodeling or redecorating problem. So won't you come in . . . help us celebrate now . . . and always feel free to make Long-Bell your Home Improvement Headquarters.



Chuck Rackleff
Salesman



Emma Behnke
Bookkeeper



Dick Kruger
Salesman



Bob Walton
Truck Driver



Pete Stride
Yardman



Cleo Ball
Truck Driver



"Dutch" Henschke
Yardman



FREE ROSE BUD.
FOR ALL THE LADIES
Who Attend Our Open House!

Picture this beautiful rose in your favorite bud vase . . . so life-like that only close inspection reveals its plastic perfection. Identical to the new 12-months bouquets now retailing in better stores throughout the country. Has an 18-inch stem and 2-inch bud. Choice of colors, pink, red, or white.