



APHID EGGS laid by the common rose aphid on minute rose bush stems show overwintering forms of insect pests. Dormant sprays applied before leaf and flower buds open control such overwintering pests on fruit trees, shade trees, ornamental shrubs and rose bushes. — Photo by Vertrees, County Extension Agent

Now Is Time To Use Your Dormant Spray On Shrubs

By J. D. VERTREES

Dormant spraying seems to be a mystery to many folks. They know they should be doing something but are not sure of the "what," the "why" and the "how."

Dormant spraying is simply what the name implies, spraying during the dormant season of the trees and shrubs.

This spraying is done when the buds and leaves of the trees and shrubs are dormant. Stronger types of sprays can be used without damaging plant tissue.

The "why" of dormant spraying is illustrated in the above picture. Aphid eggs and mite eggs are laid in the fall as overwintering forms. The eggs are not easily killed by other types of spraying. Aphids, scales, mites, all start with these overwintering forms and build up very rapidly as spring develops. By using the dormant spray at this time, these eggs are killed. The amount of insect damage and disease spread by the insects the coming season is much reduced.

It is true that these insects may migrate in from natural hosts and other areas but the build up and damage in a well sprayed garden or orchard is much less when dormant spraying is done.

Two materials are used commonly in dormant spraying. One is lime-sulfur solution which is a brownish colored liquid. The other material commonly used is dormant oil. These are specially designed spray oils, and are not merely a common oil which you may pick up from automotive or industrial source. Dormant oil is designed to spray on plants at this season of the year.

The most common form of dormant spraying is a combination of dormant oil and lime-sulfur solution in water. Both of these are diluted according to the tables given on the label. Read the labels thoroughly and follow directions closely.

Dormant spraying must be done

soon when the weather is clear with as little wind as possible. Dormant spraying must be done before the leaf buds or flower buds are starting to open. Here in Klamath County we probably have two or three weeks yet to get the job done.

A few don'ts to remember: First, don't use dormant oil or lime-sulfur straight. Dilute with water according to the label recommendation.

Second, don't use lime-sulfur near white painted fences or buildings. The reaction of the sulfur in the solution with the lead in the white paint will cause a black surface which will not wash off. If fruit trees or shrubs are near white painted buildings, or fences, use only the dormant oil.

Don't use lime-sulfur on ever-

green shrubs, such as Colorado Blue Spruce, Mugho Pine or any of the evergreen conifers. Lime-sulfur will remove the "bloom" which is the natural color of the conifer foliage.

Don't spray haphazardly. Thoroughly cover all twigs, stems, branches and trunks of the trees or shrubs. Insect eggs are tucked in the crevices of the bark under

the scales of the buds and in tiny cracks in the surface of the limbs and twigs. Spray thoroughly to the point of runoff.

Fruit trees, roses, and all deciduous shrubs should be sprayed at this time with dormant oil and lime-sulfur to kill both overwintering spores of diseases and the eggs of overwintering insects and mites. Additional information on dor-

mant spraying is available at the county agent's office in the post office building.

• Newspaper SPOT ADS are inexpensive — repeated daily \$1.15

Quiet Man Back On Job As Minister

COLOMBO, Ceylon (AP) — A shy, unassuming man has returned to the job of Ceylon's prime minister, a post he once voluntarily resigned.

Dudley Shelton Senanayake became prime minister Monday after his United National party—UNP—won the largest bloc of seats in the new Parliament. But it had only 50 of the 151 seats and will have to depend on support from other factions to govern.

The UNP is a moderately conservative group drawing its chief support from the business community and small landowners. It is dedicated to free enterprise but espouses some socialistic welfare programs.

"We don't like to be called a conservative party," says the 41-year-old prime minister. "Conservatism is a dirty word in underdeveloped Asia today. We prefer to be considered progressives."

The party generally supports the West in world affairs although

it believes the little island nation of almost 10 million persons should remain neutral in the struggle between the West and the Communist bloc.

The UNP was founded by Senanayake's father, another D. S. Senanayake, who was a leader in the movement for independence from Britain.

Dudley — many Ceylonese politicians are known by their first name — was born June 19, 1911.

Although Buddhist, as are most Ceylonese, he attended a Protestant school in Colombo before going to Cambridge.

Dudley graduated with honors in natural sciences, then was admitted to the bar and returned to Ceylon to practice law. In 1926 he was named to a state council which exercised some powers of self-government.

He was minister of agriculture and lands under his father, who was independent Ceylon's first prime minister from 1948 to his death in 1952.

Dudley was offered the prime minister's job as an honor to his father. He accepted, but his heart never really seemed to be in it.

After public protests at the high price of rice led to violence in August, 1953, Dudley resigned, pleading of stomach trouble. He was treated in England for a chronic amoebic illness. In 1956 he announced his retirement from politics.

SF School Sued For \$30,000

SAN FRANCISCO (AP) — A high school senior expelled for allegedly using abusive and profane language to a teacher is suing the school for \$30,000. He also demands reinstatement.

The action was filed in behalf of Thomas L. Ayatch, 17, who charges he was expelled "for conduct substantially similar to that of the majority of the students at Galileo High School."

WANTED!

10 homes in Klamath County to display new roofing and insulated siding.
PHONE TU 4-8866

4,000 Restaurants Prove it Every Day Boyd's Flavor Stands Up!



Cup...After Cup...After Cup... Boyd's Flavor Stands Up!

More than 4,000 restaurants in the Northwest serve Boyd's Coffee day in and day out—millions of cups every year. Lots of people judge a restaurant by its coffee; it has to be consistently good. Boyd's is—rich and delicious. And restaurants need coffee that stays fresh and good-tasting cup after cup, hour after hour. Boyd's does—its flavor stands up. Enjoy Boyd's at home, too. Your grocer has it for no more than the cost of regular coffee.

Save Boyd's lids—they're worth money to your favorite charity, church or other non-profit organization. Write Boyd's for details. Boyd Coffee Company, Portland 7, Oregon



The Northwest's leading restaurant coffee / Serving fine restaurants all this century

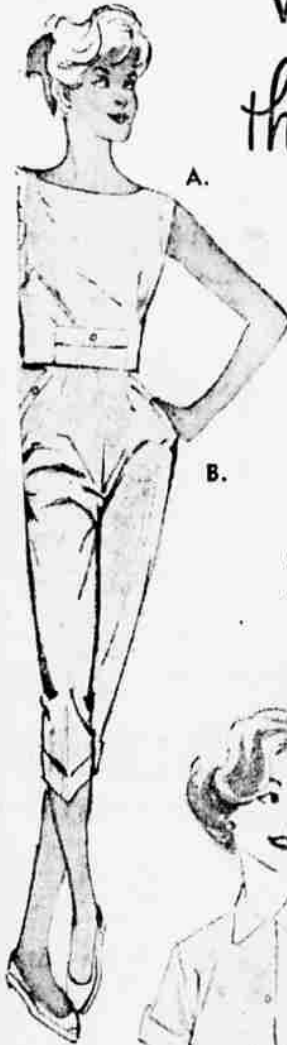
The Town Shop ... presents a

VERY SPECIAL WEEK FOR

that grab girl

a sparkling new world of sportswear fashions by Graffi! the most stunning, cutest playtogs ever... fabulous wash 'n wear fabrics or luscious knits... all color-keyed to give you a superlative wardrobe for spring and summer!

See them during Town Shop's special showing this week!



Use Your Charge Account or Lay Them Away

F. Classic blouse with stitched collar and pocket. Dacron and cotton. White, red, mint, bamboo, blue, tan, yellow. Sizes 30-40 3.98

G. Sleeveless sweetheart of 100% wash 'n wear cotton. Red, tan, peach, mint, helio, white, pink, black, yellow, aqua. Sizes 30-40 2.98



G.



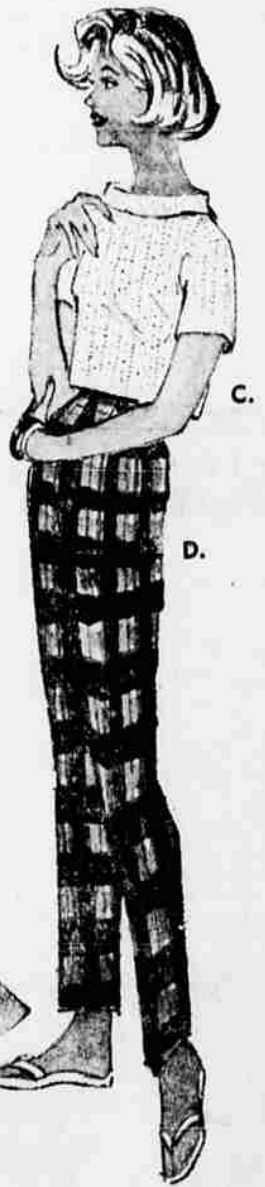
E. Sleeveless top and flair skirt in beautiful new checked seersucker. Definitely wash 'n wear. Pink, black, lite brown, & turquoise. Sizes 8-20 10.95

D. Capris never looked so good, wore so well... because the fabric is fabulous Galey & Lord Tarboon. Wash and wear so beautifully. Sizes 8 to 20 7.98

C. 100% cotton "Beehive" knit top. White only. Sizes S, M, L 3.98

B. Cuffed pusher in superlative sailcloth has no equal for wash 'n wear ease, wearing quality and carefree styling. Same colors as above. Sizes 8-20 4.98

A. Breezy crop top sleeveless overshirt in peerless "play-sail" sailcloth. Just wash and wear. Black, white, turquoise, coral, tan, green, blue. Sizes 8-20 3.98



C.

D.