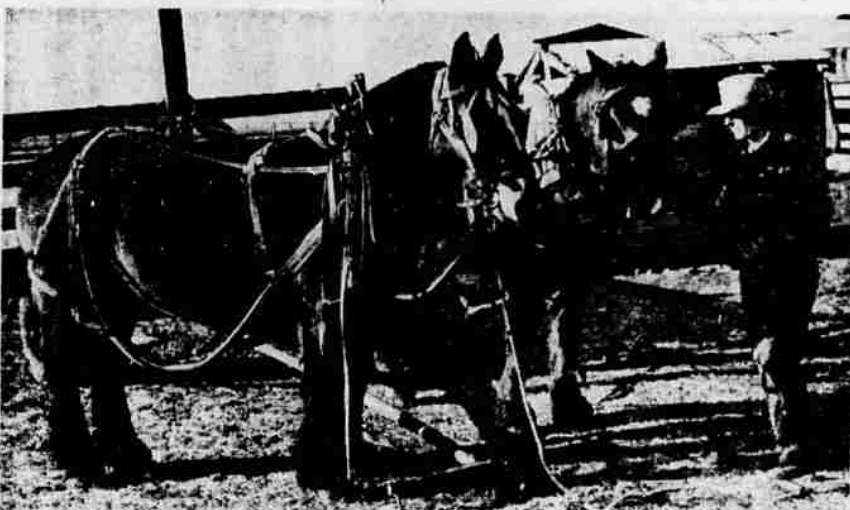




COOPERATION IS THE ANSWER when it comes to loading up the hay wagon for the morning run at the Kerns cattle ranch on the Keno Highway. Here Sydney boosts a bale out of the barn loft while her mother, Elaine, stands by to position it on the wagon. The dog, Sally, one of four shepherds on the place, was keeping a watchful eye on operations.



HITCHING UP IN THE MORNING can be a frosty job but Earl Kerns makes light work of it anyway. This team is one of two that he bought recently at the Lakeview sale of Canadian teams. "One of the best feeding teams I've ever had," Kerns says of the mares.

Lumber Makes Kitchen More Like Family Room

Lumber can make a kitchen appear to be something it is not. For, with some disguises, you can create or renovate a kitchen to make it look more like a family room than anything else. If you don't want to go this far, lumber will still go to give the room a warm and comfortable look with no sacrifice of modern convenience.

The basic aspect of this sleight of hand lies in lumber built-ins. These can include cupboards, cabinets and closets with special spots set aside for heavy or frequently used electrical appliances, roasting pans, coffee makers, etc. Furthermore, the sink can be enclosed by a cupboard below and this can match others above and below your counter space. Your refrigerator can perhaps be set into the wall or, if not, enclosed in a closet-type built-in set into a corner of the room. A double or single door can be planned to open against a wall and not be in the way. The refrigerator then can be hidden from view. This also can apply to your washer and drier.

Your choice of lumber will be important to the overall decor. A clear grade will give a more formal look than one with knot formations, as will a dark rather than a light wood or wood stain. In other words, if you are using a red finish a wood such as inland cedar or incense cedar will look somewhat more formal than a very light species such as Idaho white pine. If you are using a wood stain your choice of species is not

so important from the color standpoint, and any of the woods from the western pine region would be a fine choice since they all respond readily to stains.

If you like a knotty pine effect you can choose a species with big splashy knots, such as ponderosa pine, or small discreet knots, common to lodgepole pine. Other western pine region lumber that hits the middle ground in color and knot formation includes sugar pine, larch, Engelmann spruce, white fir, and Douglas fir.

There are other finishing possibilities for a kitchen with a wood decor. You can paint, though this hides much of the natural charm of the wood, but if you like color and the qualities of the wood to show you might try a brush-on, wipe-off pigmented stain. This type of finish can be worked up in any color, and, when you are using a knotty grade of lumber it is possible to treat the wood so that the knots will stand out in a contrasting tone.

Be sure in planning your kitchen to allow for good working light both on the walls and overhead. It also is wise to space electrical outlets about every four running feet at counter level for your appliances.

BASEBALL'S FIRST FAMILY CLEVELAND, Ohio (UPI) — Baseball's leading family were the Delahantys. Five brothers — Ed, Frank, Jim, Joe and Tom—all played in the major leagues.

SWEET LISTENING
CHICAGO (UPI) — The Fifth U.S. Army predicts that radios as small as sugar cubes, successfully developed for the Signal Corps, will play an increasingly important role in defense electronics.

FAST STROKERS
AUGUSTA, Ga. (UPI) — Gene Sarazen and George Fazio finished playing 18 holes in one hour and 57 minutes during the final round of the 1947 Masters Golf tournament.

ISSUE DRAFT CALL
WASHINGTON (UPI) — The Defense Department issued a call Monday for 6,000 draftees to be inducted into the Army during May. The same quota previously was set for March and April.

TELL-TAIL-LIGHTS
FALCONER, N.Y. (UPI) — Police stopped Lawrence R. Raylor, 35, to tell him the tail lights weren't working on his truck, discovered it wasn't his truck and arrested him for theft.

If it breaks, we replace it
Adams hard-faced, heat-treated Economy Plow Shares



Cross section shows extra steel where extra steel is needed

Special alloy steel and precision heat-treating make them the toughest of blade-type shares.

LOOK!
Same "deep suck" feature you get on original equipment!

They take the worst punishment a plowing operation can hand out. Try a set and see. Notice how they dig in and pull easily. See how they stay sharp, how the noses keep a point for the entire life of the blade. Try a set of Adams hard-faced, heat-treated economy plow shares now and watch tillage costs go down.

Adams blade-type shares available for John Deere • Oliver • Ford • International Harvester • Case • and many other plow bottoms.



J. W. KERNS
734 So. 6th Ph. TU 4-4197

NOW IS THE TIME TO BUY

BULK FERTILIZER

AT SIMPLOT SOILBUILDERS

The Only Bulk Fertilizer Distributor In The Basin Area!

WE'RE WORKING TO KEEP YOUR FERTILIZER COSTS DOWN ...



It's the easy way to fertilize! No back breaking sacks to handle . . . No sacks to dispose of. Just back the spreader up to the truck and open the gates! WE FURNISH THE BULK BINS FREE OF CHARGE!

SAVE MONEY
On Bulk Fertilizer

You can order your fertilizer from us confident that our prices will be in line! Yes . . . we bought heavy supplies early and our prices are competitive in every case!

WHY WAIT? PLACE YOUR ORDER NOW . . . AVOID THE SPRING RUSH!!

SIMPLOT SOILBUILDERS

KLAMATH FALLS and MALIN
Phone TU 2-1438 or MALIN 3-2947 OR CALL: Bruce Tolmie TU 4-6070 Gene Book TU 4-3887