

THE HOUSE OF THE WEEK

Split-Level Potential Fully Developed

DAVID L. BOWEN

Which of these features are you looking for in a house plan —

Dramatic living room arranged for gracious entertaining?

Careful attention to the connection of outdoor and indoor living areas?

Clearcut separation of formal and informal sections?

Original economy and easy maintenance?

All of these elements of good modern design, and others, are present in House of the Week X-96, a split-level gem created by Architect Rudolph A. Matern.

There are four bedrooms on the sleeping level plus another small room on the ground level that could be used as a fifth bedroom. There's a big reception foyer, a family room that flows without interruption through sliding glass doors to a sunken terrace garden, a breakfast balcony overlooking the family room, a lovely large fireplace and bow window in the living room, efficient U-shaped kitchen layout, a short but glamorous balcony, and 2½ bathrooms.

All of these aids to peace of mind and modern living come in a design covering 1,727 square feet of space on living and bedroom levels, plus 511 on the ground level. Thanks to the inherent economy of split level design, this ground level living space — plus the two-car garage — comes at only half the normal building cost.

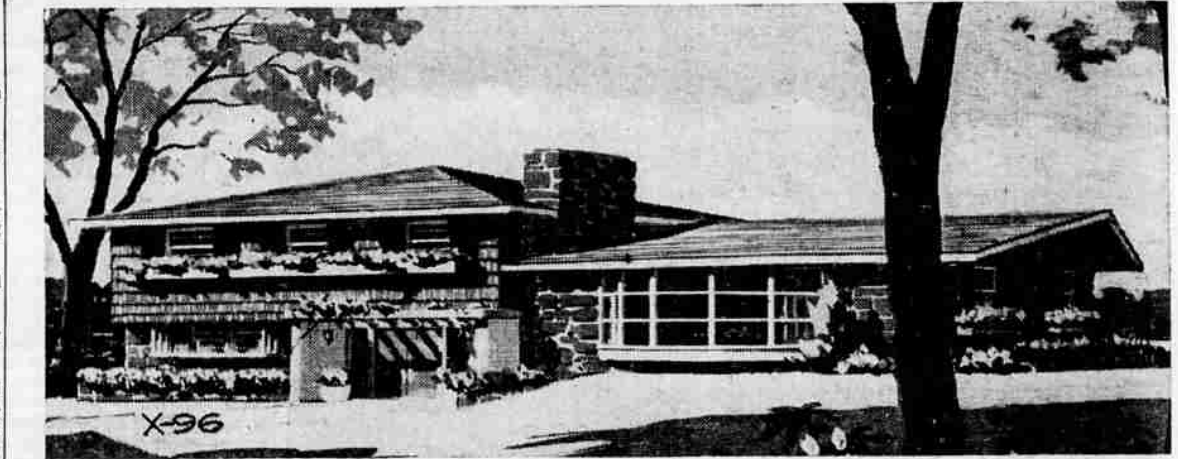
Bonus Space

The easiest way to picture this economy feature of the split level is to think of a long ranch house built over a basement. Now think of this same ranch split in the center with the left half raised so that the basement floor of the raised half is even with the ground. Total roof area is the

X-96 STATISTICS

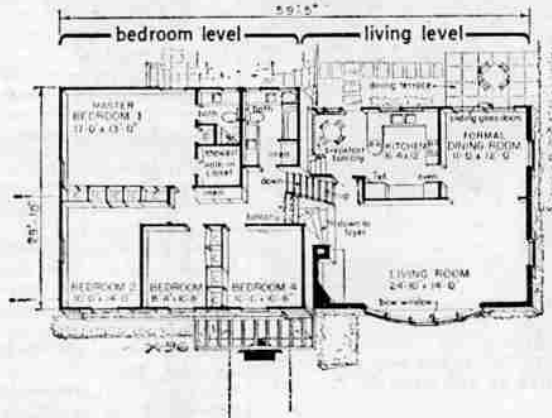
This home has nine rooms, with four bedrooms on the sleeping level, and 2½ baths. The habitable area of the living and bedroom level is 1,727 square feet, with an additional 511 on the ground level (not including two-car garage).

Dimensions are 59' 5" in width by 29' 10" in depth.

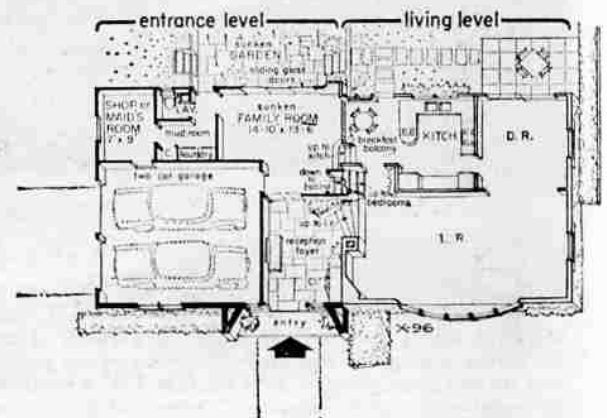


STATELY SPLIT: This nine-room split level has four bedrooms, 2½ baths and an exceptionally efficient floor plan.

The attractively accented entrance is on grade level, adding space and privacy to the living room.



MAIN LEVELS: Graceful stairways add glamor to both living and bedroom levels. These two floors offer 1,727 square feet of living space.



GROUND LEVEL: Entrance on grade level improves circulation while adding space to the living room.

same, perimeter walls are the same, yet you have increased the usable space by half. Basically, this is the great merit of the split. Often the advantage of this bonus space is frittered away by the use of small windows and design treatment which seems to forget the grade level is no longer basement, but the advantage is there nonetheless.

Principal device used to fully develop the split potential in X-96 was locating the entrance on the ground level. This allows more space for the living room, gives the living room, more separation, and at the same time aids circulation by providing a direct route from front door to living room and kitchen.

Over-all dimensions of X-96 are 59' 5" in width by 29' 10" in depth. The exterior is a pleasing combination of natural stone and

stained cedar shingles.

Additional Details

Extra attention was lavished on the front entrance of this design to give it a stately appearance. The double front doors are framed by brick columns on either side and an open trellis overhead.

A sloping lot is not a requirement for full exploitation of X-96. The home could be worked into level terrain by simple use of the fill obtained in excavation for the small basement section and the sunken rear garden.

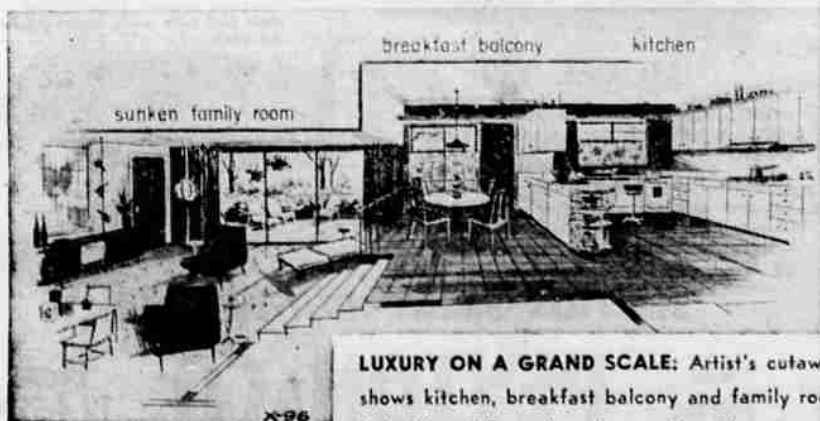
Another advantage of the grade level entrance is the fact that mud tracked in from the outside can be localized in the foyer, which has an easily cleaned slate-in-concrete floor. From the foyer, swinging doors lead to the family room and kitchen and a short curving stair-

way leads to the living room.

Bedrooms are eight steps up from the living level providing adequate separation without demanding a long stair climb. The master bedroom is a generous 17 x 13 feet, with walk-in closet and private bath. The other three bedrooms are in a line across the

front. Efficient grouping keeps half space at a minimum.

Plans call for a basement the size of the living level. This is roughly half the roofed area of the house and sufficient for furnace and storage without the waste basement space frequently found in large ranch homes.



LUXURY ON A GRAND SCALE: Artist's cutaway shows kitchen, breakfast balcony and family room linked by sliding glass doors with sunken terrace.

Send this coupon for your STUDY PLAN

YOU CAN GET a study plan for The House of The Week by filling in your name and address on the coupon on this page and sending it with 50 cents to this newspaper.

This study plan shows each floor of the house together with each of the four elevations, front, rear and sides of the house. It is scaled at 1/8-inch per foot. It includes a guide on "How to Get Your House Built."

You can take this study plan to your bank or other mortgage lender and to your builder and get rough estimates on the cost of construction in this area as well as an idea of the cost in relation in your budget.

With this information you will know whether you will want to proceed with construction by ordering working blueprints direct from the architect and asking for bids for the work.

STUDY PLAN ORDER COUPON

Building Editor:
Enclosed is 50 cents. Please send me a copy of the study plan of The House of The Week X-96

Name
(please print)
Street
City State