

(Continued from Page 3)

Gene Pierson who had gone on ahead of the tour. Gene had the fire going full blast trying to have the coffee ready for us on time.

Mitchell recreation area is dedicated to those who died there on May 5, 1945, by a Japanese bomb explosion. It was the only place on the American continent where death resulted from enemy action during World War II. The Mitchell recreation area is located on a Weyerhaeuser tree farm. Weyerhaeuser built the campground and monument to those who lost their lives on that dreadful day. They were Elsie Mitchell, 26, Jay Gifford 13, Edward Engen, 13, Dick Patzke, 14, Joan Patzke, 13 and Sherman Shoemaker, 11. This group was on a Sunday School outing when the tragedy occurred.

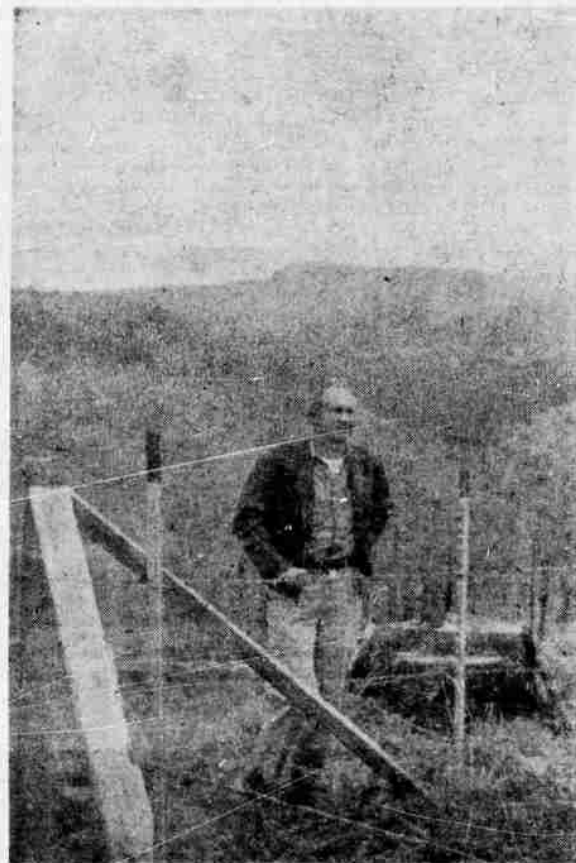
Some of the places we drove by were the south fork of the Sprague River, Finley Corrals summer fire guard station, Camp Creek, Salt Creek, Leonard Creek, Mitten Springs, Deming Creek, Long Creek, Rolling Springs, Buckboard Creek, Pot Hole Creek and Witworth Creek.

Stop five was at a white fir tree where we inspected damage done by the spruce bug worm which keeps eating the new growth of the needles of the trees. The needles of these trees stay on for seven years. If all the new growth is taken by the worms the tree will die in seven years. One moth lays about 150 eggs and prefers white fir and Douglas fir.

The ponderosa pine bark beetle infested area of the Buck Horn region was viewed, and bark of an infested tree was taken off and we saw the parasites at work. One side of the tree was riddled with holes made by the woodpeckers who are natural enemies of this bug, and the other side of the tree was untouched. The tree was cut into a ways to show the blue stain caused by these parasites.

We visited a timber harvest area which had been prepared for sale in Pot Hole Creek. The pine trees are marked on Bongburgs risk rating to pick the trees that will die in a 10-year period. In this area fir is worth about one third the price of pine.

From Pot Hole Creek area we drove on to Quartz Mountain where we viewed another project underway. We saw where trees were



ELLIS GROSS was the chief instructor on the show-me trip of the Bly District of the Fremont Forest last summer. He is shown here standing by the fence at one of the pine plantations maintained by the Forest Service. — Photo by McGee

being thinned due to damage by the parasitic plant the mistletoe.

When I used to think of mistletoe I thought of the gay holiday season where the mistletoe is hung for that unexpected kiss, but today we learned how mischievous and harmful it can be.

The forest service crew is removing the infested trees which are sold and harvested to remove the source of seed which drop from the mistletoe plants on these trees to the branches of the young trees below them. The mistletoe grows on the stem and branches of a tree, sapping the food and nourishment from it, causing a loss of growth and sometimes death of the infested tree.

After the overstory trees have been cut and removed, Forest Service crews will remove the unmerchantable and small trees that are infested to complete the control work. It will cost about \$70 an acre to cut and burn the mistletoe infested slash. In addition to controlling the mistletoe the area is being thinned to get more growth on a few trees instead of a small growth on a lot of trees. About 25 trees per acre are being pruned of their lower limbs to improve the quality of the sawlogs they will produce.

We toured the west and south side of Gearheart Mountain and went halfway up the mountain. Gearheart Mountain is approxi-

mately 8,400 feet. The tour covered about 50 miles, and we were in and out of Klamath County and Lake County at different intervals.

We drove through the Sprague River recreation area on the return trip. Didn't stop as the hour was growing late but did see the many picnic tables and benches, camp stoves and other facilities available for the camper. There were a few trailer houses parked there and the fishermen were seen casting into the beautiful Sprague River. We saw the path that led to that grand old swimming hole which is much used by local residents and tourists during the warm weather. This park is maintained by the crew of the Bly district ranger station.

We arrived at the ranger station at 5:20 p.m. loaded down with specimens we picked up along the way. Cameras contained film of pictures taken of just about everything that could be thought of.

## 69 Cattle On Missing List

Sixty nine cattle made the latest estray bulletin issued this week by the State Department of Agriculture's Division of Animal Industry, with the largest loss—32 yearling steers—reported missing from the Warm Springs area.

A whiteface heifer calf was AWOL from Springfield; four cows, with white-face calves and one steer, are estray from Enterprise; seven whiteface and Angus steers have been missing since November 1 in the Milton-Freewater area. A Jacksonville rancher reports the loss of one whiteface heifer. A Blue Roan cow, a steer and three Holstein heifers, are missing from a Eugene area ranch.

The largest losses were reported by a Princeton ranch: 15 yearling white-face steers from one location and 33 yearling steers from another field.

The department's livestock officers and brand inspectors as well as sheriffs' offices and state police have been given descriptions of the animals.



A PORCUPINE POISON station was one of the many items of interest on the forest area tour. Here, left to right, Mrs. Stella Olson, Mrs. Jewel Cambron and Barbara Gross check the installation. — Photo by McGee



THE LOOKOUT TOWER at the Bly Ranger Station is one of many in the chain of fire spotting stations scattered through the nation's forests. — Photo by McGee



DEMING CREEK makes a pretty picture as it flows through the old burn at this point on the show-me trip of the area. Just below the point pictured is a trash trap installed in one of the many culverts. — Photo by McGee

## Own a 'Jeep'?



Authorized parts, sales and service for all —

'Jeep' vehicles  
BASIN MOTORS  
424 So. 6th TU 4-7778

## FLYING LESSONS

And Instrument Instruction -

Learn to fly . . . for business or pleasure! We offer a complete flying course for only \$40 down and 25.69 per month.



MEET YOUR SCHEDULE . . . anywhere — anytime — LEARN TO FLY

### AIR CHARTER

- It's Fast!
- It's Convenient!
- It's Comfortable!
- It's Fun!

WE HAVE A FAST, DEPENDABLE AIR AMBULANCE SERVICE

KLAMATH AIRCRAFT SERVICE  
Kingsley Field Phone TU 4-5367 or TU 4-7858