

## Builtins Afford Luxury Of Space In Small Homes

How to make a pint-sized master bedroom appear both spacious and lovely is a problem besetting many a homemaker.

The key to decorating, many have discovered, lies in using interesting materials and textures for the walls and floors of the tiny bedroom, and in choosing furnishings of clean, simple line.

To gain maximum space mileage, smart homeowners find that substituting built-in chiffoniers and specially designed closets for conventional furniture gives added square footage. Even the bed can

be made less visually overwhelming in size with a little know-how.

Here, the trick is to do away with both footboard and headboard. To replace the headboard, clever decorators use a striking accent wall. This not only relieves space within the room, but also gives opportunity for individual design expression.

In this manner, dramatic "headboards" have been created with wall paneling or rough-sawn western red cedar. The rough cedar introduces strong texture into the room, an element very much need-

ed when dealing with small, cubical spaces. Finished naturally, the cedar's rich, ruddy coloring emanates warmth and candid beauty.

As a complement to the drama of the rough cedar wall, a silky surfaced bedspread should be used. Color possibilities are limitless. For a serene atmosphere, pale, clear blue for the bedspread has been used with stunning effect, especially when backed by oyster white in a loop carpet and repeated for nightstands and closet fronts.

Naturally finished cedar is an equally good backdrop for the more heady shades of red, gold, russet or for cool sea colors.

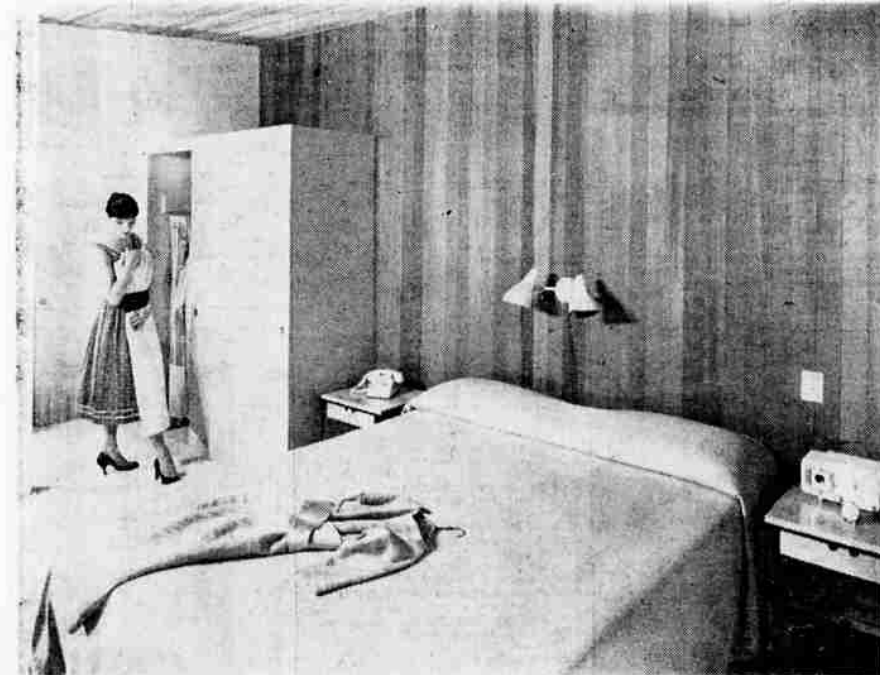
Other intriguing headboard walls have been designed of white pock-

et Douglas fir, a wood in which tiny open pores are scattered across the face of the panel board. An elegant white-and-gold boudoir can be created using the white pocket accent wall as the starter. Panel boards are brushed with white paint which is rubbed off before it is completely dry so that the wood's light tracing of grain is still distinguishable. Metallic gold paint is then brushed into the open

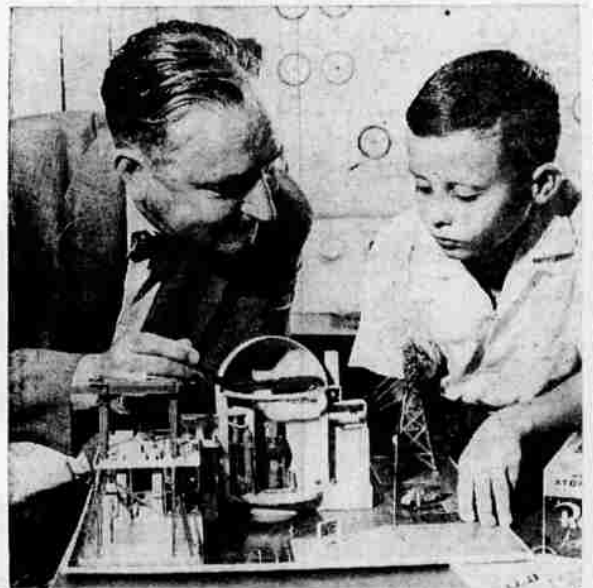
pores, leaving a hint of glitter across the wall.

There are any number of possibilities for striking headboard walls when using distinctive woods.

**Fiberglass Boat Building Materials**  
**The Gun Store**  
 714 Main Ph. TU 4-3862



**NEWS IN HEADBOARDS** — Latest trend in using a handsome wall as a headboard for the bed. In this case, rough-sawn western red cedar boards were used as paneling for accent wall. Rich, ruddy coloring of the cedar is a beautiful compliment to the oyster whites used for bedspread, carpeting, and built-in closets.



**MODEL ATOM POWER PLANT** — Dr. William E. Shoup points out the fine details of a scale model atomic power plant to 12-year-old George Gail in Pittsburgh, Pa. The kit, which will be on the market well in time to make a budding Einstein happy at Christmas, is a replica of a typical power-generating station. Included are reactor, steam generator, transformers, circuit-breakers and transmission lines. Shoup is technical director of the Westinghouse atomic power division.

**LESS BOUNCE**

NEW YORK (UPI)—Automation will speed the bounce of rubber checks, according to the Office Equipment Manufacturers Institute. That's because magnetically coded checks, which are paving the way for automation of the nation's banking business, will give depositors less time to cover checks they cash out of town against insufficient funds in home banks.

**PIG-WATCHERS SQUEAL**

BRIGHTON, N.Y. (UPI)—Joseph Perry, 34, was thrown into the same "pen" from which he'd tried to get some pigs. Perry was given 30 days in the Monroe County Penitentiary for sending word into the jail that he would pay cigarettes, liquor and money if the two trustees guarding the prison's 300 pigs would let him have some of them. The trustees told on him.

**BUSY BUSINESS**

NEW YORK (UPI)—The nation's food chain stores now do a whopping 23-billion-dollar a year business, according to Chain Store Age magazine. That's an increase of six billion dollars since 1954. Meat accounts for 25 per cent of the total volume.

See Lucas Furniture For  
**HARD SURFACE FLOOR COVERING**

Free Estimates  
 • Tile  
 • Linoleum  
 • Formica Work  
 Expert Installation  
 Phone TU 4-3134  
**LUCAS FURNITURE**  
 195 E. Main

Be modern with  
**MOEN**

NEW SINGLE HANDLE FAUCET  
**IN YOUR KITCHEN**  
 ALSO FOR LAVATORY AND SHOWER  
**G. C. MOTLEY, Inc.**  
 812 Klamath Ave.  
 Phone TU 4-6616

**BIG ENAMEL VALUE!**

**SHERWIN-WILLIAMS**  
 High-Gloss  
**ENAMELOID**

- Deluxe Interior and Exterior Enamel.
- Gives new life to furniture — All woodwork.
- Ideal for kitchen and bathroom walls.
- One-Coat Enamel.

Pints . . . \$1.60 Quarts . . . \$2.83

**A & B**  
**Paint Store**

PHONE TU 4-3873 FOR ...

**FUEL**  
 ORDER NOW!

**FUEL OIL**  
 Highest Quality with Inferno Added for Cleaner Burning

**UTAH COAL**  
 Direct from the Mine to Us. Saves You Money!

**Pres-to-Logs**  
 The Clean, efficient fuel for Fireplace or Stoves

DON'T RISK RUNNING OUT OF FUEL! USE OUR "CHECK & FILL" SYSTEM. ONE CALL TO US KEEPS YOU FULLY SUPPLIED ALL WINTER LONG!

**Western**  
**OIL & BURNER CO.**  
 1845 South 6th

We Give T.D. Stamps

Electric Heat  
**the THERMADOR / TWINS**

I HEAT YOUR COLD WALLS!  
 I HEAT COLD FLOORS FIRST AND KEEP HIS HEAT FROM PILING UP ON THE CEILING!

**THERMADOR**  
 BASEBOARD HEATER

**THERMADOR "NW"**  
 Turbo-Circulating Wall Heater

They Go Together . . . Baseboard heaters are fine for many homes . . . but they can't do the best job alone! Quiet, maintenance-free Turbo-circulating Thermador wall heaters add the POWER-AIR-CIRCULATION every heating system needs to minimize condensation, prevent heat layering on ceilings, keep every corner of your rooms at thermostat temperature!

**Shaffer Electric**  
 Town & Country Shopping Center