

Lumber Paneling Ranks High, Is Very Versatile

People are coming to realize more and more that wall paneling need not be used in strictly traditional ways. Beautiful though it is in early American houses or reproductions, it has become an eye-stopper in modern architectural terms. The real reason for its ever-increasing popularity is its versatility.

The varying textures and color possibilities of lumber paneling are two of its most appealing characteristics. Add to these features a real branching out in installation designs, and you can see how and why paneling has kept pace with decorating trends, offering both beauty and practicality.

As an example of the scope of paneling, the Western Pine Association points out that more and more owners are using rough-sawn, etched, or stippled paneling as well as the more familiar smooth-surfaced type. Though these same people may often choose a wood stain, clear finish, or paint, a great many of them are turning to the increasingly popular pigmented stains which lend richness of color but allow the natural characteristics of the wood, such as grain, texture, and knots, to show through.

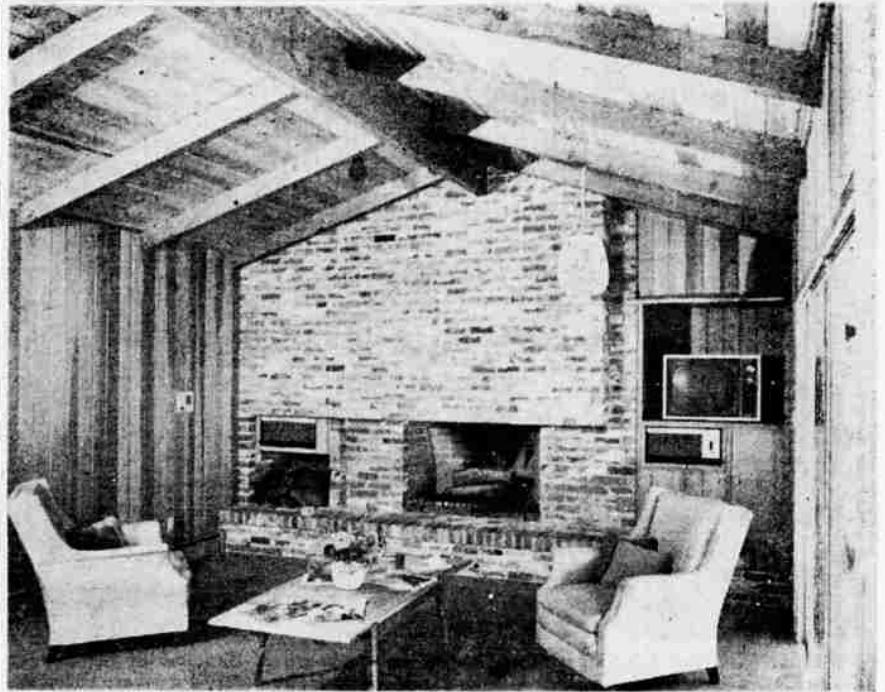
To round out these new concepts, people are installing their

paneling in refreshing new ways. No longer tied exclusively to horizontal or vertical patterns, they are installing lumber paneling in herringbone, diagonal, and even radial designs. They are also calling on board and batten, board and gap, and board on board treatments for use inside the house.

These all add up to a new appreciation of paneling's flexibility as well as its beauty, for paneling is a building and decorating material that works well almost anywhere. Some of the most readily available and easy to work species come from the western pine region. There are 10 woods from this area—ponderosa pine, Idaho white pine, sugar pine, lodgepole pine, inland red cedar, incense cedar, larch, Engelmann spruce, white fir, and Douglas fir.

Quite apart from new effects are the relatively new uses for paneling. One of these is in bathrooms where high humidity formerly made lumber paneling impractical. Now, with good commercial sealers, wood appears on walls and in built-ins in many modern bathrooms and often finished with the colorful pigmented stains referred to earlier.

Your lumber dealer or, if you wish, a decorator can give you a great deal of valuable advice on how best to use paneling and on how to get it to work for you in intriguing and practical new ways.



PANELING WORKS WONDERS — Western pine paneling can work in many ways. Here, incense cedar was used for walls, built-ins, and decking for the ceiling. The beams are Douglas fir. A door of matching paneling can be dropped down over the television set when it is not in use. Note, too, how the stereo speakers under the TV and in the wood bin are balanced on either side of the handsome fireplace. The charming overall effect is one of richness, but the room has been kept simple.

Ford Trucks Last Longer

on the FARM

See your Farm Truck Headquarters

BALSIGER

MOTOR CO.

Main St. Exp. Ph. TU 4-3121

NEWCOMER

DES MOINES, Iowa (UPI) — Bankers Life Company has become the nation's 17th insurance company to boast total assets of one billion dollars. Founded in 1879, Bankers Life is the only insurance company west of the Mississippi to reach the billion-dollar figure. It has 1,200,000 policyholders.

California Senate Takes Close Look At Game Survey, Checks On Department Action

By DE VAN L. SHUMWAY
SACRAMENTO (UPI)—A senate committee is going to find out if the California Fish and Game Commission has been paying attention to Booz, Allen and Hamilton. The Senate Fact-Finding Committee on Natural Resources, headed by Sen. J. Howard Williams (R-Porterville), recently held a public hearing to examine recommendations made in the consulting firm's \$100,000 report.

The report resulted from a year-long study of operations of the Fish and Game Department. It contained a number of recommendations in its 800 pages.

Williams said in a news release that although the final report was submitted December 8, 1958, "as yet none of the major recommendations contained in the report have been put into effect."

A spokesman for the department immediately took issue with this statement.

As an example he cited these recommendations:

1. The Marine resources division should be disturbed as little as possible. This has been done.
2. Conservation education be broadened. This has been done.
3. The department's monthly magazine be changed to stress research and programs of the department. This is in the process of being done.
4. Use predator control only where game are doing severe damage. This has been done.
5. Use special seasons to solve deer problems in some areas. This is being done.
6. Cut down the antelope herd through a controlled hunt. This has been done.
7. Harvest elk. The commission tried an elk method of doing this, by peddling them to zoos and private individuals. This did not work but the public won't accept a hunt, according to the spokesman.
8. Eliminate the game farm system. This is being done so far as possible; right now it's being consolidated.
9. Use money from the put and take program for more land acquisition. Said the spokesman: "Well, we'd certainly like to but imagine

the public reaction if we eliminated put and take."

10. Review policies of releasing upland game to the wild. That's being done.

11. Reduce catchable trout bag limit. The department determinations this year are to reduce the statewide limit to 10, substituting for 10 in the south and 15 in the north.

Williams' committee apparently plans to go into organizational and financial recommendations of BA&H, including recommendations that the state be divided into four rather than five regions as well as 22 land districts and three marine districts.

Another recommendation of the consulting firm was that the department headquarters should be the top-level part of departmental organization. Williams intends to find out what has been done about this recommendation.

Williams said his committee feels the recommendations represent "such a radical departure from the current functional and organizational structure of the department that it is the committee's desire to give each proposal careful consideration to determine whether or not the suggested changes are practical and financially feasible."

Sportsmen groups have been invited to participate in the December hearings.

The department spokesman said the agency is busy preparing its case for the hearing.

Meanwhile William E. Warne, director, took time out to answer criticism from another legislator, Assemblywoman Pauline Davis (D-Portola), chairman of the lower chamber's fish and game committee.

Without mentioning Miss Davis by name, Warne said that reports that fish and hunting licenses will be increased in cost next year or two "are not true."

"The department's surplus has increased materially to more than four million dollars since the increase two years ago and our long range plans are keyed to maintaining a reasonable balance between income and outgo without increased fees," said Warne.



SITTING ON TOP — Decked out in an eye-arresting outfit in black and yellow, pretty Japanese actress Yoko Tani perches on the roof of her hotel in Rome. She had just finished making a movie in the city.

ANTI-MORTAR RADAR

SYRACUSE, N.Y. (UPI)—A mobile radar system capable of pinpointing the location of enemy mortars more than six miles away has been developed by the General Electric Company. The trailer-mounted device, the AN-MPQ-4A, is designed to protect the foot soldier from mortar fire, considered his most deadly enemy. It detects the shell in flight and electronically computes the exact spot from which it was fired.

NIECE BEFORE AUNT

OLEAN, N.Y. (UPI)—Mrs. Donald Neuland gave birth to her first child—a girl—about six hours before her mother, Mrs. Lawrence Keller, gave birth to her 10th child, also a girl, at St. Francis Hospital.

Plant America

BARGAIN PRICES NOW AT LAKESHORE GARDENS NURSERY

on all kinds of beautiful Evergreens, Flowering Shrubs, Flowering Trees, Shade & Fruit Trees

In order to reduce stock before the change of ownership, Jan. 1st, Mrs. Myers is offering her entire line of choice Nursery Stock at Greatly Reduced Prices!

LAKESHORE GARDENS NURSERY
879 Lakeshore TU 4-4286

TRUCK OWNERS

State Required

Weight Number Decals 58¢

Low goes into effect Jan. 1, 1960 get them now at . . . each

Juckeland Motors Inc.
11th & Klamoth Phone TU 2-2581

Christmas Decorations

Make Your Own Cut Outs

* Nativity Scene * Santa - Sleigh
* Reindeer * Season's Greetings

COLORFUL . . . EASY TO MAKE

PASTE ON PLYWOOD

from 25c to \$1.00

Swan Lake Moulding Co.
3226 S. 6th TU 4-5145