

# Rockefeller Faces Task In His Stop Nixon Drive

By JAMES MARLOW

Associated Press News Analyst  
WASHINGTON (AP) — Cut through the smiles, handshakes and careful speeches and New York's Gov. Nelson A. Rockefeller seems to be saying of his rival, Vice President Richard M. Nixon: "He could do it well but I could do it better."

In short, so far Rockefeller has been making a personality contest of his search for the Republican presidential nomination. He may have to keep on doing it or else try the high-minded approach.

For him the in-between tactic—political slam-bang—seems out. The odds against him—unless there is a change in events at home and abroad—are more than just the vice president's head-start toward the nomination.

It's no wonder that Nixon, an ambitious young man with two terms as vice president, has lined up so many Republican pros on his side. He has worked hard for them, for the party, for himself, and in his job.

Nixon, of necessity, almost has to be tongue-tied in these next few months as he tries to sew up the nomination.

Since he has been closely identified with the Eisenhower programs, policies, and performances he can't do much more than promise a continuation of them.

That seems to make good political sense right now when the country is highly prosperous and the world looks a little nearer peace than it has in years.

Nixon faces one big handicap. He'll be in the role of defender. He is hardest hitting when he can be aggressive—as he was against the Truman administration—and not on the defensive.

But if Nixon, an important figure in the administration, is inhibited from criticizing it or suggesting switches, the same limitation would seem to apply to Rockefeller.

As a faithful Republican, needing Republican support to get the nomination at next summer's convention, he can't afford to be very critical of the administration, if at all, without splitting the party.

If he wants to appeal to the independent vote, Rockefeller may even feel restrained about criticizing Democrats since he has to hope for every vote he can grab off.

Nor is Rockefeller in a good position to see off Nixon. Rockefeller's tearing him down, to get the nomination, would be a wrecking job made to order for the Democrats if Nixon later was the one nominated.

But if Rockefeller can't bang the Eisenhower administration, avoids knocking Democrats, and lays off Nixon, what claim can he

have on the Republican nomination? Through personality alone he might try to convince the Republican pros to pick him if they think Nixon couldn't win against a Democrat.

Or, he could offer new and constructive ideas to set him apart a bit from Eisenhower and Nixon

but not so far that he will lose his Republican identity. That would be the high-minded, non-critical approach.

That might attract the independents, boost his standing in the polls, influence the pros. He's in a tough and delicate spot, although he has a big staff to help him get off it.

**OSBORN HOTEL**  
EUGENE, ORE.

Mrs. J. H. Early—Joe Early Jr.  
Proprietors  
Thoroughly Modern

**SARI'S**

Will Be Closed Thanksgiving and Wishes All Our Patrons and Friends A Very Happy Thanksgiving.

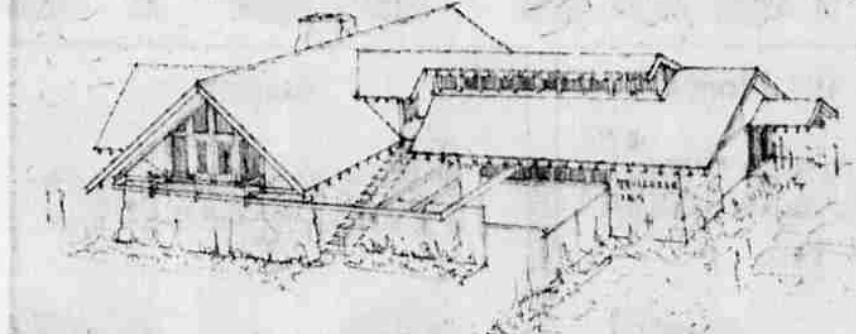
### SPONSOR DANCE

MONTAGUE — Mrs. Hilda Cooley, president of the Shasta Valley Community Club of Montague, announced that the club will again sponsor the annual Thanksgiving Day Dance to be held Thursday evening, November 25, in the Montague Auditorium. Music will be furnished by the Tip-Toppers.

Esek Hopkins was the first commander of the Continental Navy.

### J. Henry Helser & Co.

Investment Managers—Established 1908  
Office in Principle West Coast Cities  
Ernest Bussey  
2536 Vine Ave. TU 4-5041  
Klamath Falls



**ARCHITECT'S RENDERING** of the structure which will replace the old Pioneer Lodge in the Harriman district which was destroyed by fire late in September was prepared by Nina Pence, Klamath Falls architect. Wayne W. Keefe and his brother, C. B. Keefe, are superintending the construction. The new building will be two stories with living quarters for the Wayne Keefers upstairs. The main floor will contain a large lounge with fireplace, a dining room, coffee shop and kitchen. Ground area covered will be 2,500 square feet on the first level and 1,000 square feet on the second level. The lodge will be renamed, owners state.

## CITY BRIEFS

**Circle** — The Mary Martha Circle of the Immanuel Baptist Church will meet at 7 p.m. Tuesday, November 24, at the church. After the regular meeting there will be an election of officers. All members urged to be present.

**Post No. 8** — American Legion announces its monthly promenade will be held at 8 p.m. Wednesday, November 25, in the American Legion Hall on Pine Street. Refreshments will be served. All 40 and 8 members are encouraged to attend.

**Patient** — A recent patient at Klamath Valley Hospital was Mrs. George (Betty) Kingsbury of Sturdivant Street who underwent an emergency appendectomy early last Thursday morning.

**The Public** — is invited and urged to attend the showing of the film "The Dark Wave" in the Balsiger Motors Showroom Tuesday evening, November 24, at 8 o'clock. The 23-minute film on epilepsy was very difficult to obtain and may not be readily available again soon. It will be presented by Dr. Don Rice. The regular monthly meeting of the Klamath Association for the Help of Retarded Children will follow the film presentation.

**Sojourners** — will meet for a no-host luncheon Wednesday, November 25, at 12:30 p.m. in the Pine Grove Room of the Willard Hotel. There will be a short business meeting followed by an afternoon of cards. All newcomers are welcome. For information call Mrs. Louise Guise, TU 2-5078.

**Chapter 467** — Women of the Moose, will conduct a rummage sale Saturday, December 5, from 10 a.m. to 4 p.m. at the Pelican Theater Building. Please bring your rummage to the Moose Hall prior to the sale or to the Pelican building between 9 and 10 the morning of the sale.

**Great Books** — members are reminded that tonight's discussion of St. Augustine will be the last meeting until January 11.

**Happy Hour Club** — will meet at the Pelican Cafe Tuesday, November 24, with Mrs. Alice Lawrence, hostess. The dessert luncheon will be at 1:30 p.m.

**Last River Grange** — No. 846, will hold its regular Friday night card party November 27 at 8 p.m. at the grange hall.

**Meeting** — Ewauna Toastmistress Club will meet tonight at 7:30 in the Willard Hotel. Visitors are invited.

**A Special** — Thanksgiving service will be held on Thursday, Thanksgiving Day, at 11 a.m. at the First Church of Christ Scientist, Tenth and Washington streets. A period will be devoted to voluntary expressions of gratitude for God's goodness which will be included in the service.

**Meeting** — Mothers of Rainbow Girls will meet at the Scottish Rite Temple tonight at 7:30. Please attend.

**Merry Mixers** — beginners square dance class will dance Tuesday night, this week only.

**Film Classics** — Group will meet for the November program Friday, November 27, at 8 p.m. in the Roosevelt School Auditorium. The films will be "Albert Schweitzer," two short Chaplin comedies and "House," a museum of modern film. Admission will be by subscription only.

**Rainbow Girls** — will meet tonight at 7:30 at the Scottish Rite Temple. Take dollar bills and dressed dolls to be sent to the Shriner's Crippled Children's Hospital. Mothers invited.

**Mother And Baby** — Care classes (free), sponsored by the Red Cross, will begin a new class Tuesday, December 1, at 7:30 p.m. at the Cherub Diaper Service, 2000 Sixth Street. Instruction by Mrs. Naomi Miller, trained nurse, is planned for prospective parents. Register by calling TU 4-4125.

**Catholic Daughters** — of America will hold a regular social session tonight at 8 o'clock in the parish hall. Sgt. Charles Bennett of Kingsley Field will show colored films. All members are requested to attend.

**Greens Gathering** — The Senior Westminster Fellowship of Peace Memorial Church will have the annual greens gathering party on Saturday, November 28, greens to be used to decorate the church for the coming season.

**ALWAYS VISIBLE**  
Lenin's coffin rests in a hermetically-sealed pyramid of cut glass so transparent that the head of the Soviet hero is visible to the public at all times. Soviet soldiers guard the tomb day and night.

Lenin was the first woven material for clothing.

## Woman Attends Fair Hearing

MONTAGUE — Mrs. Alice Hestig of Montague returned home recently from Sacramento where she had attended hearings of the joint legislative committee on fair allocations and classification. She was accompanied by John K. Janison and Edward Mathews, county fair manager, all three having gone as representatives from Siskiyou County.

Sen. Edwin J. Regan (D) of Weaverville conducted the hearings which were the first ever held before a permanent committee on behalf of California fairs. Fair officials testified on financing, interim uses, livestock, attendance and promotion, youth programs and other phases of fair management.

## Permits Needed On Forest Land

YREKA — According to the Yreka office of the Klamath National Forest Service, individual permits will be necessary again this year to cut Christmas trees on National Forest land. No permits will be issued from the administrative office in Yreka, but may be obtained at the three USFS district ranger stations at Fort Jones, Mount Hebron and Oak Knoll.

Local law enforcement officers have been alerted to watch for violations of the law requiring possession of permits before trees may be cut and transported from National Forest land. If an individual is in possession of written authorization from a property owner, he may remove trees from privately owned land. Removing of trees from public or private property without proper authorization is a misdemeanor punishable by up to a \$200 fine, six months in jail or both.

## Pondosa Firm Is Top Bidder

McCLOUD — Cheney - Grant Lumber Company of Pondosa was high bidder at Redding recently on over six million feet of predominantly white fir timber located on the Hambone-Pump unit east of McCloud. High bid was \$127,892. Pondosa pine, \$33.45, sugar pine, \$37.10, white fir, \$25.75, Douglas fir, \$26.60, incense cedar, \$13.85 per 1,000 feet.

Other bidders were Chiloquin Timber Company of Klamath Falls, Loveness Timber Company and Loveness Saw Mill Company, both of Canby.

**RCA Whirlpool**  
"Make Your Home Happier With a New Appliance"



**BUILT-IN DISHWASHER**  
**\$349<sup>95</sup>**  
normal installation  
easiest terms  
Model FU-60

Custom-fitted to your kitchen, your colors  
Washes dishes for 12 persons all at once—and one dial does it all. Extra power—washes, rinses, dries spotlessly, safely; no pre-scrubbing. Ready-Rinse for dishes that don't need sudsing. Flip-Top Rack for easiest loading. Built-in water heater.

USE OUR E-Z PAY PLAN OR LAY IT AWAY  
**B&B Radio & Electric**  
316 So. 6th Ph. TU 2-4434  
Always Plenty of Free Parking on Our Lot!

**Improve Your Fireplace!**



**Therma-Rite**  
TEMPERED GLASS ENCLOSURE  
FRAMED IN SOLID BRASS!

- LOWERS FUEL BILLS
- NO FLOOR DRAFTS
- NO SPARKS
- NO SMOKE

UNIFORM HEAT FROM FLOOR TO CEILING! BURN WOOD, BRIGETSTS OR SIMILAR FUELS! YOU CONTROL FIRE... YOUR HOME AND FAMILY SAFER!  
Makes your hearthside lover... more lovable for a lifetime!

SEND FIREPLACE WIDTH AND HEIGHT... RECEIVE  
**Colorful Booklet FREE** WRITE OR PHONE...

**Bell's HARDWARE**  
528 Main

**PENNEY'S IS YOUR SANTA**  
ALWAYS FIRST QUALITY!



**EASY-CARE COTTONS IN BRIGHT LITTLE GIRL RED**  
First color little girls recognize... red! Mamas will love these, they machine wash at medium set, need little or no ironing and stay bright! right!  
**2<sup>98</sup>**  
toddler sizes



**PRETTY OUTSTANDING! NYLON BOUFFANT SLIP**  
Ruffles, lace and ribbons! That's what makes this slip so beautiful. Nylon tricot top, taffeted skirt. Hand washable. Elasticized back adjustable straps. Pastels.  
**2<sup>98</sup>**  
sizes 4 to 14



**PANTY SETS**  
"Dolly and Me" 98¢  
nylon ruffled sets. White-pink, white-blue. 2-8

**BULKY SWEATERS**  
Orlon wide stripe cardigan style. 6<sup>95</sup>  
Fashion right. Completely washable. Girls. 7-14

**Toddler Coordinates**  
Washable wool-nylon vest, skirt, slacks and cotton blouse coordinates. Sharp as can be. 2-4

**Girls Dresses**  
Christmas styled 10.95  
with Christmas fabrics. Velvet 7-14  
jupe, r, satin blouses. 8.95  
3-6x

**Infants Blankets**  
Boxed for gift giving. 100% dacron in pastel colors. Lightweight and washable. 6<sup>95</sup>

**BOYS SWEATERS**  
Bulky orlon slip-over. Popular style new coordinating colors. 4-8, 3.98. Boys. 10-18

**Plaid Sport Shirts**  
Popular Dan River plaids are excellent gifts. Practical and good looking. 1<sup>59</sup>  
4-18

**Boys Knit P.J.'s**  
Many western scenes printed on combed cotton. Elastic waist. Easy care fabric. 1<sup>98</sup>  
4-8

**PLUSH BEAR! 3 FEET TALL!**  
**4<sup>44</sup>**  
A big hit with tots, teens, toddlers! He's made of rayon plush 'n stuffed with cotton! Cute pom pom nose, large ribbon, too... huggable as he can be!



**KNIT SHIRT MATCHES HIS CORDUROY SLACKS**  
Cotton jersey knit sport shirt combines with printed corduroy slacks for a perfect gift outfit. Both are fully machine washable. Both for one budget price.  
**3<sup>98</sup>**  
junior boys' sizes 3 to 8



**AUTHENTICALLY STYLED WESTERN SET FOR BOYS**  
He'll be the marshall in Penney's new double-breasted shirt-vest, jeans to match, string bow tie and badge. The fabric? Rugged Sanforized® cotton twill.  
**3<sup>98</sup>**  
junior boys' sizes 2 to 8

**BUY NOW ON PENNEY'S LAY-AWAY PLAN**