

MARKETS and FINANCE

Stocks WALL STREET NEW YORK (AP) — The stock market closed sharply higher today despite a bit of profit taking just before the final bell. Trading was active.

Table of stock prices including Admiral Corporation, A. J. Industries, Allied Chemical, etc.

Livestock KLAMATH FALLS LIVESTOCK AUCTION MARKET November 17, 1959 Receipt: Cattle 514, Hogs 31, Sheep 32.

RED BLUFF (UPI-FSMNS) — Weekly livestock auction: Cattle salable 1,200, including 300 calves. Active, cows steady, stockers and feeders steady to strong.

STOCKTON (UPI - FSMNS) — Livestock: Cattle 50, Calves none, Hogs 25, Sheep none.

GRAIN CHICAGO (AP) — High Low Close Prev. Close Wheat Dec 2.01 2.00 2.00 2.01

POTATOES SAN FRANCISCO (UPI-FSMNS) — Potatoes: Russets Klamath U.S. 1A 3-1A 4.25-4.50.

POTATO MARKET INFORMATION

Table with columns: RAIL AND TRUCK SHIPMENTS (C/L EQUIV.), ON DATE, SEASON TO DATE, KLAMATH BASIN, CENTRAL OREGON, IDAHO, WASHINGTON, U.S. TOTAL.

Potato Aide Slates Visit

TULELAKE—E. B. Partell, secretary - manager of the California Long White Advisory Board, will be in Tulelake, Friday, November 20, for an informal luncheon meeting with interested growers.

Oregon Weather

Table with columns: By THE ASSOCIATED PRESS, 24 hours to 4:30 a.m. Wednesday, Max. Min. Prep.

Western Oregon — Mostly cloudy through Wednesday with occasional rain continuing in the north and scattered showers spreading to the south by Thursday afternoon.

Funerals

KLINGBEIL LAKEVIEW — Funeral services for Hugh Klingbeil, 54, will be held at 2 p.m. on Saturday from the Pearson Funeral Home, Portland.

TEACHERS MEETING The county Classroom Teachers Association will meet Tuesday, November 19, from 4:15 p.m. to 4:45 p.m. at Fremont School.

KU Traffic Control

(Continued from Page 1) obtained at the office when applicants have returned registration blanks signed by the parent or guardian, and when the student committee has reviewed the application.

West Coast

(Continued from Page 1) doing and consequently relayed erroneous information to passengers — is being corrected in two ways. IN THE FIRST PLACE, Croson said, an inquiring passenger now is given the actual departure time from the last station, however early or late the flight may be.

Man Injured In Accident

An accident on U.S. 97 north of Collier Park yesterday afternoon hospitalized one passenger and forced one car into the borrow pit.

Hazel Turner Dies In SF

BONANZA — Friends in Langell Valley learned this morning of the death of Mrs. Hazel Turner, 68, in San Francisco Tuesday night.

Stab Victim Said Better

A Chilcoquin man, Randall Alfred Crain, was expected to leave Klamath Valley Hospital today after treatment for a stabbing wound.

Cattlemen Name Aides

William Marshall, who with his brother, John Marshall, took the title of Oregon Cattleman of the Year as a joint award for 1959, was elected as a new second vice president of Oregon Cattleman's Association last week in Portland.

Pair Named In Beating

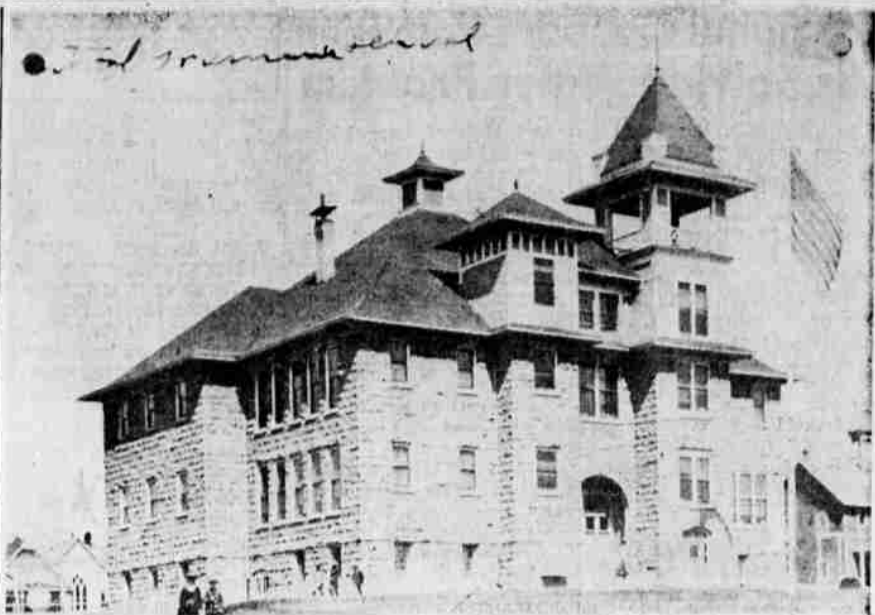
A charge of violence erupting from a strike at Crater Lake Machinery Company here was aired in district court today.

Defendants Ask Hearing

Two men accused of beating a companion with a poker and a wine bottle requested a preliminary hearing in district court today.

Stab Victim Said Better

A Chilcoquin man, Randall Alfred Crain, was expected to leave Klamath Valley Hospital today after treatment for a stabbing wound.



CENTRAL SCHOOL, whose ancestry dates to 1905, was the city's only elementary school before Riverside was built in 1910. The city elementary district has evolved to include eight elementary and one high school.

Articles In Old Paper Show Changes In Schools

By NORM CARDOZA A pair of articles written by Klamath County school officials for the special December, 1909, issue of the defunct Morning Express, indicates the remarkable evolution schools here have since undergone.

Meeting Slated For Wednesday

TULELAKE — Marvin Aslett, president of the Starch Company, Idaho Falls, with which Western Starch Company, Tulelake, is affiliated, will meet with interested growers and shippers Wednesday night, to decide the future fate of the Hatfield plant.

Public Notice!

GOVERNMENT SURPLUS HOMES... This is the last and final group of these homes to be offered for public sale.

Defendants Ask Hearing

Two men accused of beating a companion with a poker and a wine bottle requested a preliminary hearing in district court today.

Stab Victim Said Better

A Chilcoquin man, Randall Alfred Crain, was expected to leave Klamath Valley Hospital today after treatment for a stabbing wound.

State Native Death Told

Mrs. Rosa N. McCornack, 86, a native of Oregon and resident of Klamath County since 1887, died at 3 a.m. Wednesday, November 18. She had been a hospital patient for the last two months.

Meeting Slated For Wednesday

TULELAKE — Marvin Aslett, president of the Starch Company, Idaho Falls, with which Western Starch Company, Tulelake, is affiliated, will meet with interested growers and shippers Wednesday night, to decide the future fate of the Hatfield plant.

BELL'S HARDWARE Special Factory Purchase Garbage Can SALE. Includes an image of a garbage can and promotional text.