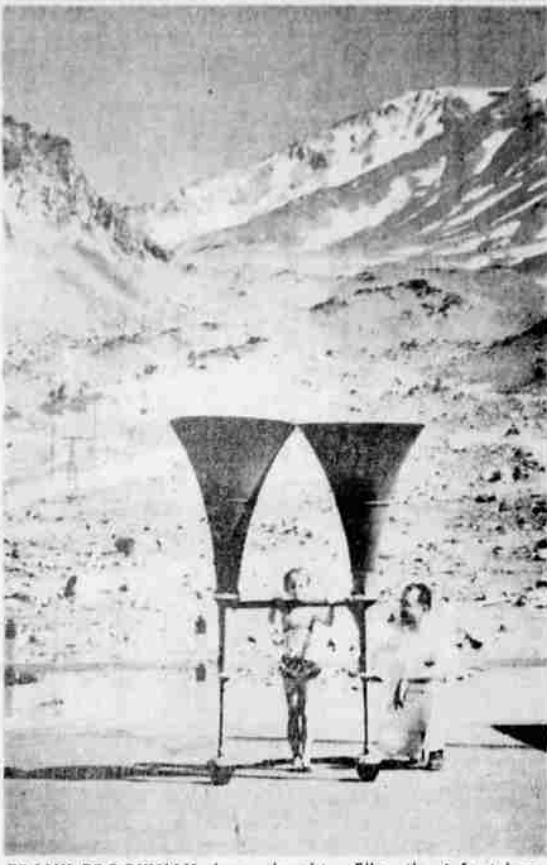


MARKETS and FINANCE

Stocks		Livestock	
WALL STREET		KLAMATH FALLS	
NEW YORK (AP) — Aircraft took some fairly sharp losses while oils remained slightly ahead in a slowly declining stock market late this afternoon.			
Volume for the day was estimated at 2,500,000 shares compared with 2,410,000 Monday.			
Losses of most key stocks were from fractions to about a point. A scattering of secondary issues made wider moves.			
North American Aviation dropped about 2. Losses of more than a point were taken by Douglas Aircraft and Martin Co. Lockheed, United Aircraft and General Dynamics were down about a point each.			
Brokers said that belated recognition of the possibility that the Eisenhower - Khrushchev visits may ease cold war tensions combined with unfavorable aspects of the aircraft business to bring in some selling.			
Polaroid scampered ahead more than 3. American Machine & Foundry gained more than a point. General Tire dropped more than 3.			
Pan American World Airways was active and down more than a point as were Radio Corp. and Philco.			
Texas Instruments fell about 2. Motors rose a bit after early indifference. Steels were narrowly mixed.			
NEW YORK STOCKS			
By THE ASSOCIATED PRESS			
Admiral Corporation	29 1/2		
A. J. Ind.	5		
Allied Chemical	128 1/2		
Allis Chalmers	35		
Alcoa	110		
American Airlines	29 1/2		
American Can	45 1/2		
American Cyanamide	64		
American Motors	45 1/2		
American Smelting	45 1/2		
American Tel. & Tel.	79 1/2		
American Tobacco	101		
American Viscose	82 1/2		
Anacosta Copper	34 1/2		
Armco Steel	79 1/2		
Atchafalaya Railroad	29 1/2		
Bendix Aviation	77		
Bethlehem Steel	57 1/2		
Boeing Airplane Co.	34 1/2		
Borden Co.	87		
Borg Warner	46 1/2		
Burroughs Corp.	34 1/2		
California Packing	29		
Canadian Pacific	29 1/2		
Caterpillar Tractor	109		
Colanese Corporation	33 1/2		
Chrysler Corporation	66 1/2		
Cities Service	37 1/2		
Consolidated Edison	64 1/2		
Continental Can	50 1/2		
Crown Zellerbach	54 1/2		
Curtiss Wright	34 1/2		
Douglas Aircraft	47 1/2		
Dow Chemical	87 1/2		
Du Pont de Nemours	27 1/2		
Eastman Kodak	96		
El Paso NG	33 1/2		
Emerson Radio	16 1/2		
Firestone Tire	141 1/2		
Ford Motor	79 1/2		
General Dynamics	33 1/2		
General Electric	80 1/2		
General Foods	98 1/2		
General Motors	57		
Georgia Pac Corp.	45 1/2		
Goodyear Tire	144 1/2		
Great Northern	53 1/2		
Great West. Sugar	27		
Idaho Power	46 1/2		
Illinois Cent.	47 1/2		
International Nickel	105 1/2		
International Paper	130		
International T. & T.	36 1/2		
Johns Manville	58		
Kaiser Aluminum	59 1/2		
Libby, McNeill & Libby	13		
Lockheed Aircraft	29 1/2		
Loew's Incorporated	31 1/2		
Montgomery Ward	49 1/2		
National Cash Reg.	60 1/2		
New York Central	28 1/2		
Northern Pacific	54 1/2		
Pacific Gas & Electric	64 1/2		
Pacific Tel. & Tel.	181 1/2		
Pan American Airways	27 1/2		
Penney (J.C.) Co.	111 1/2		
Pennsylvania R.R.	17 1/2		
Pepsi Cola Co.	32 1/2		
Philco Corp.	26 1/2		
Phillips Pet.	49 1/2		
Polaroid	146 1/2		
Puget Sound P. & L.	34 1/2		
Radio Corp. of Amer.	64 1/2		
Rayonier Incorp.	27 1/2		
Republic Steel	76 1/2		
Reynolds Metals	113 1/2		
Richfield Oil	86 1/2		
Safeway Stores Inc.	57 1/2		
St. Regis	53 1/2		
Scott Paper Co.	85 1/2		
Sears Roebuck & Co.	46 1/2		
Shell Oil Co.	83		
Sinclair Oil	61 1/2		
Socoyn Mobil Oil	46		
Southern Pacific	72 1/2		
Sperry Rand	25 1/2		
Standard Oil Calif.	53 1/2		
Standard Oil N.J.	54 1/2		
Sundbaker Packard	12 1/2		
Sunshine Mining	7 1/2		
Swift & Company	45 1/2		
Texasco	87 1/2		
Thompson Products	64 1/2		
Transamerica Corp.	31 1/2		
Twentieth Century Fox	38 1/2		
Union Oil Company	51		
Union Pacific	34		
United Air Lines	42 1/2		
United Aircraft	53		
United Corporation	8 1/2		
United States Plywood	49		
United States Smelting	31 1/2		
United States Steel	103 1/2		
Walgreen Stores	50 1/2		
Warner Pictures	47		
Western Auto Supply	38 1/2		
Western Union Tel.	41 1/2		
Westinghouse Air Brake	34 1/2		
Westinghouse Electric	94		
Woolworth Company	58		



FRANK BROCKWAY shows daughter Ellen the 6-foot long racoon horns he installed recently at Mount Shasta Ski Bowl. The horns are used to warn skiers on the mountain of approaching storms, to relay messages to the basin, and to direct lost persons to the lodge. Brockway continues to service the big horns for constant efficient operation. — Photo by McKinney

Timber Bids Top Values

YREKA—Sealed bids for 7,600,000 board feet of timber in the Evans Mountain Unit, Seiad District, Klamath National Forest, were opened August 3 by Auction Officer John H. Murray Jr.

John Wheeler, Yreka, was high bidder. Hi-Ridge Lumber Company of Seiad Valley also submitted a bid.

Prices and bid rates were Ponderosa pine, 1,000,000 board feet, \$7.40 per M, \$16.65 per M; Sugar pine, two million board feet, \$12.15 per M, \$19 per M; white fir, nominal value, \$1.45 per M, \$1.45 per M; Douglas fir, 4,040,000 board feet, \$13.50 per M, \$16.38 per M; and incense cedar, 300,000 board feet, \$1.40 per M, \$1.40 per M.

Total advertised value was \$37,204. Value of the high bid totaled \$122,443.40.

The Evans Mountain Unit was the fourth in a series of Klamath National Forest Sales which have been set aside for preferential bidding by small business. Set aside sales are made through joint agreement of the forest service and the Small Business Administration as provided in the Small Business Act of 1958.

Tehama Dam Being Talked

SACRAMENTO (UPI) — State federal contract negotiations were under way here today in an effort to speed early construction of the \$18,400,000 Black Butte Dam in Tehama County and the 10-million-dollar New Hogan Dam in Calaveras County.

Talks began Monday between the Department of Water Resources and the federal Bureau of Reclamation.

Officials said the negotiations were aimed at setting up contractual language for the state to assure payment of water conservation costs if the local agencies fail to buy project water in the future.

Unless the federal government receives firm guarantees for the purchase of project water, officials said, it is likely no funds will be set up in next year's federal budget for either project.

Offers Nikita Time

NEW YORK (UPI) — The National Broadcasting Co. is offering Soviet Premier Nikita S. Khrushchev "equal time" to answer Vice President Richard M. Nixon's Russian radio-TV speech, the network said Monday.

NBC said it suggested that Khrushchev record a speech using the equipment displayed by Radio Corp. of America at the U.S. Exhibit in Moscow—the same equipment before which Khrushchev and Nixon carried on a portion of their public debate on the exhibit's opening day.

Too Many Tarzans

LOS ANGELES (AP) — Two Tarzans are too many, says Los Lesser Productions.

The company filed a \$1,925,000 breach-of-contract suit Tuesday against Loew's Theaters, Inc. It said it had granted MSG, Loew's subsidiary, exclusive distribution rights to two Tarzan pictures starring Gordon Scott but that MSG plans to release a third, with another star, in violation of the agreement.

STORE-WIDE CLEARANCE
—AUGUST SPECIAL—
DRAPERY PANELS
Reg. 4.95 **AUGUST PRICE 2.88** pr.
LUCAS FURNITURE
195 E. Main PH. TU 4-3134

Field Service Holds Dinner

MONTAGUE—A potluck dinner meeting was held last week at the home of Mr. and Mrs. Roy Townley, Little Shasta. It was attended by chapter representatives and board members of the American Field Service, as well as several young people who had benefited from the program.

Highlight of the evening was a panel discussion by the students on the AFS program. The Townleys' 17-year-old daughter Julie is at present in Denmark for the summer under the program.

The dinner was the climax of a conference held earlier in the day at Yreka High School, which had been called by Mrs. T. H. Dickinson, Yreka, who is the district representative of the AFS. Representatives present were from Dunsuir, Etna, Yreka and Montague. Mrs. Dickinson discussed various phases of the AFS, as well as reading a letter from the chapter president briefing the district on plans for the coming year.

The panel discussion, which proved to be a case of "adults seen but not heard," was strictly between the young people, led by Wilma Parker, Yreka, who was the first girl student to be sent abroad on the program. Others who participated in the phase of "students abroad," were Ronald Dickinson, Yreka; Carol Petersen, Montague and Susan Thom, Dunsuir. Each told what they had gained by going abroad, and how it enlightened them in many phases of European living.

Others on the panel were the young people whose parents had hosted foreign students from across the seas, also under the AFS program. They told what they had gained by having a foreign student living in their home during the entire school semester. Those whose parents had been hosts, were Lee Gass, Dunsuir; Adrienne Favero and Jane Meamber, both of Yreka.

Seiad Bridge Bids Opened

REDDING—Bids were opened on August 3, 1959, in the Division of Highways District Office in Redding for the repair of the Klamath River Bridge at Seiad in Siskiyou County on State Sign Route 96.

Five bids were received with Bos Construction Company of Berkeley submitting the low bid of \$3,175.

The proposed work, as stated by H. S. Miles, district engineer, involves straightening and repairing portions of the steel trusses of the bridge which were damaged by logs and debris during the severe storms of the 1957-58 winter.

Traffic will be permitted to use the existing bridge while work is in progress. Miles said, however, a one-way traffic control will be necessary. The work is expected to be completed by the first of October.

Wagon Train Nears River

BOARDMAN, Ore. (AP) — The Oregon Centennial wagon train pushed westward again today to a campsite overlooking the Columbia River four miles east of Arlington.

Tuesday the wagon train lost its scout temporarily but he survived a make-believe trial and hanging to rejoin the 50ers.

The scout, Gail Carnine, Camas Valley, Ore., was rounded up by a posse for horse thievery after someone mysteriously tied a horse to one of the wagons. An elfy took his place at the hanging.

The wagon train, en route from Independence, Mo., to Independence, Ore., is heading for The Dalles where it will be transported down the Columbia River and a few miles up the Willamette River by ship.

Then, it will get back on dry land at Portland's outskirts for the final stage of the journey to Independence. The wagons will arrive there Aug. 14.

A spokesman for the wagon train said confirmation was received Tuesday that the 5th Volunteer Wyoming Cavalry will be flown to Independence to escort the wagons into town.

"Doctor in Buckskin Clad," a play about the life of Marcus Whitman, also will be featured at the festivities honoring the arrival of the wagons.

A 220-foot converted military landing ship will haul the 50ers down the Columbia — animals, pioneers, modern vehicles and all.

Weather Table

THE WEATHER ELSEWHERE	High	Low	P.
Albany, rain	83	59	29
Albuquerque, clear	94	67	
Anchorage, cloudy	54	50	03
Atlanta, clear	90	73	
Bismarck, clear	101	70	
Boston, cloudy	75	63	
Buffalo, cloudy	86	67	
Chicago, cloudy	79	70	
Cleveland, cloudy	78	69	
Denver, clear	88	58	02
Des Moines, rain	93	73	T
Helena, clear	89	52	
Honolulu, rain	86	75	T
Indianapolis, cloudy	86	66	02
Los Angeles, cloudy	82	62	
Louisville, cloudy	82	67	10
Memphis, clear	93	76	
Miami, clear	84	75	32
Milwaukee, cloudy	84	64	
Mpls.-St. Paul, cloudy	95	73	
New Orleans, clear	91	76	
New York, rain	73	63	120
Oklahoma City, clear	98	73	
Omaha, rain	89	71	07
Philadelphia, rain	77	65	25
Phoenix, cloudy	93	80	13
Pittsburgh, cloudy	76	69	136
Portland, Me., cloudy	73	58	
Portland, Ore., clear	75	54	
Rapid City, cloudy	97	65	
Richmond, cloudy	76	72	
St. Louis, cloudy	92	71	73
Salt Lake City, clear	91	61	
San Francisco, clear	93	74	
Tampa, clear	91	74	02
Washington, cloudy	78	73	02

KLAMATH COUNTY FAIRGROUNDS
2:15 P.M. • AFTERNOON AND NIGHT • 8:15 P.M.
TUES. & WED. ★ AUG. 11 & 12
Eleventh Annual Klamath Falls Shrine Club
SHRINE CIRCUS
PRODUCED BY **Polack Bros.** Surpassing New 1959 Edition
General Admission Seats... Adults \$1.50; Children (Under 12) 75¢
Reserved Seats... Adults and Children \$2.00 & \$2.50
SEAT SALE AT KLAMATH AUDITORIUM, MAIN & SPRING
Formerly Old Klamath Armory. Open Daily 9:00 a.m. to 5:00 p.m.
A SPARKLING JEWEL AMONG CIRCUSES OF THE WORLD

SISKIYOU Sketchbook



ROBERT BIRD... Dunsuir barber

Queen Elizabeth Sails Thursday

SOUTHAMPTON, England (AP) — The big liner Queen Elizabeth will sail on schedule Thursday despite her collision off New York with an American freighter. The liner arrived Tuesday night still showing the scars of her mishap in the fog, which delayed her sailing from New York last week. The big ship was damaged slightly.

College Youths Poor Sailors, Raft Too Large

LOS ANGELES (AP) — Six college boys are in about the same pickle as the boat - builder who couldn't get his craft out of his basement.

They built a 12 by 20 - foot raft in a backyard for a 1,000 - mile voyage down the Mississippi River. On the eve of departure for Hannibal, Mo., starting point of their "Operation Huck Finn," they discovered they couldn't get the raft out of the yard. And then their car broke down.

But the Loyola University students still intend to make the journey—just how they haven't figured out. They plan to spend about three weeks drifting with the Mississippi current as did Mark Twain's fictional young adventurer.

The modern Huck Finns are Corrin McGrath, Stan Zalesny, Tony Kramer, Dennis Frawley, Alan Kumamoto, and Carlos Salazar.

MISSIONARY BAPTISMS

OSSINING, N. Y. (AP) — The headquarters for the Maryknoll Fathers reports that the order's far-flung missionary work in 10 countries resulted in 82,585 Roman Catholic baptisms in the past year.

Stop Sun Glare & Fade! Reduce Heat Economically

Plastic Glass TINT
can be applied to your present windows at a fraction of the cost of tinted glass!
★ Experienced Applicators
★ All Work Guaranteed
★ Free Estimates
KC PLASTIC GLASS TINT CO.
A Division of K C Painting Co.
520 Klamath Ave. Ph. TU 4-3829

Small Blazes Plague Area

MONTAGUE — Small fires with big potential continue to plague the forest service and volunteer fire-fighting groups in the Montague-Yreka area in Siskiyou County.

The Montague Volunteer Fire Department responded to an alarm at 3:45 Monday from the Gus Goertz ranch about six miles north of Montague. Since the fire was outside the city limits, the forest service unit was also called.

A tractor with a faulty muffler, being used to bale stubble, set fire to a dry grain field, burning about 1/2 acre before flames were extinguished.

Forest service officials credited the quick action of the Montague Fire Department with controlling the blaze and expressed gratitude to the volunteer groups who are aiding the forest department so effectively during one of the worst fire seasons in a long time.

A. Roy Bengard, state forestry division ranger, warned there is a California law to the effect that any combustion engine being operated on grass, brush, grain or timberlands during fire season must be equipped with a spark arrester.

One machine operator has been cited for infraction of the law this season and Bengard states others may be cited.

A storage shed on 12th Street in Montague suddenly burst into flame at 8:20 Monday night, being caused to have been caused by spontaneous combustion. The blaze was controlled by the volunteer fire group before it could ignite surrounding buildings.

A third fire completely destroyed an abandoned house on the old Burton ranch on Highway 99, six miles south of Yreka. Forest service firefighters from Yreka and Weed kept the fire from reaching a hay storage barn in a field of dry grass.

Montague residents are reminded that the new Montague Fire Department telephone number is Globe 9-3434.

College Youths Poor Sailors, Raft Too Large

LOS ANGELES (AP) — Six college boys are in about the same pickle as the boat - builder who couldn't get his craft out of his basement.

They built a 12 by 20 - foot raft in a backyard for a 1,000 - mile voyage down the Mississippi River. On the eve of departure for Hannibal, Mo., starting point of their "Operation Huck Finn," they discovered they couldn't get the raft out of the yard. And then their car broke down.

But the Loyola University students still intend to make the journey—just how they haven't figured out. They plan to spend about three weeks drifting with the Mississippi current as did Mark Twain's fictional young adventurer.

The modern Huck Finns are Corrin McGrath, Stan Zalesny, Tony Kramer, Dennis Frawley, Alan Kumamoto, and Carlos Salazar.

Rattlers Reported

MOUNT SHASTA—Reports from the Box Canyon area are that rattlesnakes are becoming a menace in that area.

Persons who go along the river are warned to be extremely watchful. It is believed that dry weather has depleted water supplies and driven small rodents out of their normal habitats in search of new water sources. Where the rodents go, the snakes are congregating for their food and water.